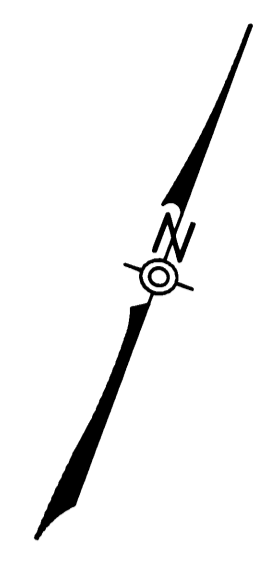
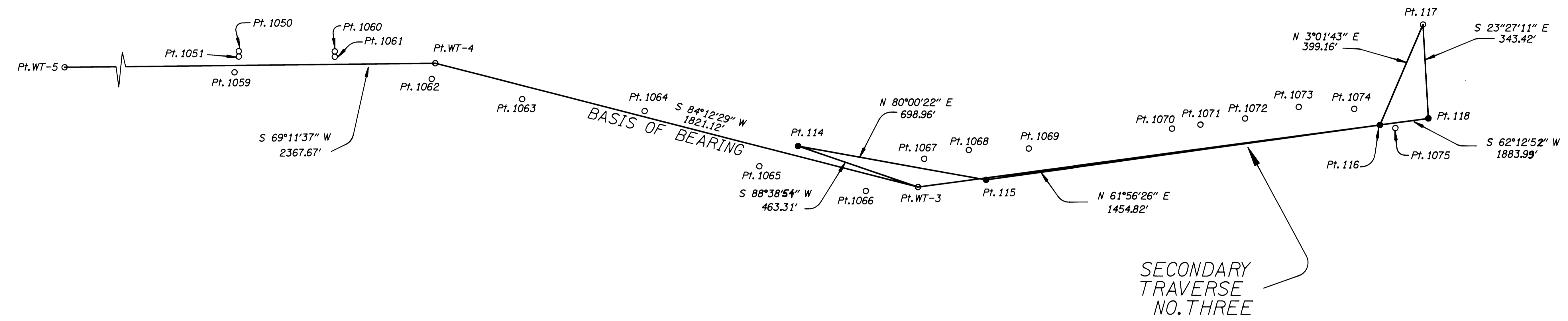


COUNTY SURVEYORS FILE DATA
DO NOT REMOVE FROM OFFICE

FILED
Date: 7-19-95 By: AP
This survey consists of:
Map: M 119-63-D
Narrative: C.S. 63/164-1
Corner Rpt: _____
DOUGLAS COUNTY
SURVEYOR



SCALE 1" = 200'



SURVEY NARRATIVE

Secondary Traverse No.FOUR used Photogrammetry's points "WT-3" and "WT-4" as a Basis of Bearing. The traverse's closure after adjustment was 1:204,500.

NOTE: SEE SHEET FIVE FOR COORDINATES OF FOUND PROPERTY CORNER POINTS 1050, 1051, AND 1059 TO 1075.

LEGEND

- Monument Set
- Monument Found

PHOTGRAMMETRY CONTROL POINTS				
POINTS	DESCRIPTION	NORTHING	EASTING	ELEVATION
WT-3	Fd. 1 1/2" Alum. Cap Stamped "OREGON STATE HWY. DIV. WT3 1991" Flush W/Surface	539672.99	4134351.07	553.47
WT-4	Fd. 1 1/2" Alum. Cap Stamped "OREGON STATE HWY. DIV. WT4 1991" 0.1' Below Surface	539489.21	4132539.25	574.73

SECONDARY TRAVERSE NO. FOUR				
POINTS	DESCRIPTION	NORTHING	EASTING	ELEVATION
114	Set 1/2" Sq. Iron Rod W/ 1/2" Alum. Cap Stamped "ODOT Horiz. Control 114"	539662.06	4133887.89	557.53
115	Set R/R Spike W/Punch Mark, Stamped "115"	539783.36	4134576.24	
116	Set R/R Spike W/Punch Mark And Stamped "116"	540467.69	4135860.06	
117	Fd. 2 1/2" Brass Cap Stamped "DOUGLAS COUNTY SURVEYORS Section Corner of Sections 19, 20, 29, 30, T. 28 S., R. 6 W., W.M. 1986", 0.3' Above Surface In Good Condition	540866.29	4135881.15	
118	Set R/R Spike W/Punch Mark And Stamped "118"	540551.24	4136017.83	

NOTE: COORDINATES USED ON THIS MAP ARE ON A LOCAL DATUM PLANE WHICH REPRESENTS TRUE GROUND DISTANCES. TO CONVERT L.D.P. COORDINATES TO OREGON STATE GRID, NAD 83, SOUTH ZONE MULTIPLY L.D.P. COORDINATES BY 0.99986527.

REGISTERED PROFESSIONAL LAND SURVEYOR
Robert G. Paul
ROBERT G. PAUL
2253
Exp 12/96

ROBERT G. PAUL
OREGON DEPT. OF TRANSPORTATION
3500 NW STEWART PARKWAY
ROSEBURG, OREGON 97470