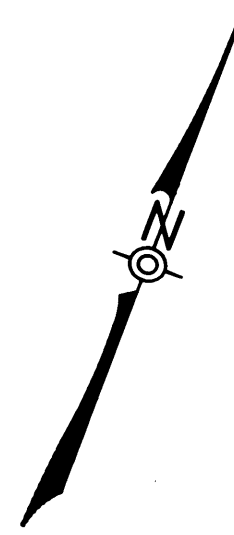


JOHN FREEMAN  
D.L.C.  
NO. 49



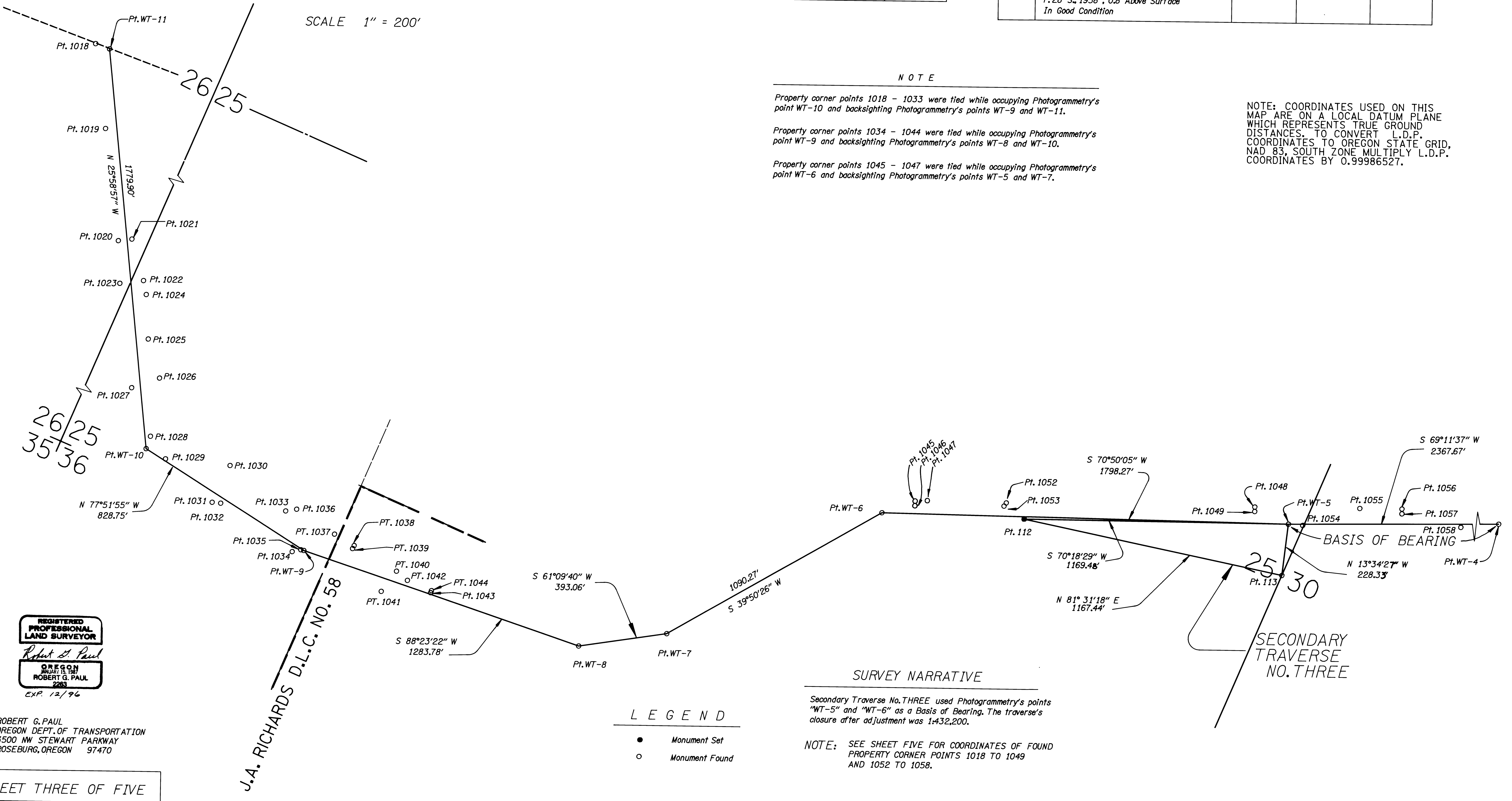
SCALE 1" = 200'

PHOTGRAMMETRY CONTROL POINTS				
POINTS	DESCRIPTION	NORTHING	EASTING	ELEVATION
WT-5	Fd. 1/2" Iron Rod w/ 1 1/2" Alum. Cap Stamped "OREGON STATE HWY. DIV. WT-5 1991", Flush w/ Surface In Good Condition	538648.19	4130325.98	622.40
WT-6	Fd. 1/2" Iron Rod w/ 1 1/2" Alum. Cap Stamped "OREGON STATE HWY. DIV. WT-6 1991", Flush w/ Surface In Good Condition	538057.83	4128627.38	650.48

SECONDARY TRAVERSE NO. THREE				
POINTS	DESCRIPTION	NORTHING	EASTING	ELEVATION
112	Set 1/2" Sq. Iron Rod w/ 1 1/2" Alum. Cap Stamped " ODOT Horiz. Control 112"	538254.12	4129224.89	639.03
113	Fd. 2 1/2" Brass Cap On A 1 1/4" O.D. Iron Pipe Stamped "COUNTY SURVEYORS OFFICE. 1/4 Corner Sec. 25, R. 7 W., and Sec. 30, R. 6 W., T. 28 S., 1958", 0.8' Above Surface In Good Condition	538426.24	4130379.57	

FILED  
Date 7-19-95 By JP  
This survey consists of:  
Map: M 119-63C  
Narrative: D.S. 63/164-1  
Corner Plat:  
DOUGLAS COUNTY SURVEYOR

COUNTY SURVEYORS FILE DATA  
DO NOT REMOVE FROM OFFICE



**NOTE**  
Property corner points 1018 - 1033 were tied while occupying Photogrammetry's point WT-10 and backsighting Photogrammetry's points WT-9 and WT-11.  
Property corner points 1034 - 1044 were tied while occupying Photogrammetry's point WT-9 and backsighting Photogrammetry's points WT-8 and WT-10.  
Property corner points 1045 - 1047 were tied while occupying Photogrammetry's point WT-6 and backsighting Photogrammetry's points WT-5 and WT-7.

NOTE: COORDINATES USED ON THIS MAP ARE ON A LOCAL DATUM PLANE WHICH REPRESENTS TRUE GROUND DISTANCES. TO CONVERT L.D.P. COORDINATES TO OREGON STATE GRID, NAD 83, SOUTH ZONE MULTIPLY L.D.P. COORDINATES BY 0.99986527.

**LEGEND**

- Monument Set
- Monument Found

**SURVEY NARRATIVE**  
Secondary Traverse No. THREE used Photogrammetry's points "WT-5" and "WT-6" as a Basis of Bearing. The traverse's closure after adjustment was 1:432,200.  
**NOTE:** SEE SHEET FIVE FOR COORDINATES OF FOUND PROPERTY CORNER POINTS 1018 TO 1049 AND 1052 TO 1058.

REGISTERED PROFESSIONAL LAND SURVEYOR  
*Robert G. Paul*  
OREGON  
ROBERT G. PAUL  
2263  
EXP. 12/96

ROBERT G. PAUL  
OREGON DEPT. OF TRANSPORTATION  
3500 NW STEWART PARKWAY  
ROSEBURG, OREGON 97470

J.A. RICHARDS D.L.C. NO. 58