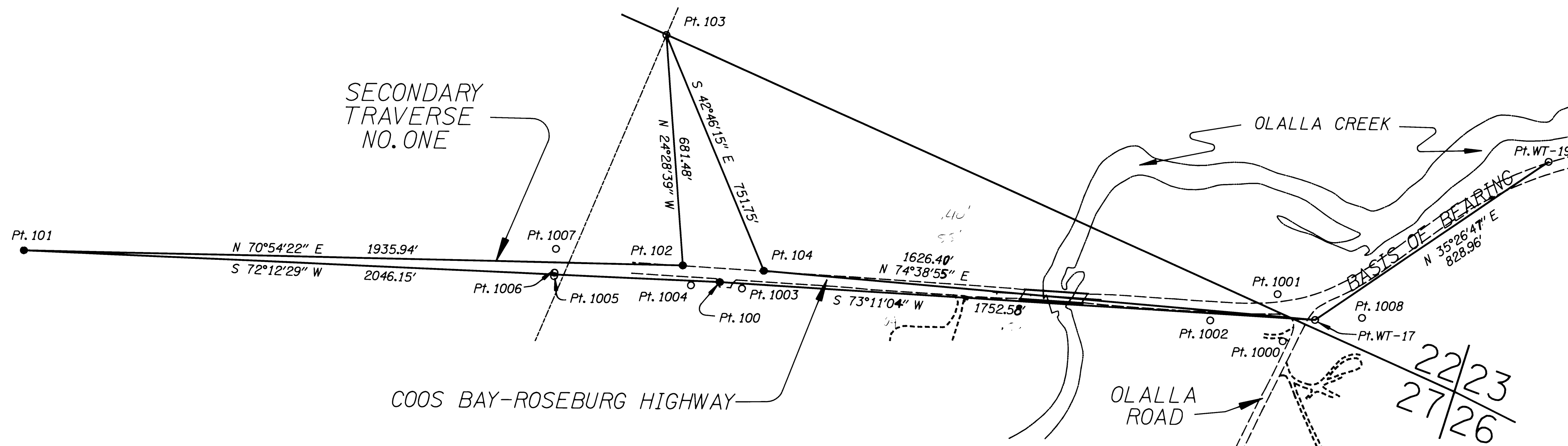


FILED
Date: 7-19-95 By: AP
This survey consists of:
Map: M 119-63 R
Narrative: C.S. 63/164-1
Corner Rpt:
DOUGLAS COUNTY SURVEYOR



SCALE 1" = 200'

NOTE: COORDINATES USED ON THIS MAP ARE ON A LOCAL DATUM PLANE WHICH REPRESENTS TRUE GROUND DISTANCES. TO CONVERT L.D.P. COORDINATES TO OREGON STATE GRID, NAD 83, SOUTH ZONE MULTIPLY L.D.P. COORDINATES BY 0.99986527.

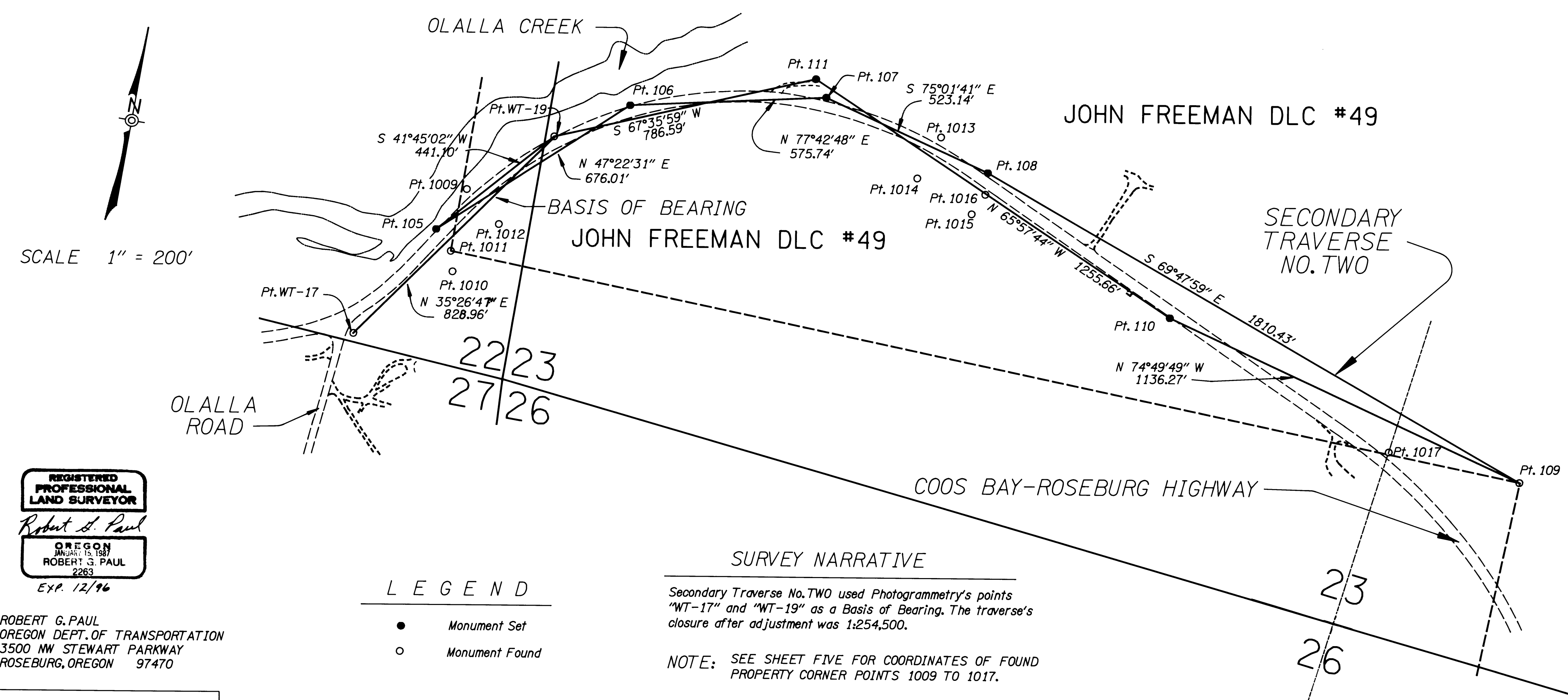
SURVEY NARRATIVE

Secondary Traverse No. ONE used Photogrammetry's points "WT-17" and "WT-19" as a Basis of Bearing. The traverse's closure after adjustment was 1:350,300.

NOTE: SEE SHEET FIVE FOR COORDINATES OF FOUND PROPERTY CORNER POINTS 1000 TO 1008.

PHOTGRAMMETRY CONTROL POINTS				
POINTS	DESCRIPTION	NORTHING	EASTING	ELEVATION
WT-17	Fd. 5/8" Iron Rod W/1 1/2" Alum. Cap Stamped "OREGON STATE HWY. DIV. W.T. 17 1991", 0.1' Above Surface in Good Cond.	541912.23	4119655.49	628.57
WT-19	Fd. 5/8" Iron Rod W/1 1/2" Alum. Cap Stamped "OREGON STATE HWY. DIV. W.T. 19 1991", 0.1' Below Surface in Good Cond.	542587.55	4120136.24	625.44

SECONDARY TRAVERSE NO. ONE				
POINTS	DESCRIPTION	NORTHING	EASTING	ELEVATION
100	Set 1/2" Sq. Iron Rod W/1 1/2" Alum. Cap Stamped "ODOT Horiz. Control 100"	541405.22	4117977.85	627.21
101	Set 1/2" Sq. Iron Rod W/1 1/2" Alum. Cap Stamped "ODOT Horiz. Control 101"	540779.99	4116029.56	
102	Set 5/8" Iron Rod W/1 1/2" Alum. Cap Stamped "ODOT Horiz. Control 102"	541413.27	4117858.99	627.72
103	Fd. 1 1/2" Iron Pipe W/2 1/2" Brass Cap Stamped "DOUGLAS COUNTY SURVEYORS OFFICE 1/4 Corner Sections 22 and 27, T. 28 S., R. 7 W., W.M.", Flush w/Surface in Good Condition	542033.50	4117576.63	
104	Set 1/2" Sq. Iron Rod W/1 1/2" Alum. Cap Stamped "ODOT Horiz. Control 104"	541481.66	4118087.12	627.60



SCALE 1" = 200'

PHOTGRAMMETRY CONTROL POINTS				
POINTS	DESCRIPTION	NORTHING	EASTING	ELEVATION
WT-17	Fd. 5/8" Iron Rod W/1 1/2" Alum. Cap Stamped "OREGON STATE HWY. DIV. W.T. 17 1991", 0.1' Above Surface in Good Cond.	541912.23	4119655.49	628.57
WT-19	Fd. 5/8" Iron Rod W/1 1/2" Alum. Cap Stamped "OREGON STATE HWY. DIV. W.T. 19 1991", 0.1' Below Surface in Good Cond.	542587.55	4120136.24	625.44

SECONDARY TRAVERSE NO. TWO				
POINTS	DESCRIPTION	NORTHING	EASTING	ELEVATION
105	Set 1/2" Sq. Iron Rod W/1 1/2" Alum. Cap Stamped "ODOT Horiz. Control 105"	542258.47	4119842.52	623.71
106	Set 1/2" Sq. Iron Rod W/1 1/2" Alum. Cap Stamped "ODOT Horiz. Control 106"	542716.26	4120339.93	625.11
107	Set 1/2" Sq. Iron Rod W/1 1/2" Alum. Cap Stamped "ODOT Horiz. Control 107"	542838.78	4120902.48	625.14
108	Set 1/2" Sq. Iron Rod W/1 1/2" Alum. Cap Stamped "ODOT Horiz. Control 108"	542703.63	4121407.86	618.37
109	Fd. 2 1/2" Brass Cap on 1 1/4" Galvan. Pipe Stamped "COUNTY SURVEYORS OFFICE INTL. D.L.C. 49 1970" 0.6' Above Ground In Good Condition	542078.48	4123106.93	
110	Set 1/2" Sq. Iron Rod W/1 1/2" Alum. Cap Stamped "ODOT Horiz. Control 110"	542375.82	4122010.25	623.35
111	Set 1/2" Sq. Iron Rod W/1 1/2" Alum. Cap Stamped "ODOT Horiz. Control 111"	542887.30	4120863.48	624.14

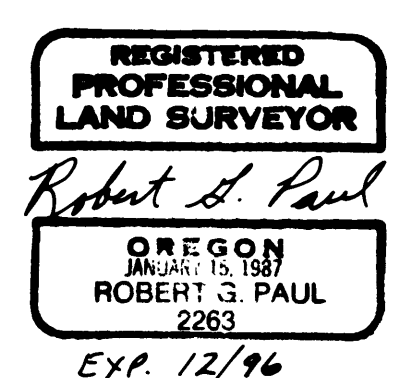
SURVEY NARRATIVE

Secondary Traverse No. TWO used Photogrammetry's points "WT-17" and "WT-19" as a Basis of Bearing. The traverse's closure after adjustment was 1:254,500.

NOTE: SEE SHEET FIVE FOR COORDINATES OF FOUND PROPERTY CORNER POINTS 1009 TO 1017.

LEGEND

- Monument Set
- Monument Found



ROBERT G. PAUL
OREGON DEPT. OF TRANSPORTATION
3500 NW STEWART PARKWAY
ROSEBURG, OREGON 97470