

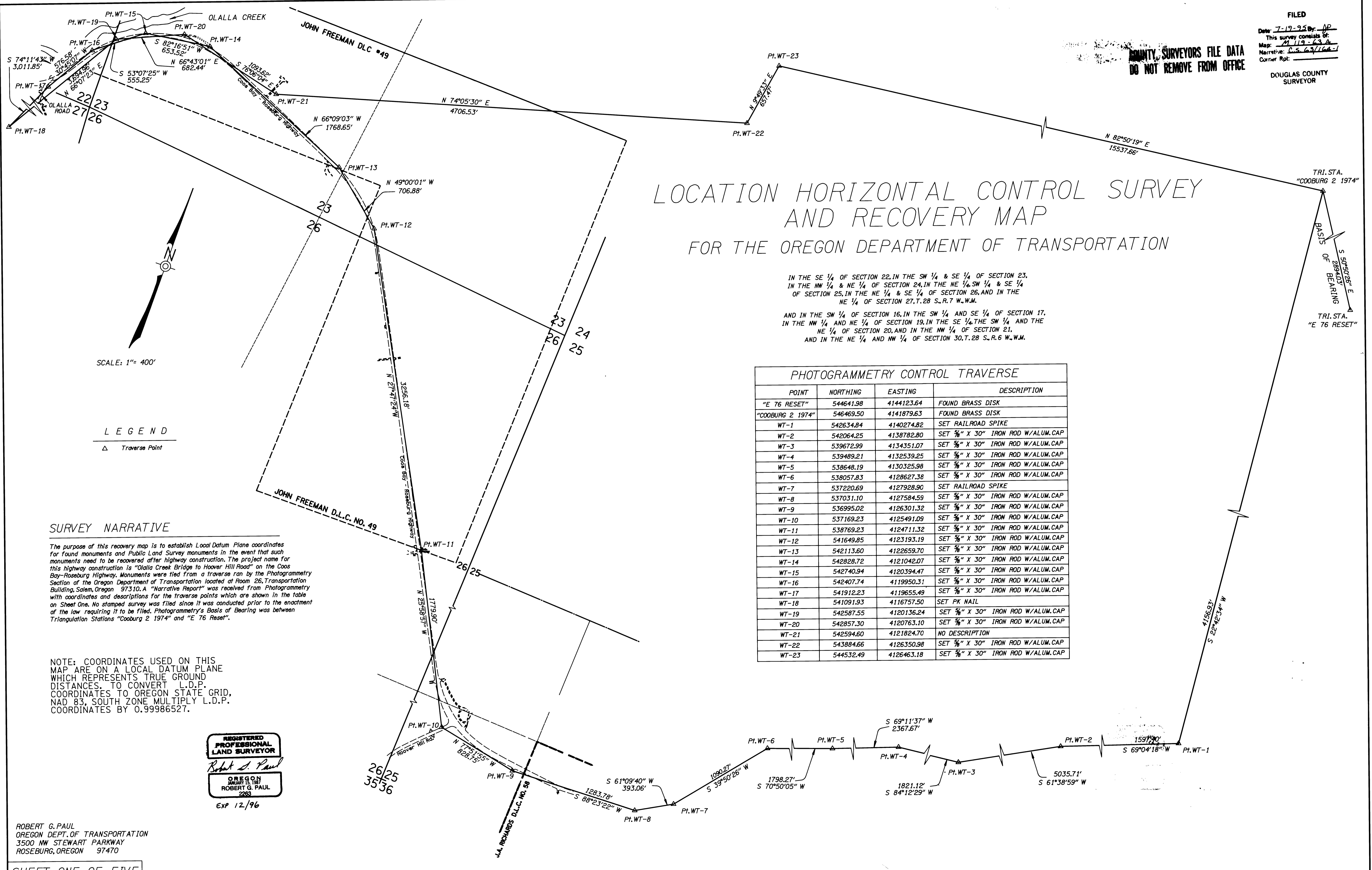
1-37-63
1-37-63

FILED

Date: 7-19-95 by: AP
This survey consists of:
Map: M 119-63 A
Narrative: C.S. 63/164-1
Corner Rpt: _____

COUNTY SURVEYORS FILE DATA
DO NOT REMOVE FROM OFFICE

DOUGLAS COUNTY
SURVEYOR



LOCATION HORIZONTAL CONTROL SURVEY AND RECOVERY MAP FOR THE OREGON DEPARTMENT OF TRANSPORTATION

IN THE SE 1/4 OF SECTION 22, IN THE SW 1/4 & SE 1/4 OF SECTION 23,
IN THE NW 1/4 & NE 1/4 OF SECTION 24, IN THE NE 1/4, SW 1/4 & SE 1/4
OF SECTION 25, IN THE NE 1/4 & SE 1/4 OF SECTION 26, AND IN THE
NE 1/4 OF SECTION 27, T. 28 S., R. 7 W., W.M.

AND IN THE SW 1/4 OF SECTION 16, IN THE SW 1/4 AND SE 1/4 OF SECTION 17,
IN THE NW 1/4 AND NE 1/4 OF SECTION 19, IN THE SE 1/4, THE SW 1/4 AND THE
NE 1/4 OF SECTION 20, AND IN THE NW 1/4 OF SECTION 21,
AND IN THE NE 1/4 AND NW 1/4 OF SECTION 30, T. 28 S., R. 6 W., W.M.

POINT	NORTHING	EASTING	DESCRIPTION
"E 76 RESET"	544641.98	4144123.64	FOUND BRASS DISK
"COOBURG 2 1974"	546469.50	4141879.63	FOUND BRASS DISK
WT-1	542634.84	4140274.82	SET RAILROAD SPIKE
WT-2	542064.25	4138782.80	SET 5/8" X 30" IRON ROD W/ALUM. CAP
WT-3	539672.99	4134351.07	SET 5/8" X 30" IRON ROD W/ALUM. CAP
WT-4	539489.21	4132539.25	SET 5/8" X 30" IRON ROD W/ALUM. CAP
WT-5	538648.19	4130325.98	SET 5/8" X 30" IRON ROD W/ALUM. CAP
WT-6	538057.83	4128627.38	SET 5/8" X 30" IRON ROD W/ALUM. CAP
WT-7	537220.69	4127928.90	SET RAILROAD SPIKE
WT-8	537031.10	4127584.59	SET 5/8" X 30" IRON ROD W/ALUM. CAP
WT-9	536995.02	4126301.32	SET 5/8" X 30" IRON ROD W/ALUM. CAP
WT-10	537169.23	4125491.09	SET 5/8" X 30" IRON ROD W/ALUM. CAP
WT-11	538769.23	4124711.32	SET 5/8" X 30" IRON ROD W/ALUM. CAP
WT-12	541649.85	4123193.19	SET 5/8" X 30" IRON ROD W/ALUM. CAP
WT-13	542113.60	4122659.70	SET 5/8" X 30" IRON ROD W/ALUM. CAP
WT-14	542828.72	4121042.07	SET 5/8" X 30" IRON ROD W/ALUM. CAP
WT-15	542740.94	4120394.47	SET 5/8" X 30" IRON ROD W/ALUM. CAP
WT-16	542407.74	4119950.31	SET 5/8" X 30" IRON ROD W/ALUM. CAP
WT-17	541912.23	4119655.49	SET 5/8" X 30" IRON ROD W/ALUM. CAP
WT-18	541091.93	4116757.50	SET PK NAIL
WT-19	542587.55	4120136.24	SET 5/8" X 30" IRON ROD W/ALUM. CAP
WT-20	542857.30	4120763.10	SET 5/8" X 30" IRON ROD W/ALUM. CAP
WT-21	542594.60	4121824.70	NO DESCRIPTION
WT-22	543884.66	4126350.98	SET 5/8" X 30" IRON ROD W/ALUM. CAP
WT-23	544532.49	4126463.18	SET 5/8" X 30" IRON ROD W/ALUM. CAP

SURVEY NARRATIVE

The purpose of this recovery map is to establish Local Datum Plane coordinates for found monuments and Public Land Survey monuments in the event that such monuments need to be recovered after highway construction. The project name for this highway construction is "Olalla Creek Bridge to Hoover Hill Road" on the Coos Bay-Roseburg Highway. Monuments were tied from a traverse run by the Photogrammetry Section of the Oregon Department of Transportation located at Room 26, Transportation Building, Salem, Oregon 97310. A "Narrative Report" was received from Photogrammetry with coordinates and descriptions for the traverse points which are shown in the table on Sheet One. No stamped survey was filed since it was conducted prior to the enactment of the law requiring it to be filed. Photogrammetry's Basis of Bearing was between Triangulation Stations "Cooburg 2 1974" and "E 76 Reset".

NOTE: COORDINATES USED ON THIS MAP ARE ON A LOCAL DATUM PLANE WHICH REPRESENTS TRUE GROUND DISTANCES. TO CONVERT L.D.P. COORDINATES TO OREGON STATE GRID, NAD 83, SOUTH ZONE MULTIPLY L.D.P. COORDINATES BY 0.99986527.

REGISTERED PROFESSIONAL LAND SURVEYOR
Robert G. Paul
OREGON JANUARY 15, 1987
ROBERT G. PAUL
2283
EXP 12/96

ROBERT G. PAUL
OREGON DEPT. OF TRANSPORTATION
3500 NW STEWART PARKWAY
ROSEBURG, OREGON 97470