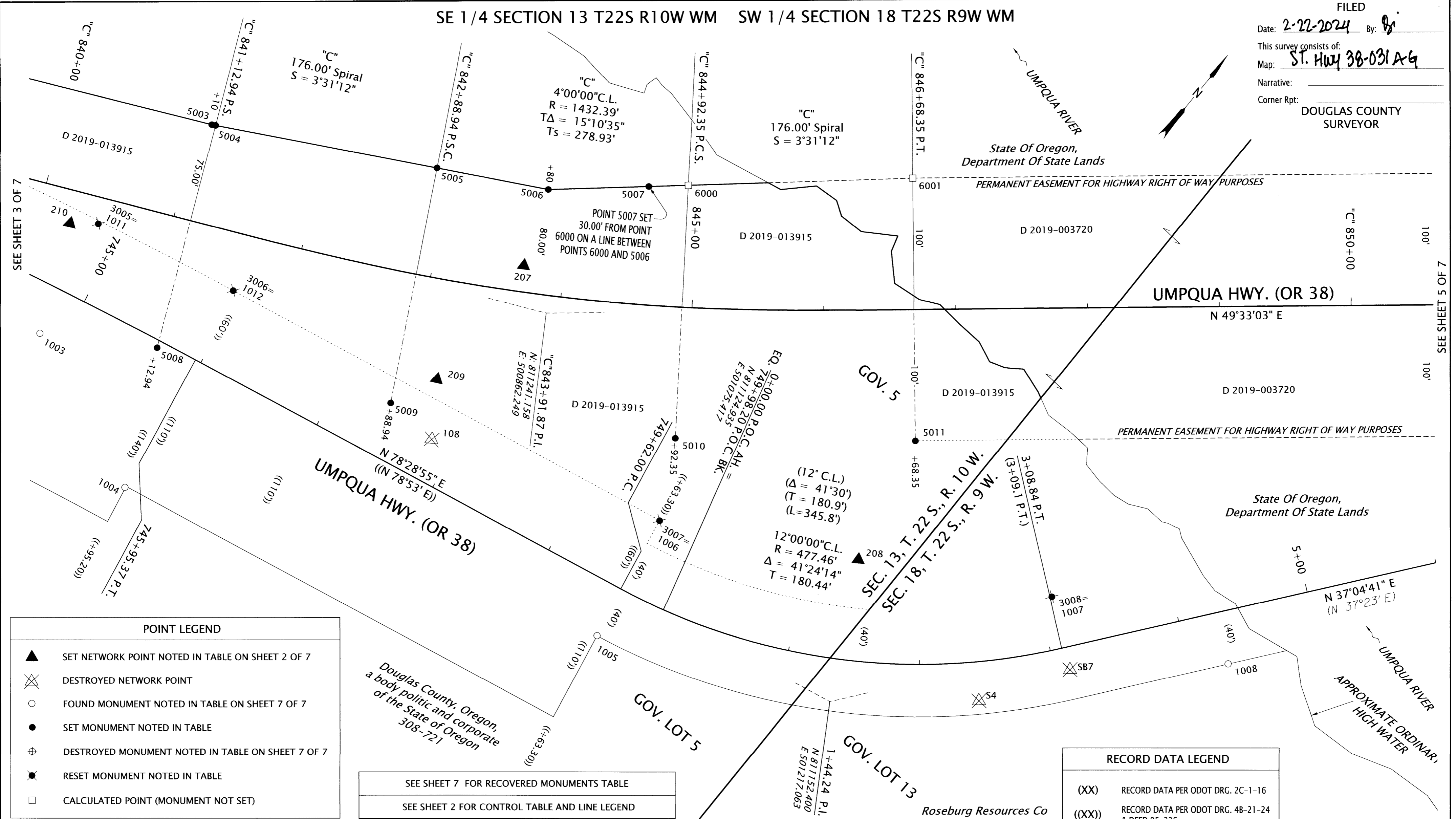


SE 1/4 SECTION 13 T22S R10W WM SW 1/4 SECTION 18 T22S R9W WM

FILED

Date: 2-22-2024 By: *AD*  
 This survey consists of:  
 Map: ST. HWY 38-031 A-G  
 Narrative:  
 Corner Rpt: DOUGLAS COUNTY SURVEYOR



**POINT LEGEND**

- ▲ SET NETWORK POINT NOTED IN TABLE ON SHEET 2 OF 7
- ⊗ DESTROYED NETWORK POINT
- FOUND MONUMENT NOTED IN TABLE ON SHEET 7 OF 7
- SET MONUMENT NOTED IN TABLE
- ⊕ DESTROYED MONUMENT NOTED IN TABLE ON SHEET 7 OF 7
- ⊗ RESET MONUMENT NOTED IN TABLE
- CALCULATED POINT (MONUMENT NOT SET)

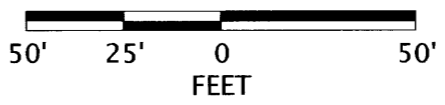
SEE SHEET 7 FOR RECOVERED MONUMENTS TABLE  
 SEE SHEET 2 FOR CONTROL TABLE AND LINE LEGEND

**RECORD DATA LEGEND**

- (XX) RECORD DATA PER ODOT DRG. 2C-1-16
- ((XX)) RECORD DATA PER ODOT DRG. 4B-21-24 & DEED 95-236
- [XX] RECORD DATA PER ODOT DRG. 2B-24-20

SET MONUMENT TABLE

PT. NO.	STATION	OFFSET	OCRS NORTHING	OCRS EASTING	DATE	DESCRIPTION	RP = REFERENCE POINT
3005	744+82.84	-57.79	811075.33	500557.89	12/11/2023	SET 5/8" X 30" REBAR w/ 2" ALUMINUM CAP STAMPED "ODOT RESET" (RESET OF POINT 1011)	
3006	745+95.38	-60.00	811101.96	500669.03	12/11/2023	SET 5/8" X 30" REBAR w/ 2" ALUMINUM CAP STAMPED "ODOT RESET" (RESET OF POINT 1012)	
3007	749+63.45	-59.85	811175.27	501029.55	12/14/2023	SET 5/8" X 30" REBAR w/ 2" ALUMINUM CAP STAMPED "ODOT RESET" (RESET OF POINT 1006)	
3008	3+10.29	-39.92	811321.58	501294.88	12/14/2023	SET 5/8" X 30" REBAR w/ 2" ALUMINUM CAP STAMPED "ODOT RESET" (RESET OF POINT 1007)	
5003	"C" 841+10.00	-75.00	811188.64	500575.34	12/12/2023	SET 5/8" X 30" REBAR w/ 2" ALUMINUM CAP STAMPED "ODOT RIGHT OF WAY"	
5004	"C" 841+12.94	-75.19	811190.06	500577.92	12/11/2023	SET 5/8" X 30" REBAR w/ 2" ALUMINUM CAP STAMPED "ODOT RIGHT OF WAY"	
5005	"C" 842+88.94	-82.57	811272.81	500727.80	12/11/2023	SET 5/8" X 30" REBAR w/ 2" ALUMINUM CAP STAMPED "ODOT RIGHT OF WAY"	
5006	"C" 843+80.00	-80.00	811314.33	500803.02	12/11/2023	SET 5/8" X 30" REBAR w/ 2" ALUMINUM CAP STAMPED "ODOT RIGHT OF WAY"	
5007	"C" 844+60.44	-90.13	811365.08	500860.04	12/14/2023	SET 5/8" X 30" REBAR w/ 2" ALUMINUM CAP STAMPED "ODOT RIGHT OF WAY"	
5008	"C" 841+12.94	100.00	811031.65	500652.71	12/11/2023	SET 5/8" X 30" REBAR w/ 2" ALUMINUM CAP STAMPED "ODOT RIGHT OF WAY RP"	
5009	"C" 842+88.94	100.00	811112.81	500815.74	12/14/2023	SET 5/8" X 30" REBAR w/ 2" ALUMINUM CAP STAMPED "ODOT RP"	
5010	"C" 844+92.35	100.00	811230.78	500998.37	12/14/2023	SET 5/8" X 30" REBAR w/ 2" ALUMINUM CAP STAMPED "ODOT RP"	
5011	"C" 846+68.35	100.00	811346.02	501139.39	12/14/2023	SET 5/8" X 30" REBAR w/ 2" ALUMINUM CAP STAMPED "ODOT RP"	
6000	"C" 844+92.35	-92.95	811385.02	500882.45	-	CALCULATED RIGHT OF WAY POINT, NO MONUMENT SET	
6001	"C" 846+68.35	-100.00	811498.22	501009.63	-	CALCULATED RIGHT OF WAY POINT, NO MONUMENT SET	



REGISTERED PROFESSIONAL LAND SURVEYOR  
*Andrew David Ausland*  
 OREGON  
 JULY 15, 2003  
 ANDREW DAVID AUSLAND  
 56136  
 EXPIRES: 12/31/2025

**OREGON DEPARTMENT OF TRANSPORTATION**  
 RIGHT-OF-WAY BOUNDARY MONUMENTATION MAP  
 OR38: UMPQUA RIVER (SCOTTSBURG) BRIDGE REPLACEMENT  
 UMPQUA HIGHWAY (MP 15.9 - MP 17.1)  
 DOUGLAS COUNTY

ODOT REGION 3 TECH CENTER  
 100 ANTELOPE ROAD  
 WHITE CITY, OREGON 97503

FEBRUARY 14, 2024  
 SCALE: 1" = 50'  
 SHEET 4 OF 7

KEY NO. 18578