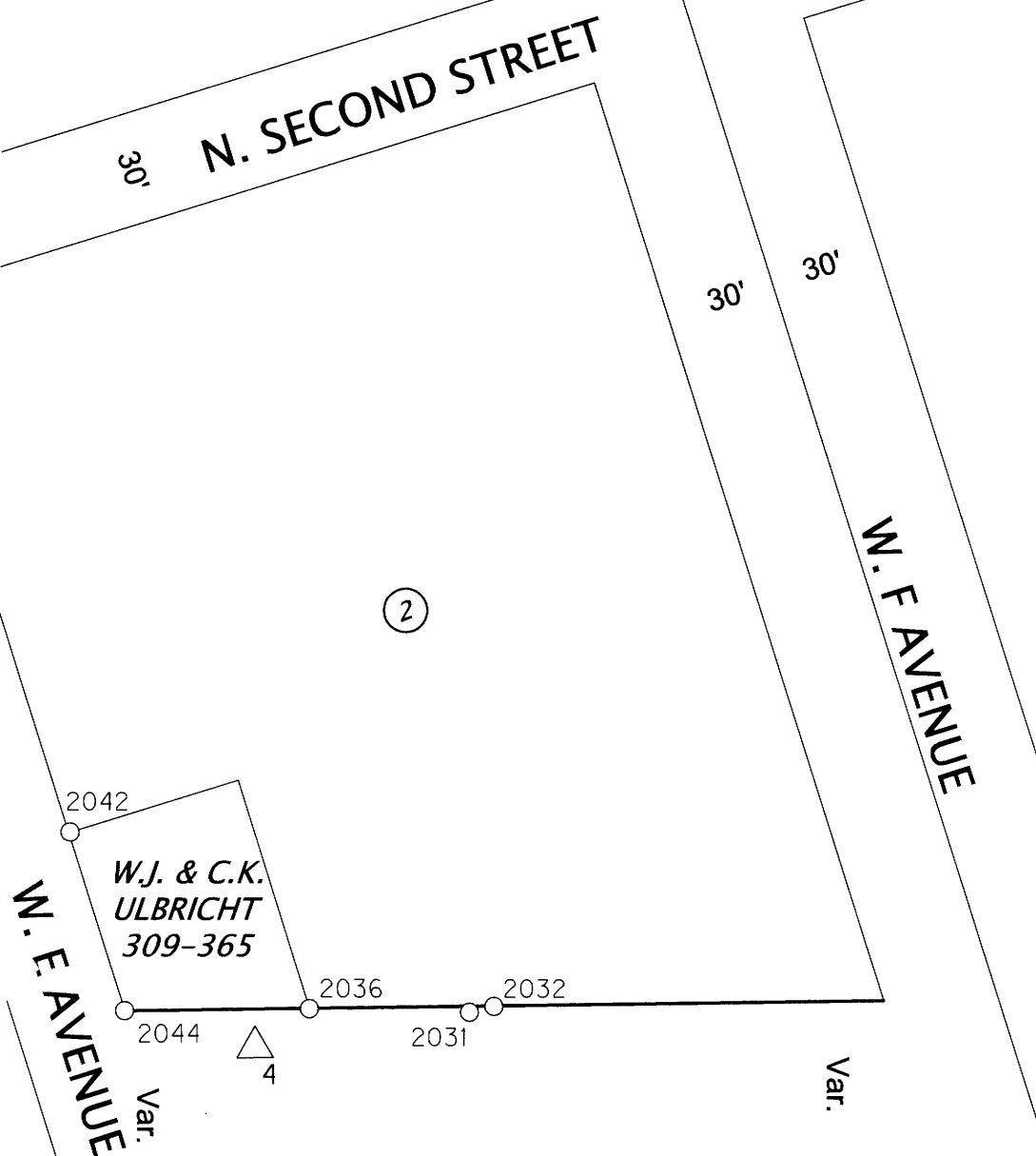
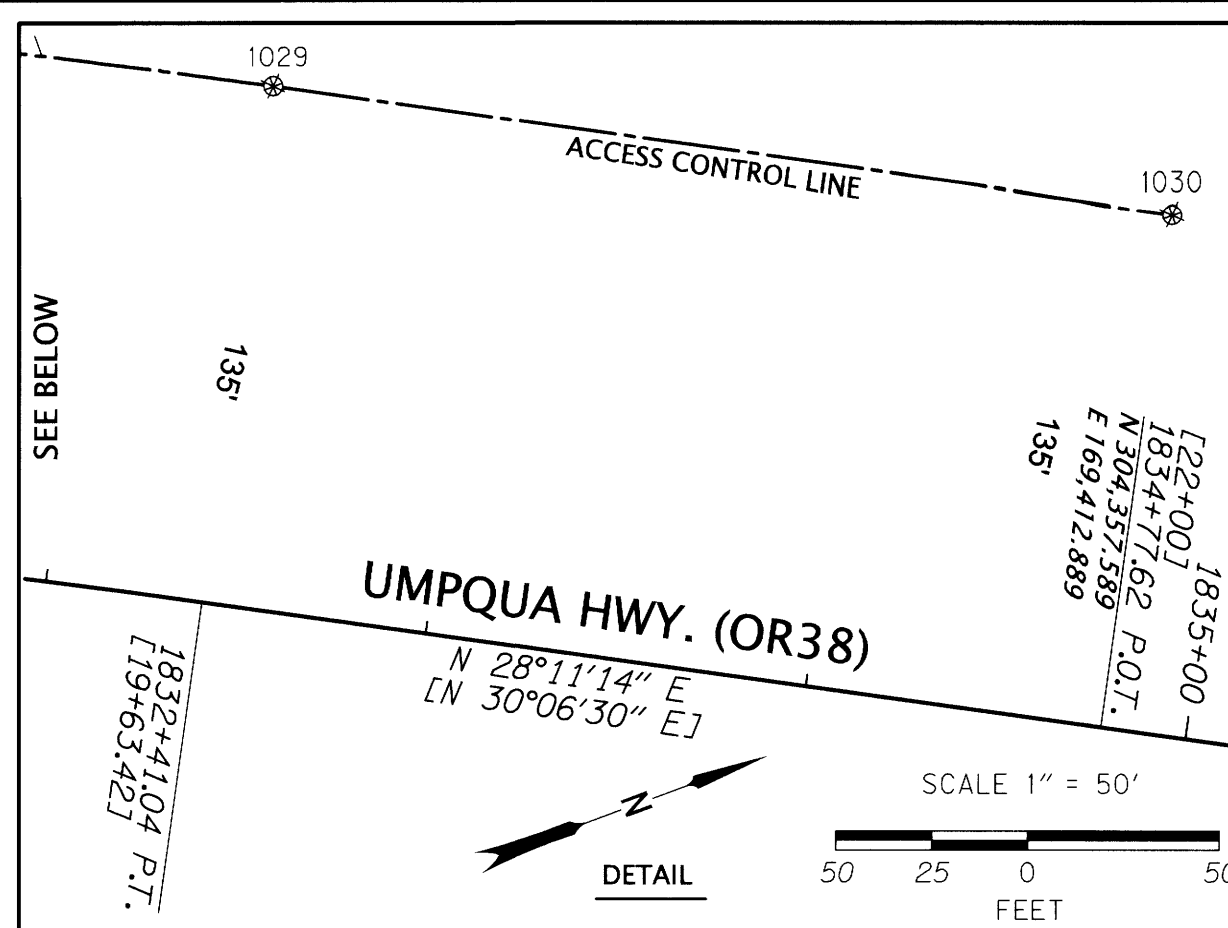


SE 1/4 SEC 8 T22S R5W WM

FILED  
 Date: 4-12-2006 By: [Signature]  
 This survey consists of:  
 Map: ST HWY 38-028A-F  
 Narrative:  
 Corner Rpt:  
 DOUGLAS COUNTY  
 SURVEYOR

PLAT OF DRAIN  
 VOL. 1, PG. 56



WARREN GOODELL  
 D.L.C. 40

DRAIN'S ADDITION  
 TO DRAIN  
 VOL. 2, PG. 3

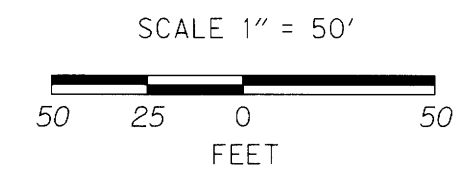
SEE SHEET 4 OF 6

SEE DETAIL ABOVE

THIS CURVE HAS BEEN MODIFIED  
 FROM RECORD INFORMATION AND  
 THE CURVE DATA AS SHOWN IS  
 CALCULATED. SEE NARRATIVE.

CENTER LINE ALIGNMENT  
 ACCORDING TO ODOT  
 ROLL MAP 9B-2-27

2°00'00" C.R.  
 R = 2864.79'  
 TΔ = 7°56'00"  
 Ts = 198.65'



FILE NAME: S\_K22387\_CRR\_DRAIN.DGN

LEGEND	
▲	SET NETWORK POINT
△	FOUND MONUMENT USED AS NETWORK POINT
○	FOUND MONUMENT
⊛	RECORD MONUMENT, NOT FOUND
—	EXISTING RIGHT-OF-WAY
—	PROPERTY LINE
—	SECTION LINE
—	D.L.C. LINE
( )	DATA PER STATE HWY. MAP 38-010
[ ]	DATA PER ODOT ROLL MAP 9B-2-27

NOTE:  
 THE BEARINGS AND COORDINATES SHOWN HEREON ARE BASED ON THE OCRS COTTAGE GROVE-CANYONVILLE ZONE. RECORD BEARINGS AND STATIONING ARE SHOWN IN PARENTHESES OR BRACKETS. ALL RESOLVED CURVE DATA AS SHOWN HEREON IS PER RECORD INFORMATION, UNLESS STATED OTHERWISE.

**DAVID EVANS AND ASSOCIATES INC.**  
 2100 S River Parkway, Suite 100  
 Portland Oregon 97201  
 Phone: 503.223.6663

REGISTERED PROFESSIONAL LAND SURVEYOR  
 [Signature]  
 OREGON  
 JANUARY 10, 2006  
 ROBERT R. JACKSON  
 47721  
 RENEWS: 6/30/2023

**OREGON DEPARTMENT OF TRANSPORTATION**  
 HORIZONTAL CONTROL, RECOVERY AND RETRACEMENT MAP  
 US101/OR38 CURB RAMPS PROJECT  
 UMPQUA HWY. 38, MILEPOSTS 50.25 TO 50.54  
 CITY OF DRAIN  
 DOUGLAS COUNTY, OREGON

ODOT REGION 3 HEAD QUARTERS  
 3500 NW STEWART PARKWAY  
 ROSEBURG, OREGON 97470 KEY NO. 22387

JANUARY 6, 2022  
 SCALE: 1"=50'  
 SHEET 5 OF 6