

REFERENCES:

ODOT RIGHT OF WAY MAPS

1B-20-16
3B-11-11
4B-16-12
9B-2-27
10B-18-23

DOUGLAS COUNTY STATE HIGHWAY MAPS

ST. HWY. 38-010 (IN METRIC UNITS)

DOUGLAS COUNTY SUBDIVISION PLATS

DRAIN (VOL. 1, PG. 56)
GARDNER'S ADDITION TO DRAIN (VOL. 1, PG. 3)
EAST DRAIN (VOL. 2, PG. 1)
DRAIN'S ADDITION TO DRAIN (VOL. 2, PG. 3)

DOUGLAS COUNTY PARTITION PLATS

PP 1993-0075
PP 1994-0096
PP 1995-0085
PP 2004-0027
PP 2007-0045

DOUGLAS COUNTY SURVEYS

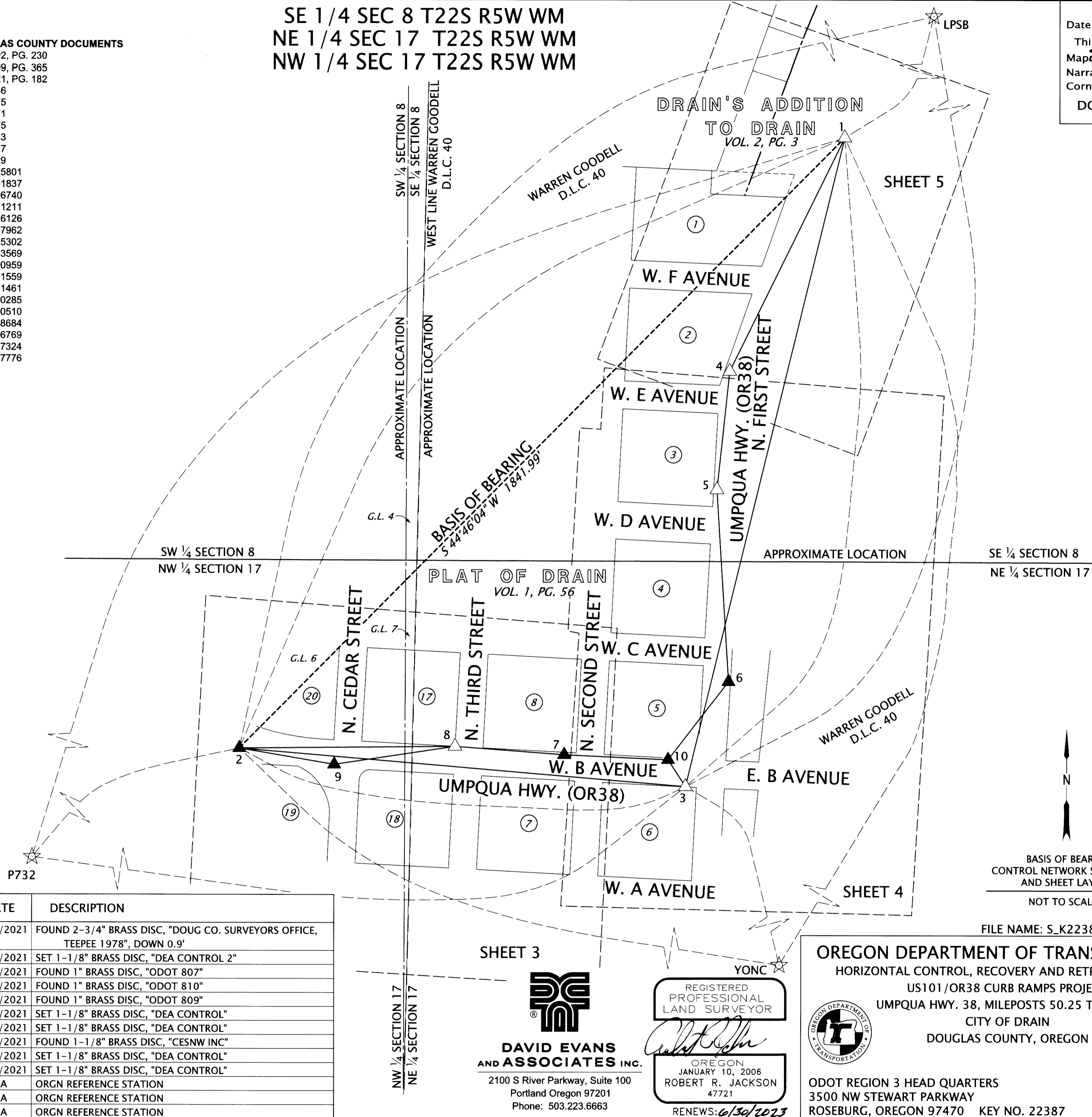
CS 41/344	M89-48
CS 55/350	M90-44
CS 58/236	M107-73
CS 58/286-8	M109-67
M9-33	M109-68
M11-69	M115-80
M14-57	M134-79
M14-60	M136-64
M19-18	M138-2
M19-22	M139-21
M19-24	M139-55
M19-25	M150-71
M20-12	M151-67
M24-71	M159-31
M51-9	M169-55
M58-18	M173-42
M69-42	M173-62
M76-60	RM2-5
M82-50	SC02-2004

DOUGLAS COUNTY DOCUMENTS

VOL. 102, PG. 230
VOL. 309, PG. 365
VOL. 521, PG. 182
68-10746
96-10675
91-12871
91-18275
90-16433
96-09627
99-22229
2003-025801
2004-001837
2004-006740
2004-011211
2004-016126
2005-017962
2007-005302
2007-013569
2009-000959
2014-001559
2015-011461
2015-000285
2015-000510
2017-008684
2017-016769
2018-017324
2020-017776

SE 1/4 SEC 8 T22S R5W WM
NE 1/4 SEC 17 T22S R5W WM
NW 1/4 SEC 17 T22S R5W WM

FILED
Date: 1/10/2022 By: DE
This survey consists of:
Map: ST. HWY 38-028A-F
Narrative:
Corner Rpt:
DOUGLAS COUNTY SURVEYOR



LEGEND	
	ORGN REFERENCE STATION
	FOUND MONUMENT USED AS NETWORK POINT
	SET NETWORK POINT
	LINES OF OBSERVATION
	GNSS OBSERVATION
	G.L. GOVERNMENT LOT

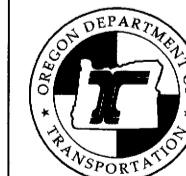
CONTROL MONUMENT LIST

PT. NO.	OCRS NORTHING	OCRS EASTING	STATION	OFFSET	DATE	DESCRIPTION
1	303689.89	169127.40	1827+48.85	23.38' RT	1/07/2021	FOUND 2-3/4" BRASS DISC, "DOUG CO. SURVEYORS OFFICE, TEEPEE 1978", DOWN 0.9'
2	302382.14	167830.21	1803+53.84	26.08' RT	1/07/2021	SET 1-1/8" BRASS DISC, "DEA CONTROL 2"
3	302300.47	168788.26	1813+09.74	29.46' RT	1/07/2021	FOUND 1" BRASS DISC, "ODOT 807"
4	303189.73	168881.60	1821+98.97	45.30' LT	1/08/2021	FOUND 1" BRASS DISC, "ODOT 810"
5	302936.01	168854.76	1819+49.05	26.01' LT	1/08/2021	FOUND 1" BRASS DISC, "ODOT 809"
6	302525.07	168880.28	1815+41.66	25.92' RT	1/08/2021	SET 1-1/8" BRASS DISC, "DEA CONTROL"
7	302368.44	168527.55	1810+45.78	24.58' LT	1/11/2021	SET 1-1/8" BRASS DISC, "DEA CONTROL"
8	302386.30	168293.34	1808+10.96	29.98' LT	1/11/2021	FOUND 1-1/8" BRASS DISC, "CESNW INC"
9	302347.23	168033.86	1805+53.92	22.80' RT	1/11/2021	SET 1-1/8" BRASS DISC, "DEA CONTROL"
10	302357.92	168750.74	1812+69.22	25.92' LT	1/08/2021	SET 1-1/8" BRASS DISC, "DEA CONTROL"
LPSB	444033.09	228001.83	NA	NA	NA	ORGN REFERENCE STATION
P732	204306.99	15708.88	NA	NA	NA	ORGN REFERENCE STATION
YONC	291884.82	173321.60	NA	NA	NA	ORGN REFERENCE STATION

DAVID EVANS AND ASSOCIATES INC.
2100 S River Parkway, Suite 100
Portland Oregon 97201
Phone: 503.223.6663

REGISTERED PROFESSIONAL LAND SURVEYOR
ROBERT R. JACKSON
47721
RENEWS: 6/30/2023

OREGON DEPARTMENT OF TRANSPORTATION
HORIZONTAL CONTROL, RECOVERY AND RETRACEMENT MAP
US101/OR38 CURB RAMPS PROJECT
UMPUQA HWY. 38, MILEPOSTS 50.25 TO 50.54
CITY OF DRAIN
DOUGLAS COUNTY, OREGON



ODOT REGION 3 HEAD QUARTERS
3500 NW STEWART PARKWAY
ROSEBURG, OREGON 97470 KEY NO. 22387

JANUARY 6, 2022
SCALE: NONE
SHEET 2 OF 6

ST. HWY. 38-028 B