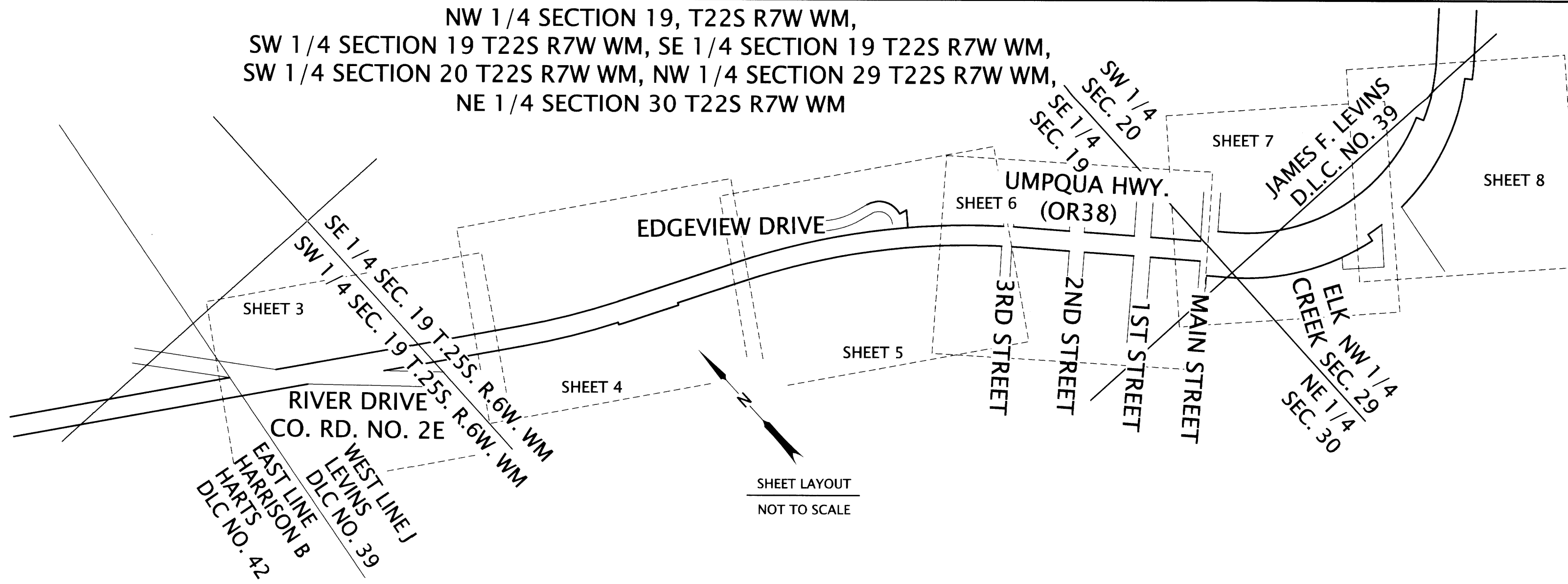


NW 1/4 SECTION 19, T22S R7W WM,  
 SW 1/4 SECTION 19 T22S R7W WM, SE 1/4 SECTION 19 T22S R7W WM,  
 SW 1/4 SECTION 20 T22S R7W WM, NW 1/4 SECTION 29 T22S R7W WM,  
 NE 1/4 SECTION 30 T22S R7W WM



FILED  
 Date: 4-10-2022 By: DE  
 This survey consists of:  
 Map: ST HWY 38-D21A-H  
 Narrative:  
 Corner Rpt:  
 DOUGLAS COUNTY SURVEYOR

**RESOLUTION NARRATIVE:**

THE PURPOSE OF THIS SURVEY IS TO SHOW FOUND MONUMENTS OF RECORD AND RESOLVE THE RIGHT OF WAY OF UMPQUA HIGHWAY (OREGON HWY. NO. 38) FROM ELKTON-SUTHERLIN HIGHWAY (OREGON HWY. NO. 138 WEST) TO NORTHWEST OF BINDER ROAD PRIOR TO SIDEWALK IMPROVEMENTS.

THE RESOLUTION IS BASED ON ST. HWY. 38-018, DOUGLAS COUNTY SURVEY RECORDS. THREE ALIGNMENTS WERE CREATED OBSERVING EQUATION STATIONS PER SAID ST. HWY. 38-018. ODOT RIGHT-OF-WAY MONUMENT #1038 MARKING STATION 1035+67.34, 40.00' LT. AND ODOT MONUMENT #1022 MARKING STATION 1063+32.30, 44.41' LT. WERE HELD. THE FORMER BEING HELD FOR STATION AND OFFSET AND THE LATTER BEING HELD FOR OFFSET. R/W WIDTHS WERE THEN HELD PER ODOT ROLL MAP 1B-22-23.

SEVERAL MONUMENTS OF RECORD FROM SURVEYS AND PLATS WERE ALSO FOUND AND TIED AND MOST AGREE WITH THE RESOLUTION. MONUMENTS SET PER EDGEVIEW ESTATES ALONG THE NORTHEASTERLY RIGHT-OF-WAY DO NOT AGREE WITH THE RESOLUTION. THE NORTHERLY RIGHT-OF-WAY WAS NOT PROPERLY RESOLVED ON THIS PLAT. THE NARRATIVE STATES THAT IT IS BASED ON SEVERAL SURVEYS OF RECORD (M140-14, M59-15 & M24-25). M140-14 DID NOT RESOLVE THE RIGHT-OF-WAY ADJACENT TO EDGEVIEW ESTATES. M59-15 ONLY USED ONE ORIGINAL MONUMENT FROM 1B-22-23 FOR THE RESOLUTION AND M24-25 DID NOT USE ANY ORIGINAL MONUMENTATION. SAID ST. HWY 38-018 SUPPORTS THE FACT THAT THE MONUMENTS SET PER EDGEVIEW ESTATES DO NOT AGREE WITH THE PROPER RESOLUTION AS WELL.

THE RIGHT-OF-WAY LINES OF THE SIDE STREETS ALONG THIS STRETCH OF HIGHWAY WERE RESOLVED AS FOLLOWS:

**ELKTON-SUTHERLIN HWY. (OR HWY 38 WEST):**

THE EASTERLY R/W WAS RESOLVED BY HOLDING FOUND MONUMENTS #1019 & #1020 AND PROJECTING SAID R/W TO THE SOUTHERLY R/W OF OR HWY. NO. 38. THE WESTERLY R/W WAS NOT RESOLVED.

**MAIN STREET:**

THE R/W OF MAIN STREET ON THE NORTHEASTERLY SIDE OF OR HWY 38 WEST WAS RESOLVED BY HOLDING FOUND MONUMENT #1022, THE BEARING BETWEEN FOUND MONUMENTS #1015 & #1002 ON 1<sup>ST</sup> STREET AND OFFSETTING THE ASSUMED 66-FOOT RECORD DISTANCE PER FIRST ADDITION TO ELKTON AND DOUGLAS COUNTY ASSESSOR MAP 22 7 20CC. THE RIGHT-OF-WAY WIDTH OF MAIN STREET ON THE SOUTHWESTERLY SIDE OF OR HWY 38 WEST VARIES DUE TO SEVERAL DEDICATIONS (INST. NO. 93-24419, INST. NO. 93-24420 & INST. NO. 93-24421). ALL OF THIS WAS VACATED PER INST. NO. 94-00398. I CALCULATED THE NORTHWESTERLY R/W BY PROJECTING THE R/W ON THE NORTHEASTERLY SIDE OF OR HWY 38 WEST. I CALCULATED THE SOUTHEASTERLY RIGHT-OF-WAY PER SAID INST. NO. 94-00398.

**1ST STREET:**

THE R/W OF 1ST STREET ON THE NORTHEASTERLY SIDE OF OR HWY 38 WEST WAS RESOLVED BY HOLDING FOUND MONUMENTS #1015 & #1002, OFFSETTING THE 66-FOOT RECORD DISTANCE PER PLAT OF ELKTON (VOLUME 1, PAGE 2, DOUGLAS COUNTY PLAT RECORDS) AND PROJECTING TO THE NORTHEASTERLY R/W OF OR HWY 38 WEST. THE R/W ON THE SOUTHWESTERLY SIDE OF OR HWY 38 WEST WAS RESOLVED BY HOLDING FOUND MONUMENT #1016, HOLDING THE BEARING BETWEEN FOUND MONUMENTS #1015 & #1002 AND OFFSETTING THE RECORD 66-FOOT DISTANCE PER SAID PLAT OF ELKTON.

**2ND STREET:**

THE R/W OF 2ND STREET ON THE NORTHEASTERLY SIDE OF OR HWY 38 WEST WAS RESOLVED BY HOLDING FOUND MONUMENTS #1012 & #1005 AND OFFSETTING THE 60-FOOT RECORD DISTANCE PER FIRST ADDITION TO ELKTON (VOLUME 1, PAGE 11, DOUGLAS COUNTY PLAT RECORDS). THE R/W ON THE SOUTHWESTERLY SIDE OF OR HWY 38 WEST WAS RESOLVED BY PROJECTING THE NORTHEASTERLY RIGHT-OF-WAY ACROSS THE HIGHWAY AND OFFSETTING THE 60-FOOT RECORD DISTANCE PER SAID FIRST ADDITION TO ELKTON.

**RESOLUTION NARRATIVE CONTINUED:**

**3RD STREET:**

THE R/W OF 3RD STREET ON THE NORTHEASTERLY SIDE OF OR HWY 38 WEST WAS RESOLVED BY HOLDING FOUND MONUMENT #1011, THE RECORD 40-FOOT DISTANCE PER SAID FIRST ADDITION TO ELKTON, HOLDING FOUND MONUMENT #1009 AND THE RECORD 60-FOOT DISTANCE PER M148-44 AND OFFSETTING THE RECORD 40-FOOT DISTANCE PER SAID FIRST ADDITION TO ELKTON. THE R/W ON THE SOUTHWESTERLY SIDE OF OR 38 WEST WAS RESOLVED BY HOLDING THE BEARING ON THE NORTHEASTERLY SIDE OF THE HIGHWAY FROM FOUND MONUMENT #1017 AND OFFSETTING THE 40-FOOT RECORD DISTANCE PER SAID FIRST ADDITION TO ELKTON.

**EDGEVIEW DRIVE**

THE CENTERLINE OF EDGEVIEW DRIVE WAS FIRST CALCULATED PER EDGEVIEW ESTATES. SAID CENTERLINE WAS THEN PLACED AT THE RECORD 20-FOOT HALF-WIDTHS PER SAID EDGEVIEW ESTATES FROM FOUND MONUMENTS #1018 & #1023. CENTERLINE WAS THEN OFFSET THE RECORD 20-FOOT PER SAID EDGEVIEW ESTATES AND RECORD DISTANCES (64.60' & 31.79') PER SAID EDGEVIEW ESTATES WERE THEN USED FROM FOUND MONUMENTS #1024 & #1006 FOR THE VARIABLE WIDTH SECTION ON THE SOUTHEASTERLY SIDE OF THE ROAD ADJACENT TO THE HIGHWAY.

**RIVER DRIVE:**

THE NORTHEASTERLY RIGHT-OF-WAY OF RIVER DRIVE WAS FIRST CALCULATED BY USING RECORD BEARINGS AND DISTANCES PER M12-39. SAID R/W WAS THEN PLACED ON FOUND MONUMENT #1026 AND ROTATED TO HOLD THE RECORD DISTANCE OF 99.61' PER SAID M12-39 FROM FOUND MONUMENT #1042. SAID NORTHEASTERLY R/W WAS THEN OFFSET THE RECORD 60-FOOT DISTANCE PER SC03 2011-002, DOUGLAS COUNTY SURVEY RECORDS.

**CONTROL NARRATIVE:**

THE BASIS OF BEARINGS AND COORDINATES FOR THIS SURVEY IS THE OREGON COORDINATE REFERENCE SYSTEM (OCRS) - COTTAGE GROVE CANYONVILLE ZONE. THE OCRS NORTHING AND EASTING PROJECTION PARAMETERS ARE REFERENCED IN O.A.R. 734-005-0015. HORIZONTAL DATUM IS NAD 83 (2011) EPOCH 2010.00. VERTICAL DATUM IS NAVD88. ALL LINEAR VALUES ARE EXPRESSED IN INTERNATIONAL FEET. PRIMARY CONTROL CONSISTS OF TWO PRIMARY PROJECT CONTROL STATIONS AND FIVE SECONDARY CONTROL STATIONS. TWO-HOUR STATIC SESSIONS WERE OBSERVED AT PROJECT CONTROL STATIONS 531 AND 525. ALL PROJECT CONTROL STATION POSITIONS WERE ESTABLISHED USING A COMBINATION OF GLOBAL NAVIGATION SATELLITE SYSTEM (GNSS) OBSERVATIONS, TERRESTRIAL TOTAL STATION MEASUREMENTS, AND DIGITAL LEVEL OBSERVATIONS. GNSS BASELINE VECTORS, TOGETHER WITH TERRESTRIAL OBSERVATIONS, WERE ADJUSTED USING LEAST SQUARES (STARNET V9.0). THE NETWORK WAS CONSTRAINED BY HOLDING THE PUBLISHED OREGON REAL-TIME GNSS NETWORK (ORGN) LATITUDE AND LONGITUDE OF FOUR CONTINUOUSLY OPERATING REFERENCE STATIONS (CORS): P731, REED, YONC, AND LPSB. THE RESULTING ERROR SEMI-MAJOR AXIS LENGTHS, AT THE 95% CONFIDENCE LEVEL FOR PRIMARY AND SECONDARY CONTROL POINTS, WERE UNDER 0.03 FEET IN ABSOLUTE ACCURACY. FINAL PROJECT COORDINATES WERE ESTABLISHED BY PROJECTING THE ADJUSTED NETWORK POSITIONS TO THE OCRS COTTAGE GROVE - CANYONVILLE ZONE, REPRESENTING APPROXIMATE GROUND DISTANCES. ALL OBSERVATIONS WERE MADE IN JANUARY THROUGH MARCH 2021, UTILIZING LEICA MS50 TOTAL STATION AND LEICA GS14 GNSS RECEIVERS WITH CS15 DATA COLLECTOR.

**REFERENCES:**

**DOUGLAS COUNTY SURVEYS**

CS 58/178-00 M32-45  
 RM 1-6 M38-42  
 HEN 19 M59-19  
 M2-26 M59-20  
 M3-62 M60-68  
 M7-46 M78-10  
 M8-22 M86-29  
 M9-4 M87-54  
 M10-53 M110-71  
 M10-54 M111-53  
 M10-55 M131-31  
 M10-56 M139-79  
 M10-57 M140-14  
 M11-26 M147-47  
 M12-39 M148-44  
 M24-25 M162-41  
 M32-40 M177-47A  
 ST HWY 38-018 M177-47B

**ODOT RIGHT OF WAY MAPS**

1B-22-23

**PARTITION PLATS**

VOL. 10, PG.28 (M104-73)  
 PP 2001-80

**PLSS CORNER MONUMENTS**

100400 (NW COR. SEC. 19)  
 175400 (NE COR. SEC. 19)  
 100300 (SE COR. SEC. 19)  
 140300 (S 1/4 COR. SEC. 19)  
 200300 (SE COR. SEC. 19)  
 039020 (NW COR. JAMES F. LEVINS DLC NO. 39)  
 039030 (W SW COR. JAMES F. LEVINS DLC NO. 39)

**SUBDIVISION PLATS**

PLAT OF ELKTON  
 FIRST ADDITION TO ELKTON  
 COMPTON SUBDIVISION  
 EDGEVIEW ESTATES

**FILING INFO.**

VOLUME 1, PAGE 2  
 VOLUME 1, PAGE 11  
 VOLUME 9, PAGE 40  
 VOLUME 21, PAGE 68

**SHEET INDEX:**

SHEET 1: NARRATIVE, REFERENCES AND SHEET LAYOUT  
 SHEET 2: BASIS OF BEARINGS AND CONTROL NETWORK SCHEMATIC  
 SHEETS 3-7: PROJECT RECOVERY DRAWINGS AND RECOVERED MONUMENT LISTS



**DAVID EVANS AND ASSOCIATES INC.**  
 2100 S River Parkway, Suite 100  
 Portland Oregon 97201  
 Phone: 503.223.6663

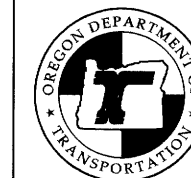
REGISTERED PROFESSIONAL LAND SURVEYOR

OREGON  
 JANUARY 10, 2006  
 ROBERT R. JACKSON  
 47721

RENEWS: 6/30/2023

FILE NAME: S\_K22387\_CRR\_ELKTON.DGN

**OREGON DEPARTMENT OF TRANSPORTATION**  
 HORIZONTAL CONTROL, RECOVERY AND RETRACEMENT MAP  
 US101/OR38 CURB RAMPS PROJECT  
 MILEPOSTS 35.62 TO 36.44  
 UMPQUA HIGHWAY  
 DOUGLAS COUNTY, OREGON



ODOT REGION 3 HEAD QUARTERS  
 3500 NW STEWART PARKWAY  
 ROSEBURG, OREGON 97470 KEY NO. 22387

DECEMBER 14, 2021  
 SCALE: NONE  
 SHEET 1 OF 8

ST. HWY. 38-027 A