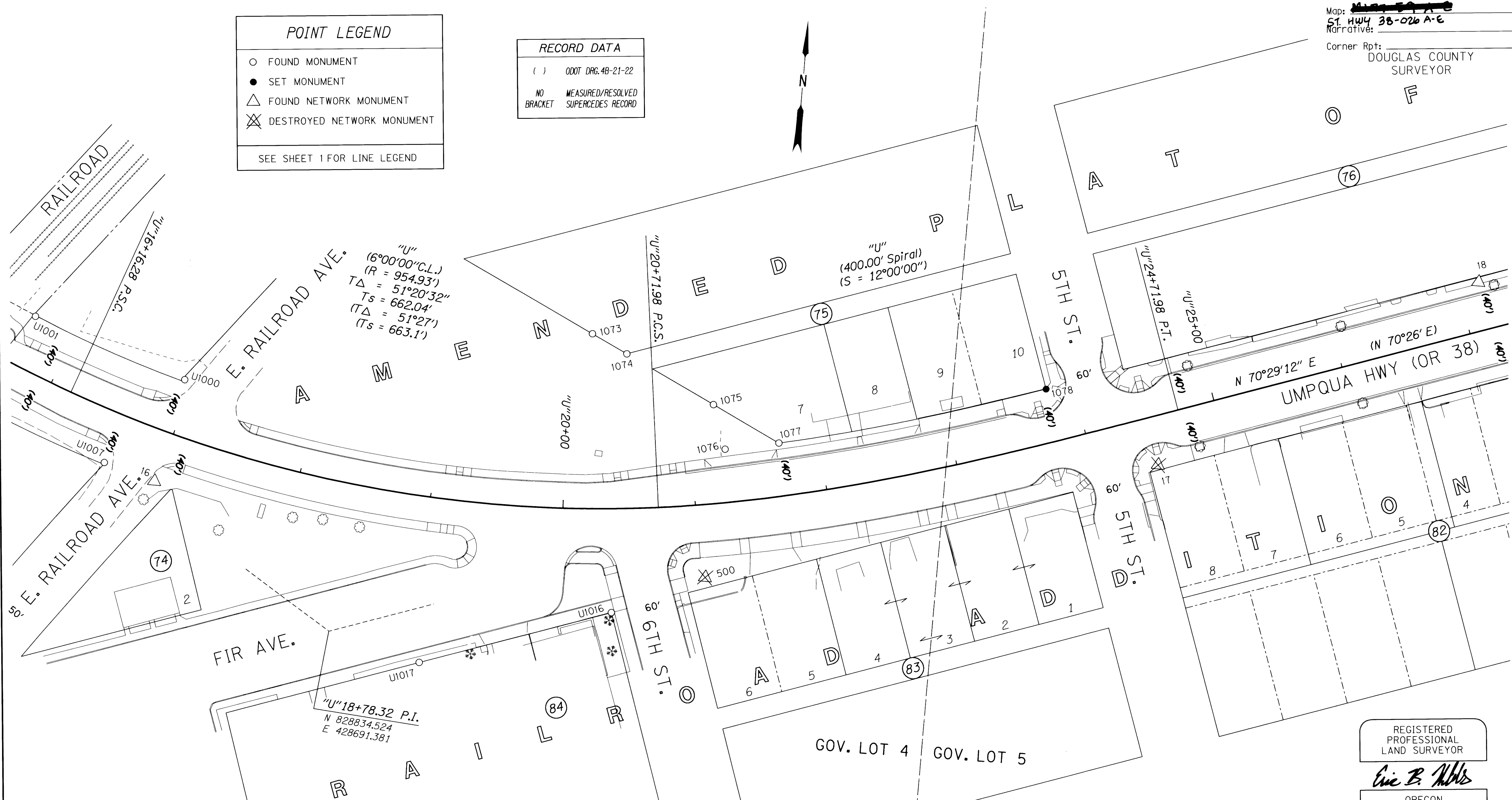
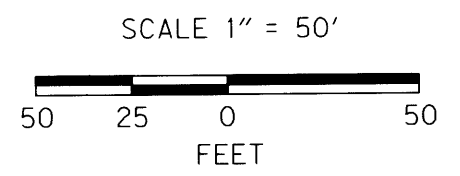


POINT LEGEND	
○	FOUND MONUMENT
●	SET MONUMENT
△	FOUND NETWORK MONUMENT
⊗	DESTROYED NETWORK MONUMENT
SEE SHEET 1 FOR LINE LEGEND	

RECORD DATA	
()	ODOT DRG. 4B-21-22
NO BRACKET	MEASURED/RESOLVED SUPERCEDES RECORD



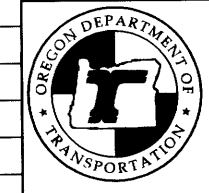
PT. NO.	OCRS NORTHING	OCRS EASTING	ELEVATION	STATION	OFFSET (- IS LEFT)	DATE	DESCRIPTION	REFERENCE
16	828935.719	428550.600	14.35	"U"16+98.56	38.32	8/26/2015	FD. 5/8" X 30" IRON REBAR W/ 1 1/2" BRASS CAP STAMPED "ODOT CONTROL 16" FLUSH WITH GROUND	ST. HWY. 101-010
17	829012.892	429304.053	10.41	"U"24+47.03	36.53	8/26/2015	DESTROYED 1" COPPER PLUG STAMPED "ODOT CONTROL 17" IN CONCRETE WALK	-
18	829171.226	429533.376	11.22	"U"27+16.04	-36.11	8/26/2015	FD. 1" COPPER PLUG STAMPED "ODOT CONTROL 18" IN CONCRETE WALK	ST. HWY. 101-010
500	828899.259	428970.498	10.26	"U"21+03.20	54.92	8/25/2015	DESTROYED 5/8" IRON REBAR WITH 1 1/2" ALUMINUM CAP STAMPED "ODOT CONTROL 500"	-
1073	829075.087	428870.049	-	"U"20+21.31	-131.90	1/20/2016	FD. 3/4" IRON REBAR FLUSH WITH GROUND SURFACE GOOD CONDITION.	M96-21
1074	829062.154	428897.188	-	"U"20+50.98	-116.49	1/20/2016	FD. 5/8" IRON REBAR WITH 1 1/4" Y.P.C. STAMP NOT LEGIBLE 1" BELOW GROUND SURFACE FAIR CONDITION.	M96-21
1075	829029.658	428970.498	-	"U"21+20.68	-74.42	1/20/2016	FD. 5/8" IRON REBAR WITH 1 1/4" Y.P.C. STAMP NOT LEGIBLE 1" BELOW GROUND SURFACE FAIR CONDITION.	M123-10
1076	828996.859	428977.246	-	"U"21+26.53	-40.06	1/20/2016	FD. 5/8" IRON REBAR WITH 1 1/4" Y.P.C. STAMP PARTIALLY LEGIBLE "STUNTZ... ENG." 1" BELOW GROUND SURFACE FAIR CONDITION.	M123-10
1077	829004.956	429017.377	-	"U"21+68.91	-39.91	1/20/2016	FD. 5/8" IRON REBAR WITH 1 1/4" Y.P.C. STAMPED "STUNTZNER ENG." FLUSH WITH A.C. SURFACE GOOD CONDITION.	M123-10
1078	829062.780	429214.958	-	"U"23+79.24	-39.91	8/26/2020	RESET 2" ALUMINUM DISK STAMPED "ODOT RESET 1078" REPLACING PRIVATE PROPERTY CORNER IN ITS ORIGINAL LOCATION	ST. HWY. 101-010
U1000	829014.046	428566.903	-	"U"16+93.99	-41.56	3/3/2007	FD. 5/8" IRON REBAR BENT TO THE NW. 0.60 FT BELOW SURFACE, IN POOR CONDITION. TIED WHERE ROD ENTERS GROUND	M124-55
U1001	829051.844	428450.430	-	"U"15+66.18	-39.41	3/3/2007	FD. 5/8" IRON REBAR WITH 1 1/4" PLASTIC CAP STAMPED "PLS 2009". 0.1 FT. ABOVE SURFACE, IN GOOD CONDITION.	M124-55
U1007	828946.634	428511.627	-	"U"16+59.65	38.61	3/3/2007	FD. 5/8" IRON REBAR WITH 1 1/4" PLASTIC CAP STAMPED "LS 2865". 1.0 FT. BELOW SURFACE, IN GOOD CONDITION.	M143-30
U1016	828866.758	428902.188	-	"U"20+35.90	78.42	6/19/2007	FD. 2 1/2" BRASS CAP STAMPED "COUNTY SURVEYORS OFFICE DOUGLAS COUNTY LOT 1 COR NO. 2 BLK 84 1956". 0.90 FT. BELOW EDGE OF CONCRETE SIDEWALK. LEANS WESTERLY, IN GOOD TO FAIR CONDITION.	M96-21
U1017	828816.839	428761.229	-	"U"19+07.27	124.76	6/19/2007	FD. 5/8" IRON REBAR 0.9 FT. BELOW SURFACE, IN POOR CONDITION.	CS51/252-1



REGISTERED PROFESSIONAL LAND SURVEYOR

Eric B. Hibbs

OREGON
NOVEMBER 13, 2018
ERIC BENJAMIN HIBBS
90437PLS
RENEWS: 06/30/2021



OREGON DEPARTMENT OF TRANSPORTATION
RIGHT OF WAY BOUNDARY MONUMENTATION MAP
OR 38: US 101-DEAN CREEK PAVING & PED IMPROVEMENTS
OREGON COAST HWY. NO. 9, US101, M.P. 211.32 TO 212.34
UMPQUA HWY. NO. 45, OR38, M.P. 0.00 TO 0.88
DOUGLAS COUNTY FILE: S-18869-RW.DGN

FOR ODOT REGION 3
3500 NW. STEWART PKWY.
ROSEBURG, OR. 97470
NOVEMBER 12, 2020
SCALE 1" = 50'
SHEET 4 OF 5