

REGISTERED PROFESSIONAL LAND SURVEYOR
 Eric B. Hibbs
 OREGON NOVEMBER 13, 2018
 ERIC BENJAMIN HIBBS
 90437PLS
 RENEWS: 06/30/2021

POINT LEGEND

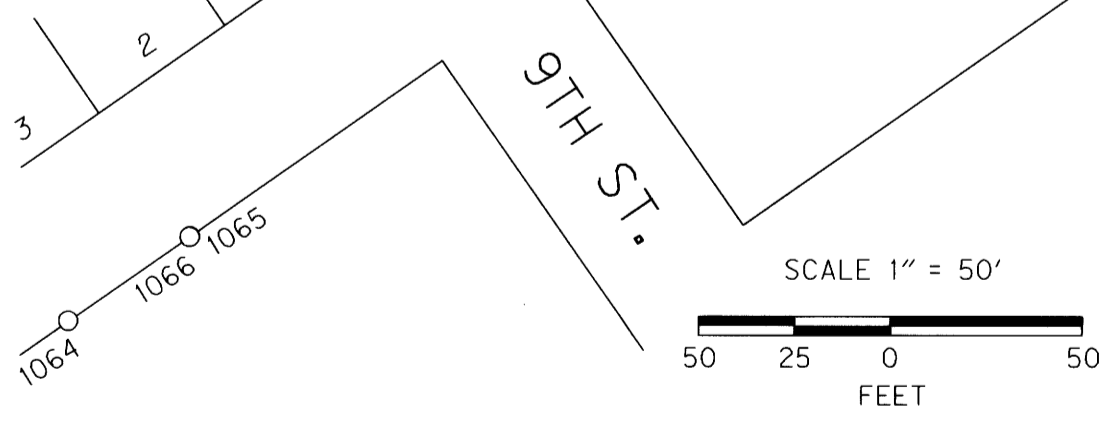
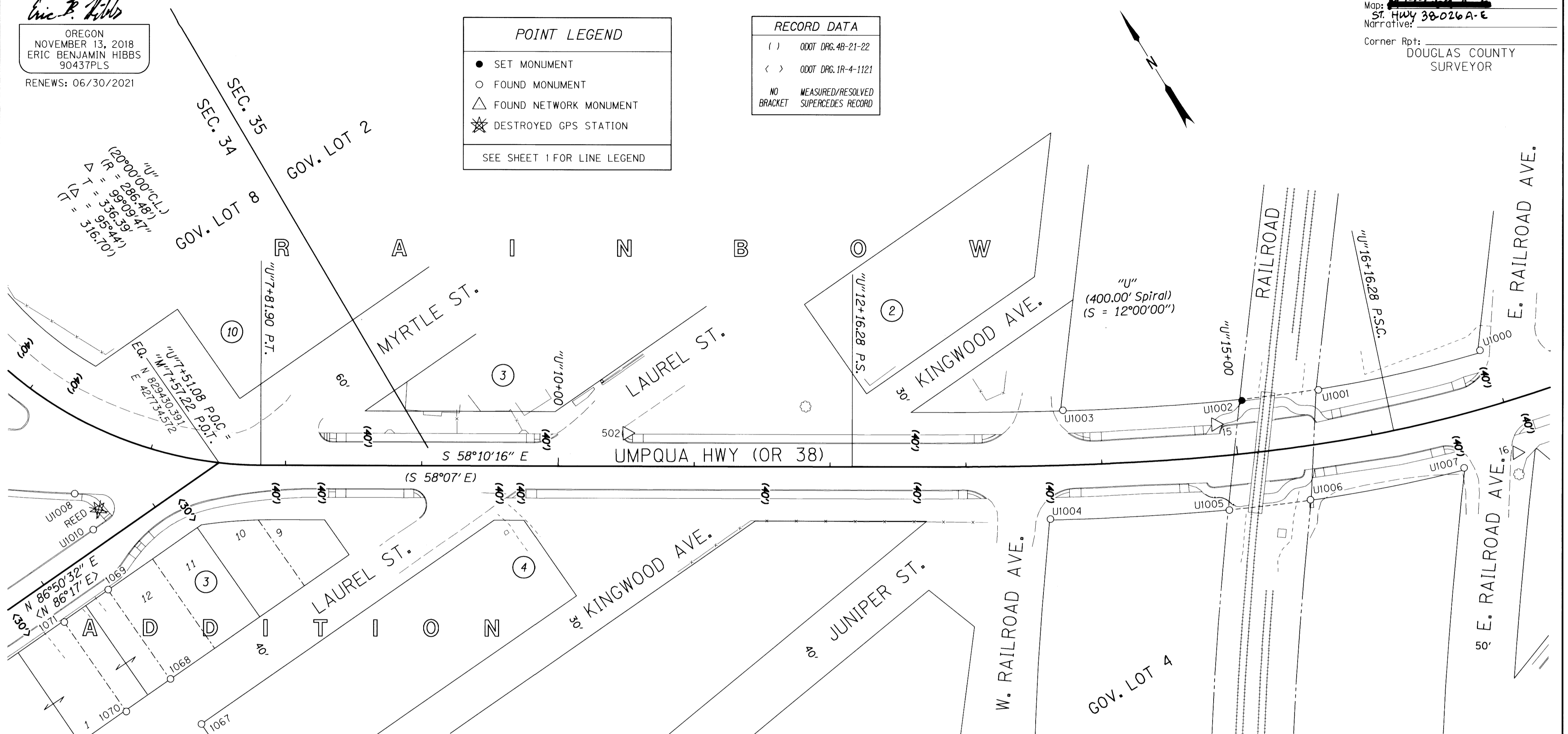
- SET MONUMENT
- FOUND MONUMENT
- △ FOUND NETWORK MONUMENT
- ✱ DESTROYED GPS STATION

SEE SHEET 1 FOR LINE LEGEND

RECORD DATA

() ODOT DRG. 4B-21-22
 < > ODOT DRG. 1R-4-1121

NO MEASURED/RESOLVED
 BRACKET SUPERCEDES RECORD



PT. NO.	OCRS NORTHING	OCRS EASTING	ELEVATION	STATION	OFFSET (- IS LEFT)	DATE	DESCRIPTION	REFERENCE
15	829069.797	428372.718	17.95	"U"14+85.96	-23.39	8/26/2015	FD. 1" COPPER PLUG STAMPED "ODOT 15" IN CONCRETE WALK	ST. HWY. 101-010
16	828935.719	428550.600	14.35	"U"16+98.56	38.32	8/26/2015	FD. 5/8" X 30" IRON REBAR W/ 1 1/2" BRASS CAP STAMPED "ODOT CONTROL 16" FLUSH WITH GROUND	ST. HWY. 101-010
502	829291.701	428000.871	12.03	"U"10+50.54	-24.26	8/26/2015	FD. 5/8" X 30" IRON REBAR W/ 1 1/2" BRASS CAP STAMPED "ODOT CONTROL 502" FLUSH WITH GROUND	ST. HWY. 38-016
1064	829265.369	427463.939	-	"M"4+77.91	149.86	1/21/2016	FD. 5/8" IRON ROD WITH 1 1/4" R.P.C. NOT LEGIBLE FLUSH WITH GROUND SURFACE GOOD CONDITION	M168-21
1065	829267.438	427502.568	-	"M"5+16.60	149.93	1/21/2016	FD. 1" O.D. IRON PIPE 0.12" NORTHERLY OF ANOTHER IRON PIPE (1066) 2" BELOW GROUND SURFACE GOOD CONDITION	M19-8
1066	829267.366	427502.464	-	"M"5+16.49	149.99	1/21/2016	FD. 3/4" O.D. IRON PIPE 0.12 SOUTHERLY OF ANOTHER IRON PIPE (1965) 3" BELOW GROUND SURFACE FAIR CONDITION	M19-8
1067	829273.823	427622.635	-	"M"6+36.83	150.16	1/21/2016	FD. 1 1/4" DIA. IRON PIPE FLUSH WITH GROUND SURFACE GOOD CONDITION	M19-8
1068	829313.975	427620.665	-	"M"6+37.08	109.96	1/22/2016	FD. 5/8" IRON REBAR TAPERS TO 1/2" ON TOP OF ROD (ERODED ON TOP) 0.2 FT BELOW GROUND SURFACE GOOD CONDITION	M19-8
1069	829393.873	427616.061	-	"M"6+36.88	29.93	1/22/2016	FD. 3/4" O.D. IRON PIPE 0.3 FT ABOVE GROUND SURFACE IN ITS ORIGINAL POSITION	M19-8
1070	829310.663	427580.354	-	"M"5+96.64	111.05	1/22/2016	FD. 1 1/4" IRON PIPE 8" BELOW GROUND SURFACE GOOD CONDITION	CS58/79
1071	829390.557	427576.054	-	"M"5+96.75	31.04	1/22/2016	FD. 1 1/4" O.D. IRON PIPE LEANS WESTERLY (TIED WHERE ENTERS GROUND) 1.0 FT BELOW GROUND SURFACE IN ITS ORIGINAL POSITION	CS58/79
U1000	829014.046	428566.903	-	"U"16+93.99	-41.56	3/3/2007	FD. 5/8" IRON REBAR BENT TO THE NW. 0.60 FT BELOW SURFACE, IN POOR CONDITION TIED WHERE ROD ENTERS GROUND	M124-55
U1001	829051.844	428450.430	-	"U"15+66.18	-39.41	3/3/2007	FD. 5/8" IRON REBAR WITH 1 1/4" PLASTIC CAP STAMPED "PLS 2009". 0.1 FT. ABOVE SURFACE, IN GOOD CONDITION	M124-55
U1002	829074.729	428398.439	-	"U"15+07.43	-39.07	8/26/2020	RESET 5/8" IRON REBAR WITH 2" ALUMINUM CAP STAMPED "ODOT RESET U1002"	M124-55
U1003	829137.674	428282.689	-	"U"13+72.51	-40.38	3/3/2007	FD. 5/8" IRON REBAR WITH 1 1/4" PLASTIC CAP STAMPED "PLS 2009". 0.1 FT. ABOVE SURFACE, IN GOOD CONDITION	M124-55
U1004	829074.393	428232.836	-	"U"13+61.15	39.37	3/3/2007	FD. 5/8" IRON REBAR 0.20 FT. ABOVE SURFACE IN GOOD CONDITION	M124-55
U1005	829010.879	428348.245	-	"U"14+90.09	40.27	3/3/2007	FD. 5/8" IRON REBAR WITH 1 1/4" PLASTIC CAP STAMPED "PLS 2009". 0.1 FT. ABOVE SURFACE, IN GOOD CONDITION, CAP IN FAIR CONDITION	M124-55
U1006	828986.023	428403.024	-	"U"15+48.40	39.73	3/3/2007	FD. PK NAIL AND WASHER FD. IN OLD CONCRETE SIGN BASE	M143-30
U1007	828946.634	428511.627	-	"U"16+59.65	38.61	3/3/2007	FD. 5/8" IRON REBAR WITH 1 1/4" PLASTIC CAP STAMPED "LS 2865". 1.0 FT. BELOW SURFACE, IN GOOD CONDITION	M143-30
U1008	829466.781	427632.154	-	"U"6+62.00	50.53	3/3/2007	FD. 3" BRASS DISK STAMPED "DOUGLAS CO. SURVEYORS OFFICE". FD. IN CONCRETE CURB, IN GOOD CONDITION	ST. HWY. 38-016
U1010	829437.146	427629.883	-	"M"6+53.07	-12.51	3/3/2007	FD. 3" BRASS DISK STAMPED "DOUGLAS CO. SURVEYORS OFFICE". FD. IN CONCRETE CURB, IN GOOD CONDITION	ST. HWY. 38-016
REED	829447.663	427640.917	11.52	"U"6+79.42	54.66	8/13/2015	DESTROYED 2" ALUMINUM DISK STAMPED "ODOT REED" FLUSH WITH CONCRETE	ST. HWY. 101-008

OREGON DEPARTMENT OF TRANSPORTATION
 RIGHT OF WAY BOUNDARY MONUMENTATION MAP
 OR 38: US 101-DEAN CREEK PAVING & PED IMPROVEMENTS
 OREGON COAST HWY. NO. 9, US101, M.P. 211.32 TO 212.34
 UMPQUA HWY. NO. 45, OR38, M.P. 0.00 TO 0.88
 DOUGLAS COUNTY FILE: S.18869_RW.DGN

FOR ODOT REGION 3 NOVEMBER 12, 2020
 3500 NW. STEWART PKWY. SCALE 1" = 50'
 ROSEBURG, OR. 97470 SHEET 3 OF 5