

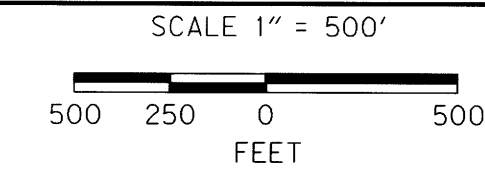
ORIGINAL NETWORK OBSERVATIONS	
OCCUPIED	MEASURED
E755	1, 2, 511
1	E755, 2, 511, 3
2	E755, 1, 511, 3
511	E755, 1, 2, 3, 4
3	1, 2, 511, 4, 5
4	2, 511, 3, 5, 6
5	3, 4, 6, 7, 21
6	4, 5, 7, 8
7	4, 5, 6, 8, 9, 21
8	6, 7, 9, 505
9	7, 8, 505, 10
505	8, 9, 10, 11, 12
10	9, 505, 11, 12, 13
11	505, 10, 12, 13, 14
12	505, 10, 11, 13, 503
13	10, 11, 12, 503, REED, 14
503	10, 12, 13, 14, REED
14	11, 13, 503, 15
REED	13, 503, 15, 502
502	REED, 15, 16,
15	REED, 502, 16, 21, 14
16	502, 500, 21, 15, 17
21	5, 7, 15, 16
500	15, 16, 17, 18, 19
17	16, 500, 18, 19
18	500, 17, 19, 20
19	500, 17, 18, 20, GPS1
20	18, 19, GPS1
GPS1	18, 19, 20

**POINT LEGEND**

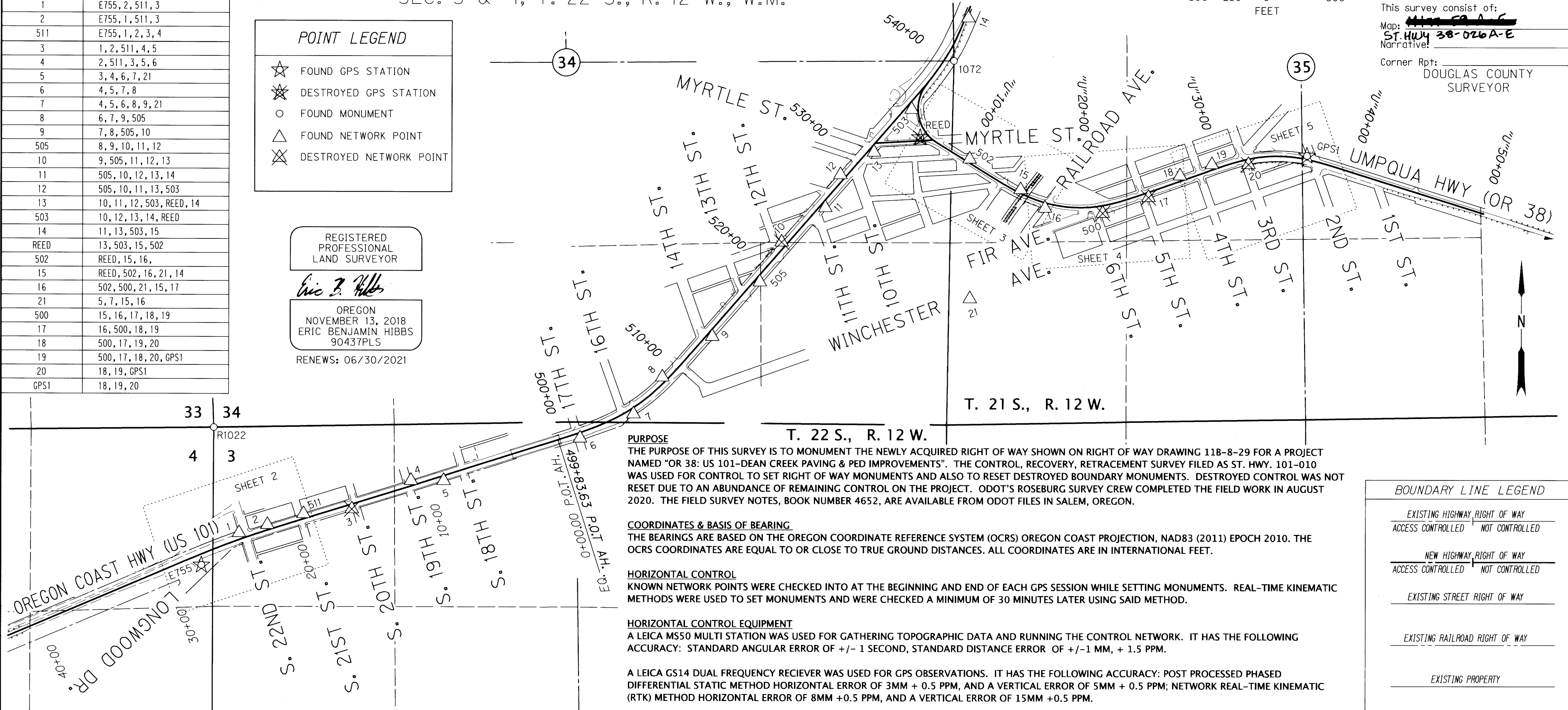
- ☆ FOUND GPS STATION
- ✖ DESTROYED GPS STATION
- FOUND MONUMENT
- △ FOUND NETWORK POINT
- ✖ DESTROYED NETWORK POINT

REGISTERED PROFESSIONAL LAND SURVEYOR  
*Eric B. Hibbs*  
 OREGON  
 NOVEMBER 13, 2018  
 ERIC BENJAMIN HIBBS  
 90437PLS  
 RENEWS: 06/30/2021

SEC. 34 & 35, T. 21 S., R. 12 W., W.M.  
 SEC. 3 & 4, T. 22 S., R. 12 W., W.M.



FILED  
 Date: 11-25-2020 By: *Di*  
 This survey consist of:  
 Map: ~~11B-8-29~~  
 Narrative: ST. HWY 38-026A-E  
 Corner Rpt: DOUGLAS COUNTY SURVEYOR



**PURPOSE**  
 THE PURPOSE OF THIS SURVEY IS TO MONUMENT THE NEWLY ACQUIRED RIGHT OF WAY SHOWN ON RIGHT OF WAY DRAWING 11B-8-29 FOR A PROJECT NAMED "OR 38: US 101-DEAN CREEK PAVING & PED IMPROVEMENTS". THE CONTROL, RECOVERY, RETRACEMENT SURVEY FILED AS ST. HWY. 101-010 WAS USED FOR CONTROL TO SET RIGHT OF WAY MONUMENTS AND ALSO TO RESET DESTROYED BOUNDARY MONUMENTS. DESTROYED CONTROL WAS NOT RESET DUE TO AN ABUNDANCE OF REMAINING CONTROL ON THE PROJECT. ODOT'S ROSEBURG SURVEY CREW COMPLETED THE FIELD WORK IN AUGUST 2020. THE FIELD SURVEY NOTES, BOOK NUMBER 4652, ARE AVAILABLE FROM ODOT FILES IN SALEM, OREGON.

**COORDINATES & BASIS OF BEARING**  
 THE BEARINGS ARE BASED ON THE OREGON COORDINATE REFERENCE SYSTEM (OCRS) OREGON COAST PROJECTION, NAD83 (2011) EPOCH 2010. THE OCRS COORDINATES ARE EQUAL TO OR CLOSE TO TRUE GROUND DISTANCES. ALL COORDINATES ARE IN INTERNATIONAL FEET.

**HORIZONTAL CONTROL**  
 KNOWN NETWORK POINTS WERE CHECKED INTO AT THE BEGINNING AND END OF EACH GPS SESSION WHILE SETTING MONUMENTS. REAL-TIME KINEMATIC METHODS WERE USED TO SET MONUMENTS AND WERE CHECKED A MINIMUM OF 30 MINUTES LATER USING SAID METHOD.

**HORIZONTAL CONTROL EQUIPMENT**  
 A LEICA M550 MULTI STATION WAS USED FOR GATHERING TOPOGRAPHIC DATA AND RUNNING THE CONTROL NETWORK. IT HAS THE FOLLOWING ACCURACY: STANDARD ANGULAR ERROR OF +/- 1 SECOND, STANDARD DISTANCE ERROR OF +/- 1 MM, + 1.5 PPM.

A LEICA GS14 DUAL FREQUENCY RECEIVER WAS USED FOR GPS OBSERVATIONS. IT HAS THE FOLLOWING ACCURACY: POST PROCESSED PHASED DIFFERENTIAL STATIC METHOD HORIZONTAL ERROR OF 3MM + 0.5 PPM, AND A VERTICAL ERROR OF 5MM + 0.5 PPM; NETWORK REAL-TIME KINEMATIC (RTK) METHOD HORIZONTAL ERROR OF 8MM + 0.5 PPM, AND A VERTICAL ERROR OF 15MM + 0.5 PPM.

**NOTES:**  
 1) THE EXISTING RIGHT OF WAY OF 22ND STREET WAS REALIGNED USING FILED SURVEY M170-54 HOLDING MONUMENT R5000 AND ROTATING TO MONUMENT R1022.  
 2) NETWORK POINTS SET DURING THIS SURVEY DO NOT REPRESENT PROPERTY LINES OR RIGHT OF WAY LINES. THEY ARE ONLY INTENDED TO PERPETUATE THE ALIGNMENTS AND RIGHT OF WAY DEVELOPED FOR THIS PROJECT IN CONFORMANCE WITH O.R.S. CHAPTER 209, SECTION 155.

**BOUNDARY LINE LEGEND**

- EXISTING HIGHWAY RIGHT OF WAY ACCESS CONTROLLED / NOT CONTROLLED
- NEW HIGHWAY RIGHT OF WAY ACCESS CONTROLLED / NOT CONTROLLED
- EXISTING STREET RIGHT OF WAY
- EXISTING RAILROAD RIGHT OF WAY
- EXISTING PROPERTY
- EXISTING SUBDIVISION
- TOWNSHIP
- SECTION
- 1/4 SECTION
- 1/16 SECTION OR GOVERNMENT LOT

MONUMENTS NOT SHOWN ON INDIVIDUAL SHEETS

PT. NO.	OCRS NORTHING	OCRS EASTING	ELEVATION	STATION	OFFSET (- IS LEFT)	DATE	DESCRIPTION	REFERENCE
3	826735.883	423512.762	68.14	15+77.63	-34.81	8/25/2015	DESTROYED 1" COPPER PLUG STAMPED "ODOT 3" IN CONCRETE WALK	ST. HWY. 101-010
4	826943.977	423942.206	68.67	11+05.59	37.27	8/25/2015	FD. 1" COPPER PLUG STAMPED "ODOT 4" IN CONCRETE WALK	ST. HWY. 101-010
5	826942.947	424179.403	62.78	8+79.86	-35.60	8/25/2015	FD. 1" COPPER PLUG STAMPED "ODOT 5" IN CONCRETE WALK	ST. HWY. 101-010
6	827255.697	425167.937	12.81	501+39.81	38.19	8/25/2015	FD. 1" COPPER PLUG STAMPED "ODOT 6" IN CONCRETE WALK	ST. HWY. 101-010
7	827432.050	425556.321	12.92	505+57.97	40.86	8/25/2015	FD. 1" COPPER PLUG STAMPED "ODOT 7" IN CONCRETE WALK	ST. HWY. 101-010
8	827700.708	425765.741	9.20	508+89.68	-36.22	8/25/2015	FD. 1" COPPER PLUG STAMPED "ODOT 8" IN CONCRETE WALK	ST. HWY. 101-010
9	827996.446	426129.184	11.58	513+54.05	36.84	8/25/2015	FD. 1" COPPER PLUG STAMPED "ODOT 9" IN CONCRETE WALK	ST. HWY. 101-010
10	828685.191	426633.400	11.09	522+04.47	-36.60	8/25/2015	DESTROYED RAILROAD SPIKE IN A.C. ISLAND	ST. HWY. 101-010
11	828935.847	426950.830	12.60	526+02.08	37.53	8/25/2015	FD. 1" COPPER PLUG STAMPED "ODOT 11" IN CONCRETE WALK	ST. HWY. 101-010
12	829175.912	427061.070	12.60	528+55.40	-37.40	8/25/2015	FD. 1" COPPER PLUG STAMPED "ODOT 12" IN CONCRETE WALK	ST. HWY. 101-010
13	829339.905	427304.866	12.27	531+39.30	38.30	8/25/2015	FD. 1" COPPER PLUG STAMPED "ODOT 13" IN CONCRETE WALK	ST. HWY. 101-010
21	828274.879	428004.584	-	-	-	8/25/2015	FD. 1" COPPER PLUG STAMPED "ODOT 21" IN CONCRETE WALK	ST. HWY. 101-010
503	829651.919	427578.547	14.00	535+54.33	39.12	8/25/2015	FD. 1" COPPER PLUG STAMPED "ODOT CONTROL 503" IN CONCRETE WALK	ST. HWY. 101-010
505	828394.317	426475.250	14.33	518+81.37	35.68	8/25/2015	FD. 1" COPPER PLUG STAMPED "ODOT CONTROL 505" IN CONCRETE WALK	ST. HWY. 38-016
1072	830006.195	427885.474	-	540+13.74	62.92	1/21/2016	FD. 3 1/2" BRASS DISK STAMPED "CORPS. OF ENGINEERS U.S. ARMY SURVEY MARKER "T21S R12W 1/4 34 35 1966" FLUSH WITH GROUND GOOD CONDITION.	CORNERS/2112W/500140
R1022	827328.544	422506.766	-	-	-	8/11/2009	FD. 1 1/4" PIPE WITH 2 1/2" BRASS CAP STAMPED "COUNTY SURVEYORS OFFICE 1967 T21S R12W S33 S34 S4 S3 T22S" ATOP 12" DIAMETER CONCRETE PEDESTAL, CAP 0.2 FT. ABOVE CONCRETE AND CONCRETE FLUSH WITH SURFACE GOOD CONDITION.	ST. HWY. 101-008

**OREGON DEPARTMENT OF TRANSPORTATION**  
 RIGHT OF WAY BOUNDARY MONUMENTATION MAP  
 OR 38: US 101-DEAN CREEK PAVING & PED IMPROVEMENTS  
 OREGON COAST HWY. NO. 9, US101, M.P. 211.32 TO 212.34  
 UMPQUA HWY. NO. 45, OR38, M.P. 0.00 TO 0.88  
 DOUGLAS COUNTY FILE: S-18869.RW.DGN

FOR ODOT REGION 3 NOVEMBER 12, 2020  
 3500 NW. STEWART PKWY. SCALE 1" = 500'  
 ROSEBURG, OR. 97470 SHEET 1 OF 5