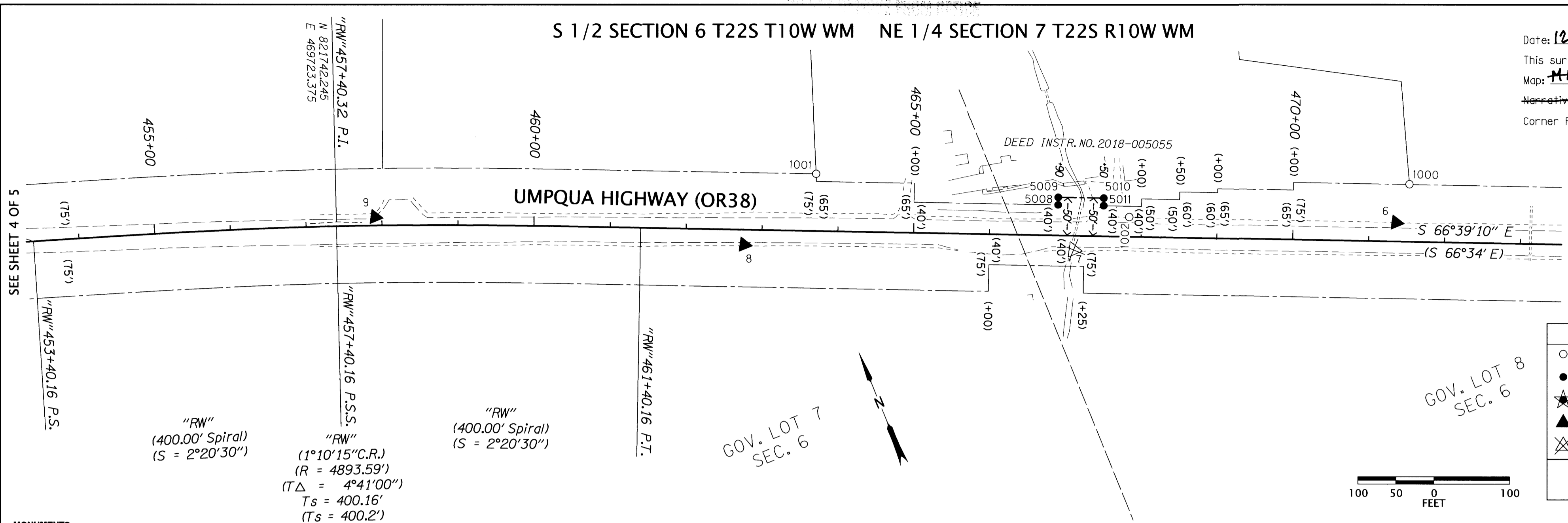


Date: 12-18-2019 By: D
 This survey consist of:
 Map: H170-33 A-E
 Narrative: St. Hwy 38-025 A-E
 Corner Rpt: DOUGLAS COUNTY SURVEYOR

MAP FILE M174-33-E

S 1/2 SECTION 6 T22S T10W WM NE 1/4 SECTION 7 T22S R10W WM



POINT LEGEND

- FOUND MONUMENT
- SET ROW MONUMENT
- ★ SET GPS STATION
- ▲ SET NETWORK POINT
- ⊗ DESTROYED NETWORK POINT

FOR BOUNDARY LINE LEGEND SEE SHEET 1

PT. NO.	OCRS NORTHING	OCRS EASTING	ELEVATION	STATION	OFFSET (- IS LEFT)	DATE	DESCRIPTION	REFERENCE
1	820242.388	472778.513	21.71	0.000	0.00	3/13/2015	SET 1" COPPER PLUG "ODOT CONTROL 1" IN PAVEMENT	-
2	820616.327	472244.742	17.85	"RW"484+98.34	-42.51	3/13/2015	SET 1" COPPER PLUG "ODOT CONTROL 2" IN PAVEMENT	-
4	820832.252	471739.687	22.59	"RW"479+53.65	22.35	3/13/2015	SET 1" COPPER PLUG "ODOT CONTROL 4" IN PAVEMENT	-
5	821061.373	471370.046	20.99	"RW"475+21.54	-27.72	3/13/2015	SET 5/8" REBAR WITH 1-1/2" ALUMINUM CAP "ODOT CONTROL 5"	-
6	821211.683	471014.596	20.54	"RW"471+35.76	-24.60	3/13/2015	SET 5/8" REBAR WITH 1-1/2" ALUMINUM CAP "ODOT CONTROL 6"	-
7	821340.291	470607.858	22.72	"RW"467+11.36	18.52	3/13/2015	SET 5/8" REBAR WITH 1-1/2" ALUMINUM CAP "ODOT CONTROL 7" (DESTROYED DURING CONSTRUCTION OR MAINTENANCE)	-
8	821511.355	470208.575	20.84	"RW"462+76.98	19.70	3/13/2015	SET 5/8" REBAR WITH 1-1/2" ALUMINUM CAP "ODOT CONTROL 8"	-
9	821729.090	469772.964	21.11	"RW"457+91.06	-11.20	3/13/2015	SET 1" COPPER PLUG "ODOT CONTROL 9" IN PAVEMENT	-
1000	821251.560	471050.154	-	"RW"471+52.61	-75.30	3/16/2015	FOUND 3/4" SMOOTH IRON ROD 0.30 FT. ABOVE SURFACE	M65-33
1001	821561.343	470331.719	-	"RW"463+70.23	-75.00	3/17/2015	FOUND 3/4" IRON ROD 1.0 FT. BELOW SURFACE	M65-33
1002	821352.060	470692.128	-	"RW"467+84.07	-25.68	3/17/2015	FOUND 5/8" IRON ROD WITH YELLOW PLASTIC CAP "ESTABROOK LS2703" 0.1 FT. BELOW SURFACE	M140-22
5008	821402.483	470611.436	-	"RW"466+90.00	-40.00	11/20/2019	SET 5/8" X 30" IRON REBAR WITH 2" ALUMINUM CAP STAMPED "ODOT RIGHT OF WAY 5008" 0.2 FEET BELOW GROUND WITH CARSONITE POST NEARBY	-
5009	821411.664	470615.399	-	"RW"466+90.00	-50.00	11/20/2019	SET 5/8" X 30" IRON REBAR WITH 2" ALUMINUM CAP STAMPED "ODOT RIGHT OF WAY 5009" 0.4 FEET BELOW GROUND	-
5010	821387.886	470670.487	-	"RW"467+90.00	-50.00	11/20/2019	SET 5/8" X 30" IRON REBAR WITH 2" ALUMINUM CAP STAMPED "ODOT RIGHT OF WAY 5010" FLUSH WITH PAVEMENT	-
5011	821378.705	470666.523	-	"RW"467+90.00	-40.00	11/20/2019	SET 5/8" X 30" IRON REBAR WITH 2" ALUMINUM CAP STAMPED "ODOT RIGHT OF WAY 5011" FLUSH WITH PAVEMENT	-

OREGON DEPARTMENT OF TRANSPORTATION
 HORIZONTAL CONTROL, RECOVERY, RETRACEMENT
 & RIGHT OF WAY MONUMENTATION BOUNDARY MAP
 OR38: HOAGLAND CR AND UNNAMED CR CULVERTS
 UMPQUA HIGHWAY NO. 45 M.P. 6.1 - 9.2
 DOUGLAS COUNTY
 FILE: 19810RW.DGN :: RWM

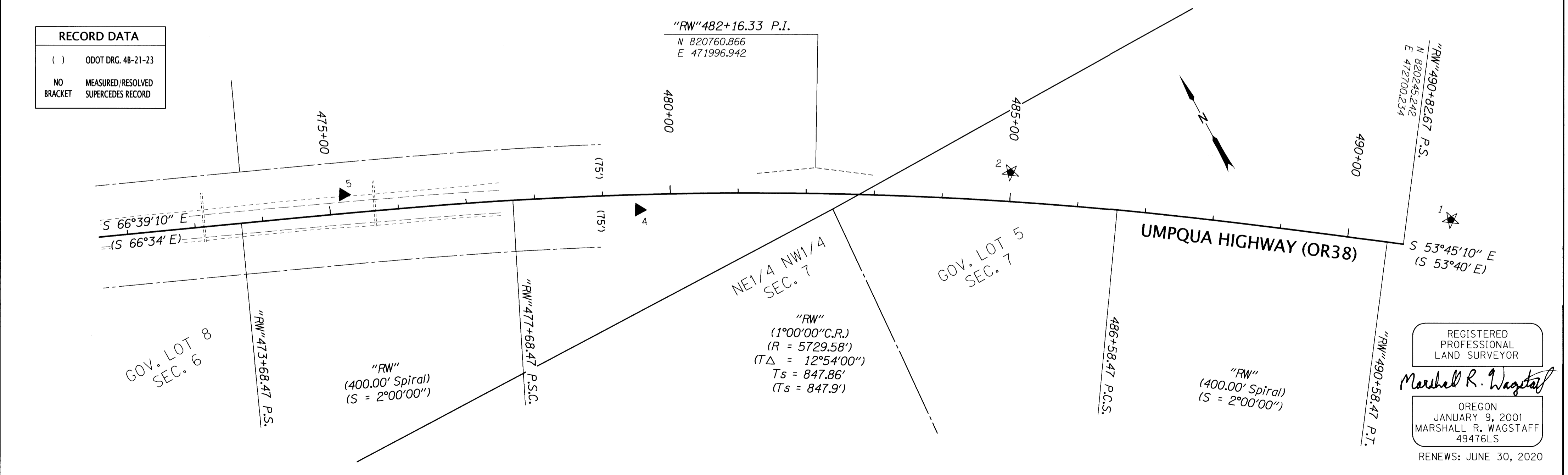
ODOT REGION 3 TECH CENTER
 3500 NW STEWART PKWY.
 ROSEBURG, OR 97470

DECEMBER 17, 2019
 SCALE: 1" = 100'
 SHEET 5 OF 5

RECORD DATA

() ODOT DRG. 48-21-23

NO MEASURED/RESOLVED
 BRACKET SUPERCEDES RECORD



REGISTERED PROFESSIONAL LAND SURVEYOR
 Marshall R. Wagstaff
 OREGON
 JANUARY 9, 2001
 MARSHALL R. WAGSTAFF
 49476LS
 RENEWS: JUNE 30, 2020