

REGISTERED PROFESSIONAL LAND SURVEYOR  
*Walt D.*

OREGON  
 NOVEMBER 10, 2011  
 MICKEY D. CALVERT  
 75099

RENEWS: 12-31-2019

FILED  
 Date: 8-21-2019 By: *pi*  
 This survey consist of:  
 Map: St. Hwy 38-024 A-C  
 Narrative:  
 Corner Rpt: DOUGLAS COUNTY SURVEYOR

**PURPOSE**  
 THE PURPOSE OF THIS SURVEY IS SET CONTROL, RECOVER MONUMENTS, RESOLVE THE RIGHT OF WAY, AND SET NEW RIGHT OF WAY MONUMENTS FOR A PROJECT NAMED "OR38/US101: SMALL AND LARGE CULVERT UPGRADES" ON HIGHWAY OR38 AT MILE POINT 41.98 (GREEN CREEK). ODOT'S SALEM SURVEY CREW COMPLETED CONTROL AND RECOVERY FIELD WORK IN MARCH OF 2015. ODOT'S ROSEBURG SURVEY CREW VERIFIED EXISTING CONTROL AND MONUMENTS AND SET NEW RIGHT OF WAY MONUMENTS USING ODOT RIGHT OF WAY DRAWING (DRG.) 11B-8-21 AND INSTRUMENT NUMBER 2017-009187 OFFICIAL RECORDS OF DOUGLAS COUNTY IN AUGUST OF 2019.

**COORDINATES & BASIS OF BEARING**  
 THE BEARINGS ARE BASED ON THE OREGON COORDINATE REFERENCE SYSTEM (OCRS), COTTAGE GROVE - CANYONVILLE ZONE, NAD83 (2011) EPOCH 2010. THE OCRS COORDINATES ARE EQUAL TO OR CLOSE TO TRUE GROUND DISTANCES. ALL COORDINATES ARE IN INTERNATIONAL FEET.

**HORIZONTAL CONTROL**  
 A STATIC GPS NETWORK WAS COMPLETED ON TWO POINTS AND USED AS PRIMARY CONTROL FOR THE PROJECT. ONE POINT WAS SET AS A PART OF THIS PROJECT AND NAMED "6". THE OTHER POINT WAS PREVIOUSLY SET BY "US COAST AND GEODETIC SURVEY" WITH THE DESIGNATION OF "H246". BOTH POINTS WERE DOUBLE OCCUPIED FOR A MINIMUM OF 2 HOURS PER OCCUPATION. COORDINATES WERE CALCULATED ON THESE CONTROL POINTS BY HOLDING OREGON REAL TIME NETWORK (ORGN) STATIONS REED, YONC, AND RSBG. USING RINEX FILES DOWNLOADED FROM THESE STATIONS. ADDITIONAL CONTROL POINTS "1" THRU "5" WERE SET AND A TERRESTRIAL NETWORK WAS COMPLETED HOLDING "H246" AND "6".

**HORIZONTAL CONTROL EQUIPMENT**  
 A LEICA TS15 TOTAL STATION WAS USED FOR GATHERING TOPOGRAPHIC DATA AND RUNNING THE CONTROL NETWORK. IT HAS THE FOLLOWING ACCURACY: STANDARD ANGULAR ERROR OF +/- 1 SECOND, STANDARD DISTANCE ERROR OF +/- 1 MM, + 1.5 PPM.

TWO LEICA GS14 DUAL FREQUENCY GPS RECEIVERS WERE USED FOR GPS OBSERVATIONS. THEY HAVE THE FOLLOWING ACCURACY: PHASED DIFFERENTIAL STATIC METHOD HORIZONTAL ERROR OF 5 MM + 0.5 PPM, AND A VERTICAL ERROR OF 10 MM, + 0.5 PPM; PHASED

**VERTICAL CONTROL**  
 BENCH MARK "H246" WITH ITS NAVD 88 ELEVATION WAS HELD FOR VERTICAL CONTROL. LEVEL CIRCUITS WERE RUN TO ESTABLISH ELEVATIONS ON CONTROL MONUMENTS.

**VERTICAL CONTROL EQUIPMENT**  
 A LEICA DNA10 DIGITAL LEVEL AND A LEICA GBNL4C ALUMINUM LEVEL ROD WAS USED TO COMPLETE THE LEVEL CIRCUITS. THIS INSTRUMENT HAS THE FOLLOWING STANDARD DEVIATION OF 1.5MM IN A 1 KILOMETER DOUBLE RUN LEVEL CIRCUIT.

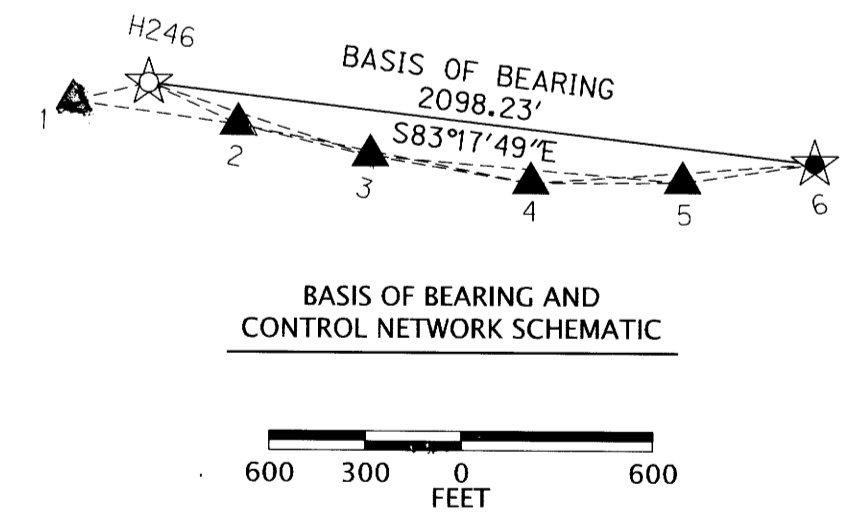
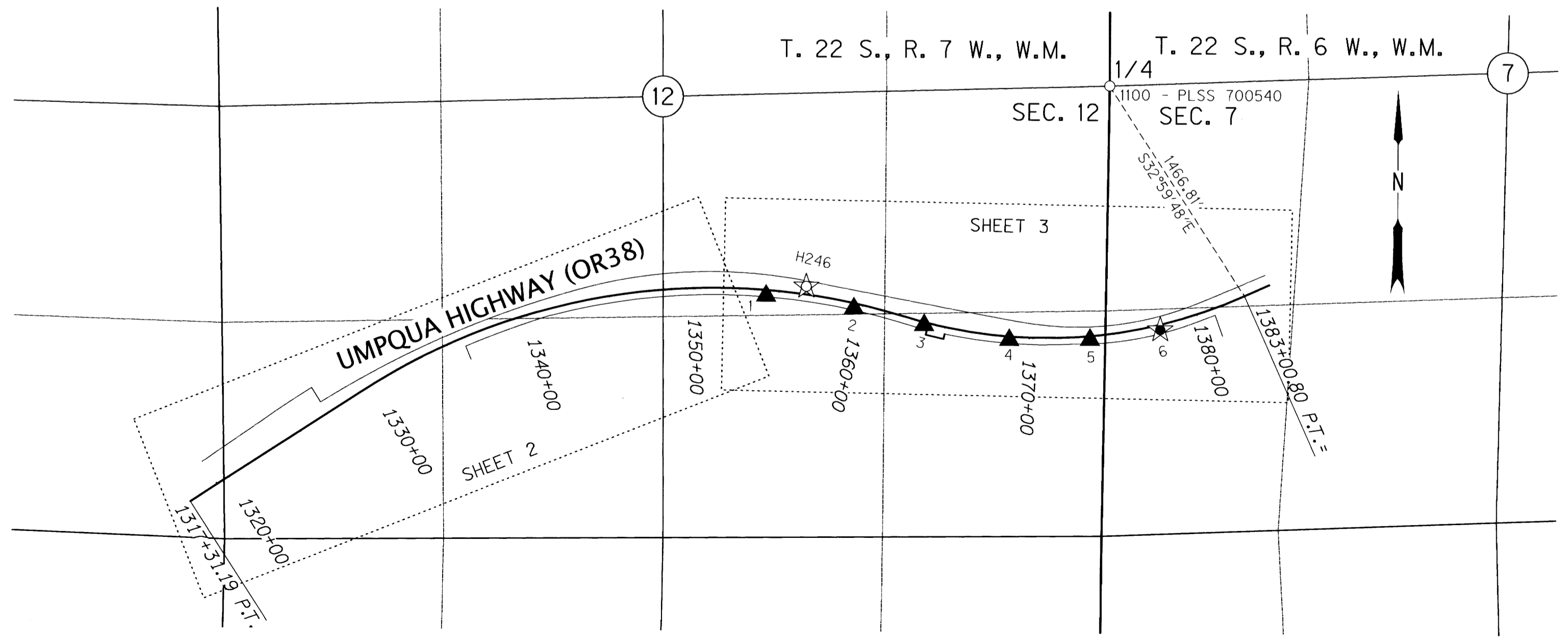
**RIGHT OF WAY RETRACEMENT**  
 THE RIGHT OF WAY FOR THIS PROJECT WAS RESOLVED USING DRG. NO. 1B-20-15. THE RECORD HIGHWAY CENTER LINE WHICH HAS NO DESIGNATOR WAS ROTATED INTO PLACE HOLDING THE RECORD OFFSET AND STATION FROM POINT 1004 AND ROTATING TO THE RECORD OFFSET FROM 1000. THE RECORD ABANDONED RAILROAD CENTER LINE WHICH WAS DESIGNATED "RR" WAS RESOLVED BY HOLDING THE RECORD RADIAL TIE FROM SAID DRG. FROM HIGHWAY CENTER LINE STATION 1317+31.3 P.T. TO THE RAILROAD CENTER LINE AND THE RECORD BEARINGS AND CURVE INFORMATION WERE RUN EASTERLY TO "RR" 473+34.53 P.C.C. BACK EQUALS "RR" 473+37.78 P.C.C. AHEAD. THE RECORD RADIAL TIE FROM SAID DRG. WAS HELD FROM HIGHWAY CENTER LINE STATION 1383+00.6 P.T. TO THE RAILROAD CENTER LINE AND THE RECORD BEARINGS AND CURVE INFORMATION WERE RUN WESTERLY TO "RR" 473+34.53 P.C.C. BACK EQUALS "RR" 473+37.78 P.C.C. AHEAD. THE RAILROAD CENTER LINE RUN EASTERLY AND WESTERLY FROM THE RADIAL TIES DIDN'T MATCH SO THE TANGENTS WERE INTERSECTED AT "RR" 474+57.60 P.I. AND THE DEGREE OF CURVE WAS ADJUSTED BETWEEN "RR" 459+28.22 P.S. AND "RR" 473+34.53 P.C.C. BACK EQUALS "RR" 473+37.78 P.C.C. AHEAD. THE RECORD ABANDONED RAILROAD CENTER LINE WAS ROTATED INTO PLACE HOLDING ITS GEOMETRIC RELATIONSHIP WITH THE HIGHWAY CENTER LINE. THE ABANDONED RAILROAD RIGHT OF WAY WAS TRANSFERRED FROM DOUGLAS COUNTY TO THE STATE OF OREGON IN THE 1930'S BECOMING PART OF THE CURRENT HIGHWAY RIGHT OF WAY. WHERE THE HIGHWAY AND ABANDONED RAILROAD RIGHT OF WAY LINES OVERLAP THE FARTHEST ONE OUT HOLDS.

**PLEASE NOTE:**  
 CONTROL MONUMENTS SHOWN ON THIS SURVEY DO NOT REPRESENT PROPERTY LINES OR RIGHT OF WAY LINES. THEY ARE INTENDED TO PERPETUATE THE ALIGNMENT AND RIGHT OF WAY DEVELOPED FOR THIS PROJECT IN CONFORMANCE WITH ORS 209, SECTION 155.

THE ORIGINAL FIELD NOTES HAVE BEEN SENT TO THE ODOT MAP AND PLAN CENTER IN SALEM, OREGON AND CAN BE FOUND IN FIELD BOOK 4756.

BOUNDARY LINE LEGEND	
	NEW HIGHWAY RIGHT OF WAY
	EXISTING HIGHWAY RIGHT OF WAY
	EXISTING HIGHWAY/ABANDONED RAILROAD RIGHT OF WAY
	EXISTING PROPERTY
	TOWNSHIP
	SECTION
	1/4 SECTION
	1/16 SECTION OR GOVERNMENT LOT

POINT LEGEND	
	FOUND 1/4 CORNER
	SET NETWORK POINT
	SET GPS STATION
	FOUND GPS STATION
	LINES OF OBSERVATION
SEE MONUMENT TABLE SHEET 3	



**OREGON DEPARTMENT OF TRANSPORTATION**  
 CONTROL, RECOVERY, RETRACEMENT & RIGHT-OF-WAY BOUNDARY MONUMENTATION MAP  
 OR38/US101: SMALL AND LARGE CULVERT UPGRADES  
 UMPQUA HIGHWAY NO. 45 M.P. 41.98 (GREEN CREEK)  
 DOUGLAS COUNTY  
 FILE: 19737RW.DGN :: RWM

ODOT REGION 3 TECH CENTER  
 3500 NW STEWART PKWY.  
 ROSEBURG, OR 97470 KEY No. 19737

AUGUST 20, 2019  
 SCALE: 1" = 600'  
 SHEET 1 OF 3

ST. HWY. 38-024 A

SE 1/4 SECTION 11 T22S R7W WM S 1/2 SECTION 12 T22S R7W WM

FILED

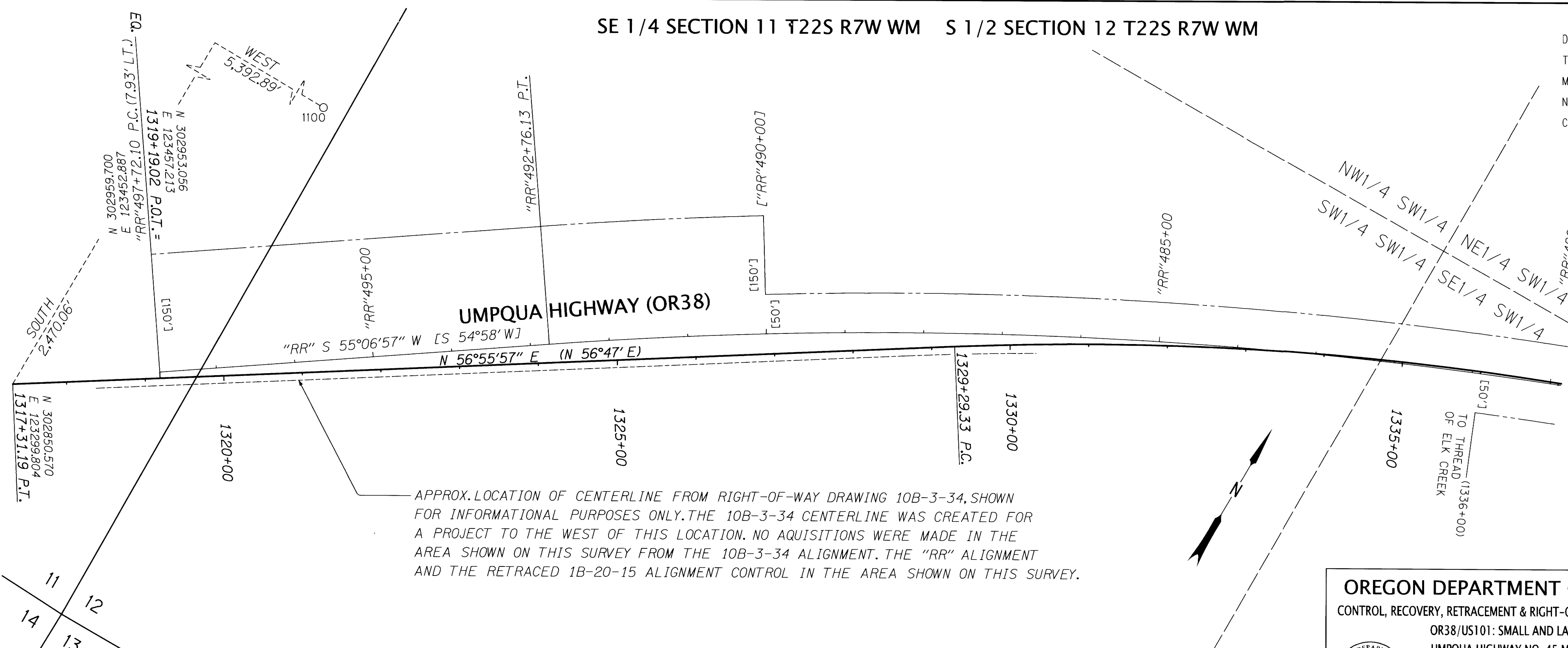
Date: 8-21-2019 By: Qi

This survey consist of:

Map: St. Hwy 38-024 A-C

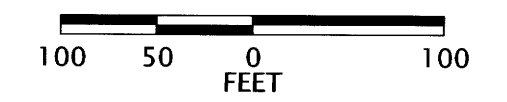
Narrative:

Corner Rpt:  
DOUGLAS COUNTY  
SURVEYOR




APPROX. LOCATION OF CENTERLINE FROM RIGHT-OF-WAY DRAWING 10B-3-34, SHOWN FOR INFORMATIONAL PURPOSES ONLY. THE 10B-3-34 CENTERLINE WAS CREATED FOR A PROJECT TO THE WEST OF THIS LOCATION. NO AQUISITIONS WERE MADE IN THE AREA SHOWN ON THIS SURVEY FROM THE 10B-3-34 ALIGNMENT. THE "RR" ALIGNMENT AND THE RETRACED 1B-20-15 ALIGNMENT CONTROL IN THE AREA SHOWN ON THIS SURVEY.

FOR LINE LEGEND  
SEE SHEET 1

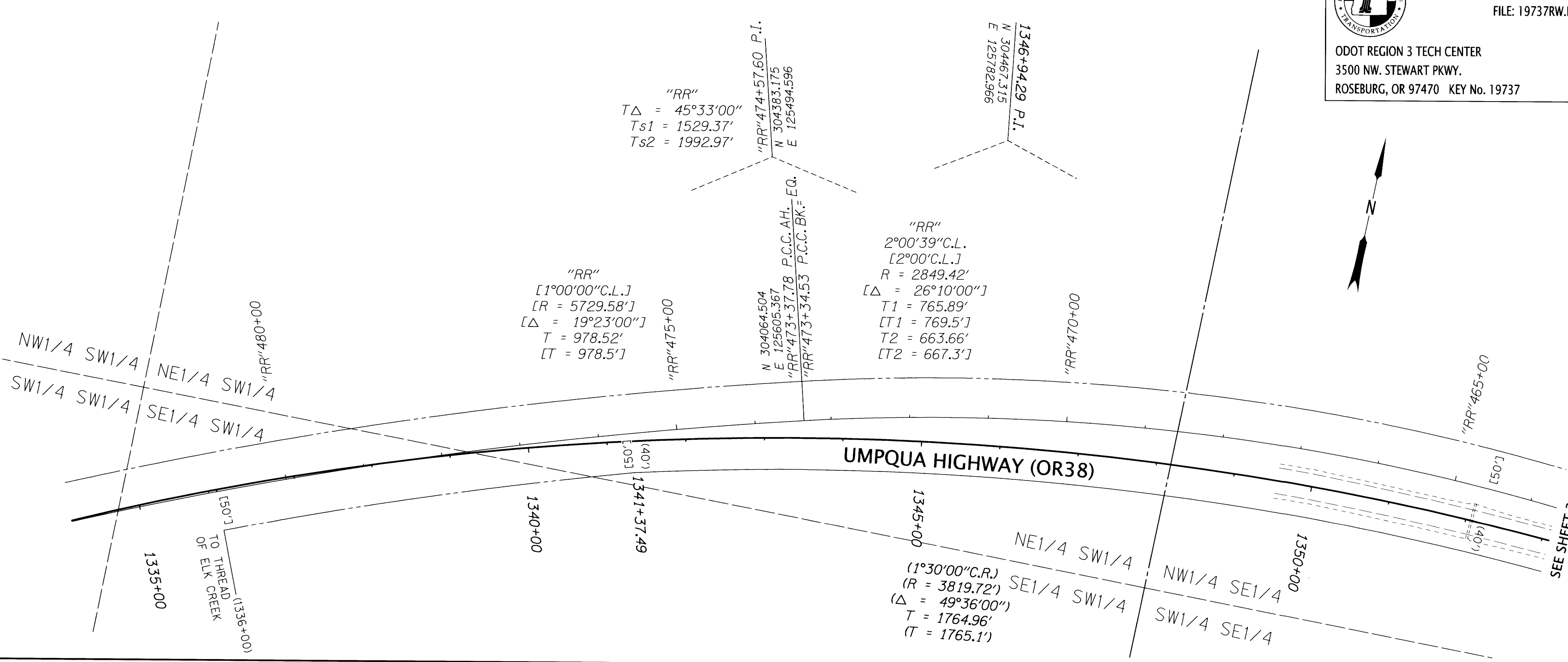


**OREGON DEPARTMENT OF TRANSPORTATION**  
CONTROL, RECOVERY, RETRACEMENT & RIGHT-OF-WAY BOUNDARY MONUMENTATION MAP  
OR38/US101: SMALL AND LARGE CULVERT UPGRADES  
UMPQUA HIGHWAY NO. 45 M.P. 41.98 (GREEN CREEK)  
DOUGLAS COUNTY  
FILE: 19737RW.DGN :: RWM



ODOT REGION 3 TECH CENTER  
3500 NW STEWART PKWY.  
ROSEBURG, OR 97470 KEY No. 19737

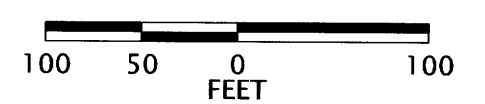
AUGUST 20, 2019  
SCALE: 1" = 100'  
SHEET 2 OF 3



RECORD DATA FROM DRG. 1B-20-15

( )	HIGHWAY CENTER LINE
[ ]	RR CENTER LINE
NO BRACKET	MEASURED/RESOLVED SUPERCEDES RECORD

FOR LINE LEGEND  
SEE SHEET 1



REGISTERED  
PROFESSIONAL  
LAND SURVEYOR

*Mickey D. Calvert*  
OREGON  
NOVEMBER 10, 2011  
MICKEY D. CALVERT  
75099

RENEWS: 12-31-2019

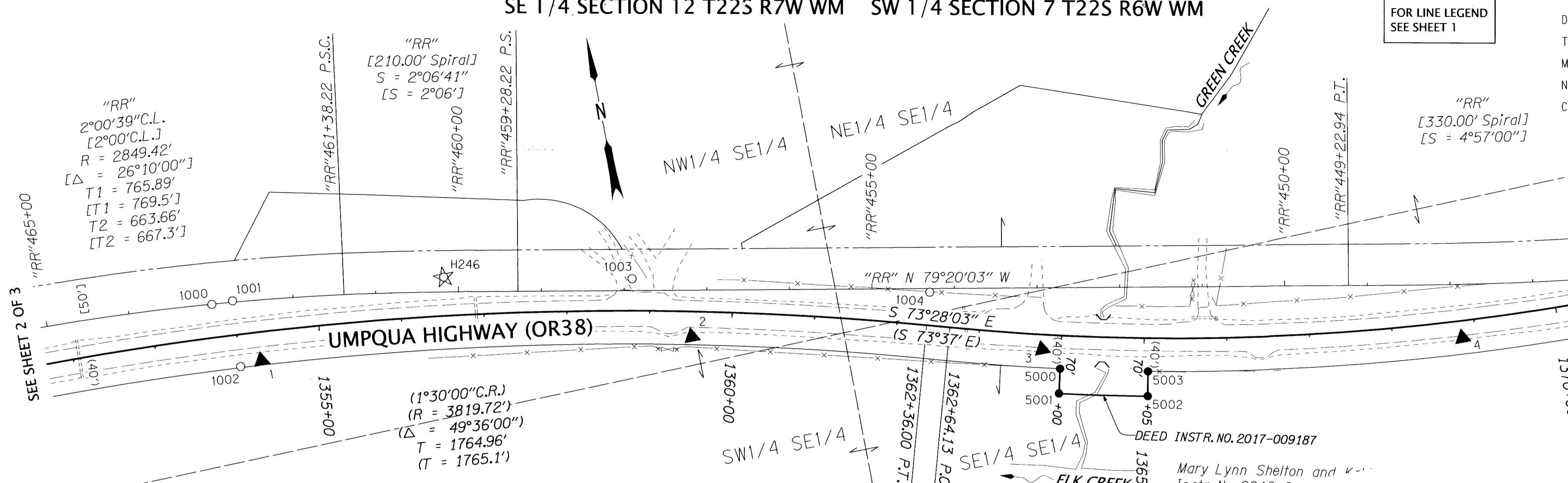
ST. HWY. 38-024 B

SE 1/4 SECTION 12 T22S R7W WM SW 1/4 SECTION 7 T22S R6W WM

FOR LINE LEGEND  
SEE SHEET 1

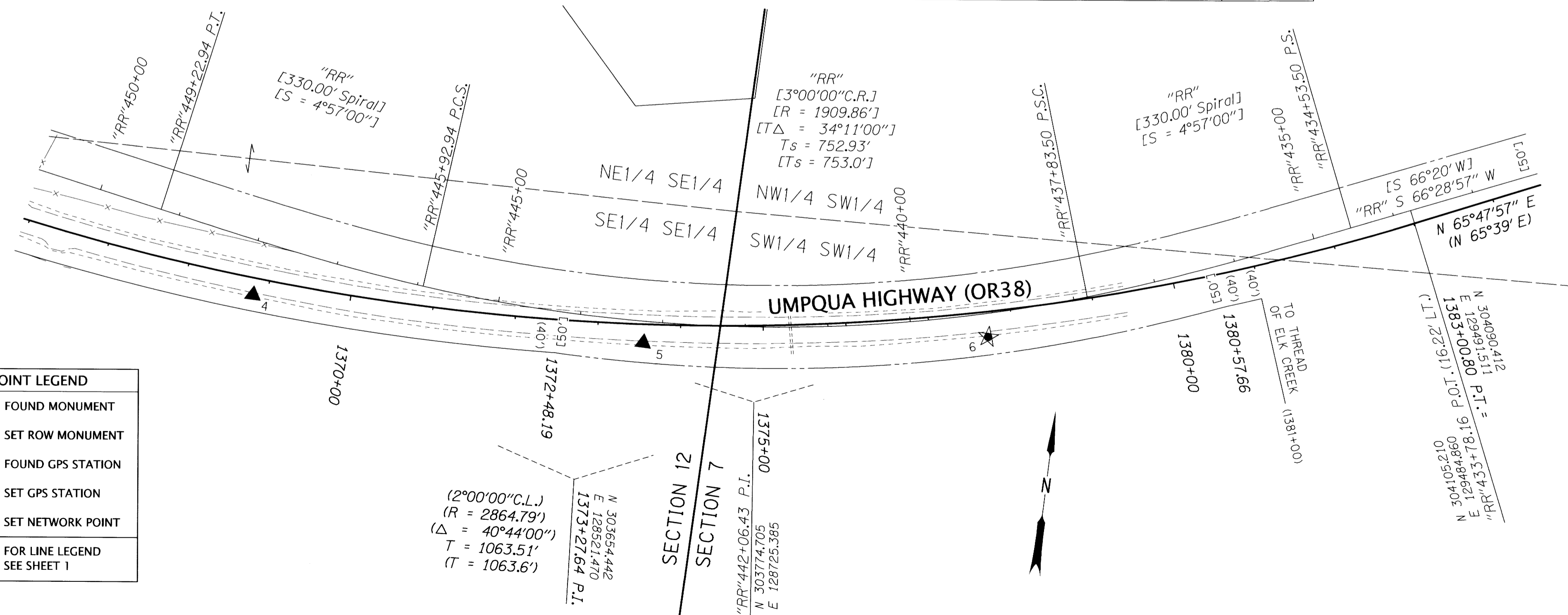
FILED  
Date: 8-21-2019 By: [Signature]  
This survey consist of:  
Map: St. Hwy 38-024 A-C  
Narrative:  
Corner Rpt: DOUGLAS COUNTY SURVEYOR

REGISTERED PROFESSIONAL LAND SURVEYOR  
[Signature]  
OREGON NOVEMBER 10, 2011  
MICKEY D. CALVERT 75099  
RENEWS: 12-31-2019  
FOR MONUMENT TABLE SEE SHEET 3



PT. NO.	OCRS NORTHING	OCRS EASTING	ELEVATION	STATION	OFFSET (- IS LEFT)	DATE	DESCRIPTION	REFERENCE
1	304077.331	126677.476	187.54	1354+26.22	34.58	3/4/2015	SET 5/8" X 30" IRON REBAR WITH 2" ALUMINUM CAP STAMPED "ODOT CONTROL 1"	
2	304005.891	127193.327	184.15	1359+51.87	30.54	3/4/2015	SET 5/8" X 30" IRON REBAR WITH 2" ALUMINUM CAP STAMPED "ODOT CONTROL 2"	
3	303909.720	127606.644	184.00	1363+77.32	17.85	3/4/2015	SET 5/8" X 30" IRON REBAR WITH 2" ALUMINUM CAP STAMPED "ODOT CONTROL 3"	
4	303825.645	128108.680	186.66	1368+83.61	20.53	3/4/2015	SET 5/8" X 30" IRON REBAR WITH 2" ALUMINUM CAP STAMPED "ODOT CONTROL 4"	
5	303828.555	128583.467	191.00	1373+55.41	22.39	3/4/2015	SET 5/8" X 30" IRON REBAR WITH 2" ALUMINUM CAP STAMPED "ODOT CONTROL 5"	
6	303889.013	128996.760	193.80	1377+69.56	30.52	3/4/2015	SET 5/8" X 30" IRON REBAR WITH 2" ALUMINUM CAP STAMPED "ODOT CONTROL 6"	
1000	304155.310	126631.405	-	1353+74.85	-40.00	3/5/2015	FOUND 3/4" X 3/4" T-POST. 0.6' ABOVE GROUND WITH NAIL IN TOP	M26-28
1001	304154.695	126656.945	-	1354+00.11	-41.08	3/5/2015	FOUND 1/2" IRON ROD. FLUSH WITH GROUND BENT SLIGHTLY SOUTHERLY TIED SPIN POINT	DRG. 1B-20-15
1002	304074.900	126651.251	-	1353+99.99	38.92	3/5/2015	FOUND 1/2" IRON ROD. FLUSH WITH GROUND BENT IN SEVERAL DIRECTIONS TIED SPIN POINT	DRG. 1B-20-15
1003	304088.522	127135.805	-	1358+78.83	-38.69	3/5/2015	FOUND 3/4" X 3/4" T-POST. 0.3' BELOW GRADE	M26-28
1004	304003.426	127486.340	-	1362+36.00	-40.00	3/10/2015	FOUND 1/2" IRON ROD FLUSH WITH GROUND	DRG. 1B-20-15
1100	305320.632	128692.697	-	-	-	3/25/2016	FOUND 3/4" X 3/4" T IRON WITH 1" DIAMETER BRASS CAP STAMPED "WILFORD N. HANES 239 SURVEY POINT DRAIN, OR." 1.0' ABOVE GROUND GOOD CONDITION (SHOWN ON SHEET 1 & 2) ONE-QUARTER CORNER S12 / S7 PLSS 700540	M3-22
5000	303882.671	127623.494	-	1364+00.00	40.00	8/12/2019	SET 5/8" X 30" IRON REBAR WITH 2" ALUMINUM CAP STAMPED "ODOT RIGHT OF WAY 5000"	DRG. 11B-8-21
5001	303853.539	127616.330	-	1364+00.00	70.00	8/12/2019	SET 5/8" X 30" IRON REBAR WITH 2" ALUMINUM CAP STAMPED "ODOT RIGHT OF WAY 5001"	DRG. 11B-8-21
5002	303829.773	127721.231	-	1365+05.00	70.00	8/12/2019	SET 5/8" X 30" IRON REBAR WITH 2" ALUMINUM CAP STAMPED "ODOT RIGHT OF WAY 5002"	DRG. 11B-8-21
5003	303859.148	127727.323	-	1365+05.00	40.00	8/12/2019	SET 5/8" X 30" IRON REBAR WITH 2" ALUMINUM CAP STAMPED "ODOT RIGHT OF WAY 5003"	DRG. 11B-8-21
H246	304133.927	126912.871	189.84	1356+53.95	-46.72	3/4/2015	FD. 3" DISK IN CONCRETE STAMPED "US COAST & GEODETIC SURVEY, H246, ELEV 186 FEET, 1934"	NGS

OREGON DEPARTMENT OF TRANSPORTATION  
CONTROL, RECOVERY, RETRACEMENT & RIGHT-OF-WAY BOUNDARY MONUMENTATION MAP  
OR38/US101: SMALL AND LARGE CULVERT UPGRADES  
UMPUQA HIGHWAY NO. 45 M.P. 41.98 (GREEN CREEK)  
DOUGLAS COUNTY  
FILE: 19737RW.DGN :: RWM  
AUGUST 20, 2019  
SCALE: 1" = 100'  
SHEET 3 OF 3



POINT LEGEND  
○ FOUND MONUMENT  
● SET ROW MONUMENT  
☆ FOUND GPS STATION  
★ SET GPS STATION  
▲ SET NETWORK POINT  
FOR LINE LEGEND SEE SHEET 1

FOR LINE LEGEND SEE SHEET 1  
FOR MONUMENT TABLE SEE SHEET 3  
RECORD DATA FROM DRG. 1B-20-15  
( ) HIGHWAY CENTER LINE  
[ ] RR CENTER LINE  
NO MEASURED/RESOLVED  
BRACKET SUPERCEDES RECORD

ST. HWY. 38-024 C