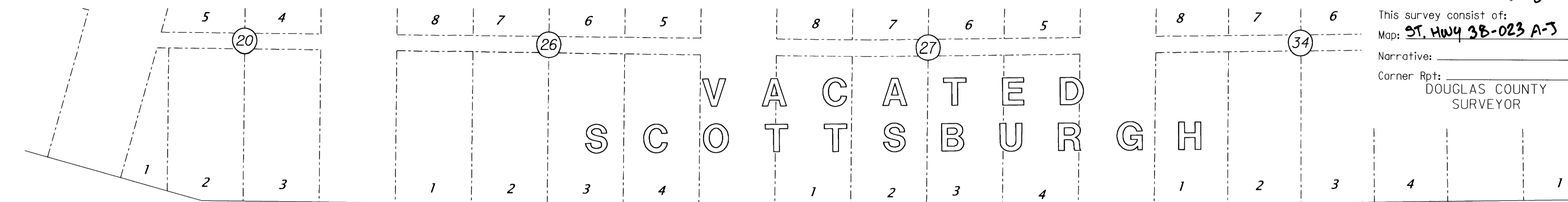


FILED
 Date: 11-7-2018 By: *RS*
 This survey consist of:
 Map: ST. HWY 38-023 A-3
 Narrative:
 Corner Rpt:
 DOUGLAS COUNTY
 SURVEYOR



VACATED
 SCOTTSBURGH

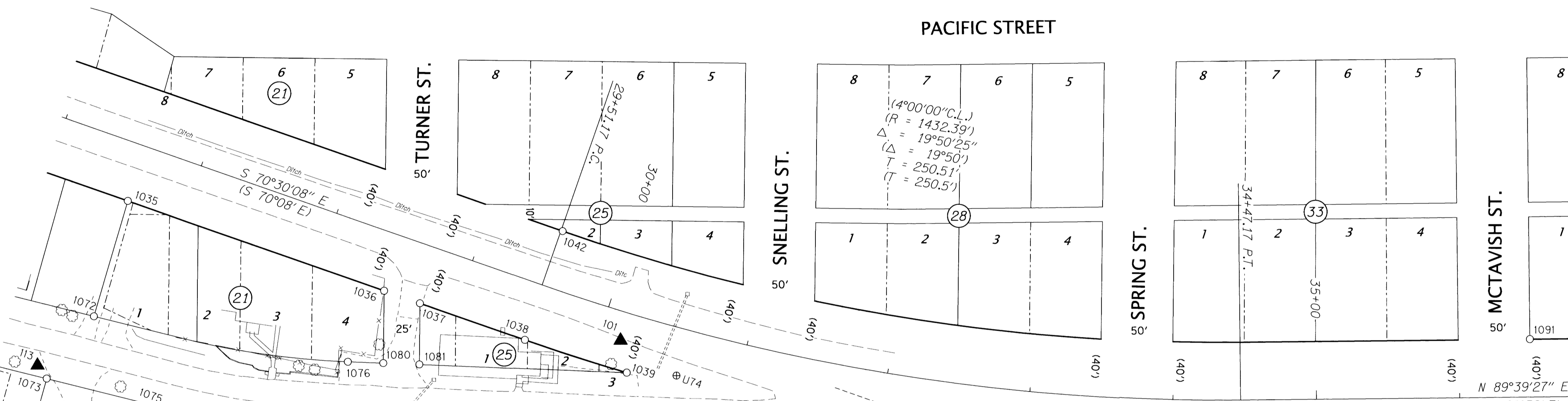
PACIFIC STREET

TURNER ST.
 50'

SNELLING ST.
 50'

SPRING ST.
 50'

MCTAVISH ST.
 50'

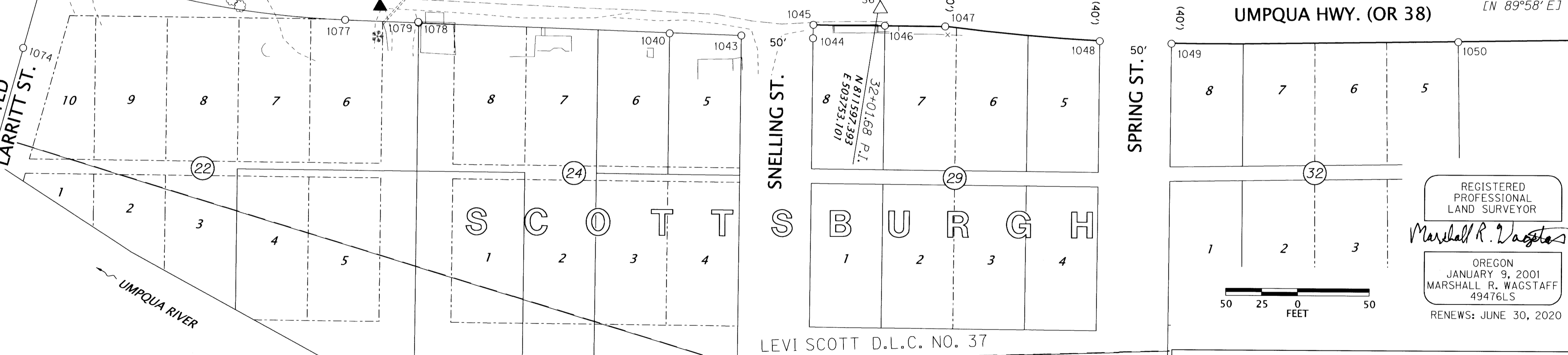


UMPQUA HWY. (OR 38)

VACATED
 LARRITT ST.

SNELLING ST.
 50'

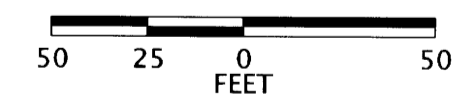
SPRING ST.
 50'



LEVI SCOTT D.L.C. NO. 37

SCOTTSBURGH

REGISTERED
 PROFESSIONAL
 LAND SURVEYOR
Marshall R. Wagstaff
 OREGON
 JANUARY 9, 2001
 MARSHALL R. WAGSTAFF
 49476LS
 RENEWS: JUNE 30, 2020



POINT LEGEND	
○	FOUND MONUMENT
△	FOUND NETWORK POINT
▲	SET NETWORK POINT
⊕	FOUND BENCH MARK
FOR LINE LEGEND SEE SHEET 2 SEE SHEET 8 FOR MONUMENT TABLE	

RECORD DATA	
()	ODOT DRG. 2C-1-16
(())	ODOT DRG. 4B-21-24 & DEED 95-236
[]	ODOT DRG. 2B-24-20
NO BRACKET	MEASURED/RESOLVED SUPERCEDES RECORD

OREGON DEPARTMENT OF TRANSPORTATION
 HORIZONTAL CONTROL, RECOVERY AND RETRACEMENT MAP
 OR38: UMPQUA RIVER (SCOTTSBURG) BRIDGE REPLACEMENT
 UMPQUA HIGHWAY MP. 15.9 - 17.1
 DOUGLAS COUNTY
 FILE: S_K18578_CRR_01.DGN :: CRR

FOR ODOT REGION 3
 3500 NW STEWART PKWY.
 ROSEBURG, OR. 97470



NOVEMBER 2, 2018
 SCALE: 1" = 50'
 SHEET 9 OF 10