

SW1/4 SEC. 18, T. 22 S., R. 9 W., W.M.

FILED

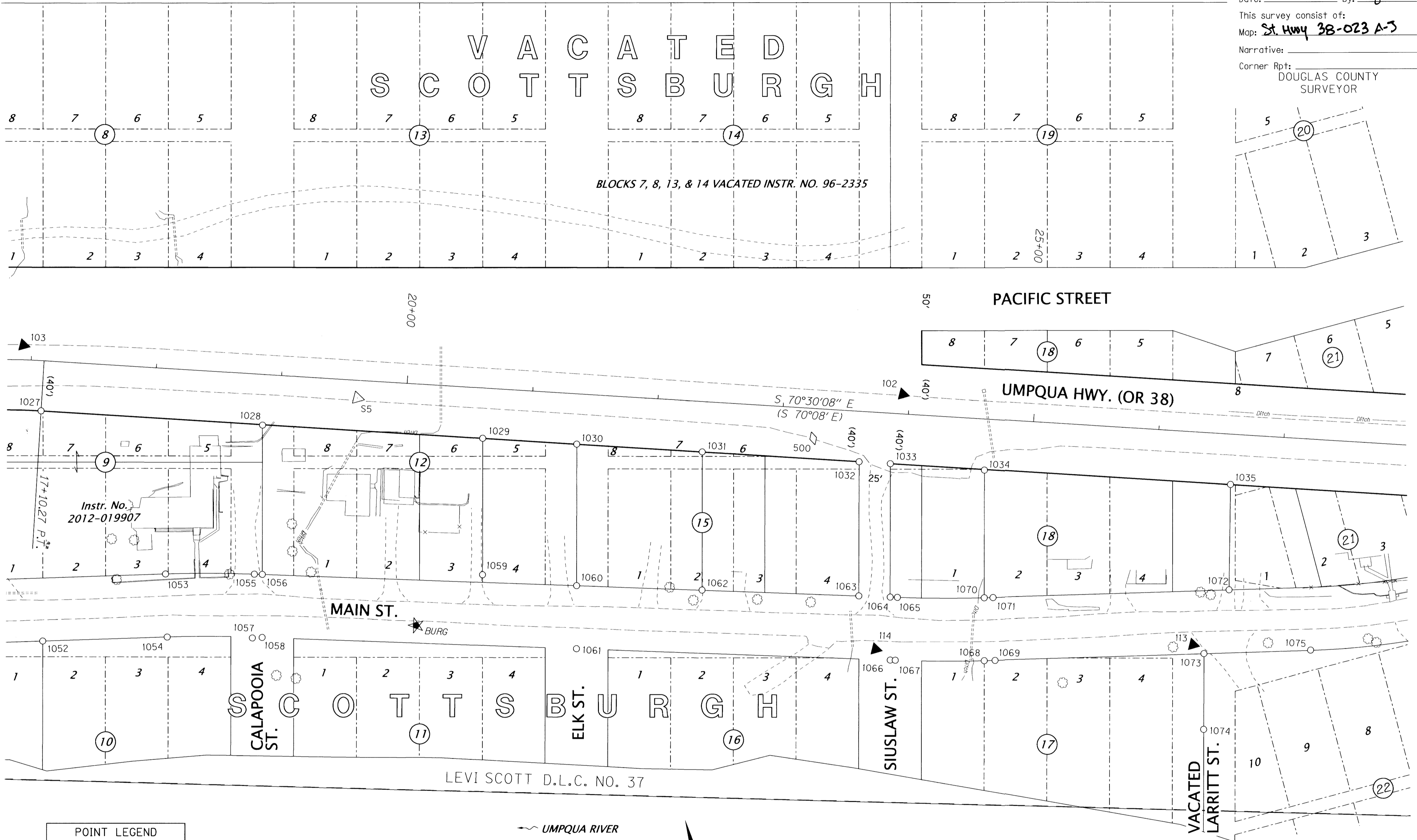
Date: 11-7-2018 By: *gk*

This survey consist of:

Map: *St. Hwy 38-023 A-3*

Narrative:

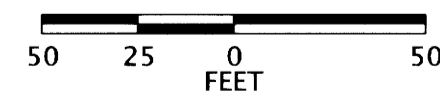
Corner Rpt: DOUGLAS COUNTY SURVEYOR



POINT LEGEND	
○	FOUND MONUMENT
★	SET GPS STATION
△	FOUND NETWORK POINT
▲	SET NETWORK POINT
◇	FOUND STRATEGIC POINT
FOR LINE LEGEND SEE SHEET 2 SEE SHEET 8 FOR MONUMENT TABLE	

RECORD DATA	
()	ODOT DRG. 2C-1-16
(())	ODOT DRG. 4B-21-24 & DEED 95-236
[]	ODOT DRG. 2B-24-20
NO BRACKET	MEASURED/RESOLVED SUPERCEDES RECORD

UMPQUA RIVER



REGISTERED PROFESSIONAL LAND SURVEYOR

Marshall R. Wagstaff

OREGON
JANUARY 9, 2001
MARSHALL R. WAGSTAFF
49476LS

RENEWS: JUNE 30, 2020

OREGON DEPARTMENT OF TRANSPORTATION

HORIZONTAL CONTROL, RECOVERY AND RETRACEMENT MAP
OR38: UMPQUA RIVER (SCOTTSBURG) BRIDGE REPLACEMENT
UMPQUA HIGHWAY MP. 15.9 - 17.1

DOUGLAS COUNTY

FILE: S_K18578_CRR_01.DGN :: CRR

FOR ODOT REGION 3
3500 NW STEWART PKWY.
ROSEBURG, OR. 97470



NOVEMBER 2, 2018
SCALE: 1" = 50'
SHEET 7 OF 10

ST. HWY. 38-023 G