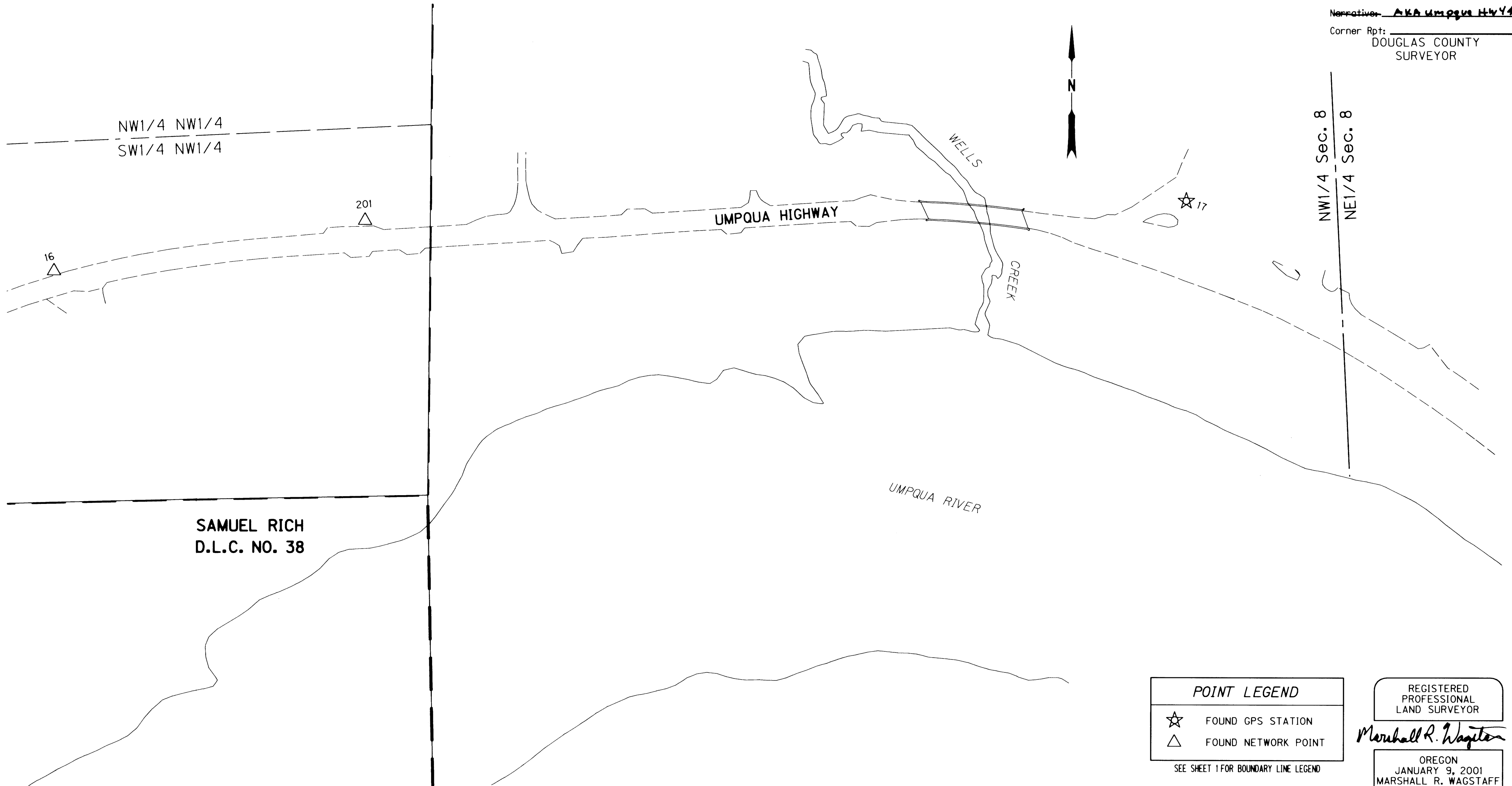


SEC. 8, T. 22 S, R. 9 W, W.M.

FILED

Date: 9-10-2014 By: JC
 This survey consist of:
 Map: ST HWY 38-021 A-F
 Narrative: AKA Umpqua Hwy 45
 Corner Rpt: _____
 DOUGLAS COUNTY
 SURVEYOR



POINT LEGEND

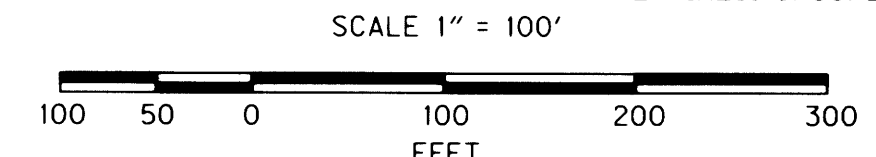
- ☆ FOUND GPS STATION
- △ FOUND NETWORK POINT

SEE SHEET I FOR BOUNDARY LINE LEGEND

REGISTERED
 PROFESSIONAL
 LAND SURVEYOR

Marshall R. Wagstaff

OREGON
 JANUARY 9, 2001
 MARSHALL R. WAGSTAFF
 49476
 EXPIRES: 6/30/2016



ODOT OREGON DEPARTMENT OF TRANSPORTATION

HORIZONTAL CONTROL, RECOVERY, RETRACEMENT AND
 RIGHT OF WAY BOUNDARY MONUMENTATION MAP
 OR38: SCOTTSBURG - WELLS CREEK CURVE REALIGNMENT
 UMPQUA HWY. NO. 45 M.P. 17.1 TO 19.1
 DOUGLAS COUNTY
 FILE: 16207RW.DGN

FOR ODOT REGION 3 SEPTEMBER 9, 2014
 3500 NW. STEWART PKWY. SCALE: 1" = 100'
 ROSEBURG, OR. 97470 SHEET 6 OF 6

CONTROL MONUMENTS

PT. NO.	NORTHING	EASTING	ELEV.	STATION	OFFSET (- IS LT.)	DATE	DESCRIPTION	REFERENCE
16	819319.893	507455.415	65.21			7/12/11	FD. 1 1/2" ALUM. CAP STAMPED "OREGON STATE HWY. DIV. PT <16" 0.40 FT. BELOW SURFACE GOOD CONDITION. CARSONITE POST FOUND NEARBY.	ST. HWY. 38-009
17	819426.111	509139.000				7/12/11	FD. RAIL ROAD SPIKE IN A.C. PARKING OF MARKET STAMPED "17".	ST. HWY. 38-009
201	819395.839	507917.783				7/12/11	FD. 1 1/2" BRASS CAP STAMPED " ODOT CONTROL 201" FLUSH WITH SURFACE GOOD CONDITION. CARSONITE POST NEARBY.	ST. HWY. 38-009

(AKA UMPQUA HWY 45)

ST. HWY. 38-021 F