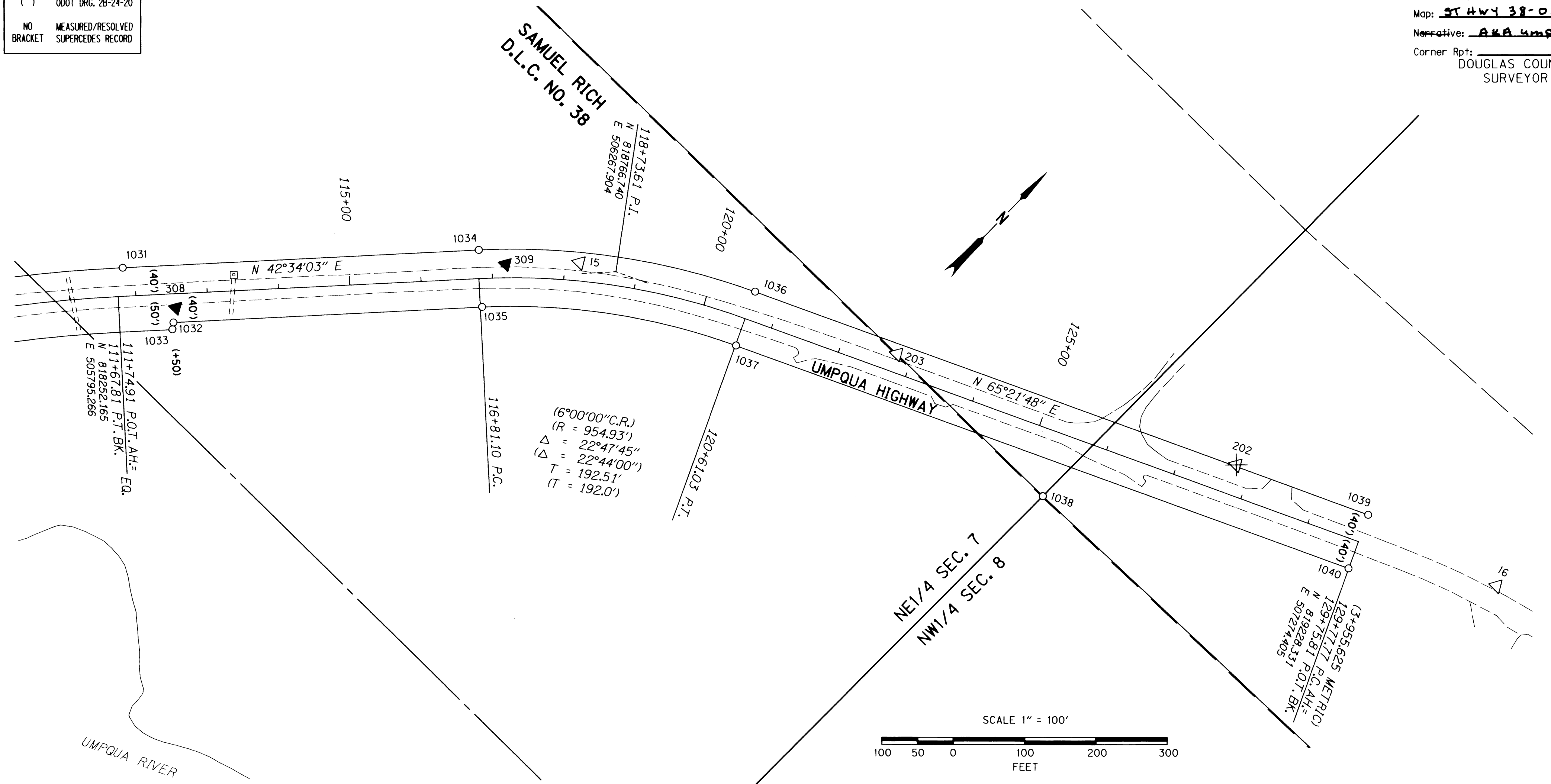


SEC. 7, 8, T. 22 S, R. 9 W, W.M.

FILED

Date: 9-10-2014 By: JC
 This survey consist of:
 Map: ST HWY 38-021 A-F
 Narrative: AKA Umpqua Hwy 45
 Corner Rpt: _____
 DOUGLAS COUNTY
 SURVEYOR

RECORD DATA	
()	ODOT DRG. 2B-24-20
NO	MEASURED/RESOLVED
BRACKET	SUPERCEDES RECORD



CONTROL MONUMENTS

PT. NO.	NORTHING	EASTING	ELEV.	STATION	OFFSET (- IS LT.)	DATE	DESCRIPTION	REFERENCE
15	818740.013	506222.428		118+19.92	-25.76	7/12/11	FD. 1 1/2" ALUM. CAP STAMPED "OREGON STATE HWY. DIV. < PT 15" 0.10 FT. ABOVE SURFACE GOOD CONDITION. CARSONITE POST FOUND NEARBY.	ST. HWY. 38-009
16	819319.893	507455.415	65.21			7/12/11	FD. 1 1/2" ALUM. CAP STAMPED "OREGON STATE HWY. DIV. < PT 16" 0.40 FT. BELOW SURFACE GOOD CONDITION. CARSONITE POST FOUND NEARBY.	ST. HWY. 38-009
202	819184.298	507076.972	72.68	127+78.00	-42.28	12/17/13	DESTROYED 1 1/2" BRASS CAP STAMPED " ODOT CONTROL 202" FUSH IN CONCRETE. CORSONITE POST NEARBY.	ST. HWY. 38-009
203	818961.107	506629.309	87.29	122+78.05	-26.02	7/12/11	FD. 5/8" IRON REBAR WITH 1 1/2" BRASS CAP STAMPED "ODOT CONTROL 203". CORSONITE POST NEARBY.	ST. HWY. 38-009
308	818298.090	505864.105	107.51	112+55.30	19.63	7/12/11	SET 5/8" x 30" IRON REBAR WITH A 1 1/2" BRASS CAP STAMPED "ODOT CONTROL 308" CARSONITE POST SET NEARBY.	
309	818665.685	506150.393	107.07	117+18.95	-18.95	7/12/11	SET 5/8" x 30" IRON REBAR WITH A 1 1/2" BRASS CAP STAMPED "ODOT CONTROL 309" CARSONITE POST SET NEARBY.	

RECOVERED MONUMENTS

PT. NO.	NORTHING	EASTING	STATION	OFFSET (- IS LT.)	DATE	DESCRIPTION	REFERENCE
1031	818285.516	505771.586	111+83.46	-40.00	7/20/11	FD. 5/8" IRON ROD ERODED BADLY LEANING SLIGHTLY TIED WHERE ROD ENTERS GROUND, 0.6 FT ABOVE SURFACE POOR CONDITION WHITE CARSONITE POST NEARBY	DRG 2B-24-20
1032	818280.899	505876.081	112+50.74	40.08	7/20/11	FD. 5/8" IRON ROD 0.2 FT ABOVE SURFACE GOOD CONDITION WHITE CARSONITE POST NEARBY	DRG 2B-24-20
1033	818272.981	505881.802	112+48.78	49.65	7/20/11	FD. 5/8" IRON REBAR BENT BADLY TIED WHERE ROD ENTERS GROUND, 0.6 FT ABOVE SURFACE POOR CONDITION	DRG 2B-24-20
1034	818653.335	506109.521	116+82.87	-39.93	7/20/11	FD. 5/8" IRON REBAR 0.1 FT BELOW SURFACE GOOD CONDITION 4X4 WOOD POST NEARBY MARKED RW.	DRG 2B-24-20
1035	818599.781	506168.771	116+83.70	39.93	7/20/11	FD. 5/8" IRON ROD LEANING SLIGHTLY TIED WHERE ROD ENTERS GROUND, 0.6 FT ABOVE SURFACE POOR CONDITION WHITE CARSONITE POST NEARBY	DRG 2B-24-20
1036	818883.540	506426.549	120+61.41	-40.03	7/20/11	FD. 5/8" IRON ROD LEANING SLIGHTLY TIED WHERE ROD ENTERS GROUND, 0.2 FT ABOVE SURFACE FAIR CONDITION WHITE CARSONITE POST NEARBY	DRG 2B-24-20
1037	818811.104	506460.262	120+61.86	39.86	7/20/11	FD. 5/8" IRON ROD BENT BADLY TIED WHERE ROD ENTERS GROUND 0.1 FT ABOVE SURFACE POOR CONDITION WHITE CARSONITE POST NEARBY	DRG 2B-24-20
1038	818962.999	506914.428	125+38.00	91.12	7/20/11	FD. 2 1/2" IRON PIPE WITH 3 1/4" BRASS DISK STAMPED "US DEPARTMENT OF INTERIOR BUREAU OF LAND MANAGEMENT 1970 CADASTRAL SURVEY T22S R9W S7 S8 C38" 0.7 FT ABOVE SURFACE GOOD CONDITION	VOL. 36 PG. 14906
1039	819264.571	507257.534	129+75.59	-39.97	7/20/11	FD. 5/8" IRON ROD BENT SLIGHTLY TIED WHERE ROD ENTERS GROUND, 0.5 FT BELOW SURFACE POOR CONDITION	DRG 2B-24-20
1040	819191.729	507290.743	129+75.41	40.08	7/20/11	FD. 5/8" IRON ROD 0.1 FT BELOW SURFACE GOOD CONDITION	DRG 2B-24-20

POINT LEGEND	
▲	SET NETWORK POINT
△	FOUND NETWORK POINT
⊗	DESTROYED NETWORK POINT
○	FOUND MONUMENT

SEE SHEET 1 FOR BOUNDARY LINE LEGEND

REGISTERED
PROFESSIONAL
LAND SURVEYOR

Marshall R. Wagstaff

OREGON
JANUARY 9, 2001
MARSHALL R. WAGSTAFF
49476

EXPIRES: 6/30/2016

OREGON DEPARTMENT OF TRANSPORTATION
 HORIZONTAL CONTROL, RECOVERY, RETRACEMENT AND
 RIGHT OF WAY BOUNDARY MONUMENTATION MAP
 OR38: SCOTTSBURG - WELLS CREEK CURVE REALIGNMENT
 UMPQUA HWY. NO. 45 M.P. 17.1 TO 19.1
 DOUGLAS COUNTY
 FILE: 16207RW.DGN

FOR ODOT REGION 3
 3500 NW. STEWART PKWY.
 ROSEBURG, OR. 97470

SEPTEMBER 9, 2014
 SCALE: 1" = 100'
 SHEET 5 OF 6

(AKA UMPQUA HWY 45)

ST. HWY. 38-021 E