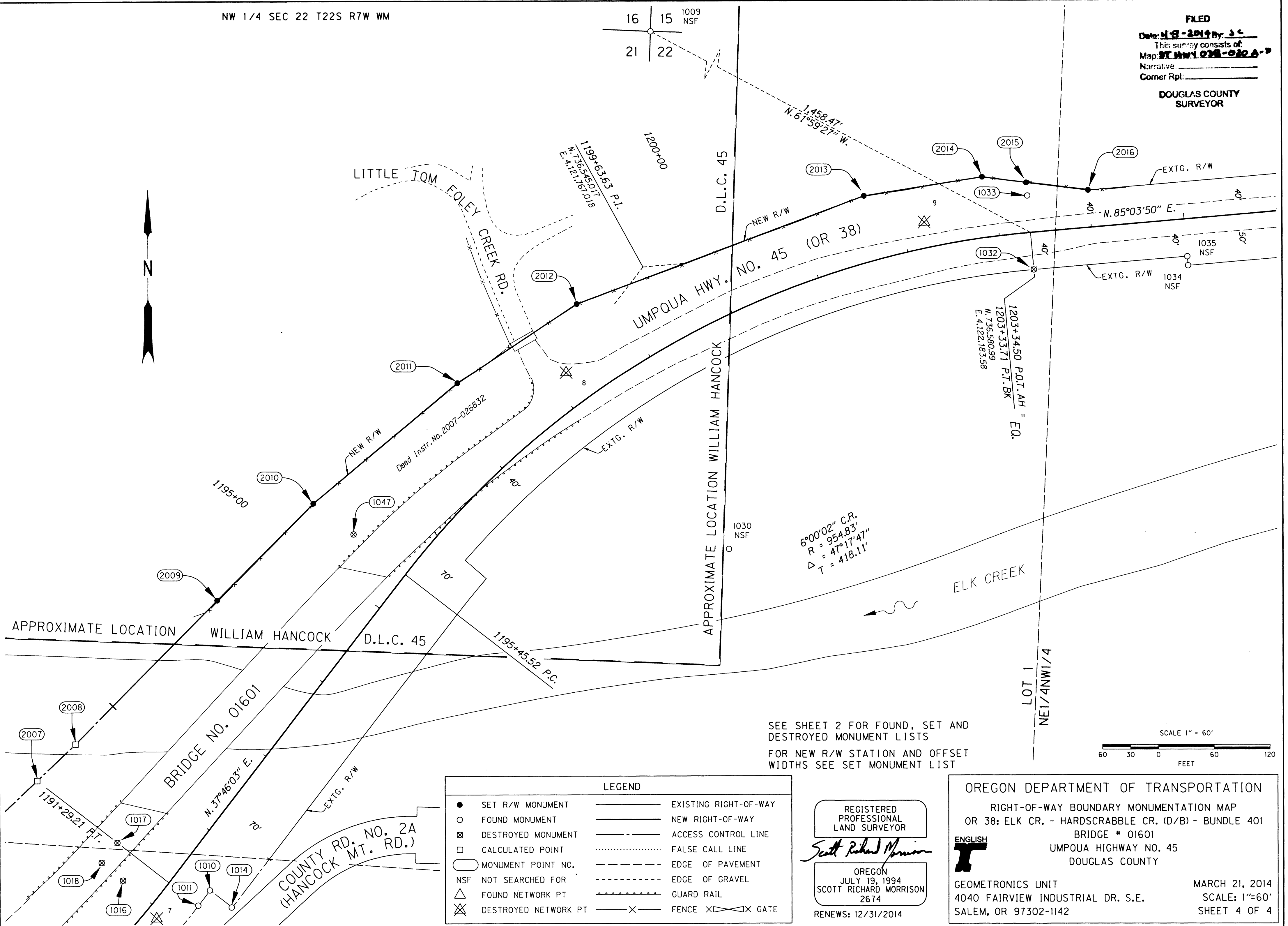


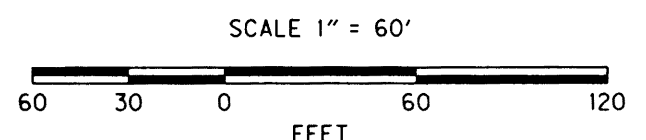
FILED
Date: 4-8-2014 by: J.C.
This survey consists of:
Map: ST. HWY. 038-020 A-D
Narrative: _____
Corner Rpt: _____
DOUGLAS COUNTY SURVEYOR



6°00'02" C.R.
R = 954.83'
Δ = 47°17'47"
T = 418.11'

1203+34.50 P.O.T. AH = EQ.
1203+33.71 P.I. BK
N: 736,580.99
E: 4,122,183.58

SEE SHEET 2 FOR FOUND, SET AND DESTROYED MONUMENT LISTS
FOR NEW R/W STATION AND OFFSET WIDTHS SEE SET MONUMENT LIST



LEGEND			
●	SET R/W MONUMENT	—	EXISTING RIGHT-OF-WAY
○	FOUND MONUMENT	—	NEW RIGHT-OF-WAY
⊗	DESTROYED MONUMENT	- - -	ACCESS CONTROL LINE
□	CALCULATED POINT	⋯	FALSE CALL LINE
○	MONUMENT POINT NO.	- - -	EDGE OF PAVEMENT
NSF	NOT SEARCHED FOR	- - -	EDGE OF GRAVEL
△	FOUND NETWORK PT	—	GUARD RAIL
⊗	DESTROYED NETWORK PT	— X —	FENCE
		⊗ X ⊗	GATE

REGISTERED PROFESSIONAL LAND SURVEYOR
Scott Richard Morrison
OREGON
JULY 19, 1994
SCOTT RICHARD MORRISON
2674
RENEWS: 12/31/2014

OREGON DEPARTMENT OF TRANSPORTATION
RIGHT-OF-WAY BOUNDARY MONUMENTATION MAP
OR 38: ELK CR. - HARDSCRABBLE CR. (D/B) - BUNDLE 401
BRIDGE # 01601
UMPQUA HIGHWAY NO. 45
DOUGLAS COUNTY
ENGLISH
GEOMETRONICS UNIT
4040 FAIRVIEW INDUSTRIAL DR. S.E.
SALEM, OR 97302-1142
MARCH 21, 2014
SCALE: 1"=60'
SHEET 4 OF 4