

NARRATIVE

THE PURPOSE OF THIS SURVEY IS TO MONUMENT THE CENTER LINE AND NEW RIGHT-OF-WAY ACQUIRED FOR THE CONSTRUCTION OF THE OR 38: ELK CR. - HARDSCRABBLE CR. (D/B) - BUNDLE 401 PROJECT, BRIDGE #01601. MAJOR CONSTRUCTION FOR THIS PROJECT OCCURRED BETWEEN JANUARY, 2008 AND APRIL, 2009. PROJECT DEVELOPMENT AND CONSTRUCTION FOR BUNDLE 401 WAS MANAGED BY THE OREGON BRIDGE DELIVERY PARTNERS (O.B.D.P.) UNDER PRIVATE CONTRACT. THE OREGON DEPARTMENT OF TRANSPORTATION, GEOMETRONICS UNIT WAS REQUESTED BY O.B.D.P. TO MONUMENT THIS PROJECT WHEN IT WAS DISCOVERED UPON PROJECT CLOSE-OUT THAT THE MONUMENTATION PHASE WAS OVERLOOKED. THIS SURVEY PERPETUATES THE ALIGNMENT AND RIGHT-OF-WAY DEVELOPED FOR THE PROJECT IN CONFORMANCE WITH ORS CHAPTER 209, SECTION 155. THE PROJECT IS LOCATED ON THE UMPQUA HIGHWAY NO. 45 (OR38) BETWEEN ELKTON, OREGON AND THE ELK CREEK TUNNEL IN THE NE 1/4 OF SECTION 21 AND THE NW 1/4 OF SECTION 22, TOWNSHIP 22 SOUTH, RANGE 7 WEST, WILLAMETTE MERIDIAN. THE NEW RIGHT-OF-WAY ACQUIRED FOR THIS PROJECT IS SHOWN ON ODOT DRAWING 11B-1-4, DATED JANUARY, 2007.

REFERENCE DOCUMENTS USED: ODOT DRAWING 11B-1-4 AND DOUGLAS COUNTY SURVEY MAP ST HWY 38-017 A-1.

DEED REFERENCES USED: INSTRUMENT NO. 2007-022300 (PARCEL 1) AND INSTRUMENT NO. 2007-026832 (PARCEL 1).

THE MONUMENTATION SURVEY BEGINS AT HIGHWAY ENGINEER'S STATION 1180+00.00 AND ENDS AT HIGHWAY ENGINEER'S STATION 1204+00.00 ON THE UMPQUA HIGHWAY. THE ALIGNMENT USED TO PURCHASE AND DEFINE THE NEW RIGHT-OF-WAY IS THE RECORD RESOLVED RIGHT-OF-WAY CENTER LINE AS SHOWN ON THE HORIZONTAL CONTROL, RECOVERY AND RETRACEMENT SURVEY DONE BY OTAK FOR THE OREGON DEPARTMENT OF TRANSPORTATION AND FILED JANUARY 15, 2009 AS DOUGLAS COUNTY SURVEY MAP ST HWY 38-017 A-1.

FIELD WORK FOR THIS SURVEY WAS CONDUCTED BY ODOT SURVEY CREWS ON SEPTEMBER 18, 2013, FEBRUARY 24, 2014 AND FEBRUARY 25, 2014. NETWORK CONTROL POINTS SET FOR THE CONSTRUCTION PROJECT IN THE VICINITY OF THE NEWLY ACQUIRED RIGHT-OF-WAY WERE SEARCHED FOR AND VERIFIED FOR POSITION. NETWORK POINTS NUMBERED 1, 2 AND 3 WERE FOUND IN GOOD CONDITION. POINT 4 WAS MISSING THE RED PLASTIC CAP CALLED FOR IN THE HORIZONTAL CONTROL, RETRACEMENT AND RECOVERY SURVEY. POINTS 5, 6, 7, 8, 9 AND 10 WERE SEARCHED FOR BUT NOT FOUND AND PRESUMED DESTROYED BY CONSTRUCTION. POINTS 13, 14 AND 15 WERE FOUND ON PRIVATE PROPERTY AND VERIFIED FOR POSITION, BUT NOT USED FOR THIS SURVEY. ALSO RECOVERED AND VERIFIED FOR POSITION WAS DOUGLAS COUNTY SURVEY MONUMENT "HANCOCK" (POINT NUMBER 1006).

THE NEW RIGHT-OF-WAY LOCATIONS WERE ESTABLISHED UTILIZING STATION AND OFFSET CALLS TO THE NEW LINE RELATIVE TO THE RECORD RESOLVED RIGHT-OF-WAY CENTER LINE CALLED FOR IN THE ACQUISITION DEEDS. LOCATIONS WERE ALSO ESTABLISHED ON THE NEW RIGHT-OF-WAY OPPOSITE THE POINTS OF CURVATURE AND POINTS OF TANGENCY ON THE RECORD RESOLVED RIGHT-OF-WAY CENTER LINE. MONUMENTS WERE THEN SET AT THESE ESTABLISHED RIGHT-OF-WAY LOCATIONS WITH THE FOLLOWING EXCEPTIONS: THE LOCATION AT ENGINEER'S STATION 1180+00.00 WAS A FALSE CALL IN THE DEED FALLING WITHIN THE EXISTING RIGHT-OF-WAY AND NO MONUMENT WAS SET. THE LOCATION ON THE NEW RIGHT-OF-WAY OPPOSITE ENGINEER'S STATION 1191+29.21 P.T. FELL ON THE STEEP BANK ON THE SOUTH SIDE OF ELK CREEK AND NO MONUMENT WAS SET. THE DEEDED ANGLE POINT IN THE NEW RIGHT-OF-WAY OPPOSITE ENGINEER'S STATION 1191+85.00 FELL IN ELK CREEK AND NO MONUMENT WAS SET. THESE EXCEPTIONS ARE SHOWN ON SHEETS 3 AND 4 AS CALCULATED POINTS. SINCE A MONUMENT WAS NOT SET AT THE FALSE CALL POINT AT ENGINEER'S STATION 1180+00.00, AN ADDITIONAL LOCATION WAS ESTABLISHED AND MONUMENT SET AT THE INTERSECTION OF THE EXISTING RIGHT-OF-WAY WITH THE NEW RIGHT-OF-WAY OPPOSITE ENGINEER'S STATION 1180+14.88. DUE TO THE ANGLE POINT IN THE NEW RIGHT-OF-WAY OPPOSITE ENGINEER'S STATION 1191+85.00 FALLING IN ELK CREEK, ADDITIONAL LOCATIONS WERE ESTABLISHED AND MONUMENTS SET ON THE NEW RIGHT-OF-WAY NORTHEASTERLY OF AND SOUTHWESTERLY OF THIS ANGLE POINT, WITH ONE LOCATION NEAR THE TOP OF THE SOUTH BANK OF ELK CREEK OPPOSITE ENGINEER'S STATION 1190+00.00 AND THE OTHER LOCATION NORTHEASTERLY OF THE NORTH BANK OF ELK CREEK OPPOSITE ENGINEER'S STATION 1194+00.00.

ALL MONUMENTS SET WERE A 5/8 INCH REBAR WITH 2 INCH ALUMINUM CAP MARKED "ODOT RIGHT-OF-WAY" AND STAMPED WITH THE RIGHT-OF-WAY POINT NUMBER FOR THE LOCATION. WHITE CARSONITE POSTS MARKED "RIGHT OF WAY BOUNDARY MARKER NEARBY" WERE SET 4 INCHES TO 8 INCHES IN FRONT OF THE MONUMENT WITHIN THE RIGHT OF RIGHT-OF-WAY. MONUMENTS THAT FELL WITHIN THE PROJECT FOOT PRINT AND SHOWN ON THE HORIZONTAL CONTROL, RECOVERY AND RETRACEMENT SURVEY DONE BY OTAK FOR THE OREGON DEPARTMENT OF TRANSPORTATION AND FILED JANUARY 15, 2009 AS DOUGLAS COUNTY SURVEY MAP ST HWY 38-017 A-1 WERE SEARCHED FOR AND VERIFIED IF EXISTING OR DESTROYED. THESE MONUMENTS ARE NOTED AS RECOVERED OR DESTROYED IN THE TABLES ON SHEET 2. MONUMENTS LOCATED OUTSIDE OF THE IMMEDIATE PROJECT FOOT PRINT AND NOT BEING SUBJECT TO THE CONSTRUCTION WERE NOT SEARCHED FOR AND ARE NOTED AS SUCH ON SHEETS 3 AND 4.

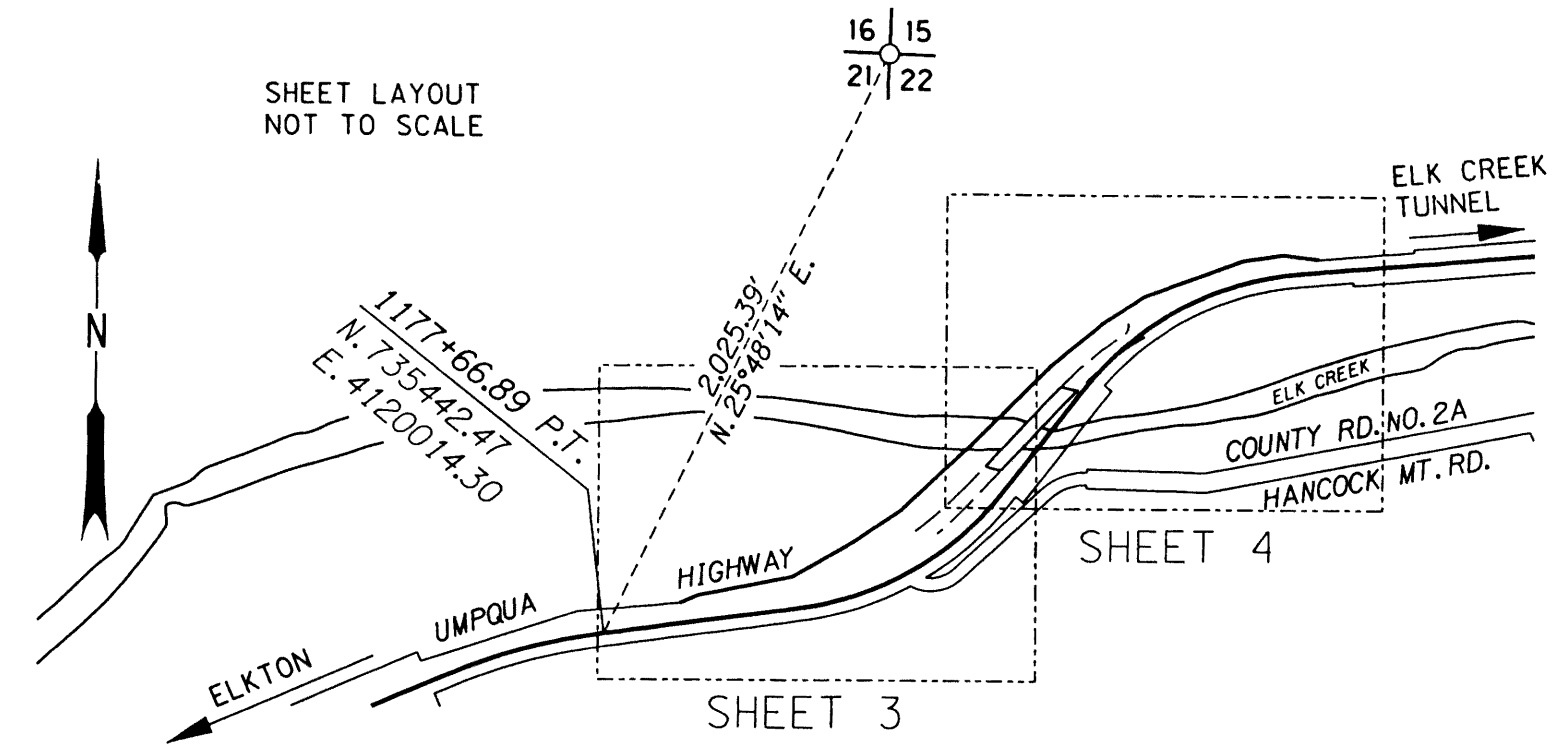
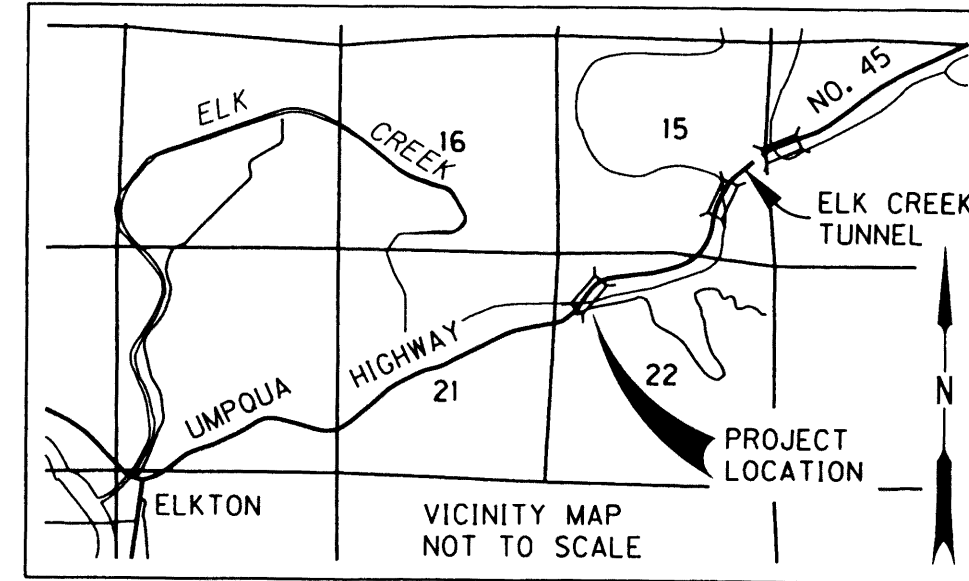
NETWORK POINTS AND DOUGLAS COUNTY SURVEY MONUMENT "HANCOCK" WERE VERIFIED FOR POSITION BY GPS. "HANCOCK" AND NETWORK POINT NO. 3 WERE HELD AND USED TO SET THE RIGHT-OF-WAY MONUMENTS BY RADIAL COORDINATE STAKEOUT. EQUIPMENT USED FOR THIS SURVEY WAS A LEICA GS14 AND TS15 ROBOTIC TOTAL STATION.

THE BASIS OF BEARING AND COORDINATE CONTROL FOR THIS SURVEY IS THE HORIZONTAL CONTROL, RECOVERY AND RETRACEMENT SURVEY DONE BY OTAK FOR THE OREGON DEPARTMENT OF TRANSPORTATION AND FILED JANUARY 15, 2009 AS DOUGLAS COUNTY SURVEY MAP ST HWY 38-017 A-1.

THIS SURVEY UTILIZES A LOCAL DATUM PLANE (LDP) WHICH IS RELATIVE TO THE OREGON COORDINATE SYSTEM (OCS) OF 1983 (CORS96), SOUTH ZONE, WITH RESPECT TO THE LOCAL LATITUDE AND GROUND ELEVATION. THE LDP COORDINATES DEFINE TRUE GROUND DISTANCES.

TO CONVERT THE LDP COORDINATES TO THE OREGON COORDINATE SYSTEM OF 1983(CORS96), SOUTH ZONE, MULTIPLY THE LDP COORDINATES BY 0.99992537.

FILED
 Date: 4-8-2014 By: JC
 This survey consists of:
 Map: ST HWY 38-020 A-1
 Narrative:
 Corner Rpt:
 DOUGLAS COUNTY
 SURVEYOR



REGISTERED
 PROFESSIONAL
 LAND SURVEYOR
Scott Richard Morrison
 OREGON
 JULY 19, 1994
 SCOTT RICHARD MORRISON
 2674
 RENEWS: 12/31/2014

OREGON DEPARTMENT OF TRANSPORTATION
 RIGHT-OF-WAY BOUNDARY MONUMENTATION MAP
 OR 38: ELK CR. - HARDSCRABBLE CR. (D/B) - BUNDLE 401
 BRIDGE # 01601
 UMPQUA HIGHWAY NO. 45
 DOUGLAS COUNTY
 ENGLISH
 GEOMETRONICS UNIT
 4040 FAIRVIEW INDUSTRIAL DR. S.E.
 SALEM, OR 97302-1142
 MARCH 21, 2014
 NOT TO SCALE
 SHEET 1 OF 4