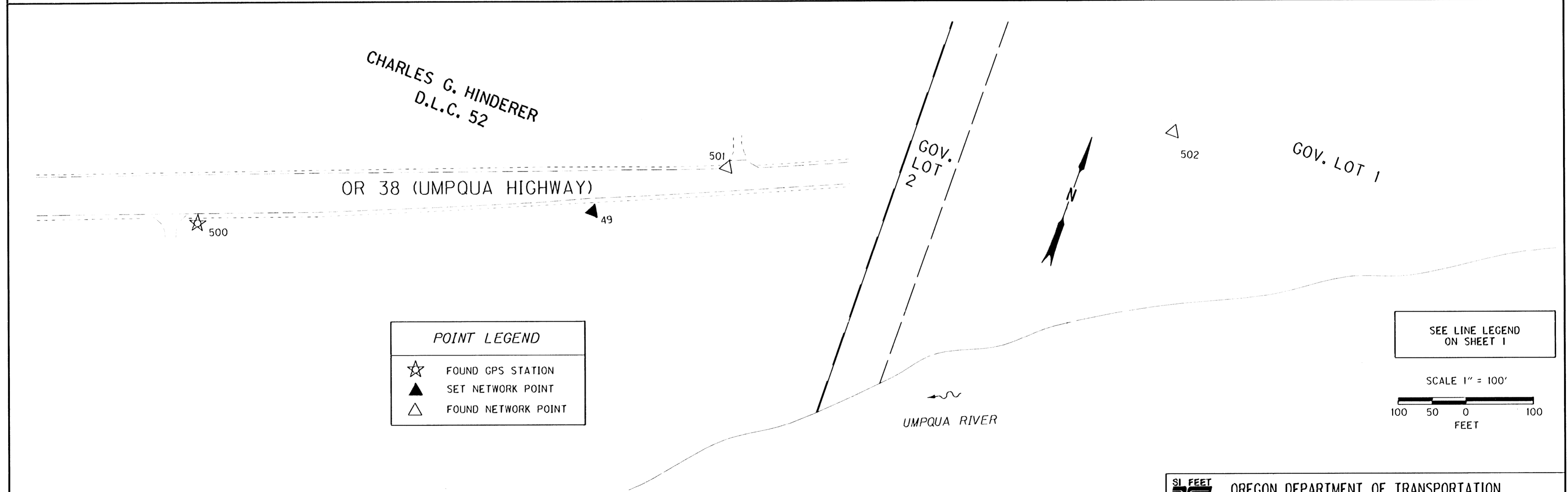
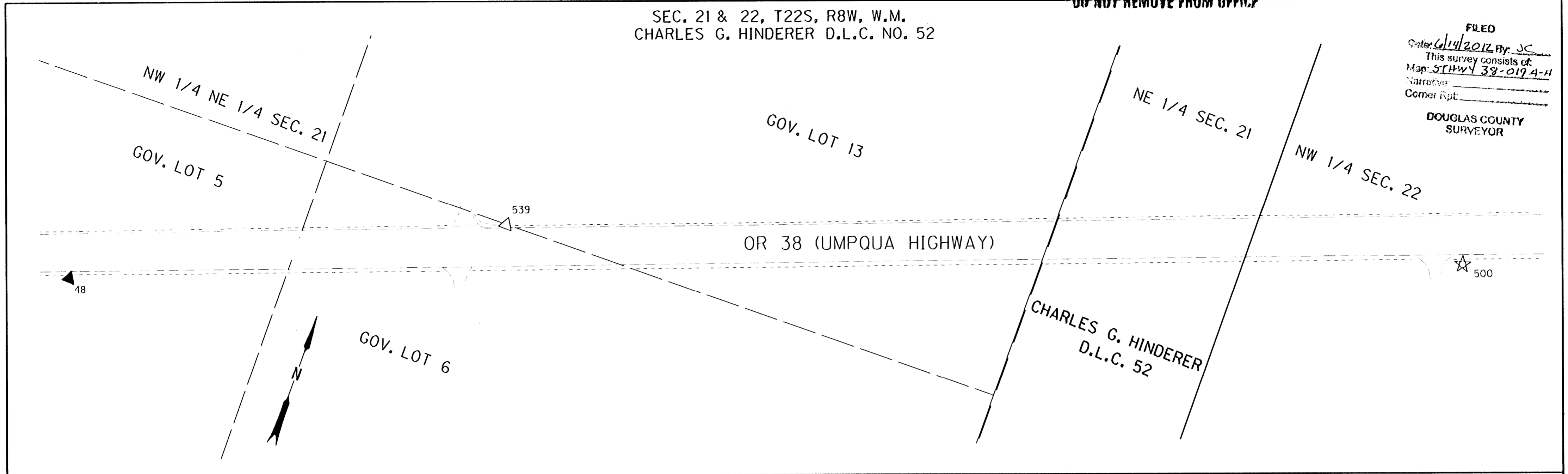


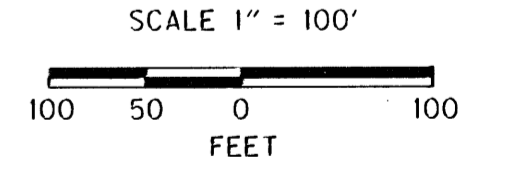
SEC. 21 & 22, T22S, R8W, W.M.
CHARLES G. HINDERER D.L.C. NO. 52

FILED
Order: 6/14/2012 By: JC
This survey consists of:
Map: STHWY 38-019A-H
Narrative: _____
Corner Rpt: _____
DOUGLAS COUNTY
SURVEYOR



POINT LEGEND	
☆	FOUND GPS STATION
▲	SET NETWORK POINT
△	FOUND NETWORK POINT

SEE LINE LEGEND
ON SHEET 1



MONUMENT TABLE

PT. NO.	LDP NORTHING	LDP EASTING	DATE	DESCRIPTION	REFERENCE
49	809680.194	549833.584	2/17/11	SET 5/8" X 30" IRON REBAR WITH 1 1/2" BRASS CAP STAMPED "ODOT CONTROL 49" SOUTH SIDE OF HIGHWAY	ST. HWY. 38-018
500	809446.285	549290.779	2/17/11	FD. 5/8" IRON REBAR WITH 1 1/2" BRASS CAP STAMPED "ODOT CONTROL 500" STABILIZED MONUMENT IN CONCRETE. SOUTH SIDE OF HIGHWAY JUST EAST OF APPROACH	NOT RECORDED
501	809788.949	549999.031	2/17/11	FD. MAG. NAIL WITH WASHER STAMPED "ODOT 501" NORTH SIDE OF HIGHWAY IN APPROACH UNRECORDED POINT FROM SAME PROJECT AS SURVEY ST. HWY. 38-018	NOT RECORDED
502	810082.001	550801.880	2/17/11	FD. MAG. NAIL WITH WASHER STAMPED "ODOT 502" NORTH SIDE OF HIGHWAY IN A.C. APPROACH UNRECORDED POINT FROM SAME PROJECT AS SURVEY ST. HWY. 38-018	NOT RECORDED
539	809020.987	547941.910	2/17/11	FD. 5/8" IRON REBAR WITH 1 1/2" BRASS CAP STAMPED "ODOT CONTROL 539" NORTH SIDE OF HIGHWAY JUST EAST OF APPROACH	ST. HWY.

REGISTERED PROFESSIONAL LAND SURVEYOR

OREGON NOV. 10, 2011
MICKEY D. CALVERT 75099
EXPIRES: 12/31/2013

OREGON DEPARTMENT OF TRANSPORTATION
HORIZONTAL CONTROL MAP
OR 38: SCOTTS CREEK TO ELKTON SLIDE PAVING
UMPQUA HIGHWAY, NO. 45, OR38, M.P. 26.60-32.15
DOUGLAS COUNTY
FILE: I6203RW.DGN MODEL: CRR

FOR ODOT REGION 3
3500 NW. STEWART PKWY.
ROSEBURG, OR. 97470

JUNE 13, 2012
SCALE: 1" = 100'
SHEET 8 OF 8