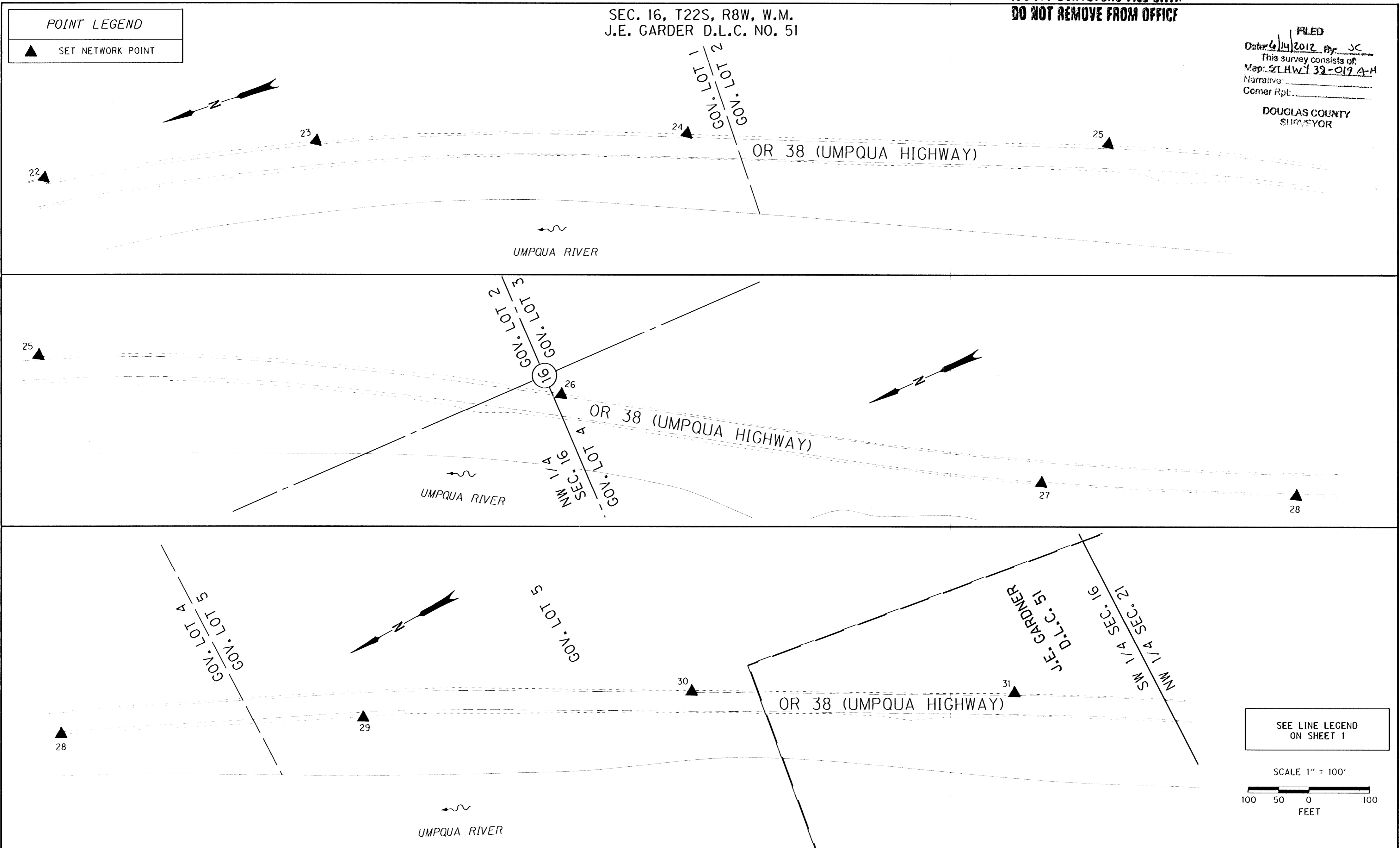


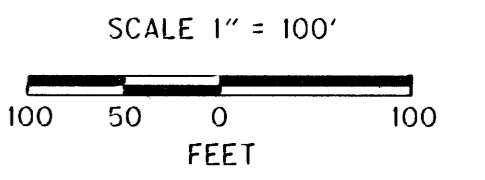
SEC. 16, T22S, R8W, W.M.  
J.E. GARDNER D.L.C. NO. 51

FILED  
Date: 6/14/2012 By: JC  
This survey consists of:  
Map: ST HWY 38-019 A-M  
Narrative:  
Corner Rpt.:  
DOUGLAS COUNTY  
SURVEYOR

**POINT LEGEND**  
▲ SET NETWORK POINT



SEE LINE LEGEND  
ON SHEET 1



MONUMENT TABLE

PT. NO.	LDP NORTHING	LDP EASTING	DATE	DESCRIPTION	REFERENCE
23	815012.469	547149.931	2/15/11	SET 5/8" X 30" IRON REBAR WITH 1 1/2" BRASS CAP STAMPED "ODOT CONTROL 23" NORTH SIDE OF HIGHWAY.	
24	814431.302	546983.528	2/15/11	SET 5/8" X 30" IRON REBAR WITH 1 1/2" BRASS CAP STAMPED "ODOT CONTROL 24" NORTH SIDE OF HIGHWAY.	
25	813780.499	546721.800	2/15/11	SET 5/8" X 30" IRON REBAR WITH 1 1/2" BRASS CAP STAMPED "ODOT CONTROL 25" NORTH SIDE OF HIGHWAY.	
26	813020.287	548313.738	2/15/11	SET 5/8" X 30" IRON REBAR WITH 1 1/2" BRASS CAP STAMPED "ODOT CONTROL 26" NORTH SIDE OF HIGHWAY.	
27	812358.888	545859.930	2/15/11	SET 5/8" X 30" IRON REBAR WITH 1 1/2" BRASS CAP STAMPED "ODOT CONTROL 27" SOUTH SIDE OF HIGHWAY.	
28	811982.121	545869.827	2/15/11	SET 5/8" X 30" IRON REBAR WITH 1 1/2" BRASS CAP STAMPED "ODOT CONTROL 28" SOUTH SIDE OF HIGHWAY.	
29	811533.950	545452.120	2/15/11	SET 5/8" X 30" IRON REBAR WITH 1 1/2" BRASS CAP STAMPED "ODOT CONTROL 29" SOUTH SIDE OF HIGHWAY.	
30	811039.887	545228.152	2/15/11	SET 5/8" X 30" IRON REBAR WITH 1 1/2" BRASS CAP STAMPED "ODOT CONTROL 30" NORTH SIDE OF HIGHWAY.	
31	810578.027	544988.795	2/18/11	SET 5/8" X 30" IRON REBAR WITH 1 1/2" BRASS CAP STAMPED "ODOT CONTROL 31" NORTH SIDE OF HIGHWAY.	

REGISTERED  
PROFESSIONAL  
LAND SURVEYOR

*Mickey D. Calvert*  
OREGON  
NOV. 10, 2011  
MICKEY D. CALVERT  
75099  
EXPIRES: 12/31/2013

SI FEET

OREGON DEPARTMENT OF TRANSPORTATION  
HORIZONTAL CONTROL MAP  
OR 38: SCOTTS CREEK TO ELKTON SLIDE PAVING  
UMPQUA HIGHWAY, NO. 45, OR38, M.P. 26.60-32.15  
DOUGLAS COUNTY  
FILE: 16203RW.DGN MODEL: CRR

FOR ODOT REGION 3  
3500 NW, STEWART PKWY.  
ROSEBURG, OR. 97470

JUNE 13, 2012  
SCALE: 1" = 100'  
SHEET 5 OF 8