

SEC. 9 & 16, T22S, R8W, W.M.
SAMUEL TURNER D.L.C. NO. 50

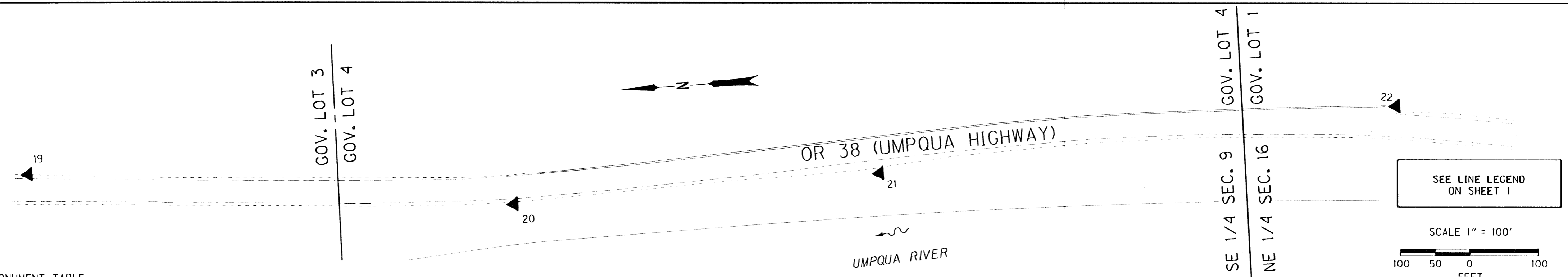
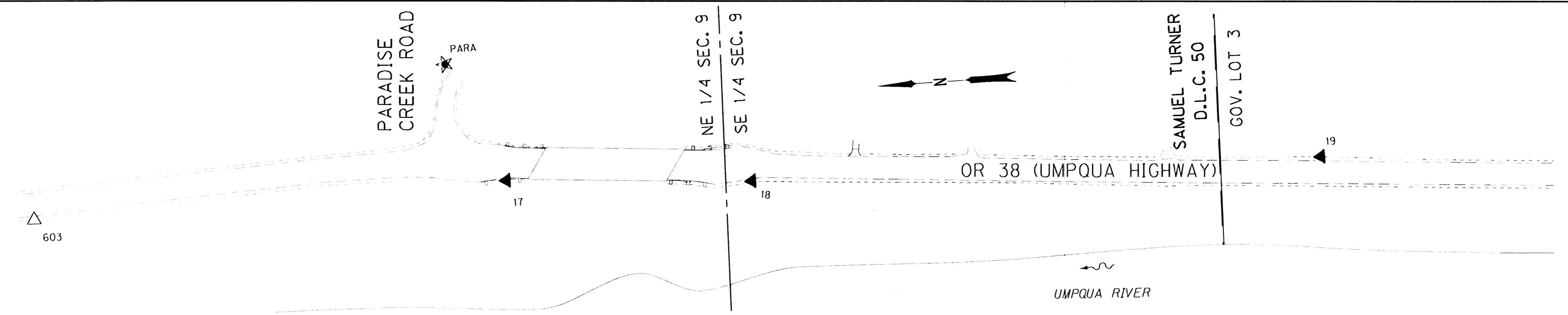
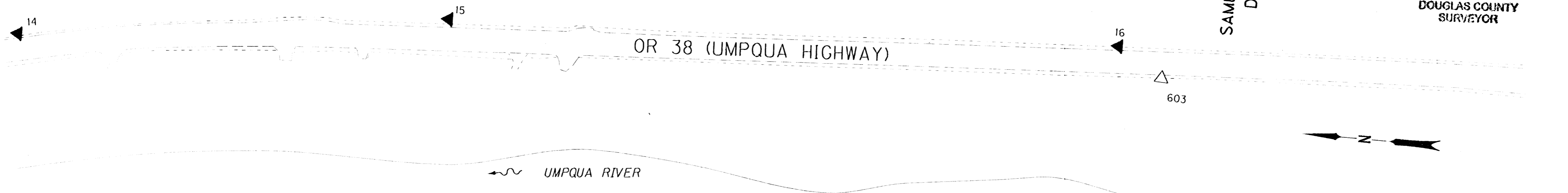
COUNTY SURVEYORS FILE DATA
DO NOT REMOVE FROM OFFICE

SAMUEL TURNER
D.L.C. 50

FILED
Date: 6/14/2012 By: JC
This survey consists of:
Map: ST HWY 38-019 A-4
Narrative:
Corner Rpt:
DOUGLAS COUNTY
SURVEYOR

POINT LEGEND

- ★ SET GPS STATION
- ▲ SET NETWORK POINT
- △ FOUND NETWORK POINT



MONUMENT TABLE

PT. NO.	LDP NORTHING	LDP EASTING	DATE	DESCRIPTION	REFERENCE
15	820337.445	547310.005	2/10/11	SET 5/8" X 30" IRON REBAR WITH 1 1/2" BRASS CAP STAMPED "ODOT CONTROL 15" NORTH SIDE OF HIGHWAY.	
18	819387.951	547358.829	2/10/11	SET 5/8" X 30" IRON REBAR WITH 1 1/2" BRASS CAP STAMPED "ODOT CONTROL 18" NORTH SIDE OF HIGHWAY.	
17	818816.474	547324.685	2/10/11	SET 5/8" X 30" IRON REBAR WITH 1 1/2" BRASS CAP STAMPED "ODOT CONTROL 17" BEHIND GUARDRAIL AT SOUTH SIDE OF HIGHWAY.	
18	818281.965	547299.451	2/15/11	SET 5/8" X 30" IRON REBAR WITH 1 1/2" BRASS CAP STAMPED "ODOT CONTROL 18" SOUTH SIDE OF HIGHWAY 175 + FEET FROM PARADISE CREEK BRIDGE	
19	817438.017	547277.551	2/15/11	SET 5/8" X 30" IRON REBAR WITH 1 1/2" BRASS CAP STAMPED "ODOT CONTROL 19" NORTH SIDE OF HIGHWAY.	
20	818739.432	547185.460	2/15/11	SET 5/8" X 30" IRON REBAR WITH 1 1/2" BRASS CAP STAMPED "ODOT CONTROL 20" SOUTH SIDE OF HIGHWAY.	
21	818208.288	547193.248	2/15/11	SET 5/8" X 30" IRON REBAR WITH 1 1/2" BRASS CAP STAMPED "ODOT CONTROL 21" RIVER OR SOUTH SIDE OF HIGHWAY.	
22	815455.956	547238.853	2/15/11	SET 1" COPPER DISK IN TOP OF CONCRETE SHOULDER BARRIER AT EAST END OF BARRIER IN EARTH MOUND. DISK IS STAMPED "ODOT CONTROL 22"	
603	819301.514	547315.916	2/28/11	FD. 1 1/2" ALUMINUM CAP STAMPED "ODOT HORIZONTAL CONTROL 6" ORIGINALLY SET FOR PARADISE CREEK BRIDGE PROJECT. CARSONITE POST NEARBY.	ST. HWY. 38-005
PARA	818693.244	547497.821	2/11/11	SET 5/8" X 30" IRON REBAR WITH 1 1/2" BRASS CAP STAMPED "ODOT CONTROL PARA" STABILIZED IN CONCRETE. "GPS POINT" LOCATED + 100 FT. UP PARADISE CREEK ROAD.	

REGISTERED PROFESSIONAL LAND SURVEYOR
Signature
OREGON NOV. 10, 2011 MICKEY D. CALVERT 75099 EXPIRES: 12/31/2013

SI FEET
OREGON DEPARTMENT OF TRANSPORTATION
HORIZONTAL CONTROL MAP
OR 38: SCOTTS CREEK TO ELKTON SLIDE PAVING
UMPQUA HIGHWAY, NO. 45, OR38, M.P. 26.60-32.15
DOUGLAS COUNTY
FILE: 16203RW.DGN MODEL: CRR
FOR ODOT REGION 3
3500 NW. STEWART PKWY.
ROSEBURG, OR. 97470
JUNE 13, 2012
SCALE: 1" = 100'
SHEET 4 OF 8

