

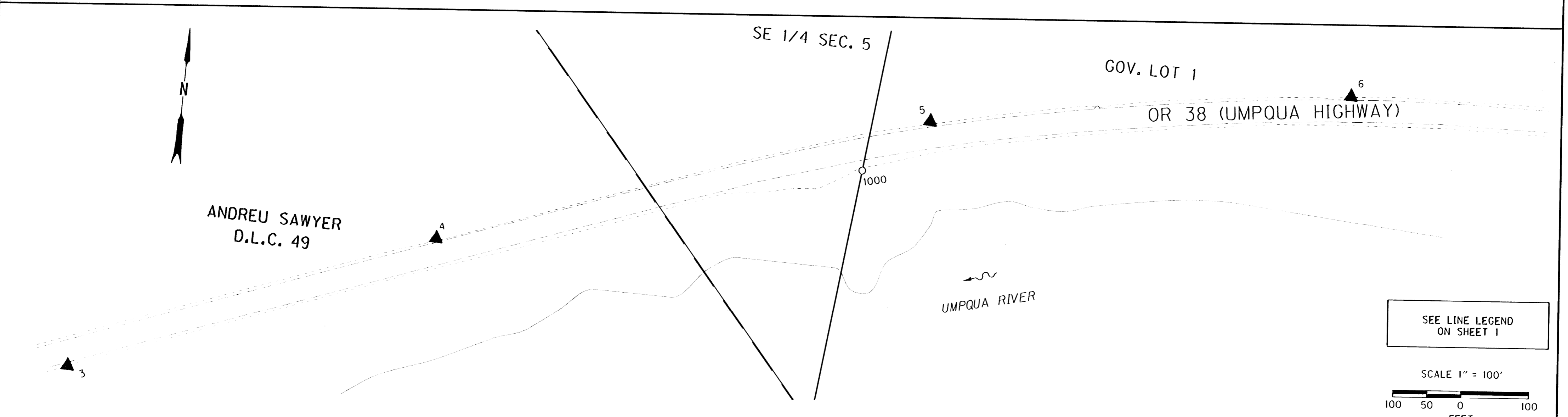
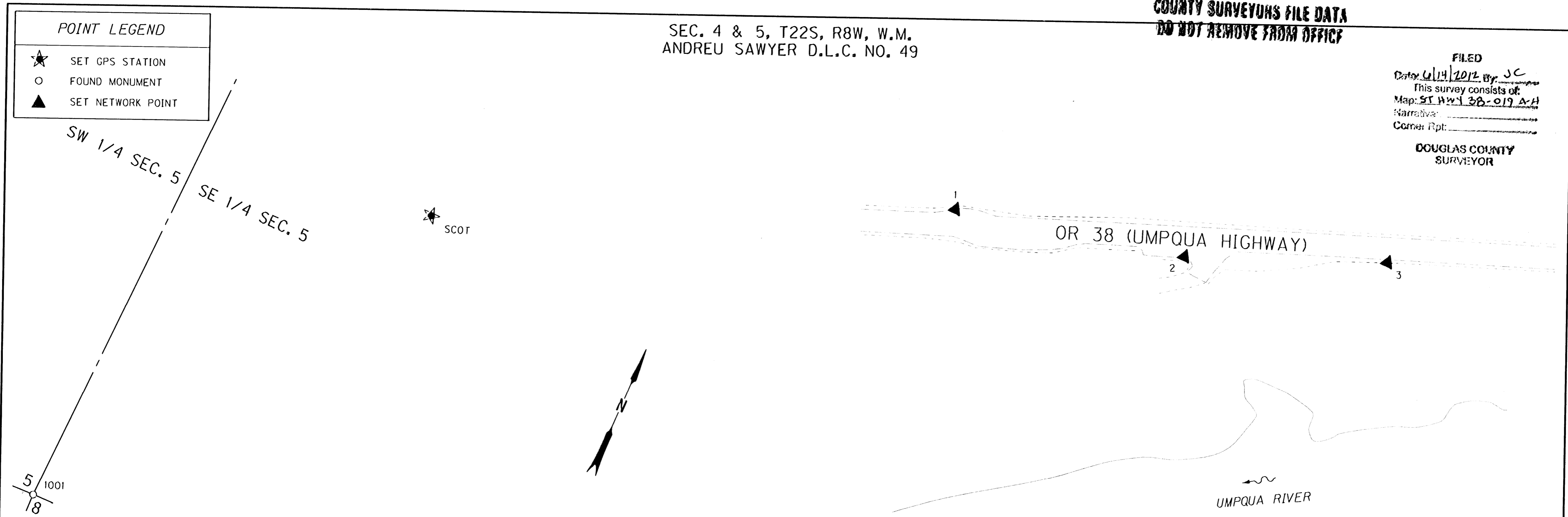
SEC. 4 & 5, T22S, R8W, W.M.
ANDREU SAWYER D.L.C. NO. 49

FILED
Date: 6/14/2012 By: JC
This survey consists of:
Map: ST HWY 38-019 A-H
Narrative:
Corner Rpt:

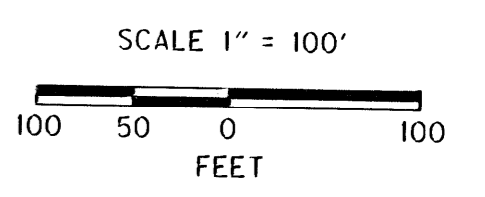
DOUGLAS COUNTY
SURVEYOR

POINT LEGEND

- ★ SET GPS STATION
- FOUND MONUMENT
- ▲ SET NETWORK POINT



SEE LINE LEGEND
ON SHEET 1



MONUMENT TABLE

PT. NO.	LDP NORTHING	LDP EASTING	DATE	DESCRIPTION	REFERENCE
1	821975.861	542031.002	2/10/11	SET 5/8" X 30" IRON REBAR WITH 1 1/2" BRASS CAP STAMPED "ODOT CONTROL 1" AT MAILBOX PULLOUT	
2	822049.327	542368.772	2/10/11	SET 5/8" X 30" IRON REBAR WITH 1 1/2" BRASS CAP STAMPED "ODOT CONTROL 2" IN A.C. SURFACE AT RV RESORT ENTRANCE	
3	822182.728	542842.982	2/10/11	SET 5/8" X 30" IRON REBAR WITH 1 1/2" BRASS CAP STAMPED "ODOT CONTROL 3"	
4	822403.893	543183.040	2/10/11	SET 5/8" X 30" IRON REBAR WITH 1 1/2" BRASS CAP STAMPED "ODOT CONTROL 4" NORTH SIDE IN DITCH	
5	822849.919	543888.048	2/10/11	SET 5/8" X 30" IRON REBAR WITH 1 1/2" BRASS CAP STAMPED "ODOT CONTROL 5" NORTH SIDE IN DITCH	
6	822750.535	544479.388	2/10/11	SET 1" COPPER DISK IN S.E. CORNER OF CONCRETE INLET NORTH SIDE OF HIGHWAY STAMPED "ODOT CONTROL 6"	
1000	822587.947	543776.421	3/7/11	FD. 2 1/2" BRASS DISK STAMPED "DOUGLAS COUNTY SURVEYOR 1978 T22S R8W W.C.S5 S4 M.C." ON 1 1/4" IRON PIPE 0.2 FT ABOVE SURFACE. FAIR COND. LEANS SLIGHTLY S.W. WITNESS POST NEARBY	VOL 58 PG 21943
1001	821043.876	540961.875	3/7/11	FD. 2 1/2" BRASS DISK ON 1 1/4" IRON PIPE STAMPED "COUNTY SURVEYORS OFFICE 1/4 S5 S8 BLM T22S R8W 1983" 1.5 FT BELOW SURFACE IN PASTURE GOOD CONDITION	VOL 33 PG 13707
SCOT	821854.642	541331.018	2/10/11	SET 5/8" X 30" IRON REBAR WITH 1 1/2" BRASS CAP STAMPED "ODOT CONTROL SCOT" STABILIZED IN CONCRETE	

REGISTERED
PROFESSIONAL
LAND SURVEYOR

OREGON
NOV. 10, 2011
MICKEY D. CALVERT
75099
EXPIRES: 12/31/2013

SI FEET

OREGON DEPARTMENT OF TRANSPORTATION

HORIZONTAL CONTROL MAP
OR 38: SCOTTS CREEK TO ELKTON SLIDE PAVING
UMPQUA HIGHWAY, NO. 45, OR38, M.P. 26.60-32.15
DOUGLAS COUNTY
FILE: 16203RW.DGN MODEL: CRR

FOR ODOT REGION 3
3500 NW. STEWART PKWY.
ROSEBURG, OR. 97470

JUNE 13, 2012
SCALE: 1" = 100'
SHEET 2 OF 8