

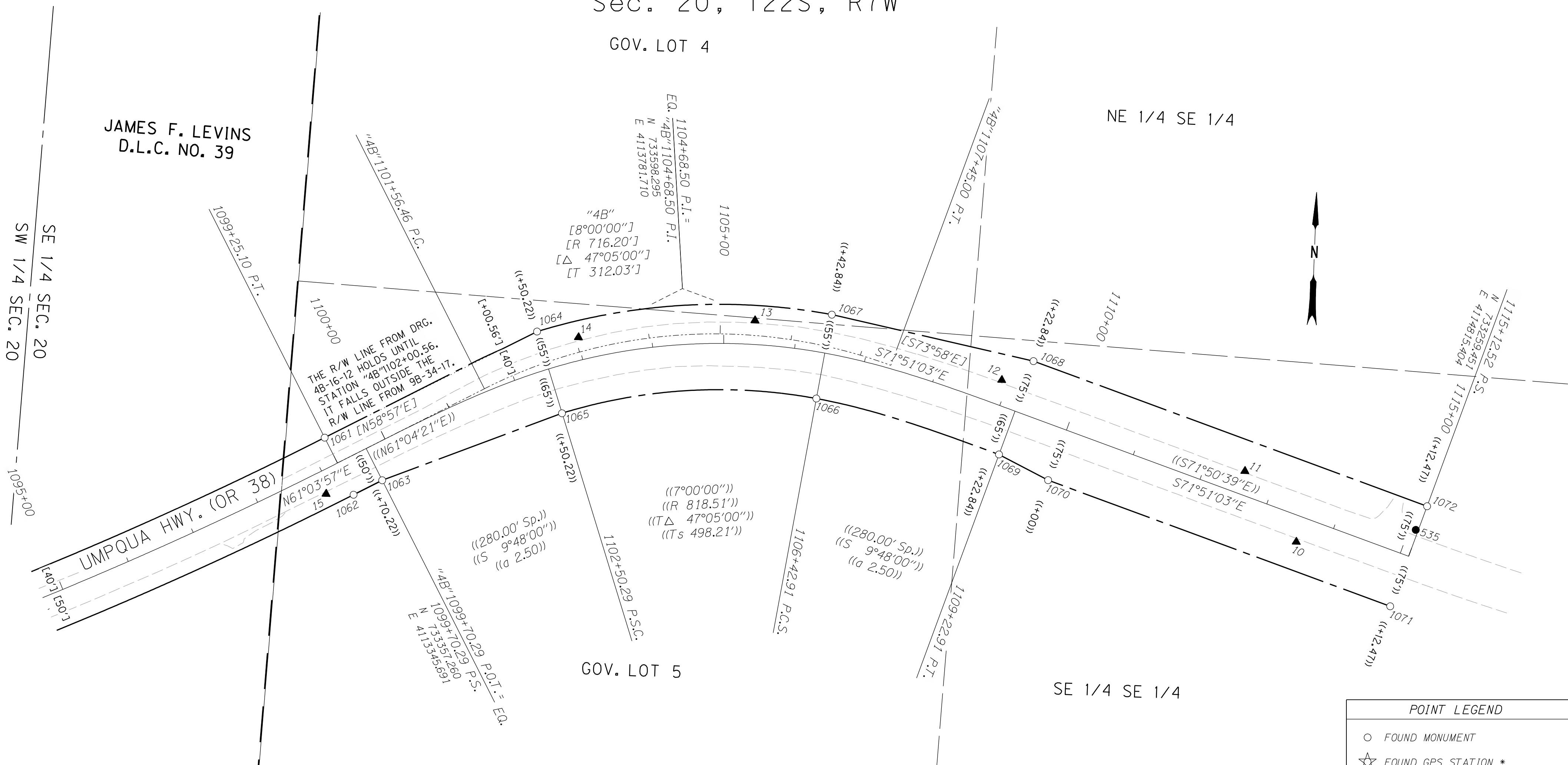
Sec. 20, T22S, R7W

GOV. LOT 4

NE 1/4 SE 1/4

JAMES F. LEVINS
D.L.C. NO. 39

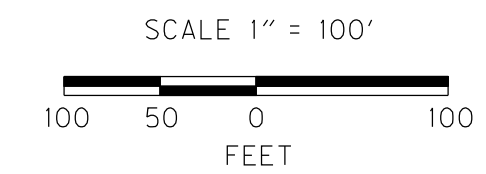
SE 1/4 SEC. 20
SW 1/4 SEC. 20



GOV. LOT 5

SE 1/4 SE 1/4

RECORD DATA	
()	PER ODOT DRG. 1B-22-23 & 2B-26-14
(())	PER ODOT DRG. 9B-34-17
[]	PER ODOT DRG. 4B-16-12
NO BRACKET	MEASURED/RESOLVED SUPERCEDES RECORD



POINT LEGEND	
○	FOUND MONUMENT
☆	FOUND GPS STATION *
▲	SET NETWORK POINT *
●	SET STRATEGIC POINT *
⊕	FOUND BENCH MARK *
⊗	DESTROYED BENCH MARK *
* CONTROL MONUMENT TABLE & BOUNDARY LINE LEGEND ON SHEET 3	

RECOVERED MONUMENTS

NOTE: OFFSETS WITH A - (MINUS) ARE LEFT, WITHOUT ARE RIGHT

PT. ID.	LDP NORTHING	LDP EASTING	ELEV.	STATION	OFFSET	DATE	DESCRIPTION	REFERENCE
1061	733370.371	4113286.810		1099+25.10	-39.96	12/6/2006	FD. 5/8" IRON REBAR W/ 1 1/4" PLASTIC CAP STAMPED "OSHD R/W" FLUSH W/ SURFACE IN GOOD CONDITION PADDLE BOARD NEARBY MARKED "SHRW 1099+25.10 POT 40 LT"	DRG 9B-34-17
1062	733291.678	4113330.307		1099+25.10	49.95	12/6/2006	FD. 5/8" IRON REBAR W/ 1 1/4" PLASTIC CAP STAMPED "OSHD R/W" FLUSH W/ SURFACE IN GOOD CONDITION PADDLE BOARD NEARBY MARKED "SHRW 1099+25.10 POT 50 RT"	DRG 9B-34-17
1063	733313.479	4113369.801		1099+70.21	49.98	12/6/2006	FD. 5/8" IRON REBAR W/ 1 1/4" PLASTIC CAP STAMPED "OSHD R/W" 0.1 FT. ABOVE SURFACE IN GOOD CONDITION PADDLE BOARD NEARBY MARKED "SHRW 1099+70.22 PS 50 RT"	DRG 9B-34-17
1064	733530.388	4113579.657		1102+50.26	-55.05	12/6/2006	FD. 5/8" IRON REBAR W/ 1 1/4" PLASTIC CAP STAMPED "OSHD R/W" 0.2 FT. BELOW SURFACE IN GOOD CONDITION PADDLE BOARD NEARBY MARKED "SHRW 1102+50.22 PSC 55 LT"	DRG 9B-34-17
1065	733416.860	4113618.869		1102+50.07	65.06	12/6/2006	FD. 5/8" IRON REBAR W/ 1 1/4" PLASTIC CAP STAMPED "OSHD R/W" 0.3 FT. BELOW SURFACE IN GOOD CONDITION PADDLE BOARD NEARBY MARKED "SHRW 1102+50.22 PSC 65 RT"	DRG 9B-34-17
1066	733450.646	4113975.390		1106+42.85	64.98	12/6/2006	FD. 5/8" IRON REBAR W/ 1 1/4" PLASTIC CAP STAMPED "OSHD R/W" 0.8 FT. BELOW SURFACE IN GOOD CONDITION PADDLE BOARD NEARBY MARKED "SHRW 1106+42.84 PCS 65 RT"	DRG 9B-34-17
1067	733569.320	4113992.804		1106+42.86	-54.96	12/6/2006	FD. 5/8" IRON REBAR W/ 1 1/4" PLASTIC CAP STAMPED "OSHD R/W" 0.2 FT. ABOVE SURFACE IN GOOD CONDITION PADDLE BOARD NEARBY MARKED "SHRW 1106+42.84 PCS 55 LT"	DRG 9B-34-17
1068	733514.323	4114278.423		1109+22.86	-74.93	12/6/2006	FD. 5/8" IRON REBAR W/ 1 1/4" PLASTIC CAP STAMPED "OSHD R/W" 0.1 FT. ABOVE SURFACE IN GOOD CONDITION PADDLE BOARD NEARBY MARKED "SHRW 1109+22.84 PT 75 LT"	DRG 9B-34-17
1069	733381.426	4114234.834		1109+22.84	64.94	12/6/2006	FD. 5/8" IRON REBAR W/ 1 1/4" PLASTIC CAP STAMPED "OSHD R/W" 0.1 FT. ABOVE SURFACE IN GOOD CONDITION PADDLE BOARD NEARBY MARKED "SHRW 1109+22.84 PT 65 RT"	DRG 9B-34-17
1070	733347.846	4114305.080		1110+00.05	74.96	12/6/2006	FD. 5/8" IRON REBAR W/ 1 1/4" PLASTIC CAP STAMPED "OSHD R/W" 0.2 FT. ABOVE SURFACE IN GOOD CONDITION PADDLE BOARD NEARBY MARKED "SHRW 1110+00 75 RT"	DRG 9B-34-17
1071	733188.207	4114792.065				12/6/2006	FD. 5/8" IRON REBAR W/ 1 1/4" PLASTIC CAP STAMPED "OSHD R/W" 0.2 FT. ABOVE SURFACE IN GOOD CONDITION PADDLE BOARD NEARBY MARKED "SHRW 1115+12.47 PS 75 RT"	DRG 9B-34-17
1072	733330.696	4114838.744		1115+12.50	-74.97	12/6/2006	FD. 5/8" IRON REBAR W/ 1 1/4" PLASTIC CAP STAMPED "OSHD R/W" 0.1 FT. ABOVE SURFACE IN GOOD CONDITION PADDLE BOARD NEARBY MARKED "SHRW 1115+12.47 PS 75 LT"	DRG 9B-34-17

OREGON DEPARTMENT OF TRANSPORTATION
 HORIZONTAL CONTROL, RECOVERY AND RETRACEMENT MAP
 OR 38: ELKTON SLIDE - HANCOCK MOUNTAIN ROAD PAVING
 UMPQUA HWY. NO. 45, OR 38, M.P. 31.74 - 38.09
 DOUGLAS COUNTY
 FILE:13802RW.DGN MODEL:SHEETS

FOR ODOT REGION 3
 3500 NW STEWART PKWY.
 ROSEBURG, OR. 97470

AUGUST 3, 2010
 SCALE: 1" = 100'
 SHEET 9 OF 9