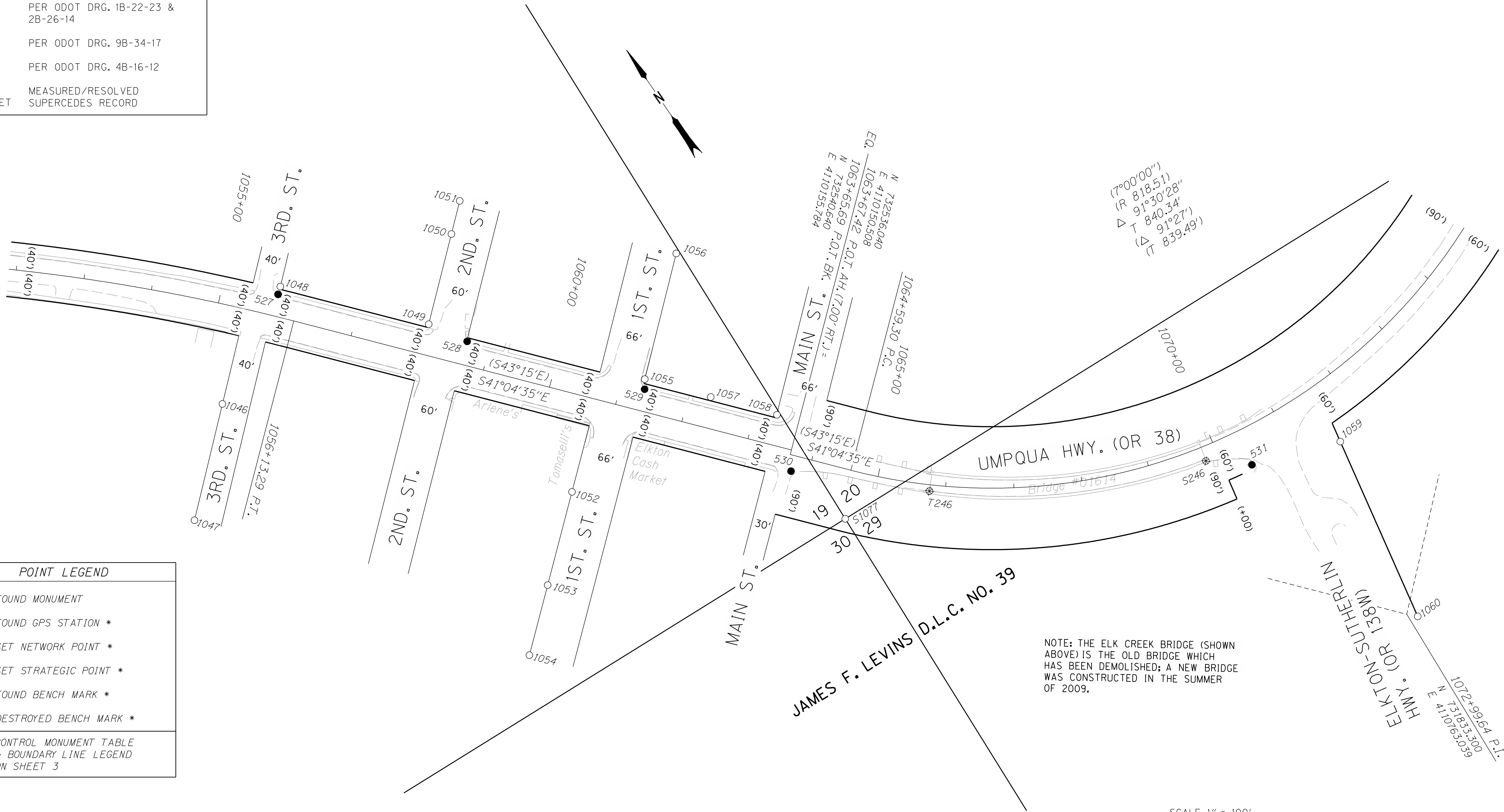


Sec. 19, 29, 30, T22S, R7W

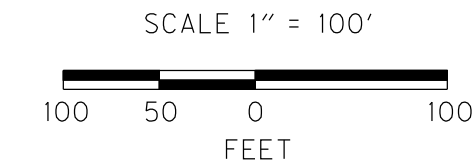
RECORD DATA	
()	PER ODOT DRG. 1B-22-23 & 2B-26-14
(())	PER ODOT DRG. 9B-34-17
[]	PER ODOT DRG. 4B-16-12
NO BRACKET	MEASURED/RESOLVED SUPERCEDES RECORD

POINT LEGEND	
○	FOUND MONUMENT
☆	FOUND GPS STATION *
▲	SET NETWORK POINT *
●	SET STRATEGIC POINT *
⊕	FOUND BENCH MARK *
⊗	DESTROYED BENCH MARK *
* CONTROL MONUMENT TABLE & BOUNDARY LINE LEGEND ON SHEET 3	



RECOVERED MONUMENTS

NOTE: OFFSETS WITH A - (MINUS) ARE LEFT, WITHOUT ARE RIGHT



PT. ID.	LDP NORTHING	LDP EASTING	ELEV.	STATION	OFFSET	DATE	DESCRIPTION	REFERENCE
1046	733066.620	4109506.735				12/4/2006	FD. 2" I.D. IRON PIPE 0.7 FT. BELOW SURFACE IN GOOD CONDITION	M 7 - 46
1047	732949.161	4109376.710				12/4/2006	FD. 3/4" I.D. IRON PIPE 0.1 FT. BELOW SURFACE RUSTED IN POOR CONDITION	M 7 - 46
1048	733160.428	4109673.700		1055+82.19	-44.00	12/4/2006	FD. 5/8" IRON ROD W/ 1 1/4" DAMAGED PLASTIC CAP STAMPED "SERV" REST IS UNREADABLE 0.2 FT. BELOW SURFACE IN GOOD CONDITION	M 110 - 71
1049	732992.374	4109821.737		1058+05.67	-45.00	12/6/2006	FD. 5/8" IRON ROD W/ 1 1/4" DAMAGED PLASTIC CAP STAMPED "BAUGHMAN TECH. SERV." 0.1 FT. BELOW SURFACE IN GOOD CONDITION	M 110 - 71
1050	733082.528	4109923.715				12/4/2006	FD. 5/8" IRON ROD W/ 1 1/4" DAMAGED PLASTIC CAP STAMPED "BAUGHMAN TECH. SERV." 0.2 FT. BELOW SURFACE IN GOOD CONDITION	M 111 - 53
1051	733115.629	4109961.174				12/4/2006	FD. 5/8" IRON REBAR W/ 1 1/4" PLASTIC CAP STAMPING UNREADABLE 0.4 FT. ABOVE SURFACE IN GOOD CONDITION	M 110 - 71
1052	732671.354	4109856.132		1060+70.26	140.00	12/4/2006	FD. 5/8" IRON REBAR 0.2 FT. ABOVE SURFACE IN GOOD CONDITION	M 78 - 54
1053	732578.841	4109749.680		1060+70.06	281.03	12/4/2006	FD. 5/8" IRON REBAR W/ 1 1/4" PLASTIC CAP STAMPED "D.A. EDWARDS LS 2339" 0.4 FT. ABOVE SURFACE IN GOOD CONDITION	M 147 - 47
1054	732509.381	4109669.657		1060+69.84	387.00	12/4/2006	FD. 5/8" IRON REBAR W/ 1 1/4" PLASTIC CAP STAMPED "D.A. EDWARDS LS 2339" 0.1 FT. ABOVE SURFACE IN GOOD CONDITION	M 147 - 47
1055	732747.327	4110037.292		1061+32.03	-46.48	12/4/2006	FD. 5/8" IRON ROD W/ 1 1/4" PLASTIC CAP STAMPED "LANDMARK" 0.2 FT. BELOW SURFACE IN GOOD CONDITION	M 139 - 79
1056	732873.157	4110179.139				12/4/2006	FD. 5/8" IRON ROD W/ 1 1/4" PLASTIC CAP STAMPED "LANDMARK" FLUSH W/ A.C. SURFACE IN GOOD CONDITION	M 139 - 79
1057	732671.241	4110102.149		1062+32.00	-45.38	12/4/2006	FD. 1/2" IRON REBAR 0.3 FT. ABOVE SURFACE IN GOOD CONDITION	CS 58/178-6
1058	732594.988	4110167.323		1063+32.30	-44.41	12/4/2006	FD. 5/8" IRON REBAR 0.1 FT. ABOVE SURFACE IN GOOD CONDITION	CS 58/178-6
1059	732096.925	4110825.534				12/4/2006	FD. 5/8" IRON REBAR FLUSH W/ SURFACE BENT SW TIED WHERE ENTERS GROUND IN POOR CONDITION	M 87-54
1060	731821.685	4110774.550				12/4/2006	FD. 5/8" IRON REBAR FLUSH W/ SURFACE IN GOOD CONDITION R/W STA. 3+50 80 LT.	DRG 8B-9-14
S1077	732412.911	4110163.828		1064+68.21	70.92	12/5/2006	FD. 1" SQUARE IRON BAR 0.5 FT. ABOVE SURFACE IN GOOD CONDITION SECTION CORNER T22S R7W S19 S20 S29 & S30	CS 15/7



OREGON DEPARTMENT OF TRANSPORTATION
 HORIZONTAL CONTROL, RECOVERY AND RETRACEMENT MAP
 OR 38: ELKTON SLIDE - HANCOCK MOUNTAIN ROAD PAVING
 UMPQUA HWY. NO. 45, OR 38, M.P. 31.74 - 38.09
 DOUGLAS COUNTY
 FILE:I3802RW.DGN MODEL:SHEETS

FOR ODOT REGION 3
 3500 NW. STEWART PKWY.
 ROSEBURG, OR. 97470

AUGUST 3, 2010
 SCALE: 1" = 100'
 SHEET 7 OF 9