

Sec. 19, T22S, R7W

JAMES F. LEVINS D.L.C. NO. 39

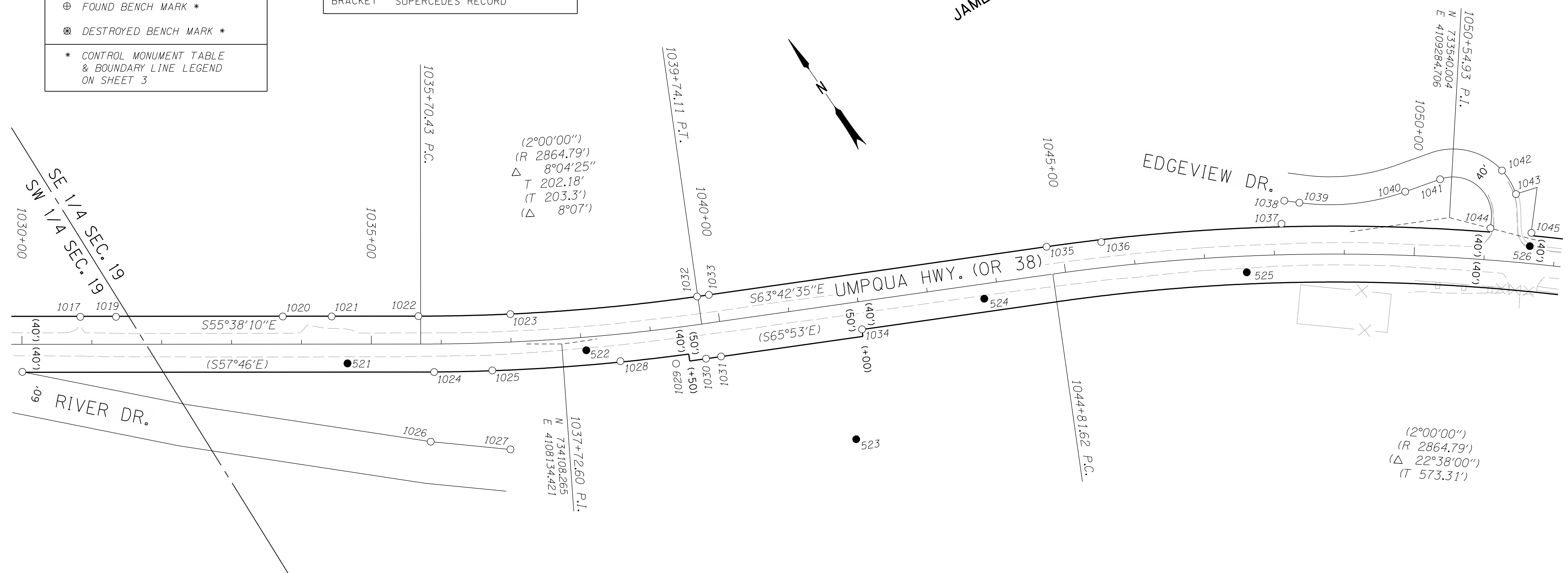
POINT LEGEND

- FOUND MONUMENT
- ☆ FOUND GPS STATION *
- ▲ SET NETWORK POINT *
- SET STRATEGIC POINT *
- ⊕ FOUND BENCH MARK *
- ⊗ DESTROYED BENCH MARK *

* CONTROL MONUMENT TABLE & BOUNDARY LINE LEGEND ON SHEET 3

RECORD DATA

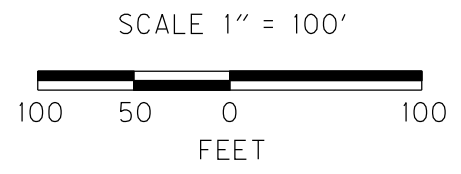
- () PER ODOT DRG. 1B-22-23 & 2B-26-14
- (()) PER ODOT DRG. 9B-34-17
- [] PER ODOT DRG. 4B-16-12
- NO MEASURED/RESOLVED
- BRACKET SUPERCEDES RECORD



RECOVERED MONUMENTS

NOTE: OFFSETS WITH A - (MINUS) ARE LEFT, WITHOUT ARE RIGHT

PT. ID.	LDP NORTHING	LDP EASTING	ELEV.	STATION	OFFSET	DATE	DESCRIPTION	REFERENCE
1019	734500.779	4107629.859		1031+34.55	-39.21	12/4/2006	FD. 1/2" I.D. IRON PIPE 0.6 FT. ABOVE SURFACE IN GOOD CONDITION	M 32-40
1020	734366.415	4107827.105		1033+73.21	-39.63	12/4/2006	FD. 1/2" IRON REBAR 0.7 FT. ABOVE SURFACE IN GOOD CONDITION	M 32-40
1021	734326.879	4107884.820		1034+43.17	-39.57	12/4/2006	FD. 5/8" IRON REBAR FLUSH W/ SURFACE IN GOOD CONDITION	M 32-40
1022	734257.146	4107987.557		1035+67.34	-40.00	12/6/2006	FD. 5/8" IRON ROD 0.3 FT. ABOVE SURFACE IN GOOD CONDITION R/W STA. 1035+67.3 P.C. 40' LT.	DRG 1B-22-23
1023	734185.168	4108097.689		1037+00.73	-39.83	12/6/2006	FD. 1/2" IRON REBAR 0.4 FT. ABOVE SURFACE IN GOOD CONDITION	M 32-40
1024	734178.420	4107960.875		1035+89.48	40.11	12/6/2006	FD. 3/4" IRON REBAR 0.3 FT. ABOVE SURFACE IN GOOD CONDITION	M 12-39
1025	734133.290	4108030.828		1036+71.59	39.63	12/6/2006	FD. 5/8" IRON REBAR W/ 1 1/4" PLASTIC CAP STAMPED "D.A. EDWARDS LS 2339" 0.3 FT. ABOVE SURFACE IN GOOD CONDITION	M 12-39
1026	734098.987	4107900.594				12/4/2006	FD. 5/8" IRON REBAR W/ 1 1/4" PLASTIC CAP STAMPED "D.A. EDWARDS LS 2339" FLUSH W/ SURFACE IN GOOD CONDITION	2001-0080
1027	734025.383	4107988.467				12/4/2006	FD. 5/8" IRON REBAR W/ 1 1/4" PLASTIC CAP STAMPING UNREADABLE 0.2 FT. ABOVE SURFACE IN GOOD CONDITION	2001-0080
1028	734040.671	4108189.607		1038+52.95	38.76	12/6/2006	FD. 3/4" IRON REBAR 0.5 FT. ABOVE SURFACE IN GOOD CONDITION	M 12-39
1029	733992.786	4108253.433		1039+30.56	51.16	12/6/2006	FD. 5/8" IRON REBAR 1.0 FT. ABOVE SURFACE IN GOOD CONDITION	CS 55/5-2
1030	733974.409	4108292.819		1039+73.25	49.85	12/6/2006	FD. 1/2" IRON ROD 1.0 FT. BELOW SURFACE BENT TO THE EAST POOR CONDITION TIED WERE ROD ENTERS GROUND	M 12-39
1031	733964.805	4108312.355		1039+95.01	49.81	12/6/2006	FD. 3/4" IRON REBAR 0.6 FT. ABOVE SURFACE BENT SLIGHTLY TO THE EAST POOR CONDITION TIED WERE ROD ENTERS GROUND	M 12-39
1032	734055.024	4108332.504		1039+73.10	-40.00	12/4/2006	FD. 5/8" IRON ROD 1.0 FT. ABOVE SURFACE IN GOOD CONDITION 4" X 4" WOOD WITNESS POST NEARBY R/W STA. 1039+73.1 P.T. 40' LT.	DRG 1B-22-23
1033	734047.489	4108347.703		1039+90.07	-39.98	12/4/2006	FD. 5/8" IRON REBAR W/ 1 1/4" PLASTIC CAP STAMPED "B.T.S. ENG SURV" 0.7 FT. ABOVE SURFACE IN GOOD CONDITION	M 140-14
1034	733882.940	4108500.746		1042+00.17	39.77	12/6/2006	FD. 5/8" IRON ROD 1.8 FT. BELOW SURFACE IN GOOD CONDITION R/W STA. 1042+00 40' RT.	DRG 1B-22-23
1035	733831.309	4108785.352		1044+78.20	-40.00	12/6/2006	FD. 5/8" IRON ROD 0.2 FT. ABOVE SURFACE BENT SLIGHTLY WEST IN POOR CONDITION TIED WHERE ROD ENTERS GROUND R/W STA. 1044+78.2 PC 40' LT.	DRG 1B-22-23
1036	733792.566	4108853.819		1045+55.81	-36.56	12/6/2006	FD. 5/8" IRON REBAR W/ 1 1/4" PLASTIC CAP STAMPED "BEEDLE LS 2798" 0.2 FT. ABOVE SURFACE IN GOOD CONDITION	Vol. 21 P. 68A
1037	733668.482	4109081.334		1048+11.32	-44.36	12/6/2006	FD. 5/8" IRON REBAR 0.3 FT. ABOVE SURFACE BENT SLIGHTLY IN POOR CONDITION TIED WHERE ROD ENTERS GROUND	M 59-19
1038	733693.492	4109103.323				12/6/2006	FD. 5/8" IRON REBAR W/ 1 1/4" PLASTIC CAP STAMPED "BEEDLE LS 2798" 0.1 FT. ABOVE SURFACE IN GOOD CONDITION	Vol. 21 P. 68A
1039	733678.937	4109119.578				12/4/2006	FD. 5/8" IRON REBAR W/ 1 1/4" PLASTIC CAP STAMPED "BEEDLE LS 2798" 0.2 FT. ABOVE SURFACE IN GOOD CONDITION	Vol. 21 P. 68A
1040	733606.358	4109253.400				12/4/2006	FD. 5/8" IRON REBAR W/ 1 1/4" PLASTIC CAP STAMPED "BEEDLE LS 2798" 0.1 FT. ABOVE SURFACE IN GOOD CONDITION	Vol. 21 P. 68A
1041	733592.867	4109304.635				12/4/2006	FD. 5/8" IRON REBAR W/ 1 1/4" PLASTIC CAP STAMPED "BEEDLE LS 2798" 0.3 FT. ABOVE SURFACE IN GOOD CONDITION	Vol. 21 P. 68A
1042	733553.146	4109384.842				12/4/2006	FD. 5/8" IRON REBAR W/ 1 1/4" PLASTIC CAP STAMPED "BEEDLE LS 2798" 0.2 FT. ABOVE SURFACE IN GOOD CONDITION	Vol. 21 P. 68A
1043	733514.055	4109382.264				12/4/2006	FD. 5/8" IRON REBAR W/ 1 1/4" PLASTIC CAP STAMPED "BEEDLE LS 2798" 0.3 FT. ABOVE SURFACE IN GOOD CONDITION	Vol. 21 P. 68A
1044	733494.301	4109324.506		1051+05.95	-45.49	12/4/2006	FD. 5/8" IRON REBAR W/ 1 1/4" PLASTIC CAP STAMPED "BEEDLE LS 2798" 0.1 FT. ABOVE SURFACE IN GOOD CONDITION	Vol. 21 P. 68A
1045	733455.641	4109369.151		1051+64.08	-43.91	12/4/2006	FD. 5/8" IRON REBAR W/ 1 1/4" PLASTIC CAP STAMPED "BEEDLE LS 2798" 0.4 FT. BELOW SURFACE IN GOOD CONDITION	Vol. 21 P. 68A



SI FEET OREGON DEPARTMENT OF TRANSPORTATION
 HORIZONTAL CONTROL, RECOVERY AND RETRACEMENT MAP
 OR 38: ELKTON SLIDE - HANCOCK MOUNTAIN ROAD PAVING
 UMPQUA HWY. NO. 45, OR 38, M.P. 31.74 - 38.09
 DOUGLAS COUNTY
 FILE:13802RW.DGN MODEL:SHEETS

FOR ODOT REGION 3
 3500 NW. STEWART PKWY.
 ROSEBURG, OR. 97470
 AUGUST 3, 2010
 SCALE: 1" = 100'
 SHEET 6 OF 9