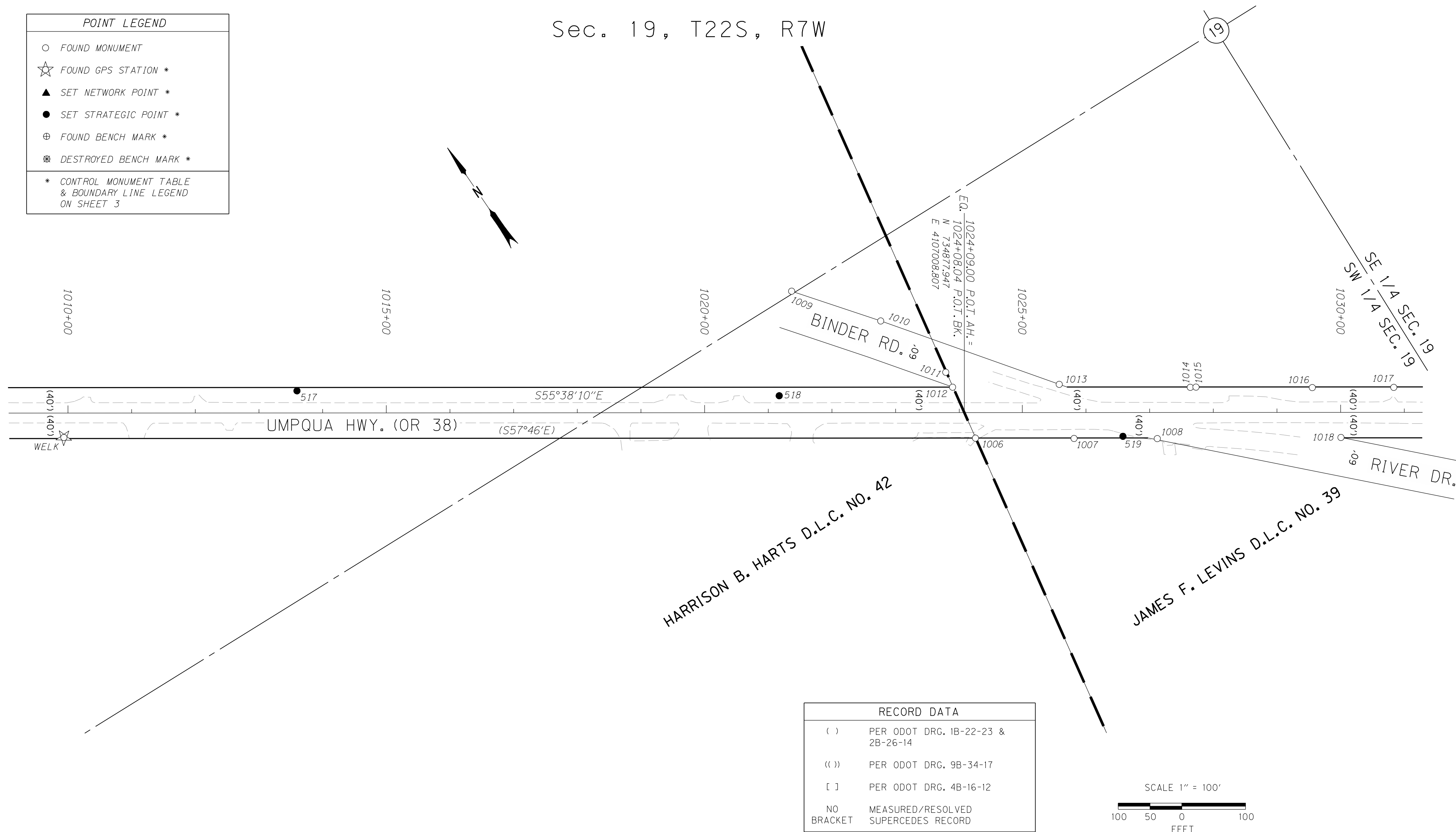
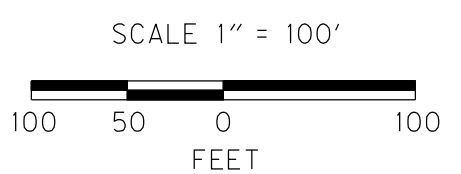


Sec. 19, T22S, R7W

POINT LEGEND	
○	FOUND MONUMENT
☆	FOUND GPS STATION *
▲	SET NETWORK POINT *
●	SET STRATEGIC POINT *
⊕	FOUND BENCH MARK *
⊗	DESTROYED BENCH MARK *
* CONTROL MONUMENT TABLE & BOUNDARY LINE LEGEND ON SHEET 3	



RECORD DATA	
()	PER ODOT DRG. 1B-22-23 & 2B-26-14
(())	PER ODOT DRG. 9B-34-17
[]	PER ODOT DRG. 4B-16-12
NO	MEASURED/RESOLVED
BRACKET	SUPERCEDES RECORD



RECOVERED MONUMENTS

NOTE: OFFSETS WITH A - (MINUS) ARE LEFT, WITHOUT ARE RIGHT

PT. ID.	LDP NORTHING	LDP EASTING	ELEV.	STATION	OFFSET	DATE	DESCRIPTION	REFERENCE
1006	734834.944	4107000.484		1024+26.40	40.20	12/6/2006	FD 1/4" X 1 5/8" IRON BAR 0.7 FT. BELOW SURFACE IN GOOD CONDITION	M 10-56
1007	734747.061	4107127.978		1025+81.25	40.78	12/6/2006	FD. 5/8" IRON REBAR 0.1 FT. ABOVE SURFACE IN GOOD CONDITION	M 78-10
1008	734673.009	4107235.757		1027+12.02	41.07	12/4/2006	FD. 5/8" IRON REBAR 0.5 FT. BELOW A.C. SURFACE BENT SOUTH TIED WHERE ENTERS GROUND IN POOR CONDITION	M 78-10
1009	735188.614	4106892.656				12/6/2006	FD. 1" BOLT WITH A 1 5/8" NUT 0.3 FT. BELOW SURFACE IN GOOD CONDITION	M 12-35
1010	735070.986	4106981.682				12/4/2006	FD. 3/4" I.D. IRON PIPE FLUSH W/ SURFACE IN FAIR CONDITION	M 12-35
1011	734946.765	4107020.460		1023+78.82	-63.38	12/6/2006	FD. 1 1/4" O.D. IRON PIPE WITH 90 DEGREE ELBOW FITTIN ON TOP 0.5 FT BELOW SURFACE IN GOOD CONDITION	M 10-54
1012	734921.324	4107016.091		1023+89.57	-39.92	12/6/2006	FD. 3/4" I.D. IRON PIPE 0.5 FT. BELOW SURFACE IN GOOD CONDITION	M 10-54
1013	734830.351	4107156.802		1025+58.03	-44.25	12/6/2006	FD. 5/8" IRON REBAR 0.5 FT. ABOVE SURFACE IN GOOD CONDITION	M 104-73
1014	734710.238	4107324.028		1027+63.87	-39.49	12/6/2006	FD. 1 3/4" AXLE SHAFT 0.5 FT. BELOW SURFACE IN GOOD CONDITION	M 10-58
1015	734705.474	4107331.629		1027+72.83	-39.84	12/6/2006	FD. 3/4" IRON ROD 0.8 FT. ABOVE SURFACE IN FAIR CONDITION	M 10-53
1016	734601.656	4107481.946		1029+55.51	-38.99	12/4/2006	FD. 1/2" IRON REBAR 0.9 FT. ABOVE SURFACE IN GOOD CONDITION	M 32-45
1017	734529.626	4107587.742		1030+83.50	-39.25	12/4/2006	FD. 1/2" IRON REBAR FLUSH W/ SURFACE BENT SOUTH TIED WHERE ENTERS GROUND IN POOR CONDITION	M 32-45
1018	734511.542	4107474.805		1030+00.48	39.43	12/4/2006	FD. 3/4" IRON ROD 0.3 FT. ABOVE SURFACE BENT WEST TIED WHERE ENTERS GROUND IN POOR CONDITION	M 12-39

SI FEET OREGON DEPARTMENT OF TRANSPORTATION
 HORIZONTAL CONTROL, RECOVERY AND RETRACEMENT MAP
 OR 38: ELKTON SLIDE - HANCOCK MOUNTAIN ROAD PAVING
 UMPQUA HWY. NO. 45, OR 38, M.P. 31.74 - 38.09
 DOUGLAS COUNTY
 FILE:13802RW.DGN MODEL:SHEETS

FOR ODOT REGION 3
 3500 NW. STEWART PKWY.
 ROSEBURG, OR. 97470

AUGUST 3, 2010
 SCALE: 1" = 100'
 SHEET 5 OF 9