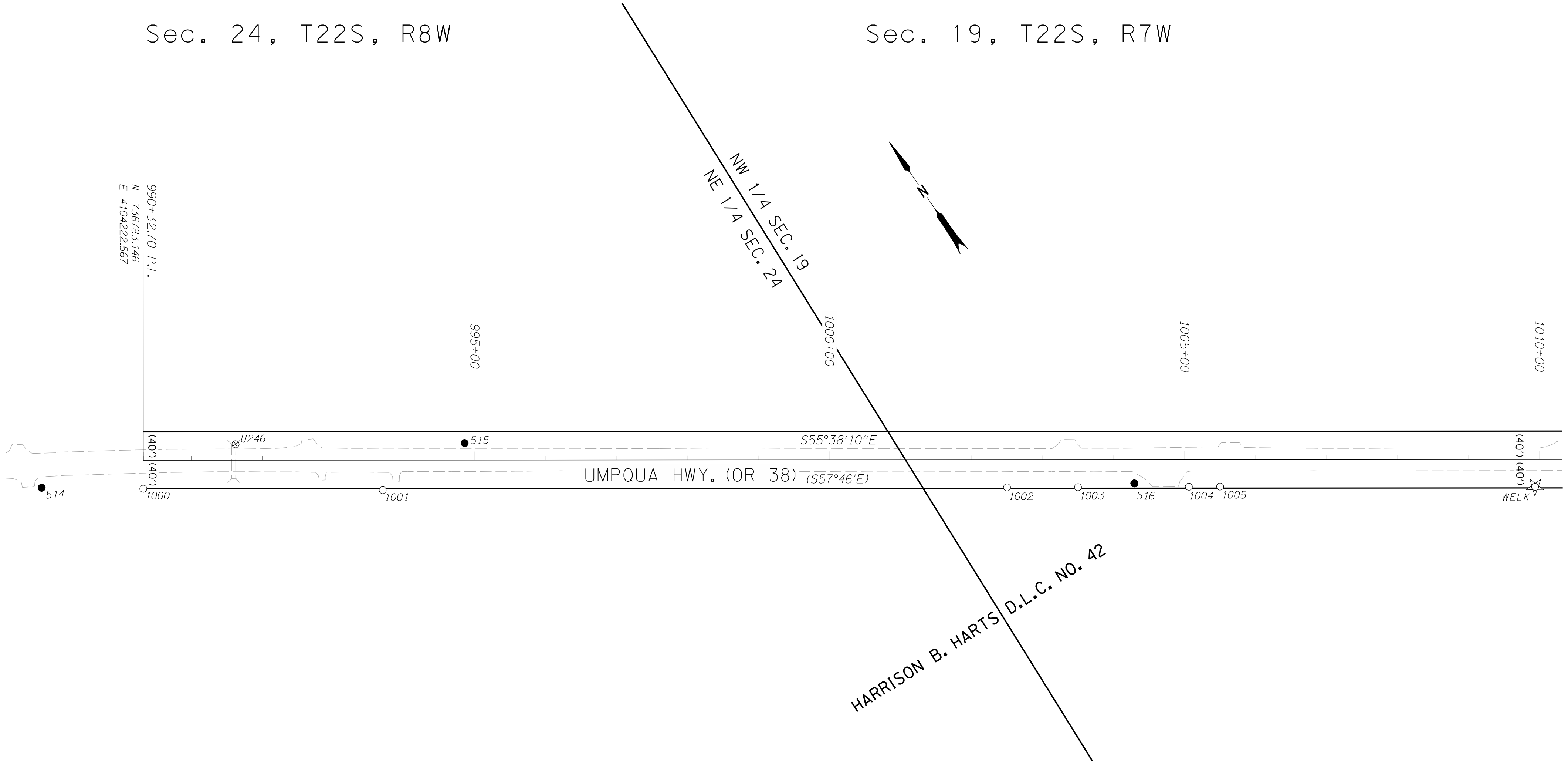


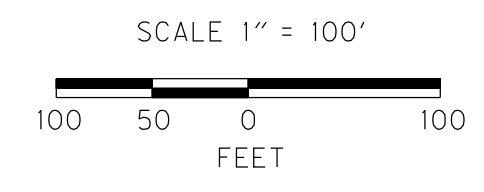
Sec. 24, T22S, R8W

Sec. 19, T22S, R7W



POINT LEGEND	
○	FOUND MONUMENT
☆	FOUND GPS STATION *
▲	SET NETWORK POINT *
●	SET STRATEGIC POINT *
⊕	FOUND BENCH MARK *
⊗	DESTROYED BENCH MARK *
* CONTROL MONUMENT TABLE & BOUNDARY LINE LEGEND ON SHEET 3	

RECORD DATA	
()	PER ODOT DRG. 1B-22-23 & 2B-26-14
(())	PER ODOT DRG. 9B-34-17
[]	PER ODOT DRG. 4B-16-12
NO BRACKET	MEASURED/RESOLVED SUPERCEDES RECORD



RECOVERED MONUMENTS

NOTE: OFFSETS WITH A - (MINUS) ARE LEFT, WITHOUT ARE RIGHT

PT. ID.	LDP NORTHING	LDP EASTING	ELEV.	STATION	OFFSET	DATE	DESCRIPTION	REFERENCE
1000	736750.128	4104199.989		990+32.70	40.00	12/4/2006	FD. 5/8" IRON ROD 0.2 FT. BELOW SURFACE BENT NE TIED WHERE ENTERS GROUND IN POOR CONDITION R/W STA. 990+32.7 P.C. 40' RT.	DRG 1B-22-23
1001	736557.997	4104477.174		993+69.96	42.14	12/5/2006	FD. 5/8" IRON ROD WITH GROUND CLAMP ATTACHED 0.3 FT. BELOW SURFACE IN GOOD CONDITION	CS 52/56
1002	736064.300	4105205.090		1002+49.49	38.80	12/4/2006	FD. 5/8" IRON REBAR W/ 1 1/4" PLASTIC CAP STAMPED "SWEEDEN LS 2752" 0.3 FT. ABOVE SURFACE IN GOOD CONDITION	M 141-47
1003	736008.082	4105287.829		1003+49.52	38.51	12/6/2006	FD. 5/8" IRON REBAR W/ 1 1/4" PLASTIC CAP STAMPED "LS 1076" 0.5 FT. BELOW SURFACE IN GOOD CONDITION	M 113-26
1004	735920.374	4105417.049		1005+05.70	37.97	12/4/2006	FD. 5/8" IRON REBAR W/ 1 1/4" PLASTIC CAP STAMPED "LS 1076" FLUSH W/ SURFACE IN GOOD CONDITION	M 113-26
1005	735895.691	4105453.468		1005+49.69	37.79	12/4/2006	FD. 5/8" IRON REBAR W/ 1 1/4" PLASTIC CAP STAMPED "LS 660" FLUSH W/ SURFACE IN GOOD CONDITION	1996-0065

SI FEET OREGON DEPARTMENT OF TRANSPORTATION
 HORIZONTAL CONTROL, RECOVERY AND RETRACEMENT MAP
 OR 38: ELKTON SLIDE - HANCOCK MOUNTAIN ROAD PAVING
 UMPQUA HWY. NO. 45, OR 38, M.P. 31.74 - 38.09
 DOUGLAS COUNTY
 FILE:13802RW.DGN MODEL:SHEETS

FOR ODOT REGION 3
 3500 NW. STEWART PKWY.
 ROSEBURG, OR. 97470

AUGUST 3, 2010
 SCALE: 1" = 100'
 SHEET 4 OF 9