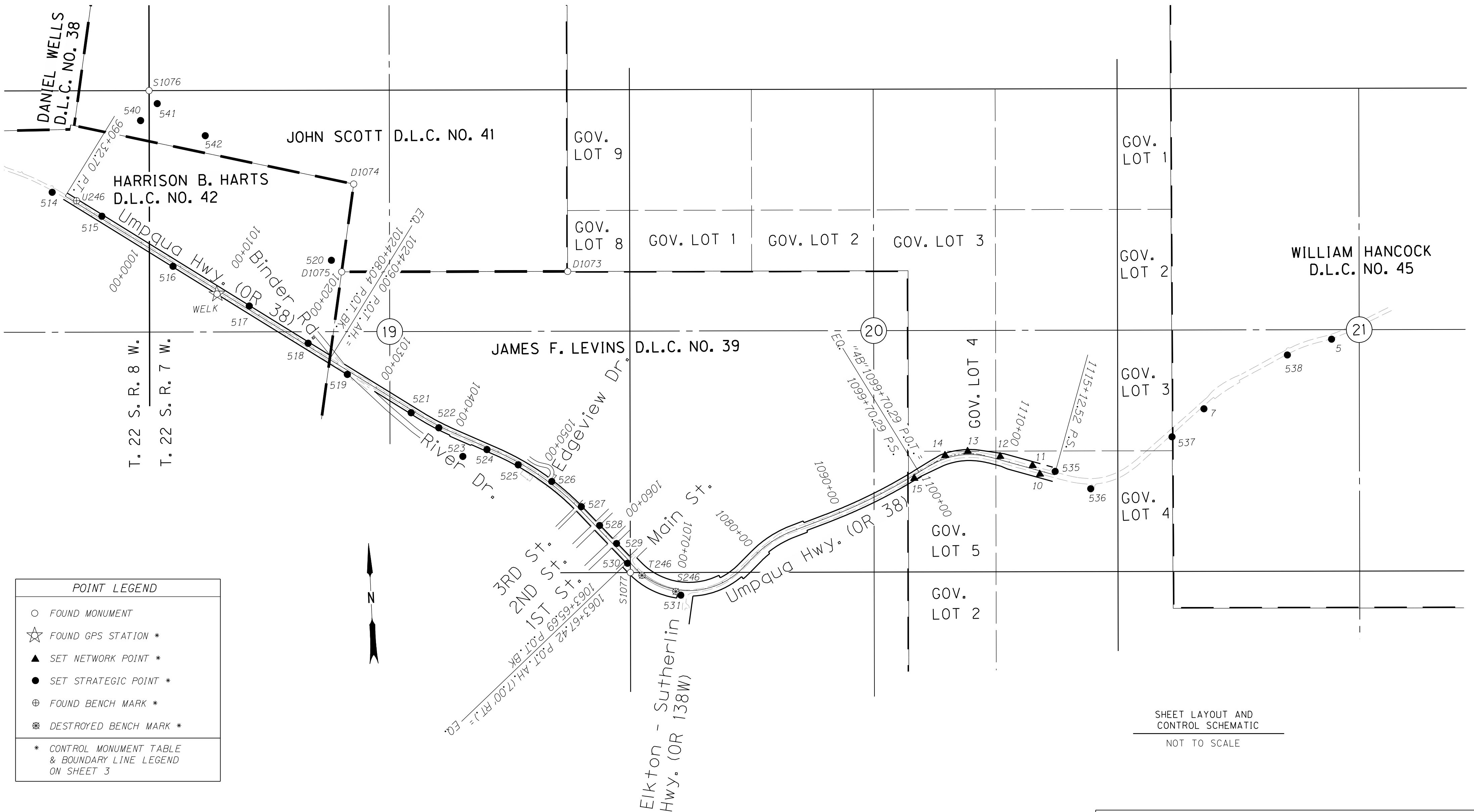


Sec. 24, T22S, R8W  
 Sec. 19, 20, 21, 29, 30, T22S, R7W



POINT LEGEND	
○	FOUND MONUMENT
☆	FOUND GPS STATION *
▲	SET NETWORK POINT *
●	SET STRATEGIC POINT *
⊕	FOUND BENCH MARK *
⊗	DESTROYED BENCH MARK *
* CONTROL MONUMENT TABLE & BOUNDARY LINE LEGEND ON SHEET 3	



SHEET LAYOUT AND CONTROL SCHEMATIC  
 NOT TO SCALE

RECOVERED MONUMENTS (NOT SHOWN ON INDIVIDUAL SHEETS)

NOTE: OFFSETS WITH A - (MINUS) ARE LEFT, WITHOUT ARE RIGHT

PT. ID.	LDP NORTHING	LDP EASTING	STATION	OFFSET	DATE	DESCRIPTION	REFERENCE
D1073	735713.620	4109634.970			12/5/2006	FD. 3 1/4" BRASS DISK MOUNTED ON A 2 1/4" IRON PIPE STAMPED "U.S. DEPT. OF THE INTERIOR BUR. OF LAND MANAGEMENT UNLAWFULL TO DISTURB CADASTRIAL SURVEY T22S R7W C41 S19 C39 1977" 0.2 FT. ABOVE SURFACE IN GOOD CONDITION S.E. CORNER JOHN SCOTT DLC#41	VOL 40 P. 22-23
D1074	736769.707	4107358.075			12/5/2006	FD. 2 5/8" BRASS DISK MOUNTED ON A 1 3/4" IRON PIPE STAMPED "SEC 19 T22S R7W C42 C41 PLS 1039 1980" 0.1 FT. ABOVE SURFACE IN GOOD CONDITION N.E. CORNER HARRISON B. HART DLC#42	M 86-29
D1075	735822.629	4107183.189			12/5/2006	FD. 2 5/8" BRASS DISK MOUNTED ON A 1 3/4" IRON PIPE STAMPED "SEC 19 T22S R7W C42 C41 C39 PLS 1039 1980" 0.4 FT. ABOVE SURFACE IN GOOD CONDITION N.W. CORNER JAMES F. LEVINS DLC#39	M 86-29
S1076	737886.707	4105184.954			12/5/2006	FD. 3 1/8" BRASS DISK MOUNTED ON A 2 1/4" IRON PIPE STAMPED "U.S. DEPT. OF THE INTERIOR BUR. OF LAND MANAGEMENT UNLAWFULL TO DISTURB CADASTRIAL SURVEY T22S R8W R7W S13 S18 S24 S19 1977" 0.5 FT. ABOVE SURFACE IN GOOD CONDITION	VOL 40 P. 16-17

**SI FEET** OREGON DEPARTMENT OF TRANSPORTATION  
 HORIZONTAL CONTROL, RECOVERY AND RETRACEMENT MAP  
 OR 38: ELKTON SLIDE - HANCOCK MOUNTAIN ROAD PAVING  
 UMPQUA HWY. NO. 45, OR 38, M.P. 31.74 - 38.09  
 DOUGLAS COUNTY  
 FILE:13802RW.DGN MODEL:SHEETS

FOR ODOT REGION 3  
 3500 NW. STEWART PKWY.  
 ROSEBURG, OR. 97470

AUGUST 3, 2010  
 SHEET 2 OF 9