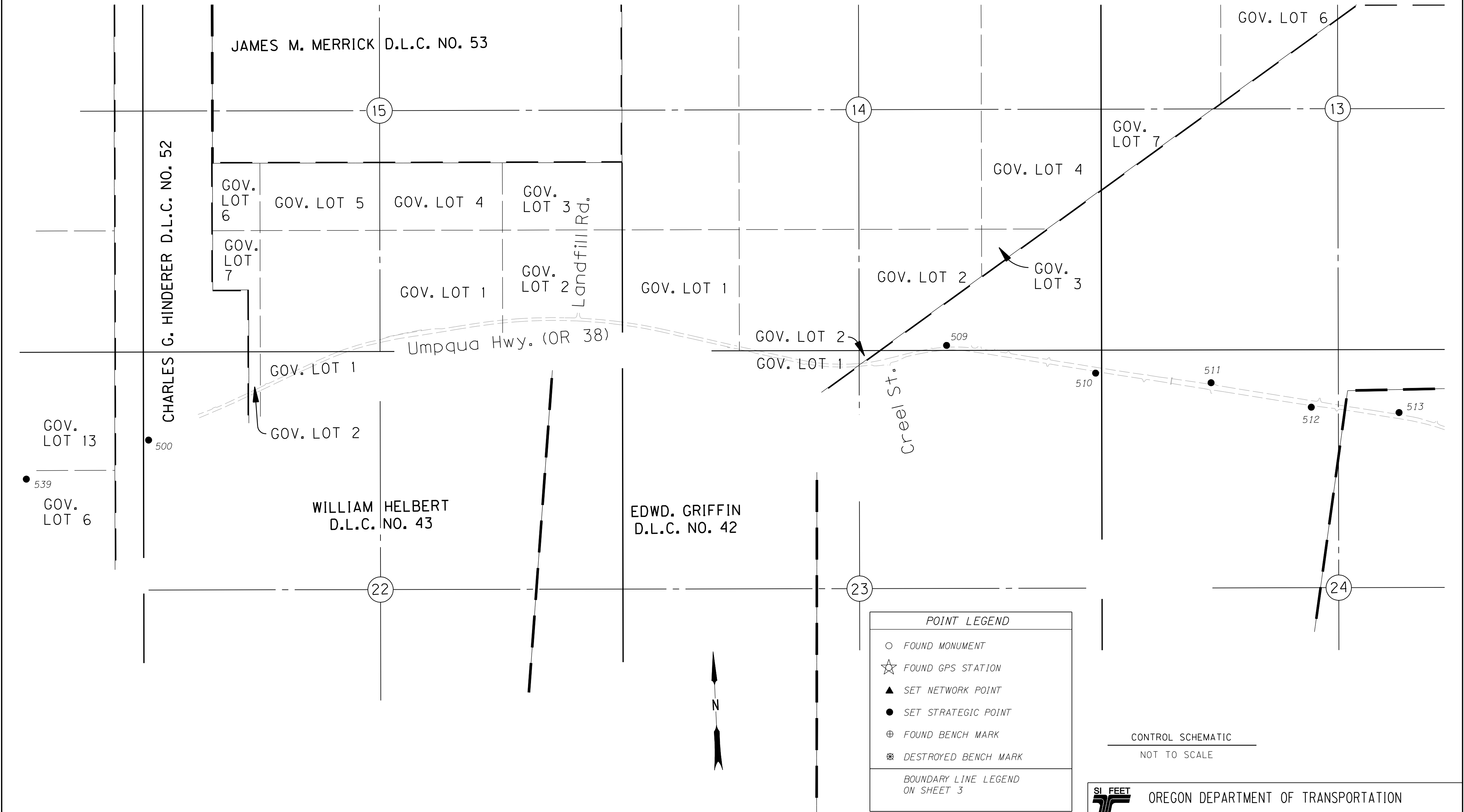



Sec. 14, 15, 21, 22, 23, 24, T22S, R8W



CONTROL MONUMENTS NOTE: OFFSETS WITH A - (MINUS) ARE LEFT, WITHOUT ARE RIGHT

PT. ID.	LDP NORTHING	LDP EASTING	ELEV.	STATION	OFFSET	DATE	DESCRIPTION	REFERENCE
500	737618.386	4089372.923				12/5/2006	SET 5/8" X 30" IRON REBAR W/ 1 1/2" BRASS CAP STAMPED "ODOT CONTROL 500" FLUSH W/ SURFACE	
509	738252.491	4098206.386				12/5/2006	SET 5/8" X 30" IRON REBAR W/ 1 1/2" BRASS CAP STAMPED "ODOT CONTROL 509" FLUSH W/ SURFACE	
510	737870.927	4099832.790				12/5/2006	SET 5/8" X 30" IRON REBAR W/ 1 1/2" BRASS CAP STAMPED "ODOT CONTROL 510" FLUSH W/ SURFACE	
511	737705.863	4101098.821				12/5/2006	SET 5/8" X 30" IRON REBAR W/ 1 1/2" BRASS CAP STAMPED "ODOT CONTROL 511" FLUSH W/ SURFACE	
512	737385.564	4102189.533				12/5/2006	SET 5/8" X 30" IRON REBAR W/ 1 1/2" BRASS CAP STAMPED "ODOT CONTROL 512" FLUSH W/ SURFACE	
513	737281.857	4103153.212				12/4/2006	SET 5/8" X 30" IRON REBAR W/ 1 1/2" BRASS CAP STAMPED "ODOT CONTROL 513" FLUSH W/ SURFACE	
539	737250.660	4088007.275				12/5/2006	SET 5/8" X 30" IRON REBAR W/ 1 1/2" BRASS CAP STAMPED "ODOT CONTROL 539" FLUSH W/ SURFACE	


OREGON DEPARTMENT OF TRANSPORTATION
 HORIZONTAL CONTROL, RECOVERY AND RETRACEMENT MAP
 OR 38: ELKTON SLIDE - HANCOCK MOUNTAIN ROAD PAVING
 UMPQUA HWY. NO. 45, OR 38, M.P. 31.74 - 38.09
 DOUGLAS COUNTY
 FILE:13802RW.DGN MODEL:SHEETS
 FOR ODOT REGION 3
 3500 NW. STEWART PKWY.
 ROSEBURG, OR. 97470
 AUGUST 3, 2010
 SHEET 1 OF 9