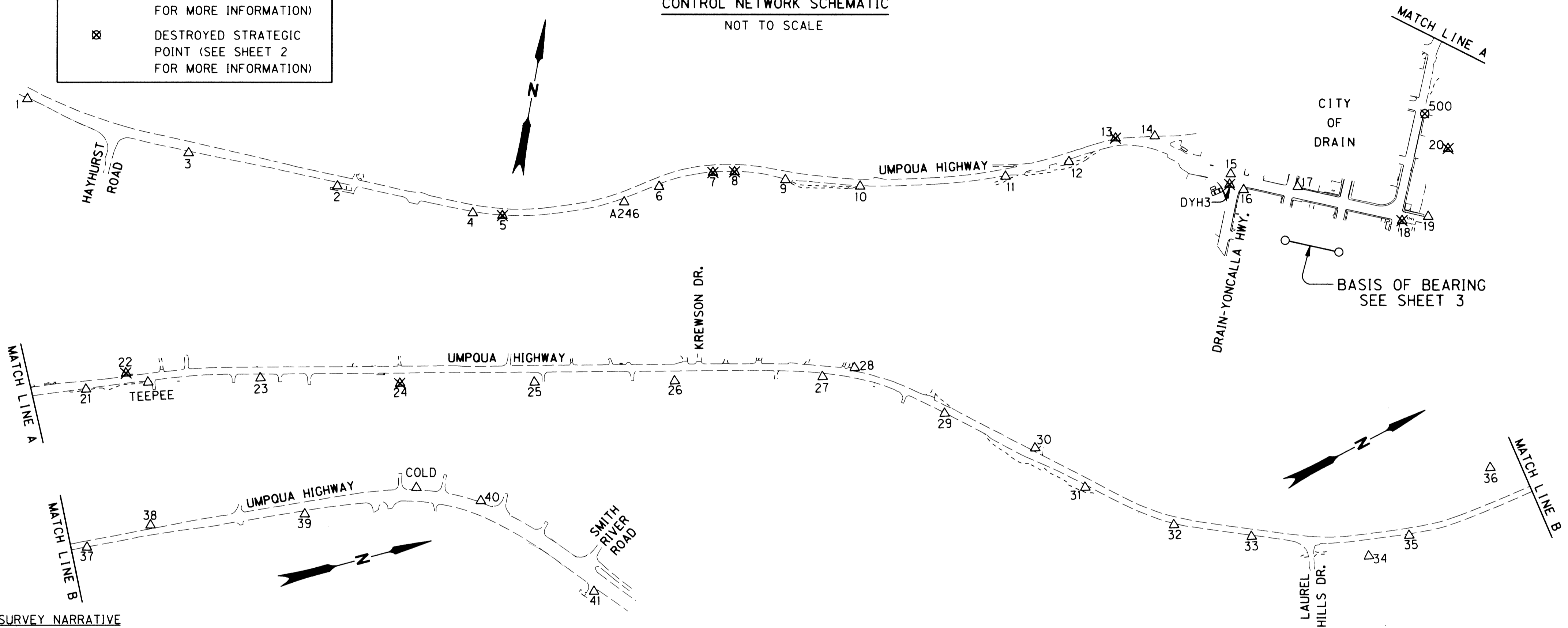


SECTIONS 4, 8, 9, 17 & 18, T. 22 S., R. 5 W., W.M.

FILED
 Date: 4-18-2006 By: [Signature]
 This survey consists of:
 Map: ST HWY 38-013A
 Narrative:
 Corner Rpt:
 DOUGLAS COUNTY SURVEYOR

LEGEND	
△	FOUND NETWORK POINT (SEE SHEET 2 FOR MORE INFORMATION)
✕	DESTROYED NETWORK POINT (SEE SHEET 2 FOR MORE INFORMATION)
⊗	DESTROYED STRATEGIC POINT (SEE SHEET 2 FOR MORE INFORMATION)

BASIS OF BEARING AND CONTROL NETWORK SCHEMATIC
 NOT TO SCALE



SURVEY NARRATIVE

THE PURPOSE OF THIS METRIC SURVEY WAS TO MONUMENT THE RIGHT OF WAY OF AN OREGON DEPARTMENT OF TRANSPORTATION (ODOT) PROJECT ON THE UMPQUA HIGHWAY (OR38) CALLED "OR38: HANCOCK CREEK - LAUREL HILLS DRIVE" USING RIGHT OF WAY MAP 10B-18-23.

THIS SURVEY UTILIZES ASSUMED METRIC COORDINATES. TO CONVERT THE METRIC COORDINATES, DISTANCES, AND STATIONING TO ENGLISH, DIVIDE BY 0.30480061 (OR, 1 METER = 3937 US SURVEY FEET / 1200).

THE BASIS OF BEARING, COORDINATES, ORIGINAL CONTROL NETWORK ACCURACIES, AND RESOLVED ALIGNMENTS FOR THIS SURVEY ARE TAKEN FROM FILED SURVEY ST. HWY. 38-010, (A-H) FILED JUNE 6, 2002 AT THE DOUGLAS COUNTY SURVEYOR'S OFFICE. THE ORIGINAL FIELD NOTES FOR THE SURVEY ARE ARCHIVED AT THE ODOT MAP AND PLAN CENTER IN SALEM IN BOOK*3828.

THE ORIGINAL CONTROL NETWORK POINTS WERE SEARCHED FOR AND NEW RIGHT OF WAY MONUMENTS WERE SET NOVEMBER 22 & 23 OF 2005. NETWORK POINT 19 WAS OCCUPIED AND NETWORK POINTS TEEPEE AND 16 WERE CHECKED FOR DISTANCE AND ORIENTATION AND THEN BACKSIGHTED IN ORDER TO SET THE NEW RIGHT OF WAY MONUMENTS.

A LEICA "TCA 1800" TOTAL STATION (SERIAL *418939) WAS USED TO SET THE RIGHT OF WAY MONUMENTS. THE LEICA TCA 1800 HAS THE FOLLOWING ACCURACY: STANDARD ANGULAR ERROR OF +/- 1 SECOND, AND A STANDARD DISTANCE ERROR OF +/- 2 MM, +/- 2 PPM.

THE ORIGINAL CONTROL NETWORK WAS ADJUSTED USING A LEAST SQUARES ROUTINE WITH LISCAD SOFTWARE. THIS ADJUSTMENT PRODUCED ANGULAR AND DISTANCE RESIDUALS (THE AMOUNT THE FIELD OBSERVED MEASUREMENTS WERE CHANGED DUE TO THE ADJUSTMENT). ANGULAR RESIDUALS: 94% WERE WITHIN 3 SECONDS, AND 100% WERE WITHIN 8 SECONDS. DISTANCE RESIDUALS: 100% WERE WITHIN 3 MM. THERE IS A 95% PROBABILITY THAT THE FINAL POSITIONS OF THE NETWORK POINTS ARE WITHIN THE ERROR ELLIPSES AS SHOWN ON THE "CONFIDENCE LEVEL LIMITS" TABLE.

REGISTERED PROFESSIONAL LAND SURVEYOR
 Marshall R. Wagstaff
 OREGON
 JANUARY 9, 2001
 MARSHALL R. WAGSTAFF
 49476LS
 EXPIRES 06/30/06

METRIC SURVEY OREGON DEPARTMENT OF TRANSPORTATION
 RIGHT-OF-WAY BOUNDARY MONUMENTATION MAP
 OR38: HANCOCK CREEK - LAUREL HILLS DRIVE
 UMPQUA HIGHWAY
 DOUGLAS COUNTY
 KEY NO. 10966

FOR ODOT REGION 3
 3500 NW STEWART PKWY., STE. 164
 ROSEBURG, OR 97470

APRIL 14, 2006
 SHEET 1 OF 3