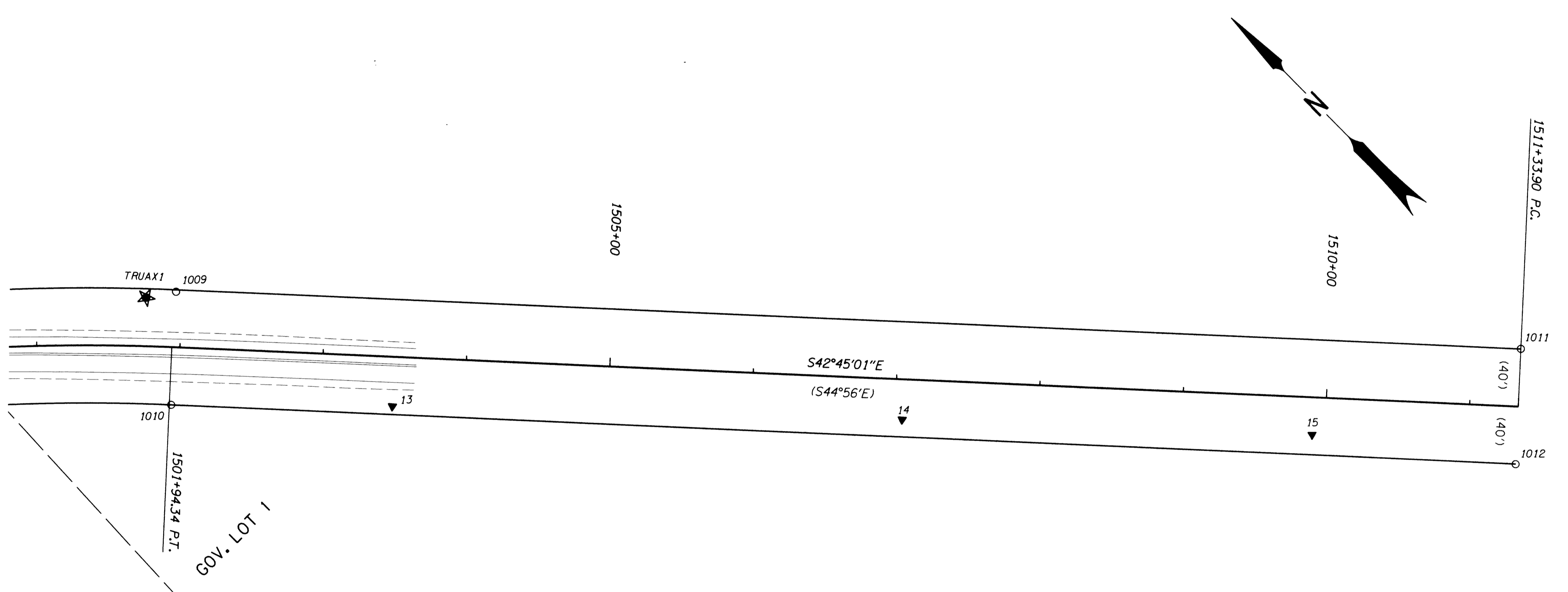


SECTION 16, T. 22 S., R. 6 W., W.M.

FILED
 Date: 7-27-2005 By: JC
 This survey consists of:
 Map: 54 HWY 38-012 A-G
 Narratives:
 Corner Rpt:
 DOUGLAS COUNTY
 SURVEYOR



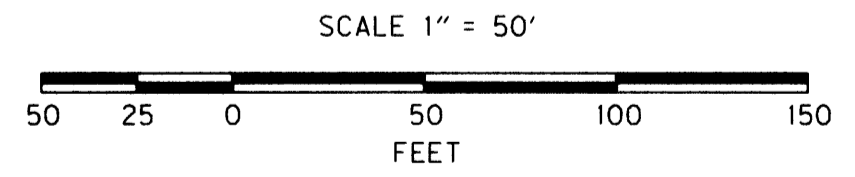
NW1/4NW1/4 SECTION 16
 GOV. LOT 1

LEGEND

- FOUND MONUMENT
- ▲ SET NETWORK POINT
- ★ SET GPS POINT
- RIGHT-OF-WAY

(RECORD FROM RW MAP 1B-20-15)

REGISTERED PROFESSIONAL LAND SURVEYOR
Marshall R. Wagstaff
 OREGON
 JANUARY 9, 2001
 MARSHALL R. WAGSTAFF
 45476LS
 EXPIRES 06/30/06



NOTE: OFFSETS WITH A - (MINUS) ARE LEFT, WITHOUT ARE RIGHT FOR CONTROL MONUMENTS SEE SHEET 2

RECOVERED MONUMENT LIST

PT. NO.	LDP NORTHING	LDP EASTING	ELEV.	STATION	OFFSET	DATE	DESCRIPTION	REF.
1009	741255.553	4148352.988		1501+95.58	-38.62	10/5/2004	FOUND 1/2" IRON ROD 0.4' BELOW SURFACE GOOD CONDITION ODOT R/W STA 1501+95.1 P.T. 40' LT.	RWM 1B-20-15
1010	741202.127	4148295.304		1501+95.66	40.00	10/5/2004	FOUND 1/2" IRON ROD 0.7' BELOW SURFACE FAIR CONDITION ODOT R/W STA 1501+95.1 P.T. 40' RT.	RWM 1B-20-15
1011	740567.470	4148991.025		1511+33.96	-40.07	10/5/2004	FOUND 1/2" IRON ROD 0.1' ABOVE SURFACE GOOD CONDITION ODOT R/W STA 1511+33.9 P.C. 40' LT.	RWM 1B-20-15
1012	740513.146	4148932.099		1511+33.85	40.07	10/5/2004	FOUND 1/2" IRON ROD 0.4' BELOW SURFACE GOOD CONDITION ODOT R/W STA 1511+33.9 P.C. 40' RT.	RWM 1B-20-15

SHEET OREGON DEPARTMENT OF TRANSPORTATION
 HORIZONTAL CONTROL, RECOVERY AND RETRACEMENT MAP
 OR38: TRUAX SLIDE REPAIR
 UMPQUA HIGHWAY (HIGHWAY 38)
 DOUGLAS COUNTY

FOR ODOT REGION 3
 3500 STEWART PARKWAY
 ROSEBURG, OR 97470

JULY 22, 2005
 SHEET 7 OF 7