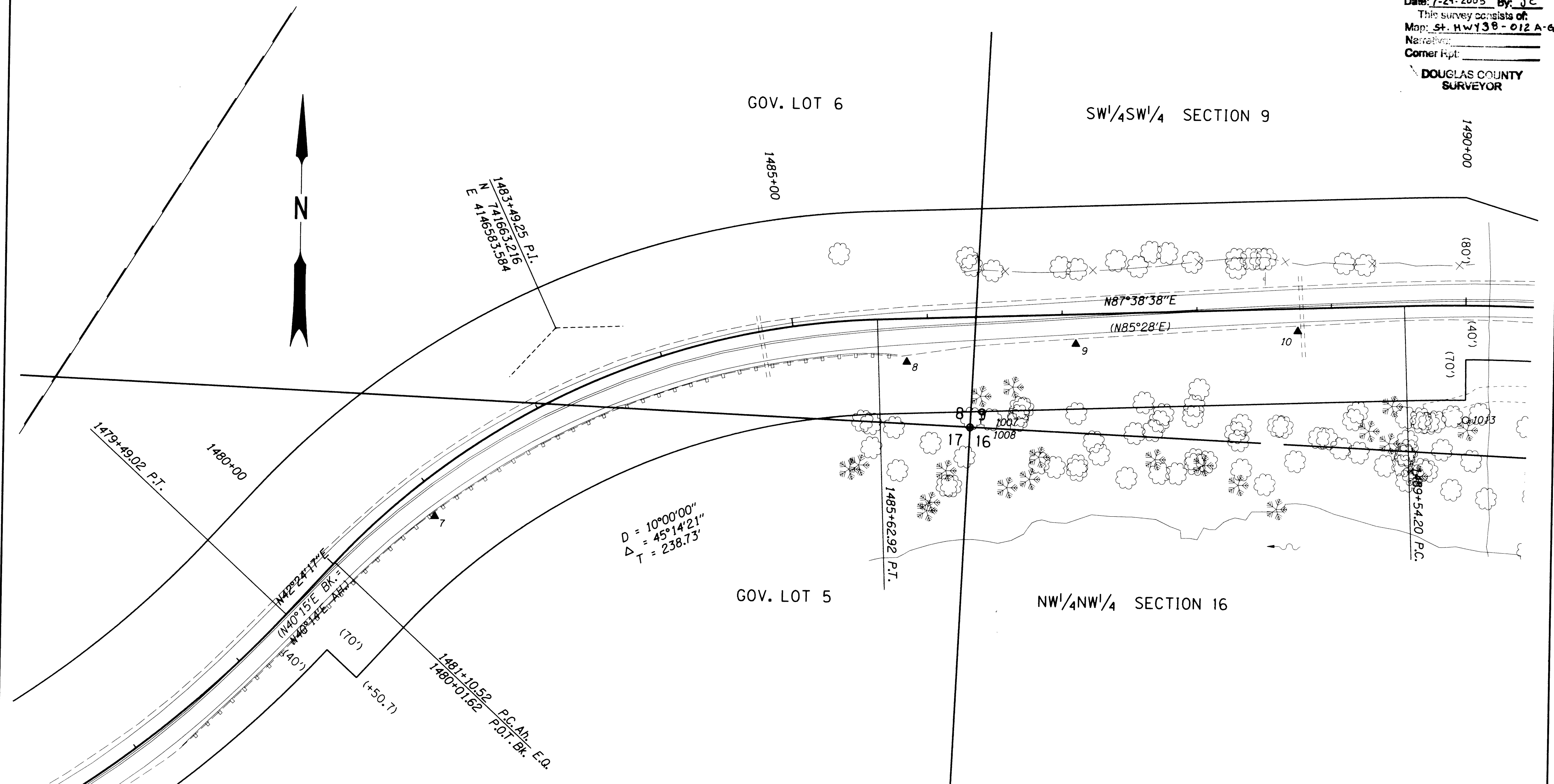


SECTIONS 8, 9, 16 & 17, T. 22 S. R. 6 W., W.M.

FILED
 Date: 7-29-2005 By: J.C.
 This survey consists of:
 Map: St. HWY 38-012 A-6
 Narrative:
 Corner Rpt:
 DOUGLAS COUNTY
 SURVEYOR

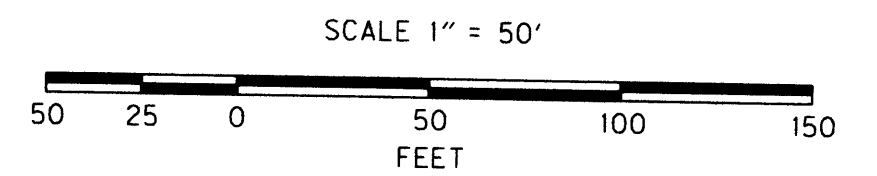


LEGEND

- FOUND MONUMENT
- ▲ SET NETWORK POINT
- RIGHT-OF-WAY

(RECORD FROM RW MAP 1B-20-15)

REGISTERED
 PROFESSIONAL
 LAND SURVEYOR
Marshall R. Wagstaff
 OREGON
 JANUARY 9, 2001
 MARSHALL R. WAGSTAFF
 49476LS
 EXPIRES 06/30/06



RECOVERED MONUMENT LIST

PT. NO.	LDP NORTHING	LDP EASTING	ELEV.	STATION	OFFSET	DATE	DESCRIPTION	REF.
1007	741594.491	4146892.009		1486+29.52	81.35	10/4/2004	FOUND 1/2" OD. METAL PIPE W/ 2 1/2" BRASS DISK 1.0' ABOVE SURFACE GOOD CONDITION SECTION CORNER 8, 9, 17 & 16	
1008	741594.197	4146891.932		1486+29.44	81.64	10/5/2004	FOUND 3/8" DIA. STEEL BOLT W/ 1/4" SQ. HEAD 0.5' ABOVE SURFACE GOOD CONDITION	
1013	741605.656	4147259.783		1490+00.17	84.62	10/13/2004	FOUND 1/2" IRON ROD FLUSH W/ SURFACE LEANS SOUTH STATE HWY R/W STA 1490+00 70' RT.	RWM 1B-20-15

NOTE: OFFSETS WITH A - (MINUS) ARE LEFT, WITHOUT ARE RIGHT
 FOR CONTROL MONUMENTS SEE SHEET 2

SHEET OREGON DEPARTMENT OF TRANSPORTATION
 HORIZONTAL CONTROL, RECOVERY AND RETRACEMENT MAP
 OR38: TRUAX SLIDE REPAIR
 UMPQUA HIGHWAY (HIGHWAY 38)
 DOUGLAS COUNTY

FOR ODOT REGION 3
 3500 STEWART PARKWAY
 ROSEBURG, OR 97470

JULY 22, 2005
 SHEET 5 OF 7

ST. HWY 38-012 E