

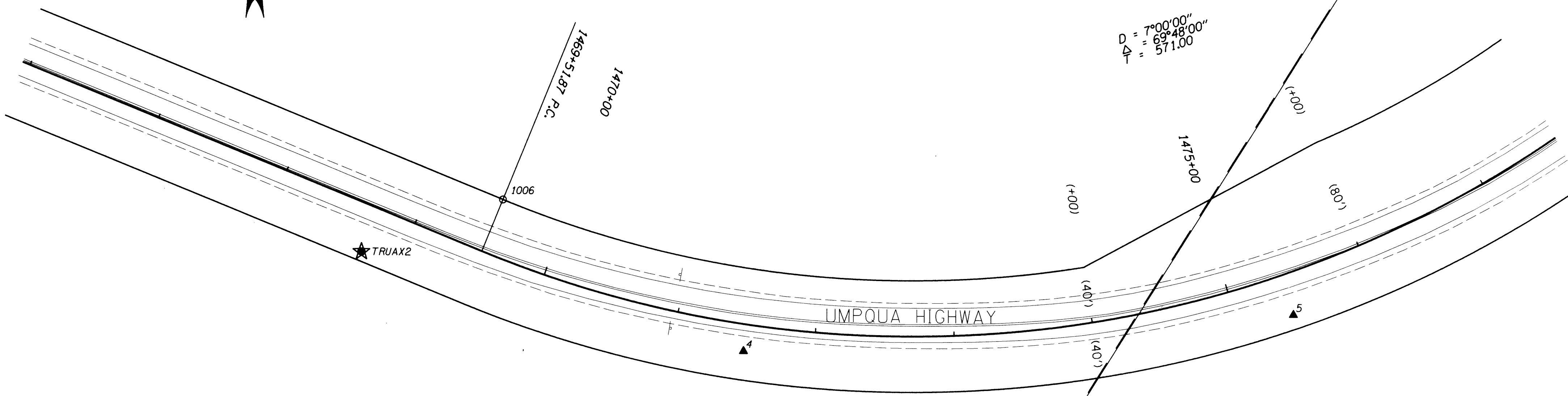
SECTION 8 & 17, T. 22 S., R. 6 W., W.M.

SECTION 8  
 SECTION 17

JOSEPH DAISLEY  
 D.L.C. NO. 37



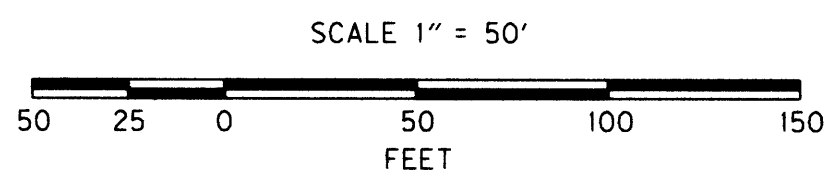
$D = 7^{\circ}00'00''$   
 $\Delta = 69^{\circ}48'00''$   
 $T = 571.00$



**LEGEND**

- FOUND MONUMENT
- ▲ SET NETWORK POINT
- ★ SET GPS POINT
- RIGHT-OF-WAY

(RECORD FROM RW MAP 1B-20-15)



REGISTERED PROFESSIONAL LAND SURVEYOR  
*Marshall R. Wagstaff*  
 OREGON  
 JANUARY 9, 2001  
 MARSHALL R. WAGSTAFF  
 49476LS  
 EXPIRES 06/30/06

**SHEET** OREGON DEPARTMENT OF TRANSPORTATION  
 HORIZONTAL CONTROL, RECOVERY AND RETRACEMENT MAP  
 OR38: TRUAX SLIDE REPAIR  
 UMPQUA HIGHWAY (HIGHWAY 38)  
 DOUGLAS COUNTY

NOTE: OFFSETS WITH A - (MINUS) ARE LEFT, WITHOUT ARE RIGHT FOR CONTROL MONUMENTS SEE SHEET 2

RECOVERED MONUMENT LIST

PT. NO.	LDP NORTHING	LDP EASTING	ELEV.	STATION	OFFSET	DATE	DESCRIPTION	REF.
1006	741279.293	4145488.517		1469+51.87	-40.00	9/30/2004	FOUND 1/2" IRON ROD 0.1' ABOVE SURFACE POOR CONDITION O.D.O.T. R/W STA 1469+53.6 PC 40' LT	RWM 1B-20-15

FOR ODOT REGION 3  
 3500 STEWART PARKWAY  
 ROSEBURG, OR 97470

JULY 22, 2005  
 SHEET 4 OF 7