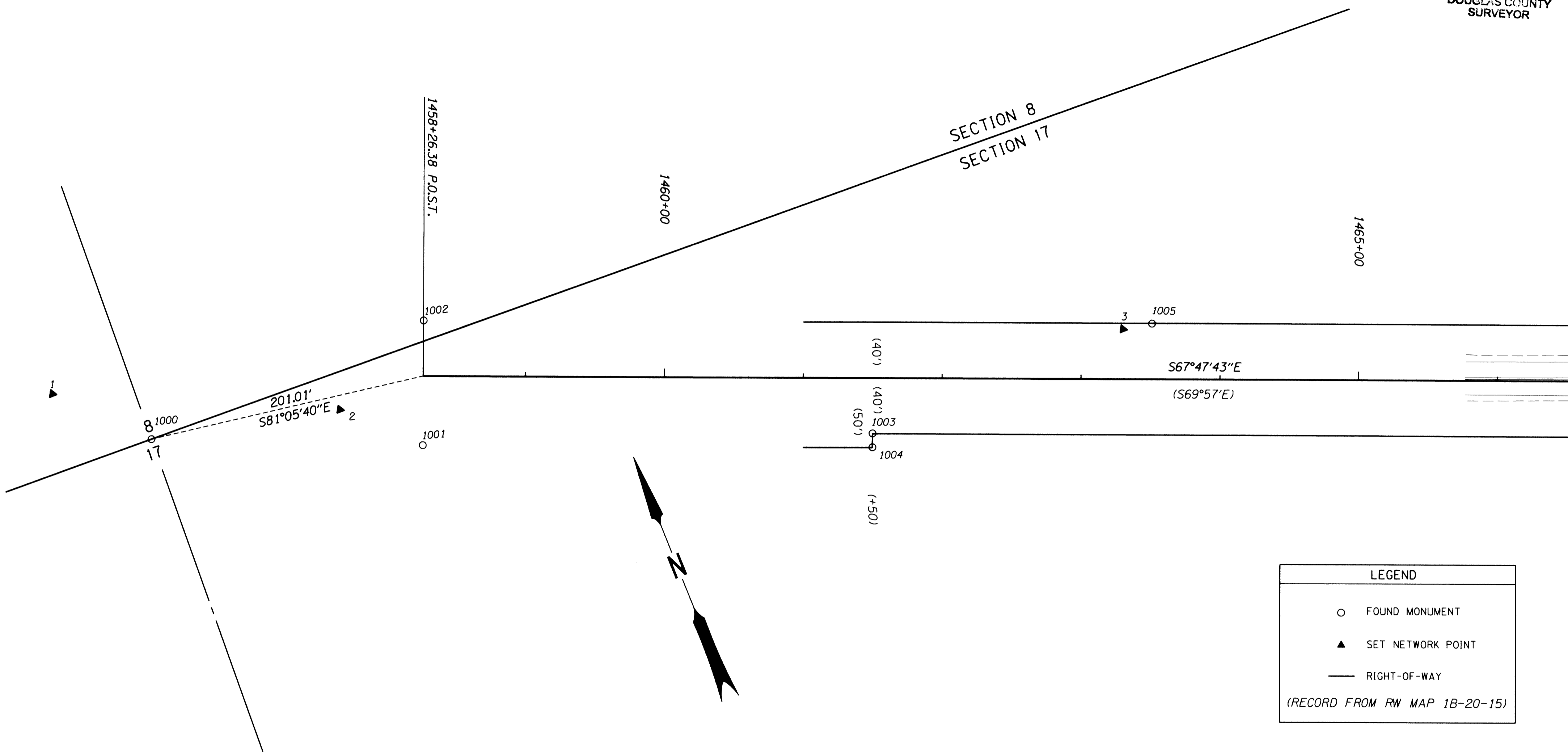


SECTION 8 & 17, T. 22 S., R. 6 W., W.M.

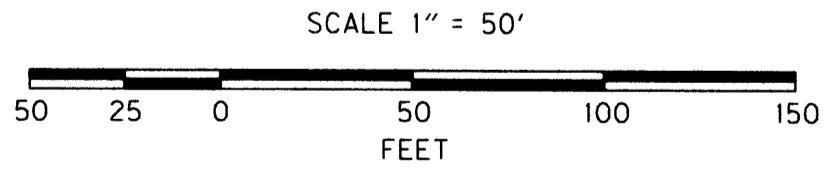
FILED  
 Date: 7-29-2005 By: JC  
 This survey consists of:  
 Map: ST. HWY 38-012 A-G  
 Name: \_\_\_\_\_  
 Corner Rpt: \_\_\_\_\_  
 DOUGLAS COUNTY  
 SURVEYOR



**LEGEND**

- FOUND MONUMENT
- ▲ SET NETWORK POINT
- RIGHT-OF-WAY

(RECORD FROM RW MAP 1B-20-15)



REGISTERED  
 PROFESSIONAL  
 LAND SURVEYOR  
*Marshall R. Wagstaff*  
 OREGON  
 JANUARY 9, 2001  
 MARSHALL R. WAGSTAFF  
 49476LS  
 EXPIRES 06/30/06

NOTE: OFFSETS WITH A - (MINUS) ARE LEFT, WITHOUT ARE RIGHT  
 FOR CONTROL MONUMENTS SEE SHEET 2

RECOVERED MONUMENT LIST

PT. NO.	LDP NORTHING	LDP EASTING	ELEV.	STATION	OFFSET	DATE	DESCRIPTION	REF.
1000	741698.724	4144232.784				9/30/2004	FOUND 2" METAL PIPE W/ 2 1/2" BRASS DISK FLUSH W/ SURFACE GOOD CONDITION 1/4 CORNER SECTION 8 & 17	
1001	741621.664	4144412.488		1458+26.26	49.67	9/30/2004	FOUND 1/2" IRON ROD 1.1' BELOW SURFACE GOOD CONDITION ODOT STA 1458+28.3 P.T. BK. = 1458+26.1 P.O.T. AH. LT.	RWM 1B-20-15
1002	741704.359	4144446.483		1458+26.48	-39.74	9/30/2004	FOUND 1/2" IRON ROD 0.4' ABOVE SURFACE GOOD CONDITION ODOT STA 1458+28.3 P.T. BK. = 1458+26.1 P.O.T. AH. RT.	RWM 1B-20-15
1003	741508.510	4144715.973		1461+50.00	39.74	9/30/2004	FOUND 1/2" IRON ROD 0.2' ABOVE SURFACE GOOD CONDITION ODOT STA 1461+50 40' RT.	RWM 1B-20-15
1004	741499.284	4144712.180		1461+49.97	49.72	9/30/2004	FOUND 1/2" IRON ROD 0.1' ABOVE SURFACE GOOD CONDITION ODOT STA 1461+50 50' RT.	RWM 1B-20-15
1005	741506.274	4144932.001		1463+50.85	-39.83	9/30/2004	FOUND 3/8" IRON ROD 1 1/4" PLASTIC CAP STAMPED "I.E. ENG." FLUSH W/ SURFACE GOOD CONDITION	CS M136-70

**SHEET** OREGON DEPARTMENT OF TRANSPORTATION  
 HORIZONTAL CONTROL, RECOVERY AND RETRACEMENT MAP  
 OR38: TRUAX SLIDE REPAIR  
 UMPQUA HIGHWAY (HIGHWAY 38)  
 DOUGLAS COUNTY

FOR ODOT REGION 3  
 3500 STEWART PARKWAY  
 ROSEBURG, OR 97470  
 JULY 22, 2005  
 SHEET 3 OF 7