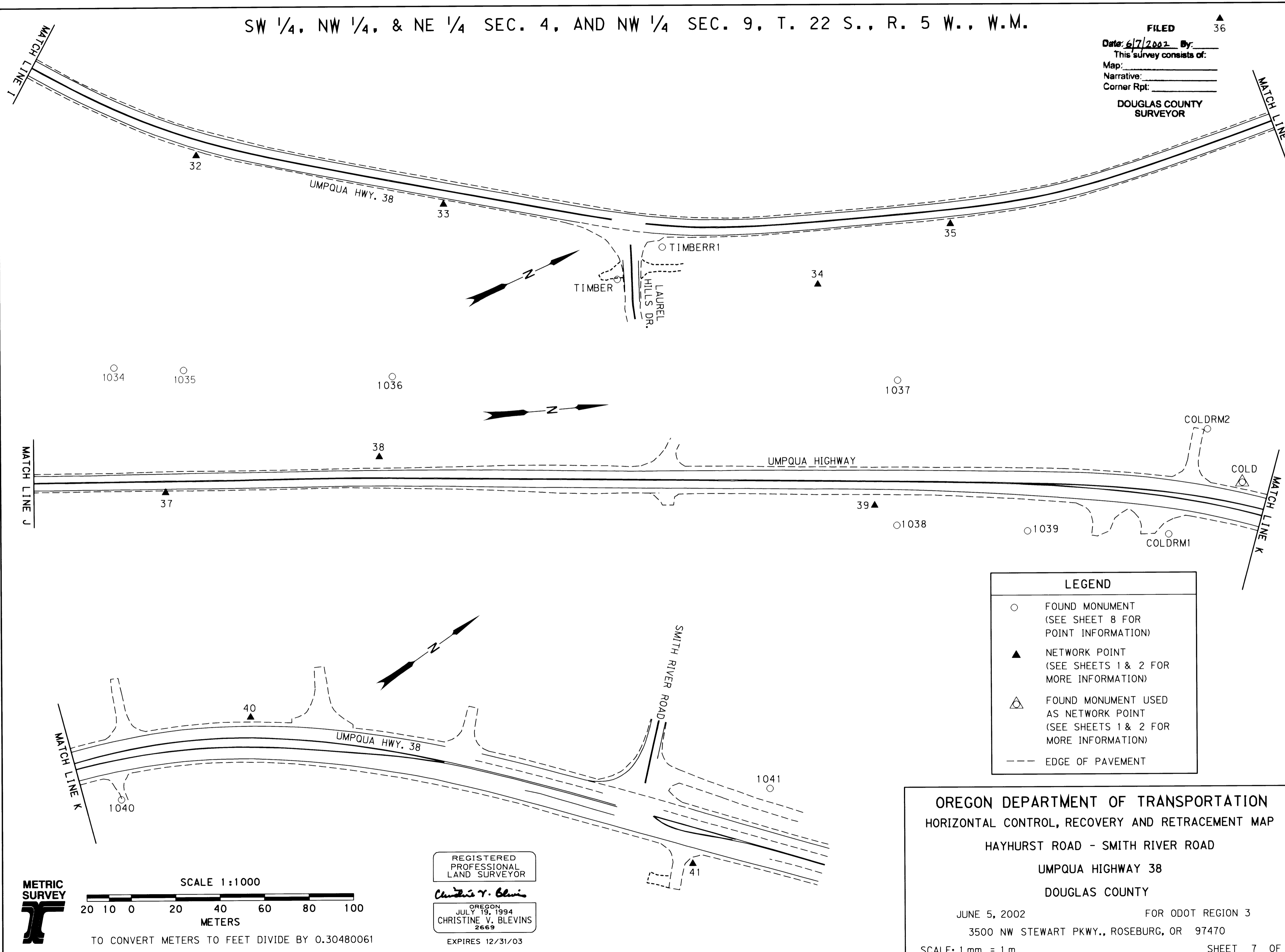


SW 1/4, NW 1/4, & NE 1/4 SEC. 4, AND NW 1/4 SEC. 9, T. 22 S., R. 5 W., W.M.

FILED ▲ 36

Date: 6/7/2002 By: _____
 This survey consists of:
 Map: _____
 Narrative: _____
 Corner Rpt: _____

DOUGLAS COUNTY SURVEYOR



LEGEND	
○	FOUND MONUMENT (SEE SHEET 8 FOR POINT INFORMATION)
▲	NETWORK POINT (SEE SHEETS 1 & 2 FOR MORE INFORMATION)
△	FOUND MONUMENT USED AS NETWORK POINT (SEE SHEETS 1 & 2 FOR MORE INFORMATION)
---	EDGE OF PAVEMENT

OREGON DEPARTMENT OF TRANSPORTATION
 HORIZONTAL CONTROL, RECOVERY AND RETRACEMENT MAP
 HAYHURST ROAD - SMITH RIVER ROAD
 UMPQUA HIGHWAY 38
 DOUGLAS COUNTY

JUNE 5, 2002 FOR ODOT REGION 3
 3500 NW STEWART PKWY., ROSEBURG, OR 97470

SCALE: 1 mm = 1 m SHEET 7 OF 8

METRIC SURVEY

SCALE 1:1000

METERS

TO CONVERT METERS TO FEET DIVIDE BY 0.30480061

REGISTERED PROFESSIONAL LAND SURVEYOR

Christine V. Blevins

OREGON
 JULY 19, 1994
 CHRISTINE V. BLEVINS
 2669

EXPIRES 12/31/03