

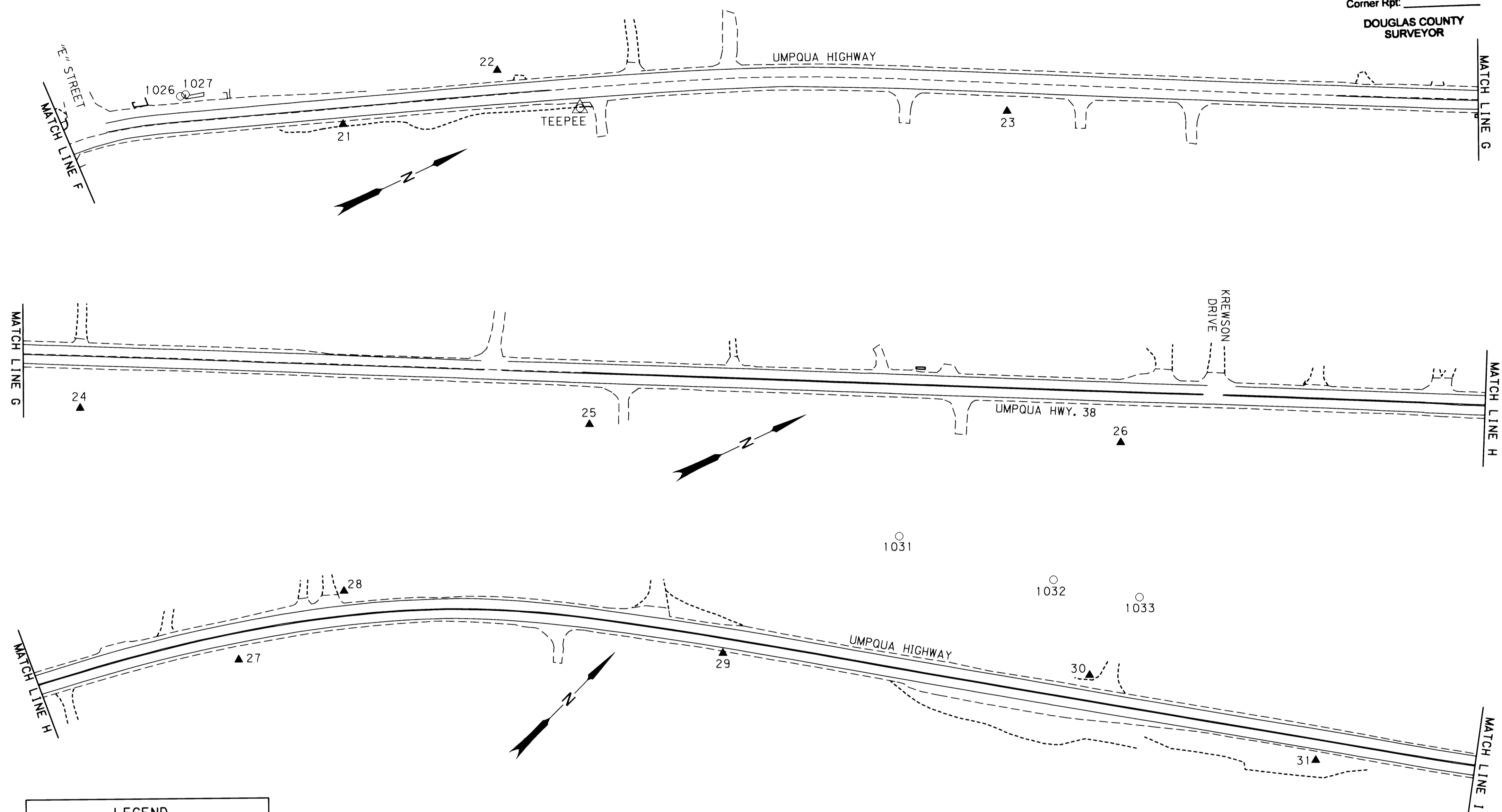
1028 SE 1/4 & NE 1/4 SEC. 8, AND NW 1/4 SEC. 9, T. 22 S., R. 5 W., W.M.

1029

1030

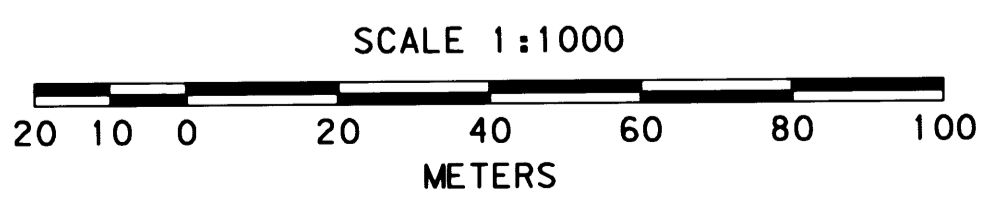
FILED  
 Date: 6/7/2002 By: JP  
 This survey consists of:  
 Map: \_\_\_\_\_  
 Narrative: \_\_\_\_\_  
 Corner Rpt: \_\_\_\_\_

DOUGLAS COUNTY  
 SURVEYOR



LEGEND	
○	FOUND MONUMENT (SEE SHEET 8 FOR POINT INFORMATION)
▲	NETWORK POINT (SEE SHEETS 1 & 2 FOR MORE INFORMATION)
△	FOUND MONUMENT USED AS NETWORK POINT (SEE SHEETS 1 & 2 FOR MORE INFORMATION)
---	EDGE OF PAVEMENT

REGISTERED  
 PROFESSIONAL  
 LAND SURVEYOR  
*Christine V. Blevins*  
 OREGON  
 JULY 19, 1994  
 CHRISTINE V. BLEVINS  
 2669  
 EXPIRES 12/31/03



TO CONVERT METERS TO FEET DIVIDE BY 0.30480061

OREGON DEPARTMENT OF TRANSPORTATION  
 HORIZONTAL CONTROL, RECOVERY AND RETRACEMENT MAP  
 HAYHURST ROAD - SMITH RIVER ROAD  
 UMPQUA HIGHWAY 38  
 DOUGLAS COUNTY

JUNE 5, 2002 FOR ODOT REGION 3  
 3500 NW STEWART PKWY., ROSEBURG, OR 97470  
 SCALE: 1 mm = 1 m SHEET 6 OF 8

ST. HWY. 38-010F