

NW 1/4 & NE 1/4 SECTION 17, AND SE 1/4 SECTION 8, T. 22 S., R. 5 W., W.M.

RETRACEMENT NARRATIVE

UMPQUA HIGHWAY 38: REFERENCE DOCUMENTS USED IN RETRACING THIS ALIGNMENT INCLUDE ODOT RIGHT OF WAY DRAWINGS 3B-11-11 AND 4B-16-12, AS WELL AS SURVEY *M11-69. FOR THE WEST-EAST TANGENT GOING THROUGH THE CITY OF DRAIN THE RECORD DISTANCES FROM POINTS 1019 AND 1020 WERE USED TO DETERMINE THE SOUTHWEST CORNER OF BLOCK 17; THEN DEVELOP A LINE FROM THIS S.W. CORNER BACK TO POINT 1020 THEN OFFSET 30 FEET TO THE CENTERLINE. FOR THE SOUTH-NORTH TANGENT THE RECORD DISTANCE FROM 1020 TO THE SOUTHEAST CORNER OF BLOCK 5 WAS USED; FROM HERE TURN THE CORNER GOING NORTH THE RECORD ANGLE OF 90°10'20", THEN OFFSET 30 FEET TO THE CENTERLINE. BOTH OF THESE TANGENTS FIT THE SIDEWALKS AND OTHER BOUNDARY FEATURES VERY WELL. FOR THE CURVES ON THE WEST END OF THIS ALIGNMENT THE RECORD DATA FROM THE ODOT RIGHT OF WAY DRAWINGS WERE USED TO DEVELOP THIS PORTION, AS WELL AS THE RADIUS AT THE EAST END OF "B" STREET. FOR STATIONING THE ENGLISH 1805+27.6 P.T. WAS CONVERTED TO METRIC 55+024.923 AT THE RETRACED POINT OF TANGENT (P.T.).

DRAIN-YONCALLA HIGHWAY: IN DECEMBER OF 1990 ODOT TIED TWO CENTER-LINE MONUMENTS ON THIS PORTION OF THE HIGHWAY, BUT THEY HAVE SINCE THEN BEEN DESTROYED AND COULD NOT BE FOUND FOR THIS CURRENT SURVEY. HOWEVER, USING TWO COMMON POINTS TIED IN 1990 AND 1998 (THAT IS, POINTS DYH3 AND DYH4) THE LOCATIONS OF THE TWO PREVIOUSLY FOUND CENTERLINE MONUMENTS COULD BE CALCULATED ON THIS SURVEY.

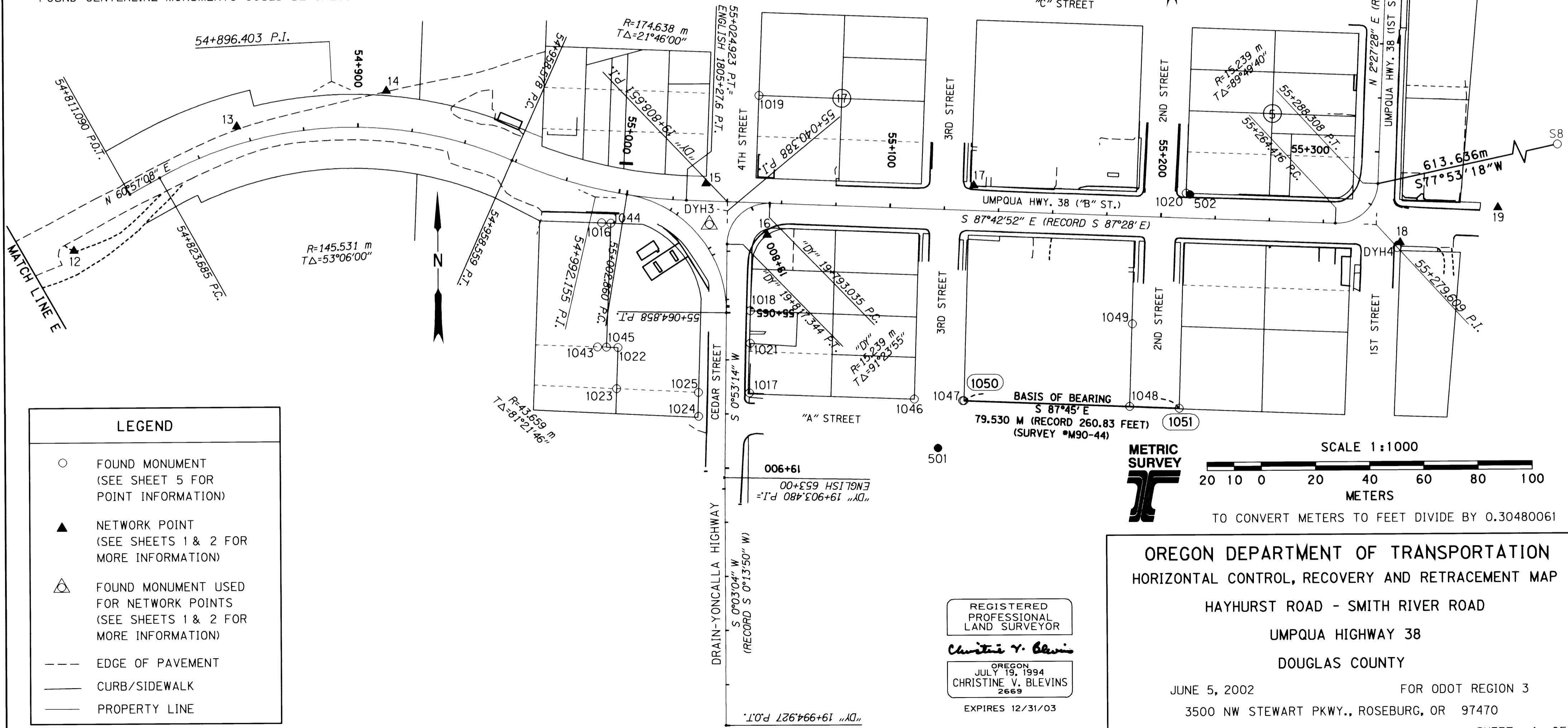
THESE TWO POINTS REPRESENT THE POINTS OF INTERSECTION AT METRIC STATIONS 19+903.480 (ENGLISH STATION 653+00) AND 19+994.927. THE STATIONING AND OTHER RECORD DATA WERE TAKEN FROM ODOT DRAWING NOS. 1R-4-199, 10B-2-5 AND 3B-11-11. THE RIGHT OF WAY BOUNDARIES AND PROPERTY LINES ADJACENT TO THIS SECTION WERE RETRACED USING FOUND MONUMENTS, NOT THE RETRACED CENTERLINE.

THE WESTBOUND RADIUS CONNECTING FROM THE UMPQUA HIGHWAY TO THE DRAIN-YONCALLA HIGHWAY IS THE RECORD RADIUS AS FOUND ON ODOT AS-CONSTRUCTED PLANS *2V-265.

OTHER REFERENCE DOCUMENTS USED FOR THE RETRACEMENT:

DOUGLAS COUNTY SURVEYS: M11-69, M90-44, M139-21, M109-67, M14-59, PLAT OF DRAIN VOL. 1, PG. 56, AND PLAT 1994-0096.
 ODOT R/W DRAWING NOS. 3B-11-11, 4B-16-12, 1B-20-16, AND 1R-4-199.
 ODOT AS-CONSTRUCTED PLANS *2V-265, AND ODOT RW DEED 43678.

MATCH LINE F
 FILED
 Date: 6/7/2002 By: JP
 This survey consists of:
 Map:
 Narrative:
 Corner Rpt:
 DOUGLAS COUNTY SURVEYOR



LEGEND

- FOUND MONUMENT (SEE SHEET 5 FOR POINT INFORMATION)
- ▲ NETWORK POINT (SEE SHEETS 1 & 2 FOR MORE INFORMATION)
- △ FOUND MONUMENT USED FOR NETWORK POINTS (SEE SHEETS 1 & 2 FOR MORE INFORMATION)
- EDGE OF PAVEMENT
- CURB/SIDEWALK
- PROPERTY LINE

METRIC SURVEY

SCALE 1:1000

20 10 0 20 40 60 80 100 METERS

TO CONVERT METERS TO FEET DIVIDE BY 0.30480061

REGISTERED PROFESSIONAL LAND SURVEYOR
 Christine V. Blevins
 OREGON JULY 19, 1994
 CHRISTINE V. BLEVINS 2669
 EXPIRES 12/31/03

OREGON DEPARTMENT OF TRANSPORTATION
 HORIZONTAL CONTROL, RECOVERY AND RETRACEMENT MAP
 HAYHURST ROAD - SMITH RIVER ROAD
 UMPQUA HIGHWAY 38
 DOUGLAS COUNTY

JUNE 5, 2002 FOR ODOT REGION 3
 3500 NW STEWART PKWY., ROSEBURG, OR 97470
 SCALE: 1 mm = 1 m SHEET 4 OF 8