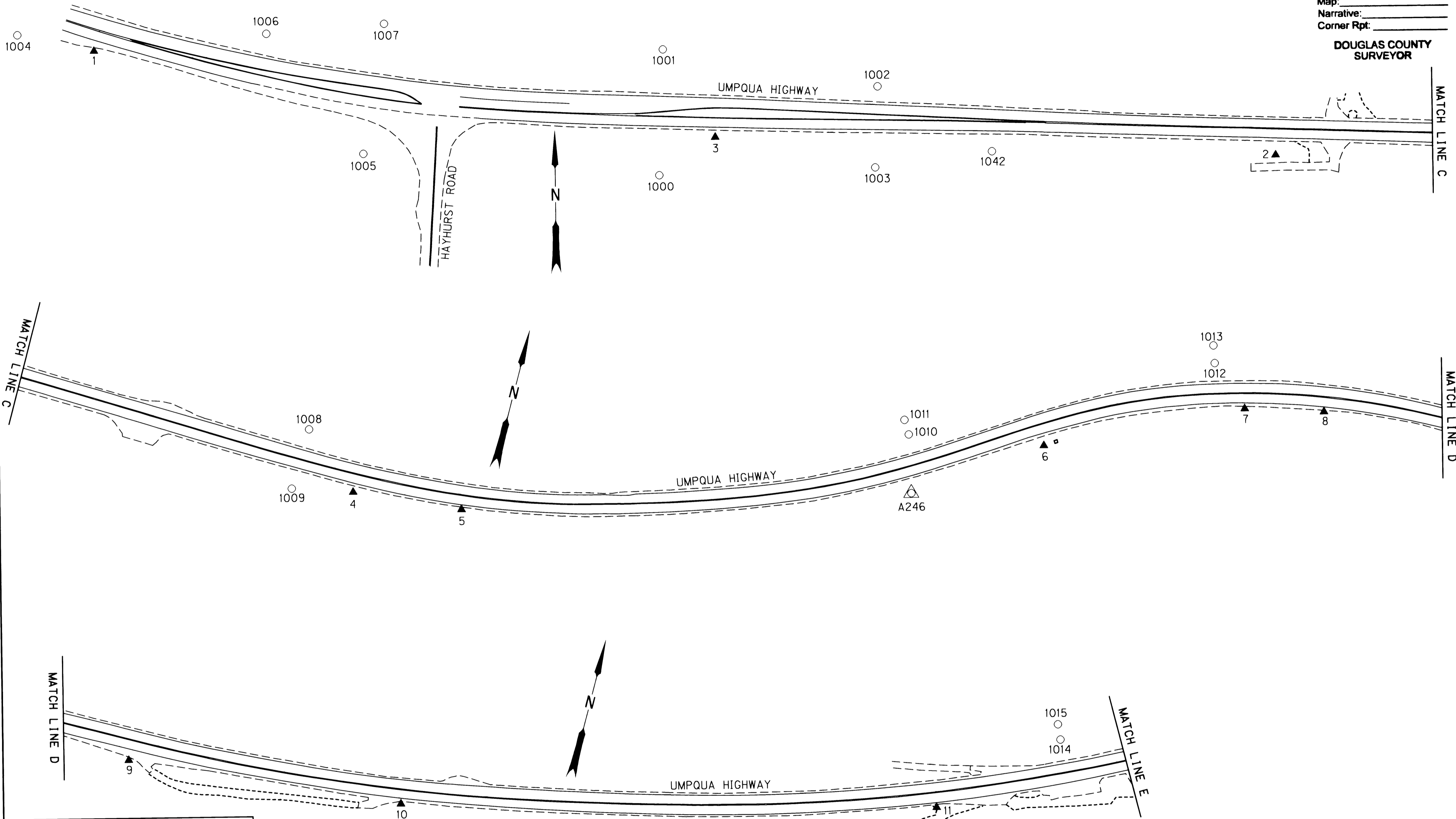


NW 1/4 SECTION 17, AND NE 1/4 & NW 1/4 SECTION 18, T. 22 S., R. 5 W., W.M.

FILED
 Date: 6/7/2002 By: JP
 This survey consists of:
 Map: _____
 Narrative: _____
 Corner Rpt: _____

DOUGLAS COUNTY
 SURVEYOR



LEGEND

- FOUND MONUMENT
(SEE SHEET 5 FOR POINT INFORMATION)
- ▲ NETWORK POINT
(SEE SHEET 1 & 2 FOR POINT INFORMATION)
- △ FOUND MONUMENT USED AS NETWORK POINT
(SEE SHEET 1 & 2 FOR MORE INFORMATION)
- EDGE OF PAVEMENT

REGISTERED
 PROFESSIONAL
 LAND SURVEYOR
Christine V. Blevins
 OREGON
 JULY 19, 1994
 CHRISTINE V. BLEVINS
 2669
 EXPIRES 12/31/03



SCALE 1:1000
 20 10 0 20 40 60 80 100
 METERS
 TO CONVERT METERS TO FEET DIVIDE BY 0.30480061

OREGON DEPARTMENT OF TRANSPORTATION
 HORIZONTAL CONTROL, RECOVERY AND RETRACEMENT MAP
 HAYHURST ROAD - SMITH RIVER ROAD
 UMPQUA HIGHWAY 38
 DOUGLAS COUNTY
 JUNE 5, 2002 FOR ODOT REGION 3
 3500 NW STEWART PKWY., ROSEBURG, OR 97470
 SCALE: 1 mm = 1 m SHEET 3 OF 8