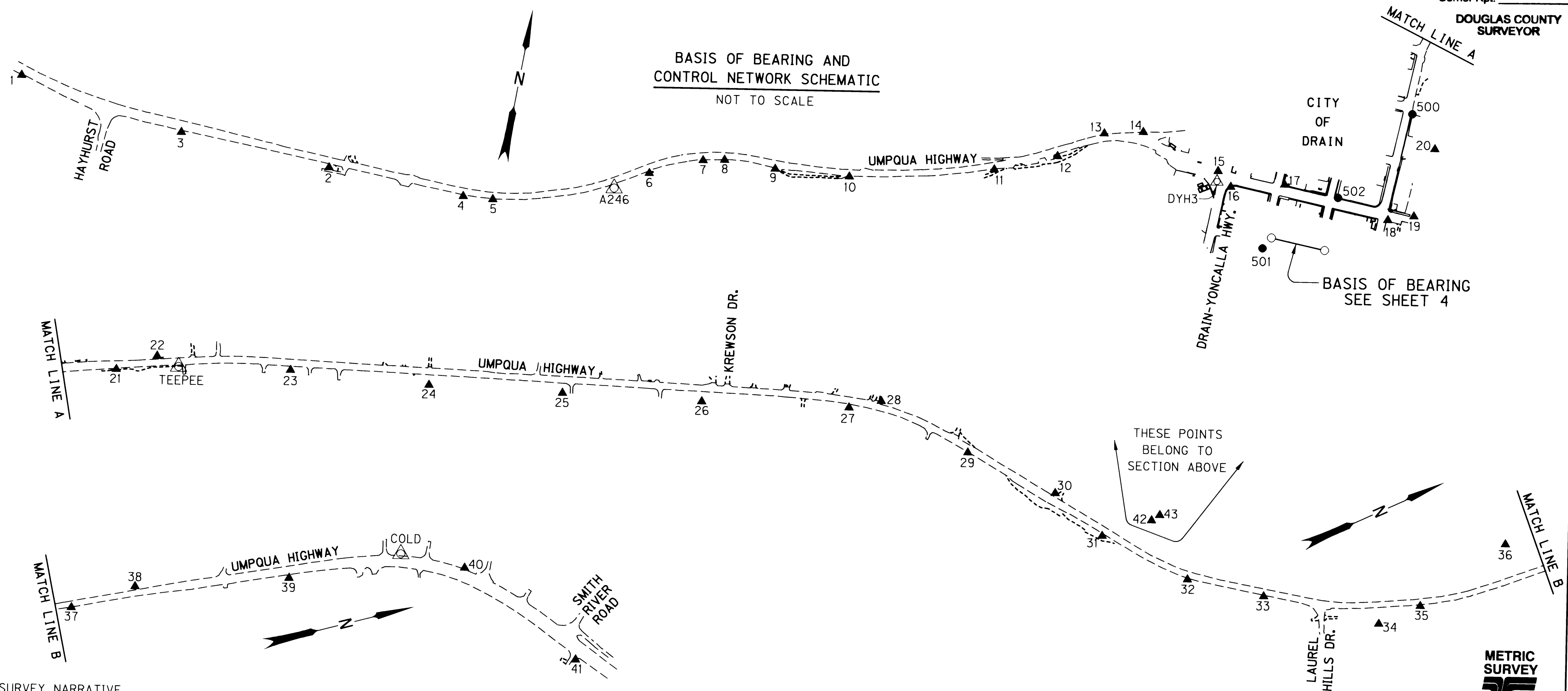


SECTIONS 4, 8, 9, 17 & 18, T. 22 S., R. 5 W., W.M.

FILED
 Date: 6/7/2002 By: JP
 This survey consists of:
 Map:
 Narrative:
 Corner Rpt:

DOUGLAS COUNTY SURVEYOR

BASIS OF BEARING AND CONTROL NETWORK SCHEMATIC
 NOT TO SCALE



SURVEY NARRATIVE

THE ORIGINAL PURPOSE OF THIS SURVEY WAS TO ESTABLISH CONTROL FOR AN OREGON DEPARTMENT OF TRANSPORTATION (ODOT) PROJECT CALLED "HAYHURST ROAD - SMITH RIVER ROAD" BEGINNING IN DECEMBER OF 1997. THE PROJECT WAS CANCELLED SHORTLY AFTER THE SURVEY WORK WAS COMPLETED. A NEW PROJECT IS CURRENTLY BEING WORKED ON CALLED "HANCOCK CREEK - LAUREL HILLS DRIVE" WHICH ENCOMPASSES THE ORIGINAL PROJECT LIMITS FOR THIS SURVEY. THE NETWORK AND MONUMENT TIES WERE SURVEYED BY A ROSEBURG ODOT CREW BETWEEN JANUARY 7, 1998 TO MARCH 19, 2002. THE ORIGINAL FIELD NOTES ARE ARCHIVED IN SALEM AS BOOKS #3827 AND #3828.

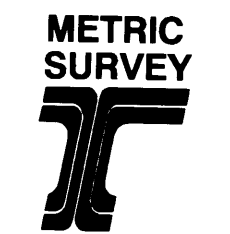
THE ORIGINAL BASIS OF BEARING WAS DEVELOPED BETWEEN NETWORK POINTS 24 AND 27 BY HOLDING ASSUMED COORDINATES ON POINT 24 AND TAKING A COMPASS BEARING TO POINT 27. HOWEVER, WITH THE NEW PROJECT FOCUSING ON RIGHT OF WAY ISSUES IN THE CITY OF DRAIN THE BASIS OF BEARING WAS CHANGED. MORE MONUMENTS WERE TIED IN THE CITY. AS A RESULT THE SURVEY DATA WAS ROTATED ABOUT POINT 1051 TO HOLD THE RECORD BEARING BACK TO POINT 1050 OF S 87°45' E PER SURVEY *M90-44. THE COORDINATES REMAIN ASSUMED. TO CONVERT METRIC COORDINATES TO ENGLISH DIVIDE BY 0.30480061 (OR 1 METER = 3937 FEET / 1200).

A LEICA TCA 1800 TOTAL STATION THEODOLITE (SERIAL #418939) WAS USED TO MAKE ALL OBSERVATIONS. THIS INSTRUMENT HAS THE FOLLOWING PRECISION: STANDARD ANGULAR ERROR OF +/- 1 SECOND, STANDARD DISTANCE ERROR OF +/- 2 mm, +/- 2 PPM.

A LEAST SQUARES ADJUSTMENT PROGRAM WAS USED TO CALCULATE COORDINATES FOR ALL SET AND FOUND MONUMENTS, EXCEPT POINTS 24 AND 27. THIS PROGRAM PRODUCES: ANGULAR RESIDUALS (THE AMOUNT THE FIELD ANGLE IS ADJUSTED), 94% WERE WITHIN 3 SECONDS AND 100% WERE WITHIN 8 SECONDS; DISTANCE RESIDUALS (THE AMOUNT THE FIELD DISTANCE WAS ADJUSTED), 100% WERE WITHIN 3 mm. THESE RESIDUALS ARE WELL WITHIN ODOT STANDARDS FOR NETWORKS. THERE IS A 95% PROBABILITY THAT THE FINAL POSITIONS OF THE NETWORK POINTS ARE WITHIN THE ERROR ELLIPSES AS SHOWN ON THE "CONFIDENCE LEVEL LIMITS" TABLE SHOWN ON SHEET 2.

LEGEND	
▲	SET NETWORK POINT (SEE SHEET 2 FOR MORE INFORMATION)
△	FOUND MONUMENT USED AS NETWORK POINT (SEE SHEET 2 FOR MORE INFORMATION)

REGISTERED PROFESSIONAL LAND SURVEYOR
 Christine V. Blevis
 OREGON JULY 19, 1994
 CHRISTINE V. BLEVINS 2669
 EXPIRES 12/31/03



OREGON DEPARTMENT OF TRANSPORTATION
 HORIZONTAL CONTROL, RECOVERY AND RETRACEMENT MAP
 HAYHURST ROAD - SMITH RIVER ROAD
 UMPQUA HIGHWAY 38
 DOUGLAS COUNTY
 JUNE 5, 2002 FOR ODOT REGION 3
 3500 NW STEWART PKWY., ROSEBURG, OR 97470
 SHEET 1 OF 8