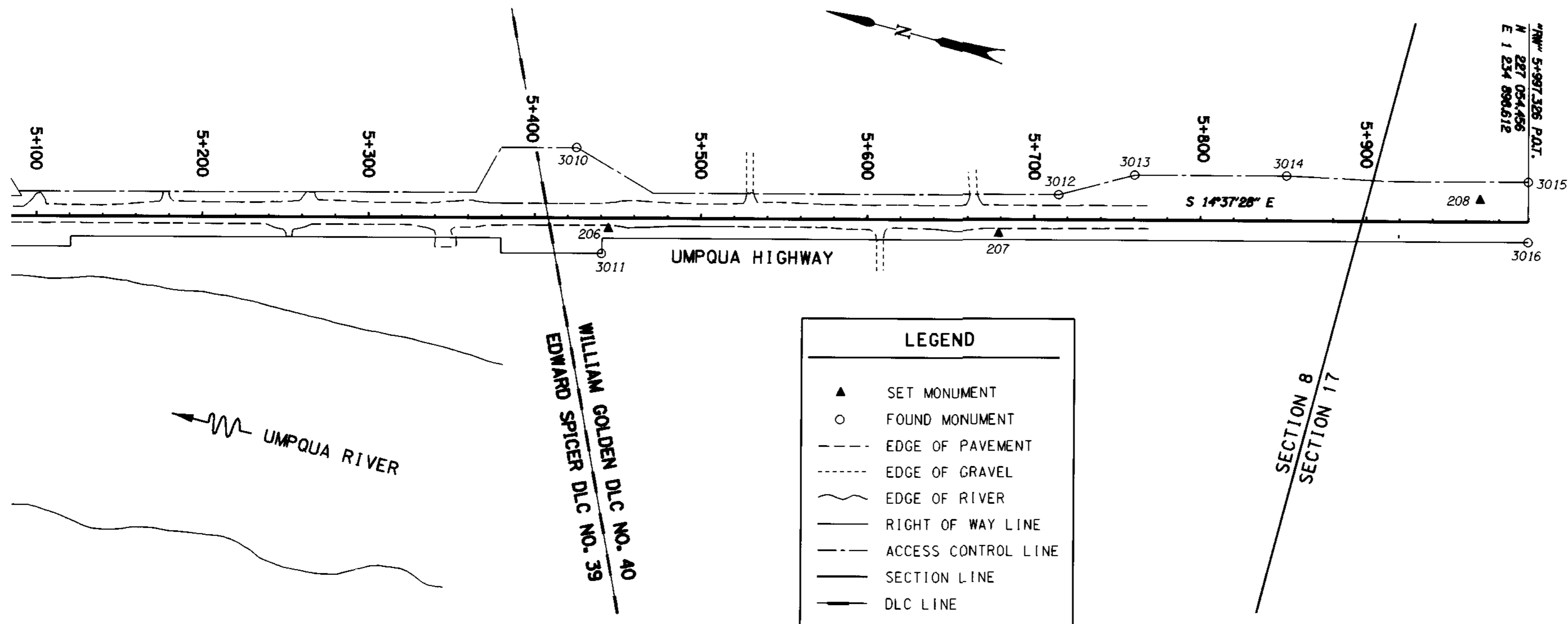


SE 1/4 SEC. 8 AND NE 1/4 SEC. 17, T. 22 S., R. 9 W., W. M.

FILED  
 Date: 3/19/2001 By: JP  
 This survey consists of: 13 PAGES  
 Map: ST. HWY. 38-009M  
 Narrative:  
 Corner Rpt:

DOUGLAS COUNTY  
 SURVEYOR



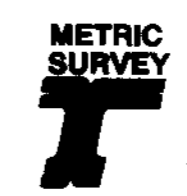
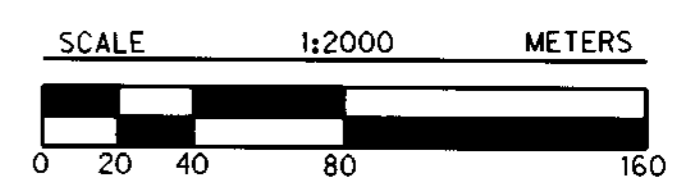
TO ELKTON →

POINT ID	LDP NORTHING	LDP EASTING	STATION	OFFSET	DATES	DESCRIPTION
206	227588.139	1234753.652			4/24/2000	SET 16 MM X 762 MM IRON REBAR WITH A 38 MM BRASS CAP STAMPED "ODOT CONTROL 206" FLUSH WITH SURFACE AND STABILIZED WITH CONC. APPROX. 300 MM DEEP.
207	227360.928	1234810.827			4/24/2000	SET 16 MM X 762 MM IRON REBAR WITH A 38 MM BRASS CAP STAMPED "ODOT CONTROL 207" FLUSH WITH SURFACE AND STABILIZED WITH CONC. APPROX. 300 MM DEEP.
208	227086.072	1234905.009			4/24/2000	SET 16 MM X 762 MM IRON REBAR WITH A 38 MM BRASS CAP STAMPED "ODOT CONTROL 208" FLUSH WITH SURFACE AND STABILIZED WITH CONC. APPROX. 300 MM DEEP.
3010	227619.051	1234795.428	"RW" 5+424.971	42.711 LT.	4/24/2000	FOUND 5/8" IRON ROD WITH A 1 1/2" ALUM. CAP STAMPED "OREGON STATE HWY. DIV. 178 140.0" 50 MM ABOVE SURFACE IN GOOD CONDITION. ODOT R/W STATION 178+00, 140 FT. LT. (ODOT DRG. NO. 2B-24-20)
3011	227588.157	1234737.298	"RW" 5+440.187	21.336 RT.	4/24/2000	FOUND 5/8" IRON REBAR 50 MM ABOVE SURFACE IN GOOD CONDITION. ODOT R/W STATION 178+50, 70 FT. RT. (ODOT DRG. NO. 2B-24-20)
3012	227331.799	1234842.012	"RW" 5+714.678	15.259 LT.	4/24/2000	FOUND 5/8" IRON ROD WITH A 1 1/2" ALUM. CAP STAMPED "OREG. STATE HWY. DIV." 40 MM ABOVE SURFACE IN FAIR CONDITION. ODOT R/W STATION 187+50, 50 FT. LT. (ODOT DRG. NO. 2B-24-20)
3013	227290.667	1234865.295	"RW" 5+760.356	27.402 LT.	4/24/2000	FOUND 5/8" IRON ROD WITH A 1 1/2" ALUM. CAP STAMPED "OREG. STATE HWY. DIV." 40 MM ABOVE SURFACE IN GOOD CONDITION. ODOT R/W STATION 189+00, 90 FT. LT. (ODOT DRG. NO. 2B-24-20)
3014	227202.201	1234888.381	"RW" 5+851.785	27.404 LT.	4/24/2000	FOUND 5/8" IRON ROD WITH A 1 1/2" ALUM. CAP STAMPED "OREG. STATE HWY. DIV." 110 MM ABOVE SURFACE IN GOOD CONDITION. ODOT R/W STATION 192+00, 90 FT. LT. (ODOT DRG. NO. 2B-24-20)
3015	227060.615	1234922.178	"RW" 5+997.317	24.358 LT.	4/24/2000	FOUND 5/8" IRON ROD 200 MM BELOW SURFACE IN POOR CONDITION. ROD IS BENT FLAT TO THE GROUND TIED WHERE ROD ENTERS THE GROUND. ODOT R/W STATION 196+78.5 P.C., 80 FT. LT. (ODOT DRG. NO. 2B-24-20)
3016	227051.380	1234886.841	"RW" 5+997.331	12.166 RT.	4/24/2000	FOUND 5/8" IRON ROD 60 MM ABOVE SURFACE IN FAIR CONDITION. ODOT R/W STATION 196+78.50 P.C., 40 FT. RT. (ODOT DRG. NO. 2B-24-20)

REGISTERED  
 PROFESSIONAL  
 LAND SURVEYOR

*Christie V. Blavin*  
 OREGON  
 JULY 18, 1994  
 CHRISTINE V. BLAVIN  
 2000

EXPIRES: DEC. 31, 2001



TO CONVERT METERS TO FEET DIVIDE BY 0.3048

OREGON DEPARTMENT OF TRANSPORTATION  
 HORIZONTAL CONTROL, RECOVERY,  
 AND RETRACEMENT MAP  
 SCOTTSBURG - WELLS CREEK SECTION  
 UMPQUA HIGHWAY  
 DOUGLAS COUNTY  
 3500 STEWART PARKWAY, SUITE 140  
 ROSEBURG, OREGON 97470  
 MARCH 12, 2001  
 PROJECT KEY \*09075