

NW 1/4, NE 1/4, & SE 1/4 SEC. 8, T. 22 S., R. 9 W., W. M.

FILED

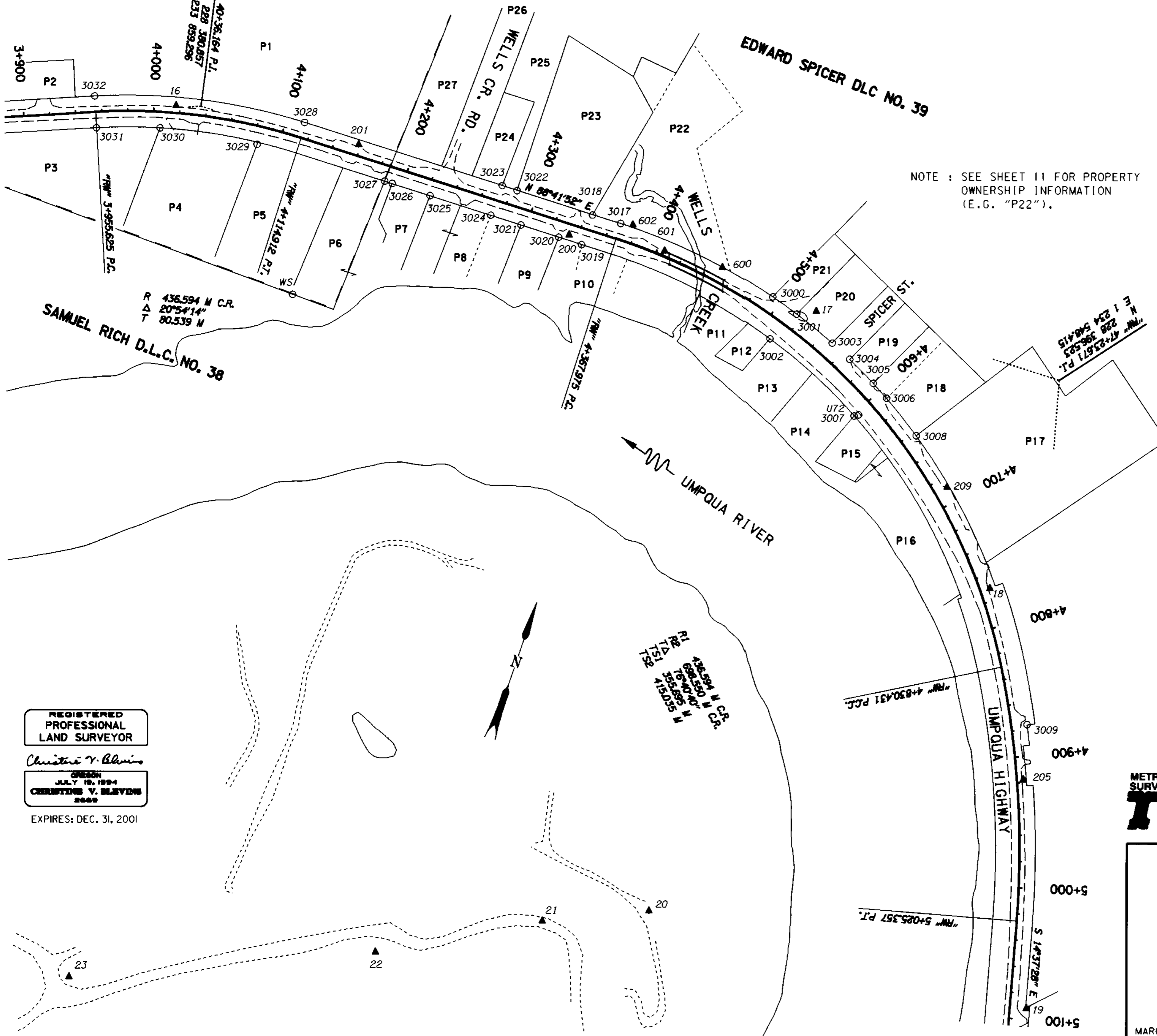
Date: 3/19/2001 By: JP
 This survey consists of: 13 PAGES
 Map: ST. HWY. 38-009J
 Narrative:
 Corner Ppt:

DOUGLAS COUNTY
 SURVEYOR

RETRACEMENT NARRATIVE

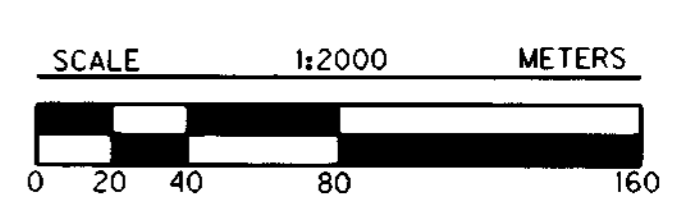
THE RIGHT OF WAY ALIGNMENT FOR "WELLS CREEK BRIDGE" PROJECT WAS RETRACED AS FOLLOWS. THE DISTANCE BETWEEN POINTS 3031 AND 3032, ALSO BETWEEN POINTS 3034 AND 3035, WAS SPLIT IN ORDER TO FORM THE FIRST TANGENT. THE RECORD OFFSET WAS HELD FROM POINTS 3028 AND 3017 TO FORM THE SECOND TANGENT. THE THIRD AND LAST TANGENT WAS FORMED HOLDING THE RECORD OFFSET FROM POINT 3011 AND A SPLIT OF THE RECORD OFFSETS BETWEEN 3015 AND 3016. THE RECORD CURVE RADIUS WAS USED ON ALL CURVES. THE RECORD OFFSET FROM 3009 WAS USED AS A PASS THROUGH POINT FOR THE COMPOUND CURVE SECTION. THE RECORD STATIONING OF POINT 3017 WAS CONVERTED TO METRIC AND USED TO CONTROL STATIONING FOR THE ALIGNMENT.

NOTE: SEE SHEET 11 FOR PROPERTY OWNERSHIP INFORMATION (E.G. "P22").



LEGEND

- ▲ SET MONUMENT
- FOUND MONUMENT
- EDGE OF PAVEMENT
- - - - EDGE OF GRAVEL
- ~ ~ ~ ~ EDGE OF RIVER
- RIGHT OF WAY AND PROPERTY LINE
- - - - OLD PROPERTY LINE
- DLC LINE



TO CONVERT METERS TO FEET DIVIDE BY 0.3048

REGISTERED
 PROFESSIONAL
 LAND SURVEYOR

Christine V. Blavin
 OREGON
 JULY 19, 1994
 CHRISTINE V. BLAVIN
 2000

EXPIRES: DEC. 31, 2001

OREGON DEPARTMENT OF TRANSPORTATION
 HORIZONTAL CONTROL, RECOVERY,
 AND RETRACEMENT MAP

SCOTTSBURG - WELLS CREEK SECTION
 UMPQUA HIGHWAY
 DOUGLAS COUNTY

3500 STEWART PARKWAY, SUITE 140
 ROSEBURG, OREGON 97470

MARCH 12, 2001
 PROJECT KEY #09075

SHEET 10 OF 13

ST. HWY. 38-009J