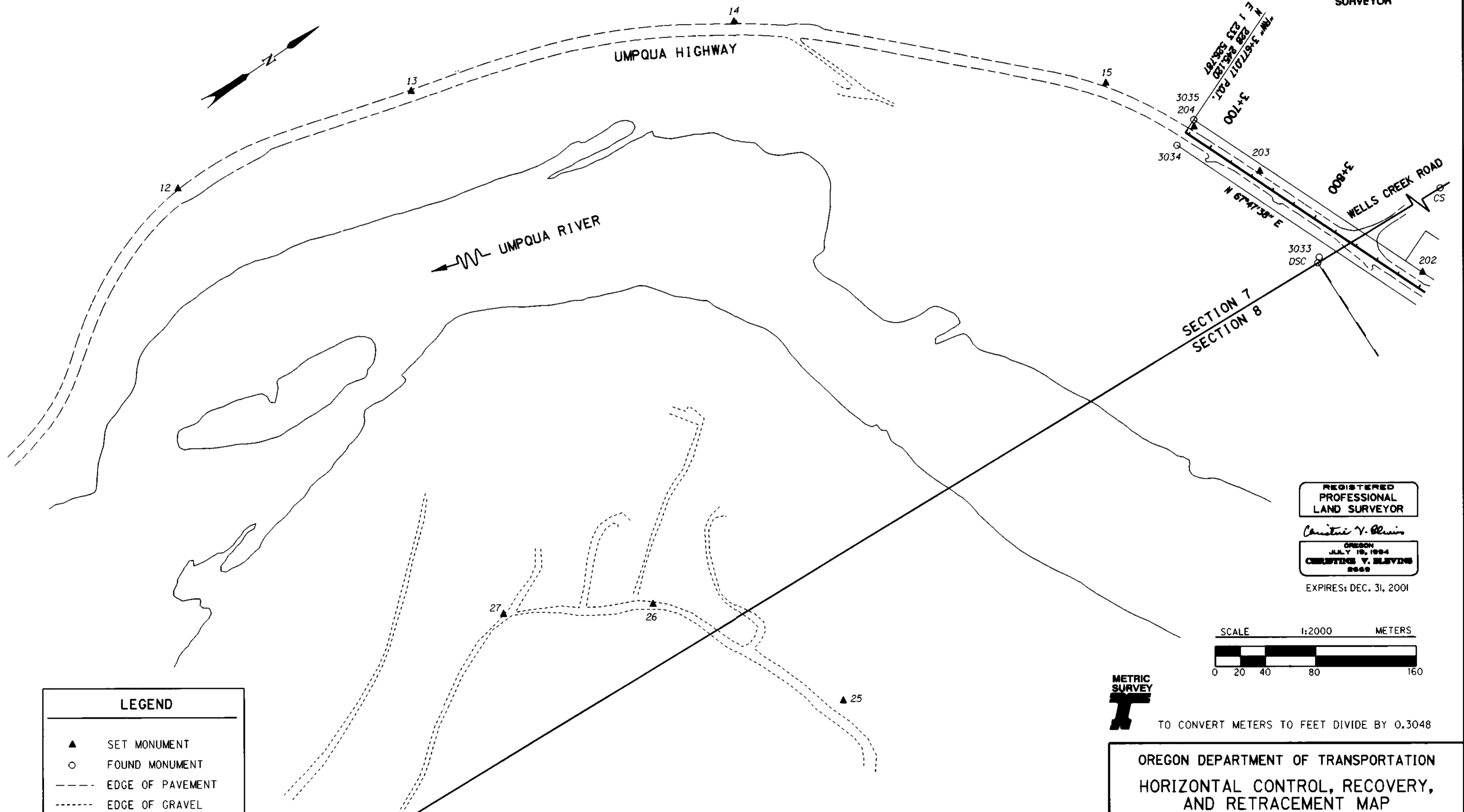


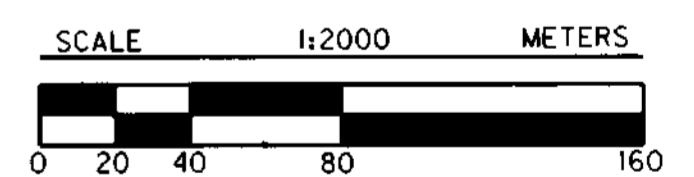
SE 1/4 & NE 1/4 SEC. 7 AND NW 1/4 SEC. 8, T. 22 S., R. 9 W., W. M.

FILED
 Date: 3/19/2001 By: JP
 This survey consists of: 13 PAGES
 Map: ST. HWY. 38-009H
 Narrative: _____
 Corner Rpt: _____

DOUGLAS COUNTY
 SURVEYOR



REGISTERED
 PROFESSIONAL
 LAND SURVEYOR
Christine V. Blavin
 OREGON
 JULY 18, 1984
 CHRISTINE V. BLAVIN
 2000
 EXPIRES: DEC. 31, 2001



TO CONVERT METERS TO FEET DIVIDE BY 0.3048

LEGEND	
▲	SET MONUMENT
○	FOUND MONUMENT
---	EDGE OF PAVEMENT
- - - -	EDGE OF GRAVEL
~~~~~	EDGE OF RIVER
—	RIGHT OF WAY AND PROPERTY LINE
—	SECTION LINE
—	DLC LINE

NOTE : SEE SHEET 10 FOR CENTERLINE RETRACEMENT NARRATIVE.

OREGON DEPARTMENT OF TRANSPORTATION  
 HORIZONTAL CONTROL, RECOVERY,  
 AND RETRACEMENT MAP  
 SCOTTSBURG - WELLS CREEK SECTION  
 UMPQUA HIGHWAY  
 DOUGLAS COUNTY  
 3500 STEWART PARKWAY, SUITE 140  
 ROSEBURG, OREGON 97470  
 MARCH 12, 2001  
 PROJECT KEY #09075