

NE 1/4 SEC. 18 AND SE 1/4 SEC. 7, T. 22 S., R. 9 W., W. M.

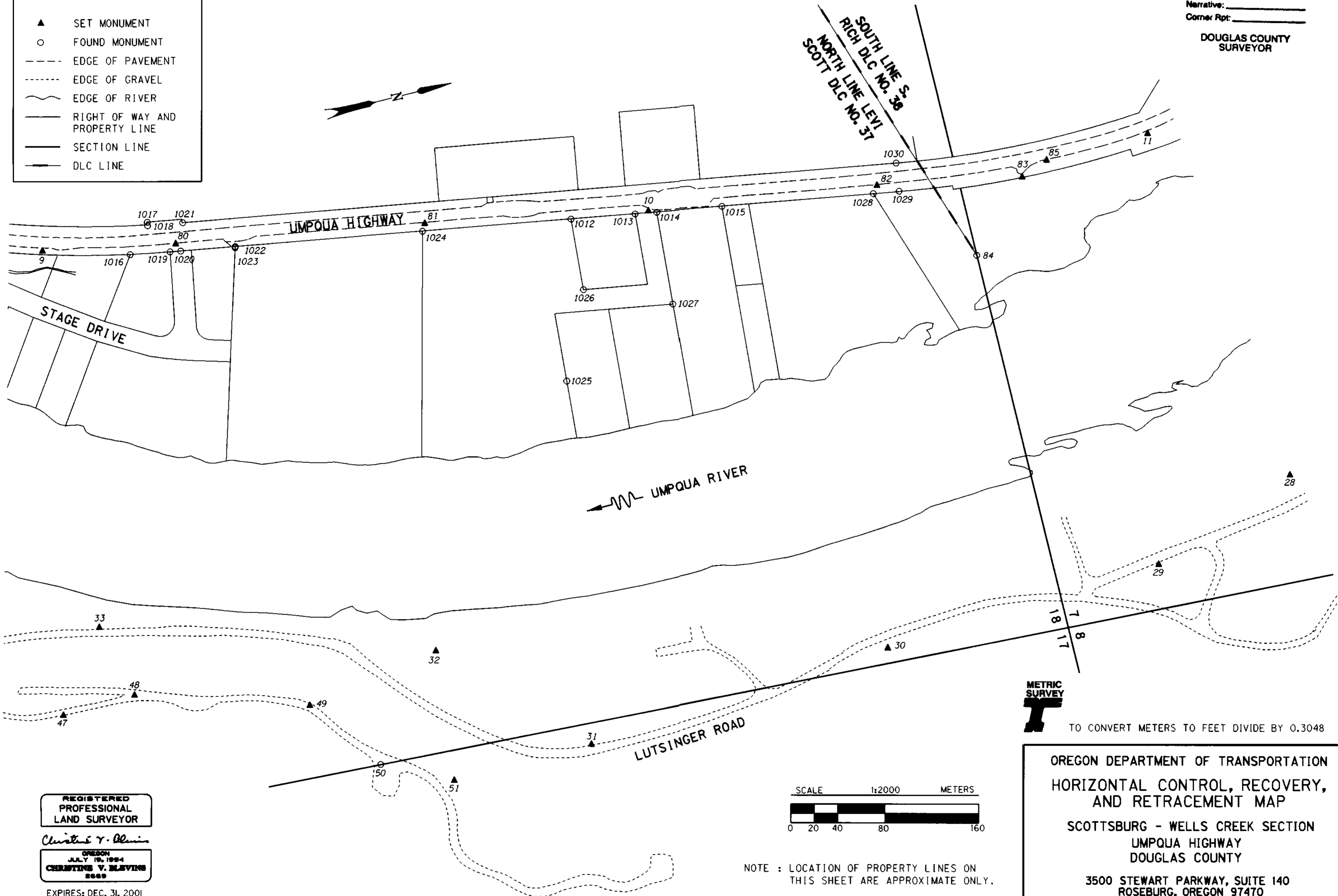
FILED

Date: 3/19/2001 By: JP
 This survey consists of: 13 PAGES
 Map: ST. HWY. 38-009F
 Narrative: _____
 Corner Rpt: _____

DOUGLAS COUNTY
 SURVEYOR

LEGEND

- ▲ SET MONUMENT
- FOUND MONUMENT
- - - - EDGE OF PAVEMENT
- · - · - · EDGE OF GRAVEL
- ~ ~ ~ ~ EDGE OF RIVER
- RIGHT OF WAY AND PROPERTY LINE
- SECTION LINE
- DLC LINE

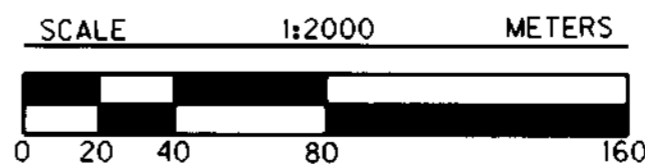


REGISTERED
 PROFESSIONAL
 LAND SURVEYOR

Christine V. Blivins

OREGON
 JULY 19, 1994
 CHRISTINE V. BLIVINS
 2000

EXPIRES: DEC. 31, 2001



NOTE : LOCATION OF PROPERTY LINES ON THIS SHEET ARE APPROXIMATE ONLY.



TO CONVERT METERS TO FEET DIVIDE BY 0.3048

OREGON DEPARTMENT OF TRANSPORTATION
 HORIZONTAL CONTROL, RECOVERY,
 AND RETRACEMENT MAP

SCOTTSBURG - WELLS CREEK SECTION
 UMPQUA HIGHWAY
 DOUGLAS COUNTY

3500 STEWART PARKWAY, SUITE 140
 ROSEBURG, OREGON 97470

MARCH 12, 2001
 PROJECT KEY #09075

SHEET 6 OF 13

ST. HWY. 38-009F