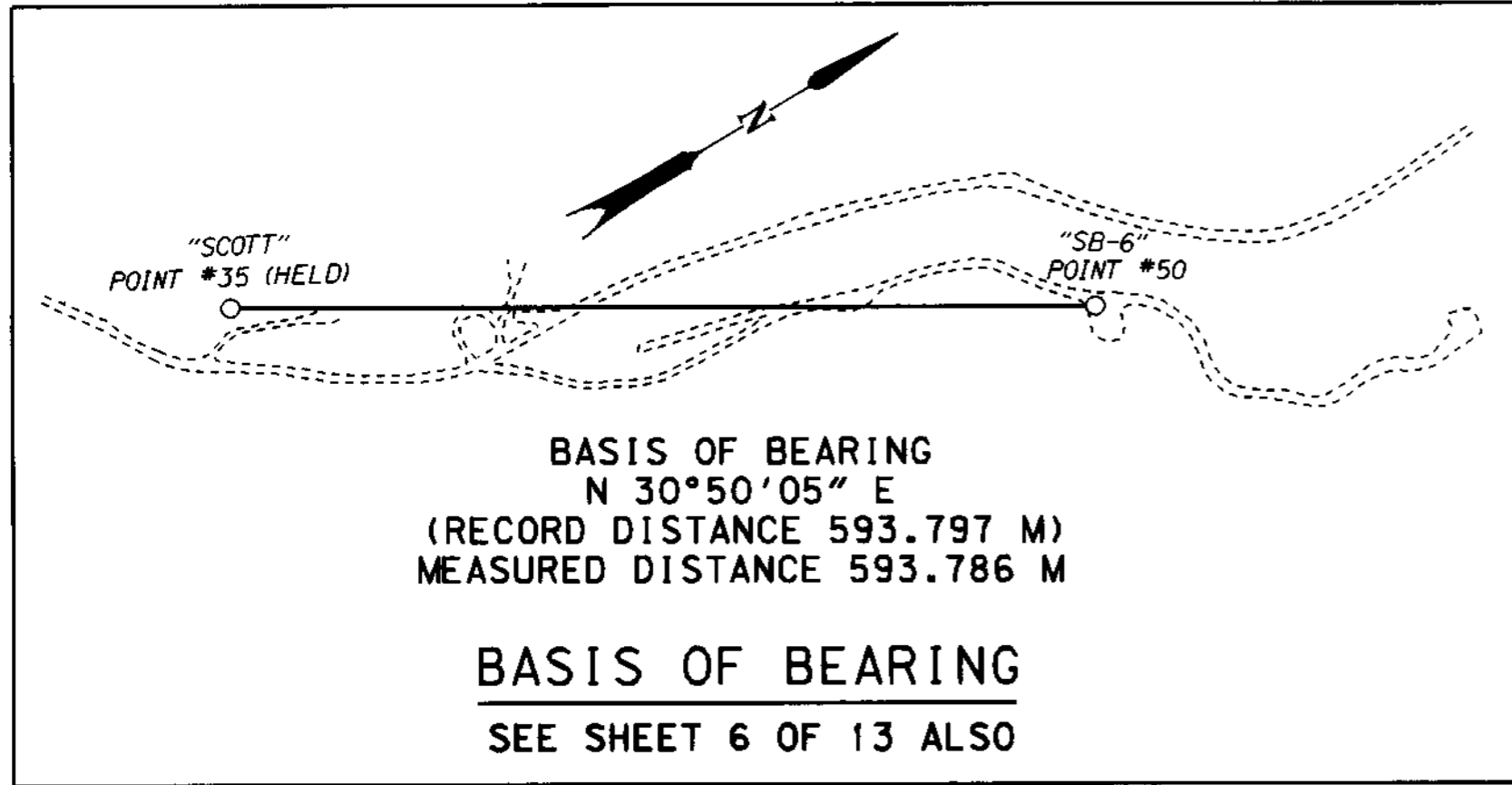


SW 1/4 & SE 1/4 SEC. 18, T. 22 S., R. 9 W., W. M.

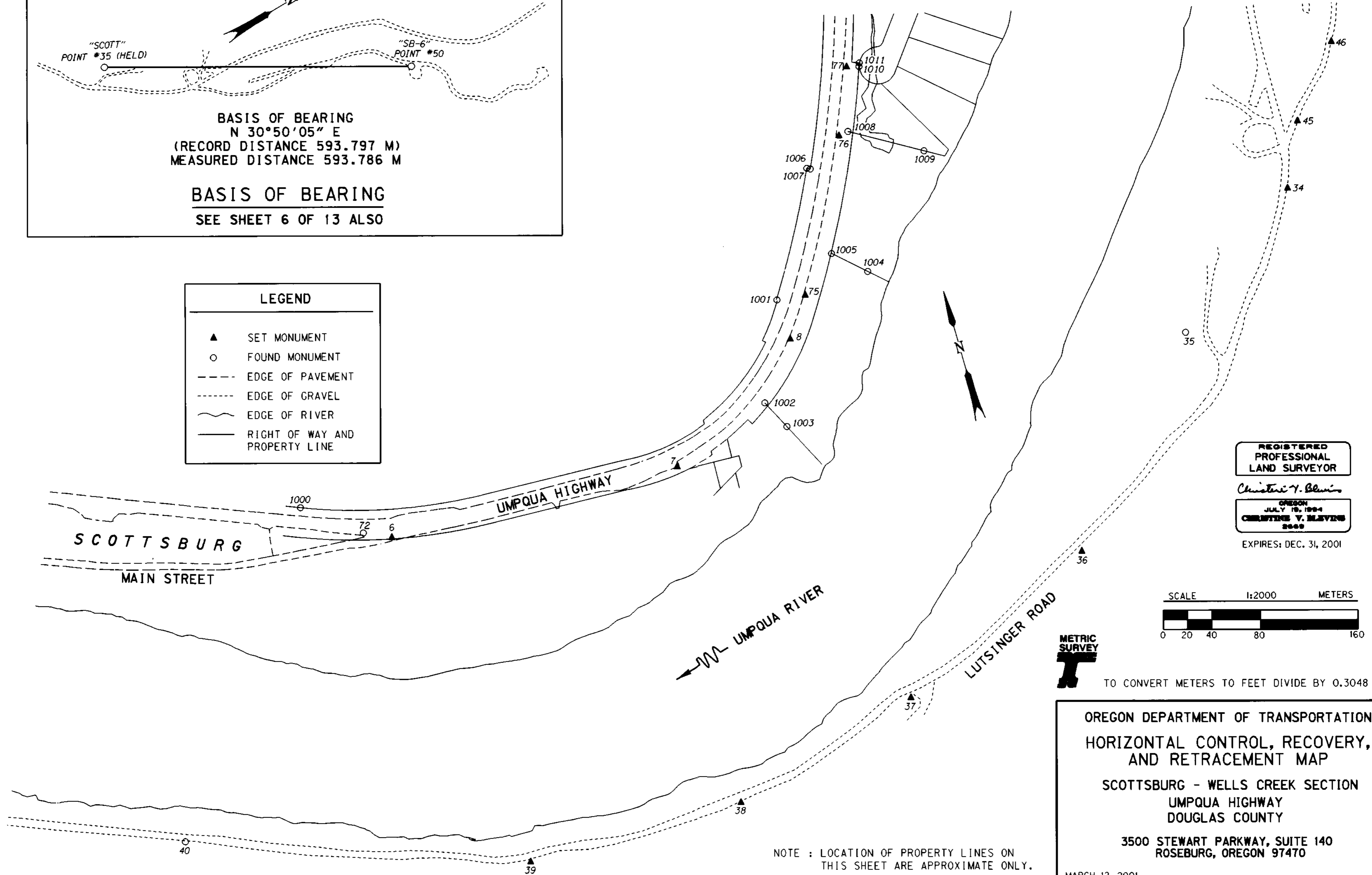
FILED

Date: 3/19/2001 By: J.P.
 This survey consists of: 13 PAGES
 Map: ST. HWY. 38-009D
 Narrative: _____
 Corner Rpt: _____

DOUGLAS COUNTY
 SURVEYOR



LEGEND	
▲	SET MONUMENT
○	FOUND MONUMENT
---	EDGE OF PAVEMENT
- - -	EDGE OF GRAVEL
~~~~~	EDGE OF RIVER
—	RIGHT OF WAY AND PROPERTY LINE



REGISTERED  
 PROFESSIONAL  
 LAND SURVEYOR

*Christine V. Blavin*

OREGON  
 JULY 19, 1994  
 CHRISTINE V. BLAVIN  
 2000

EXPIRES: DEC. 31, 2001



TO CONVERT METERS TO FEET DIVIDE BY 0.3048

OREGON DEPARTMENT OF TRANSPORTATION  
 HORIZONTAL CONTROL, RECOVERY,  
 AND RETRACEMENT MAP

SCOTTSBURG - WELLS CREEK SECTION  
 UMPQUA HIGHWAY  
 DOUGLAS COUNTY

3500 STEWART PARKWAY, SUITE 140  
 ROSEBURG, OREGON 97470

MARCH 12, 2001  
 PROJECT KEY #09075

SHEET 4 OF 13

NOTE : LOCATION OF PROPERTY LINES ON  
 THIS SHEET ARE APPROXIMATE ONLY.

ST. HWY. 38-009D.