

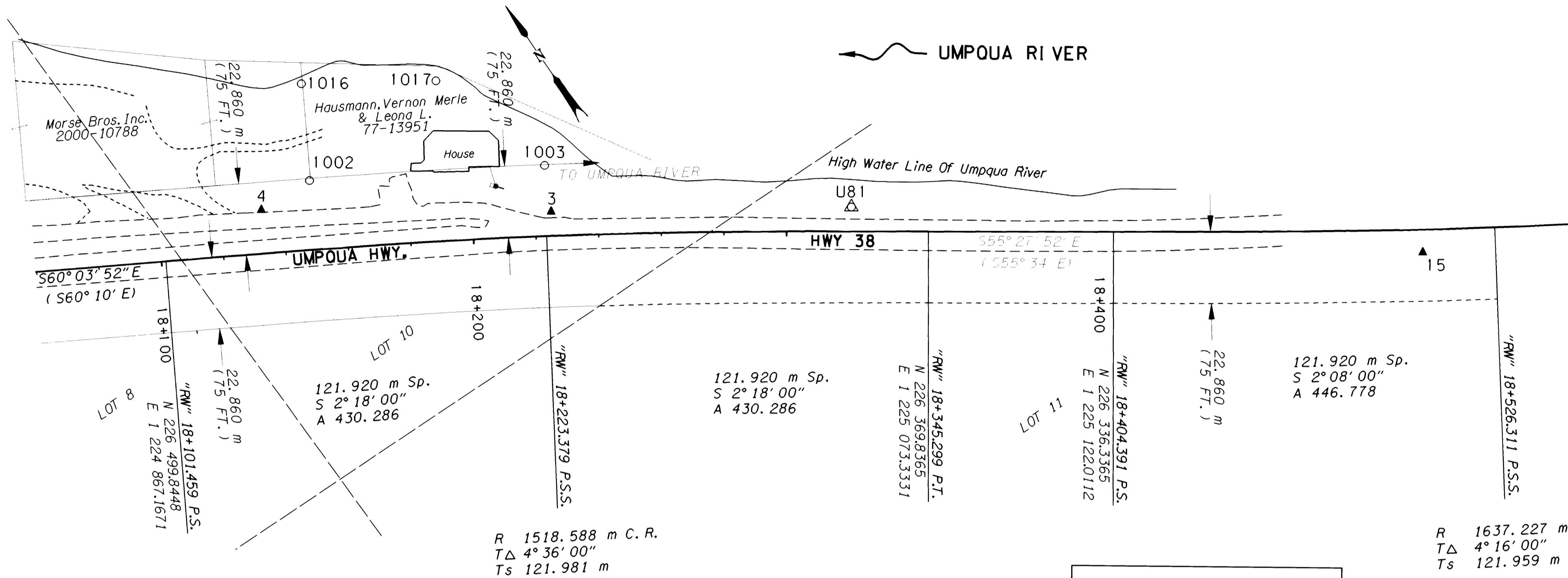
COUNTY SURVEYORS FILE DATA
DO NOT REMOVE FROM OFFICE

NE 1/4 & SE 1/4, SEC. 17, T. 22 S., R.10 W., W.M.

FILED

Date: 11/30/2000 By: JP
This survey consists of: 5 Pgs.
Map: M136-14 E
Narrative:
Corner Rot:

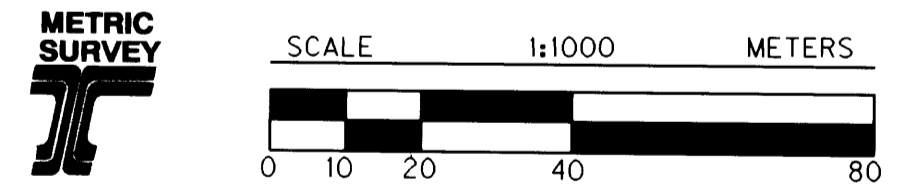
DOUGLAS COUNTY
JP SURVEYOR



LEGEND

- () RECORD DATA PER 4B-21-23
- ▲ SET MONUMENT
- △ FOUND MONUMENT USED AS NETWORK POINT
- FOUND MONUMENT
- EDGE OF PAVEMENT
- EDGE OF GRAVEL
- EXTG. RIGHT-OF-WAY
- - - - - HIGHWAY EASEMENT

REGISTERED
PROFESSIONAL
LAND SURVEYOR
Christine V. Blevins
OREGON
JULY 19, 1994
CHRISTINE V. BLEVINS
2669
EXPIRES: DEC. 31, 2001



TO CONVERT A METRIC DISTANCE TO FEET, DIVIDE BY 0.3048

POINT ID	LDP NORTHING	LDP EASTING	DESCRIPTION
3	226443.553	1224977.842	SET 16 mm X 762 mm IRON REBAR W/A 38 mm ALUMINUM CAP STAMPED "ODOT HORIZ. CONTROL 3".
4	226496.468	1224901.865	SET 16 mm X 762 mm IRON REBAR W/A 38 mm ALUMINUM CAP STAMPED "ODOT HORIZ. CONTROL 4".
15	226275.262	1225200.003	SET 16 mm X 762 mm IRON REBAR W/A 38 mm BRASS CAP STAMPED "ODOT CONTROL 15" STABILIZED W/CONCRETE APPROX. 300 mm DEEP.
U81	226390.173	1225057.438	FOUND 3" BRASS DISK SET IN TOP OF BOULDER STAMPED "DOUGLAS CO. SURVEYOR'S OFFICE U-81 1973" IN GOOD CONDITION.
1002	226495.129	1224919.640	FOUND 5/8" I. REBAR W/A 1 1/4" PLAST. CAP STAMPED "LS 1091" 120 mm ABOVE SURFACE IN GOOD CONDITION. (DCSO MAP NO. M127-13) - "RW" 18+149.105, 22.198 m LT.
1003	226456.592	1224984.273	FOUND 5/8" I. REBAR W/A 1 1/4" YELLOW PLAST. CAP STAMPED "LS 1091" 60 mm ABOVE SURFACE IN GOOD CONDITION. (DCSO MAP NO. M127-13) - "RW" 18+223.592, 22.617 m LT.
1016	226522.228	1224935.117	FOUND 5/8" I. REBAR W/A 1 1/4" YELLOW PLAST. CAP STAMPED "LS 1091" FLUSH W/SURFACE IN GOOD CONDITION. (DCSO MAP NO. M127-13).
1017	226498.642	1224971.026	FOUND 5/8" I. REBAR W/A 1 1/4" YELLOW PLAST. CAP STAMPED "LS 1091" FLUSH W/SURFACE IN GOOD CONDITION. (DCSO MAP NO. M127-13).

OREGON DEPARTMENT OF TRANSPORTATION
HORIZONTAL CONTROL,
RECOVERY AND RETRACEMENT MAP
CHARLOTTE CR. - LUDER CR. PASSING LANE SEC.
UMPUQA HWY. (HWY. 38)
DOUGLAS COUNTY
3500 STEWART PARKWAY, SUITE 140
ROSEBURG, OREGON 97470
NOVEMBER 17, 2000
PROJECT KEY #10842
SHEET 5 OF 5

ST. HWY. 38-008E