

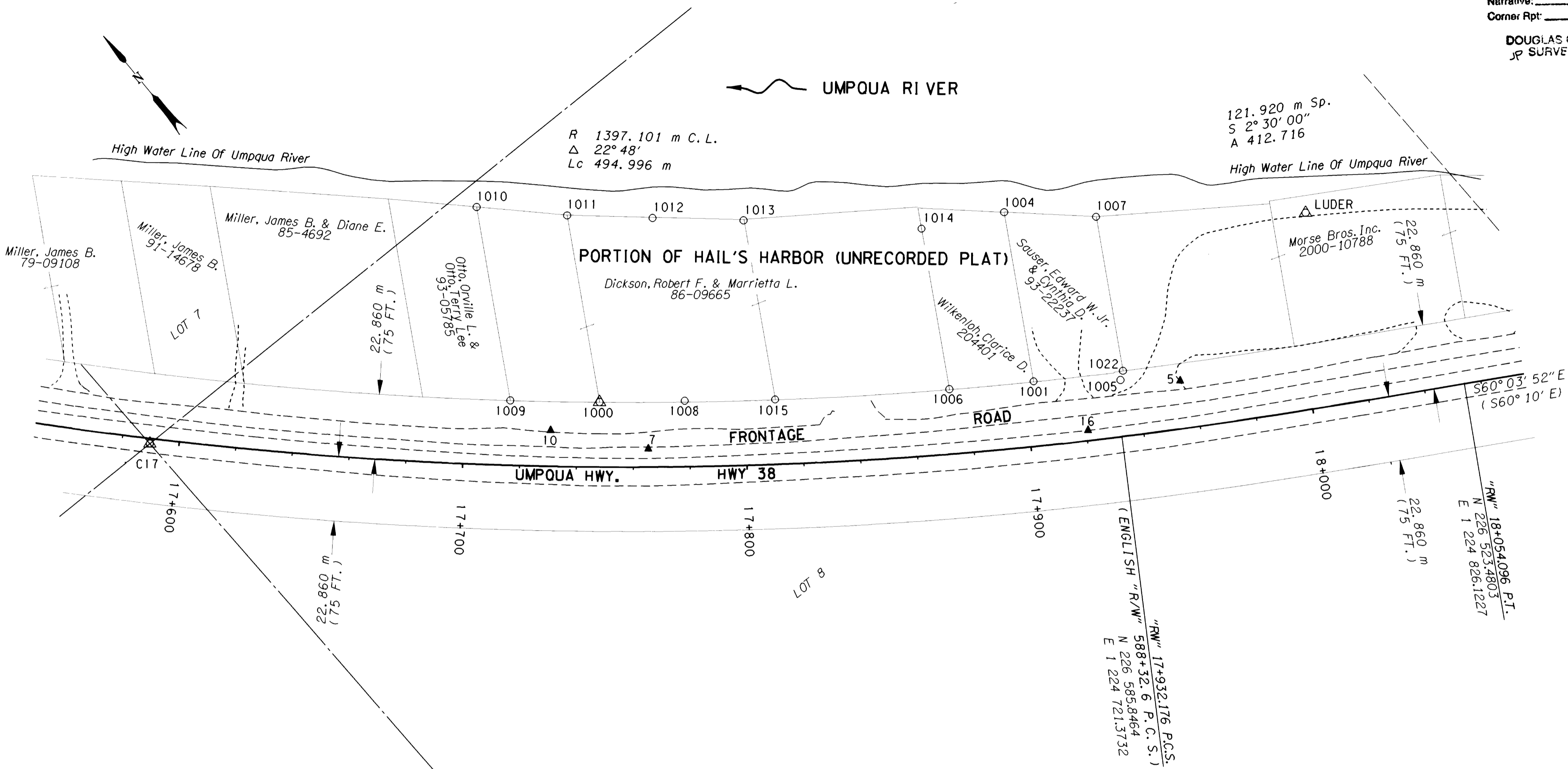
COUNTY SURVEYORS FILE DATA
DO NOT REMOVE FROM OFFICE

NE 1/4, NW 1/4, SE 1/4 & SW 1/4 SEC. 17, T. 22 S., R.10 W., W.M.

FILED

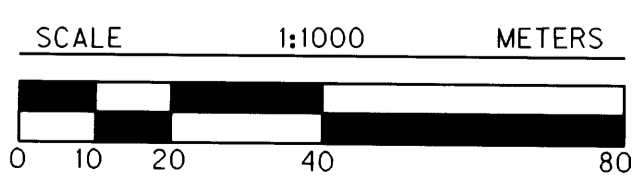
Date: 11/30/2000 By: JP
This survey consists of: 5 P&S.
Map: M136-14C
Narrative: _____
Corner Rpt: _____

DOUGLAS COUNTY
SURVEYOR



LEGEND

- () RECORD DATA PER 4B-21-23
- ▲ SET MONUMENT
- △ FOUND MONUMENT USED AS NETWORK POINT
- FOUND MONUMENT
- EDGE OF PAVEMENT
- EDGE OF GRAVEL
- EXTG. RIGHT-OF-WAY

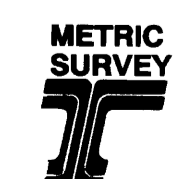


REGISTERED
PROFESSIONAL
LAND SURVEYOR

Christine V. Blevins

OREGON
JULY 19, 1994
CHRISTINE V. BLEVINS
2669

EXPIRES: DEC. 31, 2001



TO CONVERT A METRIC DISTANCE TO FEET, DIVIDE BY 0.3048

OREGON DEPARTMENT OF TRANSPORTATION
HORIZONTAL CONTROL,
RECOVERY AND RETRACEMENT MAP
CHARLOTTE CR. - LUDER CR. PASSING LANE SEC.
UMPOUA HWY. (HWY. 38)
DOUGLAS COUNTY

3500 STEWART PARKWAY, SUITE 140
ROSEBURG, OREGON 97470

NOVEMBER 17, 2000
PROJECT KEY *I0842

SHEET 3 OF 5

ST. HWY. 38-008C

MAP FILE M136-14C