

COUNTY SURVEYORS FILE DATA  
DO NOT REMOVE FROM OFFICE

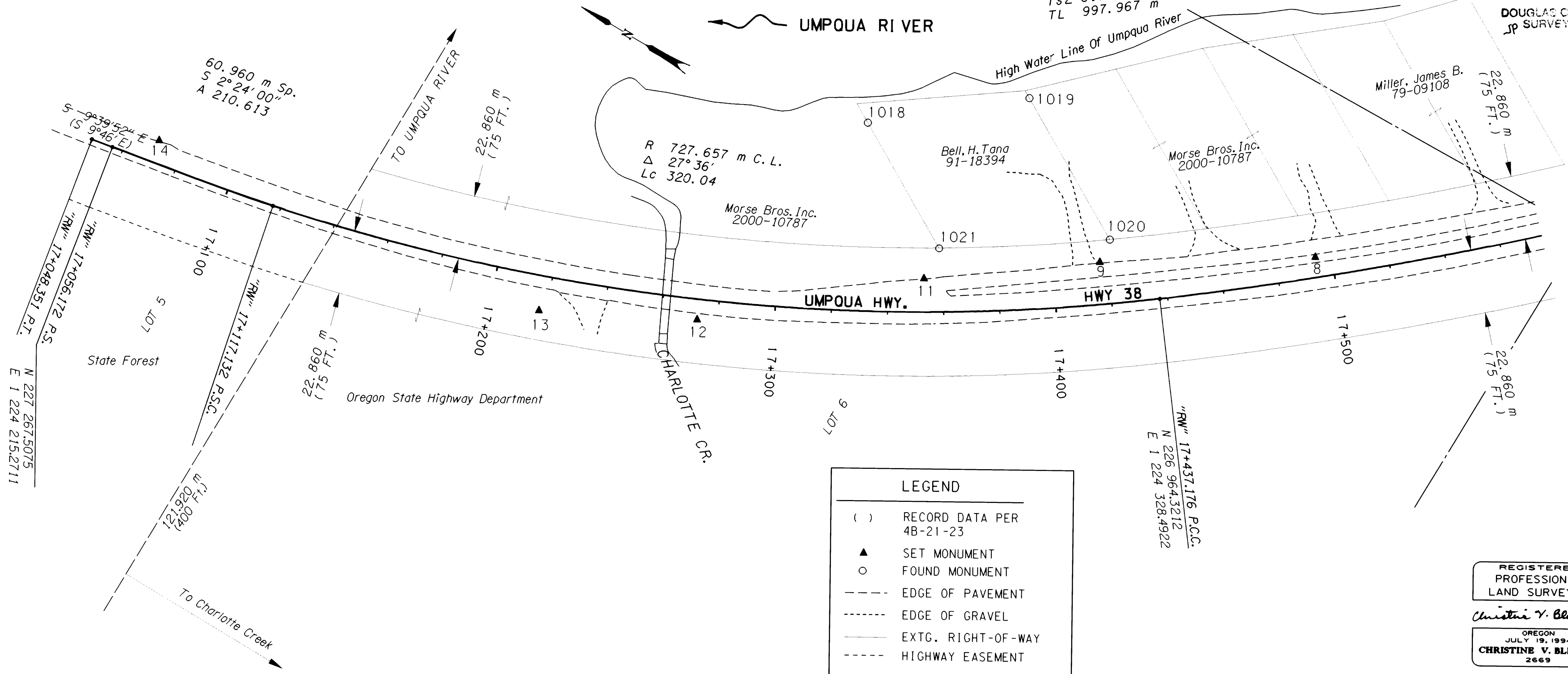
NE 1/4 & NW 1/4, SEC. 17, T. 22 S., R.10 W., W.M.

FILED

Date: 11/30/2000 By: JP  
This survey consists of: 5 pgs.  
Map: M136-14.B  
Narrative:  
Corner Rpt:

DOUGLAS COUNTY  
JP SURVEYOR

TΔ 50° 24' 00"  
Ts1 441.200 m  
Ts2 619.452 m  
TL 997.967 m

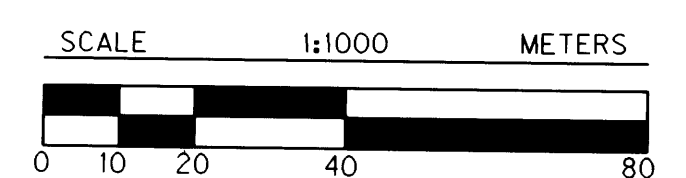


**LEGEND**

- ( ) RECORD DATA PER 4B-21-23
- ▲ SET MONUMENT
- FOUND MONUMENT
- EDGE OF PAVEMENT
- EDGE OF GRAVEL
- EXTG. RIGHT-OF-WAY
- - - - - HIGHWAY EASEMENT

REGISTERED  
PROFESSIONAL  
LAND SURVEYOR  
*Christine V. Blewins*  
OREGON  
JULY 19, 1994  
CHRISTINE V. BLEVINS  
2669  
EXPIRES: DEC. 31, 2001

POINT ID	LDP NORTHING	LDP EASTING	DESCRIPTION
8	226879.186	1224400.190	SET 16 mm X 762 mm IRON REBAR W/A 38 mm ALUMINUM CAP STAMPED "ODOT HORIZ. CONTROL 8".
9	226944.342	1224359.468	SET 16 mm X 762 mm IRON REBAR W/A 38 mm ALUMINUM CAP STAMPED "ODOT HORIZ. CONTROL 9".
11	226995.184	1224322.499	SET 16 mm X 762 mm IRON REBAR W/A 38 mm ALUMINUM CAP STAMPED "ODOT HORIZ. CONTROL 11".
12	227057.154	1224268.642	SET 16 mm X 762 mm IRON REBAR W/A 38 mm BRASS CAP STAMPED "ODOT CONTROL 12".
13	227107.207	1224242.745	SET 16 mm X 762 mm IRON REBAR W/A 38 mm BRASS CAP STAMPED "ODOT CONTROL 13", STABILIZED W/CONCRETE APPROX. 300 mm DEEP
14	227254.582	1224226.162	SET 16 mm X 762 mm IRON REBAR W/A 38 mm BRASS CAP STAMPED "ODOT CONTROL 14", STABILIZED W/CONCRETE APPROX. 300 mm DEEP
1018	227040.516	1224359.759	FOUND 5/8 " I. REBAR W/A 1 1/4 " YELLOW PLAST. CAP STAMPED "LS 1091" FLUSH W/SURFACE IN GOOD CONDITION. (DCSO MAP NO. M122-31)
1019	226995.466	1224396.618	FOUND 5/8 " I. REBAR W/A 1 1/4 " YELLOW PLAST. CAP STAMPED "LS 1091" 40 mm ABOVE SURFACE IN GOOD CONDITION. (DCSO MAP NO. M122-31)
1020	226945.167	1224367.913	FOUND 5/8 " I. REBAR W/A 1 1/4 " YELLOW PLAST. CAP STAMPED "LS 1091" FLUSH W/SURFACE IN GOOD CONDITION. (DCSO MAP NO. M122-31) - "RW" 17+421.365, 22.859 m LT.
1021	226995.847	1224334.180	FOUND 5/8 " I. REBAR W/A 1 1/4 " YELLOW PLAST. CAP STAMPED "LS 1091" FLUSH W/SURFACE IN GOOD CONDITION. (DCSO MAP NO. M122-31) - "RW" 17+358.496, 22.753 m LT.



TO CONVERT A METRIC DISTANCE TO FEET, DIVIDE BY 0.3048

OREGON DEPARTMENT OF TRANSPORTATION  
HORIZONTAL CONTROL,  
RECOVERY AND RETRACEMENT MAP  
CHARLOTTE CR. - LUDER CR. PASSING LANE SEC.  
UMPOUA HWY. (HWY. 38)  
DOUGLAS COUNTY  
3500 STEWART PARKWAY, SUITE 140  
ROSEBURG, OREGON 97470  
NOVEMBER 17, 2000  
PROJECT KEY #10842  
SHEET 2 OF 5

ST. HWY. 38-008B