

RIGHT OF WAY BOUNDARY MONUMENTATION MAP

LOCATED IN THE SW 1/4 OF THE NE 1/4
AND THE NW 1/4 OF THE SE 1/4 OF
SECTION 9, T22S, R8W, WILLAMETTE MERIDIAN
DOUGLAS COUNTY, OREGON

FILED
Date: 8/15/2000 By: J.P.
This survey consists of:
Map: M132-43
Narrative:
Corner Rpt:
DOUGLAS COUNTY
SURVEYOR

SURVEY NARRATIVE

THE PURPOSE OF THIS SURVEY WAS TO MONUMENT NEW RIGHT OF WAY PURCHASED FOR AN OREGON DEPARTMENT OF TRANSPORTATION HIGHWAY PROJECT CALLED "WEATHERLY CREEK BRIDGE AND PARADISE CREEK BRIDGE SECTIONS" AT PARADISE CREEK BRIDGE. THE NEW MONUMENTS WERE SET FROM PREVIOUSLY SET ODOT HORIZONTAL CONTROL POINTS, RECORDED IN THE FILED SURVEY M129-22 AT THE DOUGLAS COUNTY SURVEYOR'S OFFICE. COORDINATES ARE ASSUMED.

A LEICA TCA1800 TOTAL STATION (SERIAL #416526) WITH AN INTEGRATED EDM WAS USED TO SET THE MONUMENTS USING THE RADIAL STAKEOUT METHOD. THE TCA1800 HAS A STANDARD ANGULAR ERROR OF +/- 1 SECOND, AND A STANDARD DISTANCE ERROR OF +/- 2 MM, +/- 2 PPM.

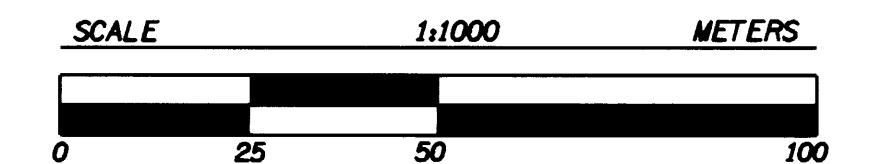
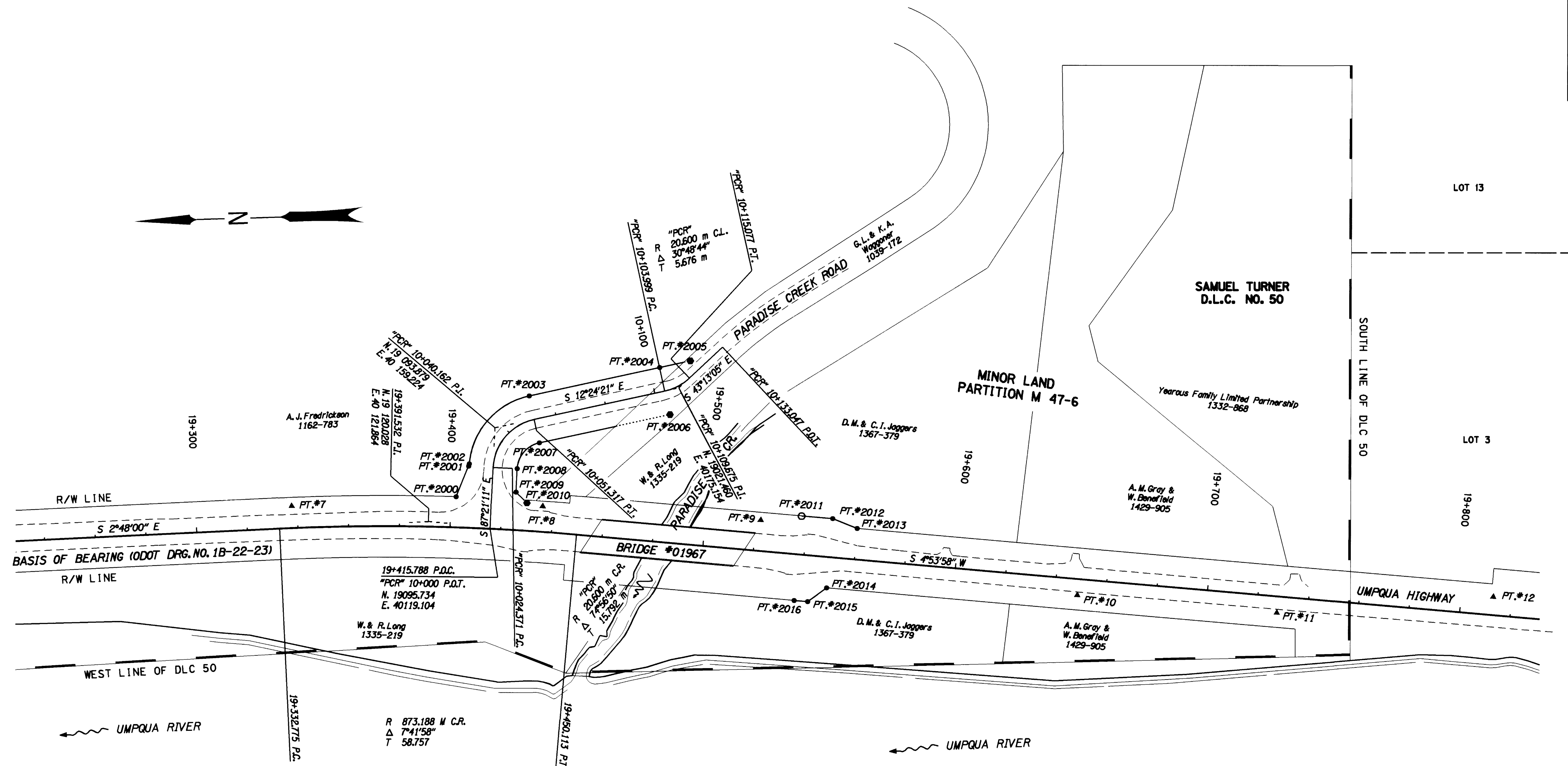
THIS SURVEY WAS COMPLETED NOVEMBER 9, 1999.

LEGEND

- SET 16 MM X 762 MM IRON ROD WITH 38 MM ALUMINUM CAP STAMPED "ODOT RIGHT- OF- WAY"
 - RESET 16 MM X 762 MM IRON ROD WITH 38 MM ALUMINUM CAP STAMPED "ODOT RIGHT- OF- WAY". (POINT #2011 RESET AT STATION AND OFFSET SHOWN IN THE TABLE, FOR ORIGINAL COORDINATE LOCATION, SEE COUNTY SURVEY M129-22 POINT #1006)
 - SET 16 MM X 762 MM IRON ROD WITH 38 MM ALUMINUM CAP STAMPED "OREG. STATE HWY. DIV. RP"
 - ▲ FOUND NETWORK MONUMENTS SEE COUNTY SURVEY M129-22
- EXTG. RIGHT OF WAY LINE
— NEW RIGHT OF WAY LINE

SET AND RESET MONUMENT LIST

POINT	STATION	OFFSET	NORTHING	EASTING
2000	"PCR" 10+012.082	14,000 m Lt.	19109.161	40131.820
2001	"PCR" 10+024.371	9,719 m Lt.	19104.317	40143.898
2002	"PCR" 10+025.000	9,500 m Lt.	19104.042	40144.805
2003	"PCR" 10+051.317	9,500 m Lt.	19080.497	40171.894
2004	"PCR" 10+103.999	9,500 m Lt.	19029.045	40183.213
2005	"PCR" 10+120.000	4,740 m Lt.	19016.982	40185.867
2006	"PCR" 10+103.999	9,500 m Rt.	19024.963	40164.656
2007	"PCR" 10+051.317	9,500 m Rt.	19076.415	40153.338
2008	"PCR" 10+024.371	9,500 m Rt.	19085.119	40143.010
2009	"PCR" 10+015.000	9,500 m Rt.	19085.551	40133.649
2010	"PCR" 10+011.000	14,000 m Rt.	19081.241	40129.446
2011	19+537.680	15,240 m Lt.	18972.937	40124.551
2012	19+550.000	15,240 m Lt.	18960.662	40123.499
2013	19+560.000	12,192 m Lt.	18950.959	40119.608
2014	19+550.000	12,192 m Rt.	18963.005	40096.167
2015	19+543.000	18,288 m Rt.	18970.500	40090.691
2016	19+537.680	18,288 m Rt.	18975.800	40091.146



REGISTERED
PROFESSIONAL
LAND SURVEYOR

OREGON
JANUARY 18, 1993
JOSEPH R. THOMAS
2588

EXPIRES: JUNE 30, 2002

OREGON DEPARTMENT OF TRANSPORTATION
RIGHT OF WAY BOUNDARY
MONUMENTATION MAP

PARADISE CREEK BRIDGE
DOUGLAS COUNTY UMPQUA HIGHWAY

ADDRESS - 3500 STEWART PARKWAY, SUITE 140
ROSEBURG, OREGON 97470