



RIGHT OF WAY MONUMENTATION MAP

For HANCOCK HILL SLIDE CORRECTION SECTION

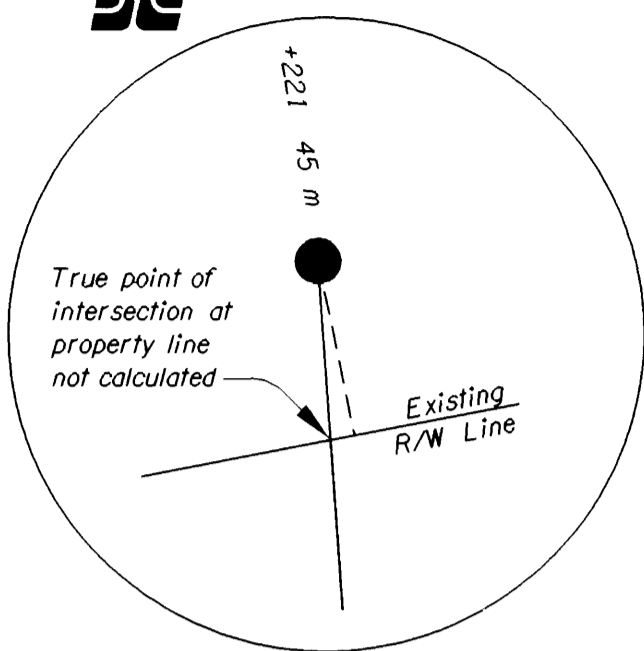
By The Oregon Department of Transportation

Located In The SW 1/4 Of Sec. 21, T. 22 S., R. 7 W., W.M.

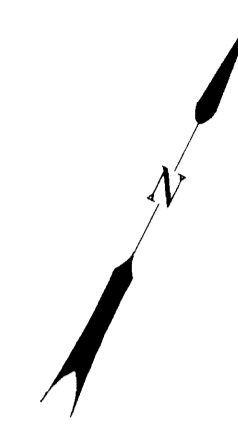
FILED

Date: 7-30-97 By: J.P.
This survey consists of:
Map: M 127-29
Narrative: _____
Corner Rpt: _____

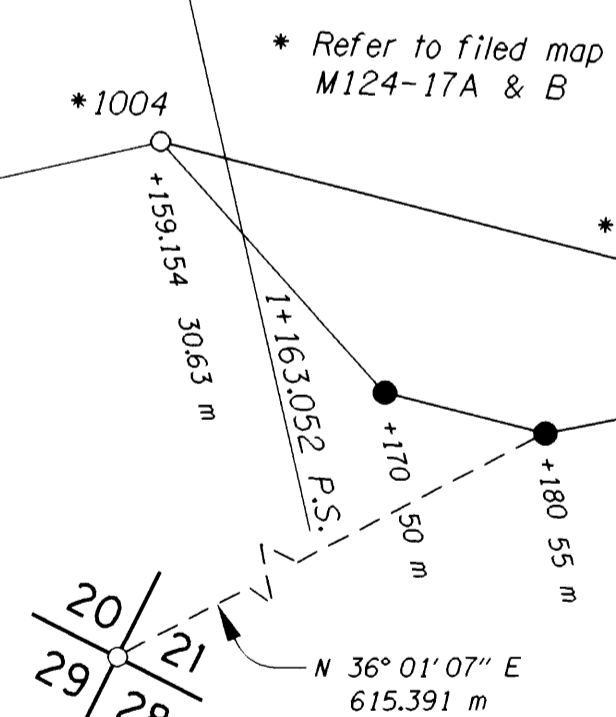
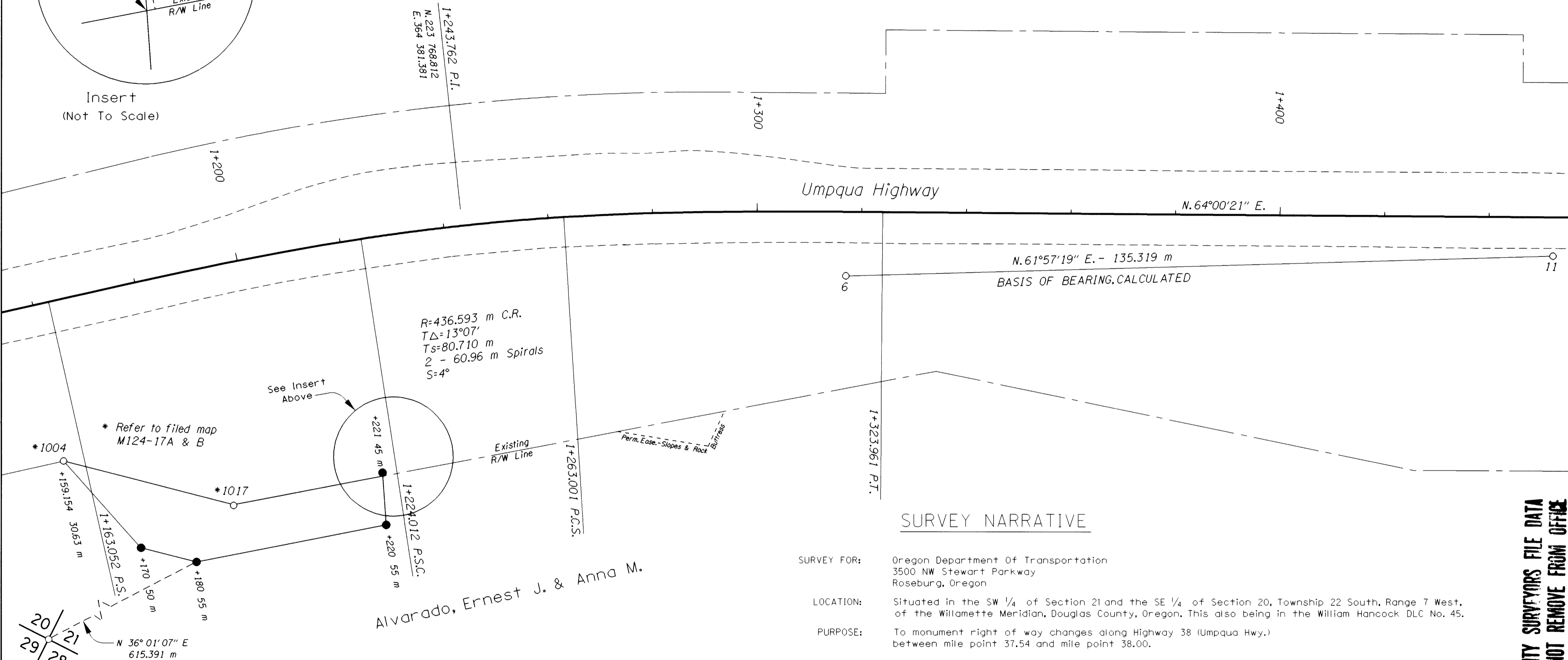
DOUGLAS COUNTY
REGISTERED SURVEYOR CB



Insert
(Not To Scale)



SCALE: 1:500



FD. SECTION CORNER
65 mm (2 1/2") IRON PIPE
(7-10-95)
N. 223 187.959
E. 364 004.510

FOUND & SET MONUMENTS

| | | |
|---|---|--|
| STA. 1+170.000, 50.000 m RIGHT SET 0.914 m X 15.9 mm IRON ROD W/38 mm ALUM. CAP STAMPED "OREGON STATE HWY. DIV." N. 223 683.450 E. 364 355.655 | STA. 1+180.000, 55.000 m RIGHT SET 0.914 m X 15.9 mm IRON ROD W/38 mm ALUM. CAP STAMPED "OREGON STATE HWY. DIV." N. 223 685.703 E. 364 366.390 | FD. 13 mm SQUARE IRON ROD W/38 mm ALUM. CAP STAMPED "ODOT HORIZ. CONTROL 6" N. 223 790.107 E. 364 453.055 |
| STA. 1+220.000, 55.000 m RIGHT SET 0.914 m X 15.9 mm IRON ROD W/38 mm ALUM. CAP STAMPED "OREGON STATE HWY. DIV." N. 223 708.200 E. 364 395.690 | STA. 1+221.000, 45.000 m RIGHT SET 0.914 m X 15.9 mm IRON ROD W/38 mm ALUM. CAP STAMPED "OREGON STATE HWY. DIV." N. 223 716.860 E. 364 390.600 | FD. 13 mm SQUARE IRON ROD W/38 mm ALUM. CAP STAMPED "ODOT HORIZ. CONTROL 11" N. 223 853.729 E. 364 572.485 |

LEGEND

- FOUND POINTS
- SET POINTS

SURVEY NARRATIVE

SURVEY FOR: Oregon Department Of Transportation
3500 NW Stewart Parkway
Roseburg, Oregon

LOCATION: Situated in the SW 1/4 of Section 21 and the SE 1/4 of Section 20, Township 22 South, Range 7 West, of the Willamette Meridian, Douglas County, Oregon. This also being in the William Hancock DLC No. 45.

PURPOSE: To monument right of way changes along Highway 38 (Umpqua Hwy.) between mile point 37.54 and mile point 38.00.

EQUIPMENT: A Wild T-1610 Electronic Theodolite and DI-1600 Distomat distance meter were used to make the network observations. A level circuit was run with the NA-2002 Bar Code Level. The T-1610 has a standard angular error of +/- 1.5 seconds. The DI-1600 has a standard distance error of +/- 3 mm +/- 2ppm, and the NA-2002 has a standard deviation of 0.9 mm in a 1 km double-run level circuit.

PROCEDURE: Right of way monuments were set after the completion of the construction project "Hancock Hill Slide Correction" using network control points set during the location process (for network control accuracy see map #M 124-17 A&B filed at the Douglas County Surveyor's Office). Point #6 was occupied and Point #11 was backsighted. Right of way was set using station and offset from the right of way centerline. This survey was done between Jan. 7 and Jan. 24, 1997.

BASIS OF BEARING: This survey uses network points #6 and #11 (from network control map #M 124-17 A&B) described in "Found and Set Monuments" table contained herein.

COORDINATES: NOTE: ALL COORDINATES ON THIS MAP ARE METRIC, AND ARE ASSUMED COORDINATES. (For additional reference see ODOT Right of Way Drawing No. 10B-8-34)

COUNTY SURVEYORS FILE DATA
DO NOT REMOVE FROM OFFICE

REGISTERED
PROFESSIONAL
LAND SURVEYOR

Michael J. Gardner

OREGON
JANUARY 21, 1988
MICHAEL J. GARDNER
2318

RENEWAL DATE 06-30-99
MICHAEL J. GARDNER P.L.S.
Oregon Department of Transportation
3500 N.W. Stewart Parkway
Roseburg, Oregon 97470

ST. HWY. 38-003

~~ST. HWY. 101-003~~

MAP FILE M 127-29